

## B Series

Piconics B series is a side tuned inductor with leads suitable for printed circuit board mounting. By utilizing various core materials this series provides a wide range of over lapping inductance values and is convertible to a custom transformer configuration by the addition of taps and leads, as required.

### FEATURES:

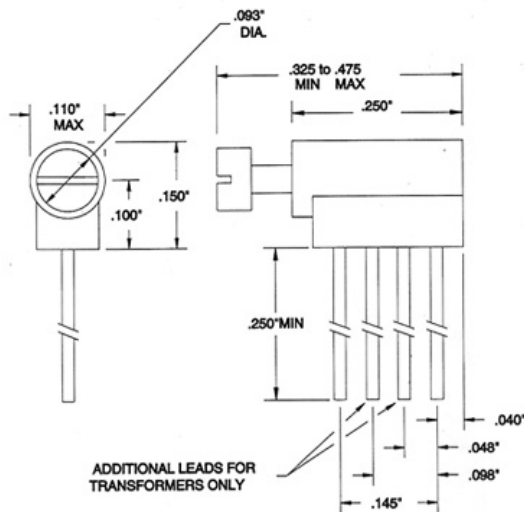
- Slide Tuning
- Self-Locking Adjustment Screw
- Molded Diallyl Phthalate Case
- High Reliability
- Style, Military LT11:
  - Grade 2
  - Class A

### ABSOLUTE MAXIMUM RATINGS:

- Operating temperature: -55° C to +125 ° C
- Storage temperature: -55° C to +125° C
- Power Dissipation: 225 mW max
- Dielectric withstanding voltages:
  - Sea level: 1,000 V rms min.
  - 70,000 feet: 300 V rms min.

### PHYSICAL CHARACTERISTICS:

- Terminal pull:
  - B250-8I through B104-3F 2lb. min.
  - B124-3f through B105-1F 1 lb. min.
- Tuning torque: .005-.15 in. oz.
- Stop torque: .2 in. oz. max
- Weight: .2 gram max.



Part number	L max uH	L min uH	QMin at Lmax	Test Freq Mhz	SRF Min MHz	DCR Max Ohms	Idc Max mA
B250-8I-10	.025	.02	50	200	1000	.04	250
B510-8I-10	.051	.036	40	100	700	.05	250
B760-8I-10	.076	.054	40	100	615	.15	250
B101-8I-10	.10	.07	30	25	500	.5	250
B151-8I-10	.15	.11	30	25	420	.5	200
B221-8I-10	.22	.16	30	25	400	.6	180
B271-8I-10	.27	.19	30	25	400	.8	180
B331-8I-10	.33	.24	30	25	320	.9	140
B471-8I-10	.47	.34	30	25	290	1	100
B561-8I-10	.56	.40	30	25	250	1.1	100
B681-8I-10	.68	.50	30	25	240	1.3	100
B821-8I-10	.82	.59	30	25	180	1.4	100
B102-6I-00	1.0	.67	25	7.9	140	1.5	125
B152-6I-00	1.5	1.0	25	7.9	135	1.6	100
B222-6I-00	2.2	1.5	25	7.9	100	2.1	80
B272-6I-00	2.7	2.0	25	7.9	60	2.4	75
B332-6I-00	3.3	2.2	25	7.9	60	2.7	65
B472-6I-00	4.7	3.1	25	7.9	50	3.3	60
B582-6I-00	5.8	3.9	25	7.9	38	4.2	58
B682-6I-00	6.8	4.5	25	7.9	36	4.5	55
B822-6I-00	8.2	5.5	25	7.9	25	4.5	50
B103-3F-00	10	6.0	25	2.5	40	4.5	57
B133-3F-00	13	6.5	25	2.5	35	4.5	53
B163-3F-00	16	8.0	25	2.5	26	5.1	50
B203-3F-00	20	10	25	2.5	20	5.3	43
B223-3F-00	22	11	25	2.5	14	6	43
B303-3F-00	30	15	25	2.5	10	6.8	40
B363-3F-00	36	18	25	2.5	9	7.5	40
B473-3F-00	47	24	25	2.5	7	8.6	39
B563-3F-00	56	28	25	2.5	6	11	35
B683-3F-00	68	34	25	2.5	6	12	30
B753-3F-00	75	38	25	2.5	6	13	30
B863-3F-00	86	43	25	2.5	6	15	28
B104-3F-00	100	50	20	.79	5	18	27
B124-3F-01	120	60	20	.79	4	21	25
B474-3F-01	470	240	20	.79	2	45	16
B684-1F-01	680	340	20	.79	2	53	15
B105-1F-01	1000	500	20	.25	1	113	11