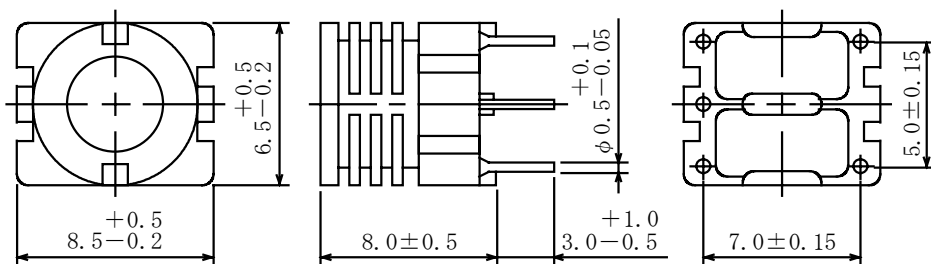
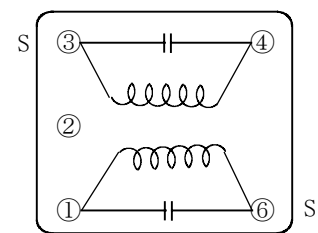


Type: S-8N
◆ Product Description

- 9.0×7.0mm Max.(L×W), 8.5mm Max. Height.
- Operating frequency: 300MHz Max.
- In addition to the reference versions of parameters shown here, custom designs are available to meet your exact requirements.

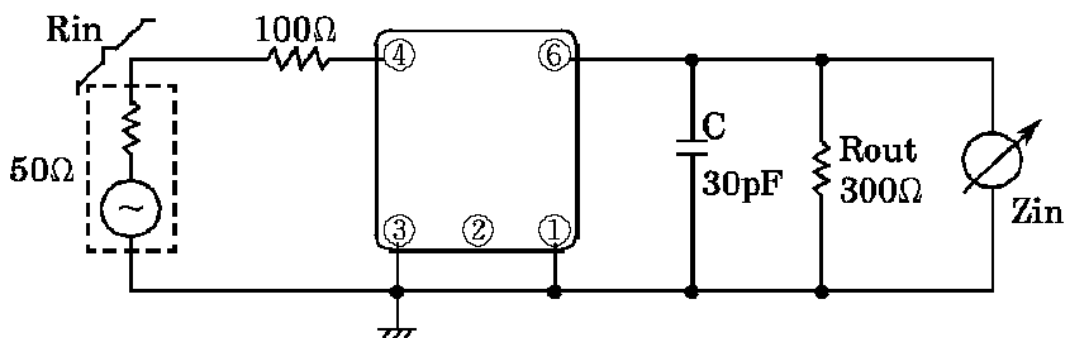
◆ Feature

- Variable unshielded pin type.
- Two capacitors can be internally mounted in one section.
- RoHS Compliance

◆ Dimensions (mm)

◆ Connection (Bottom View)


“S” is winding start.

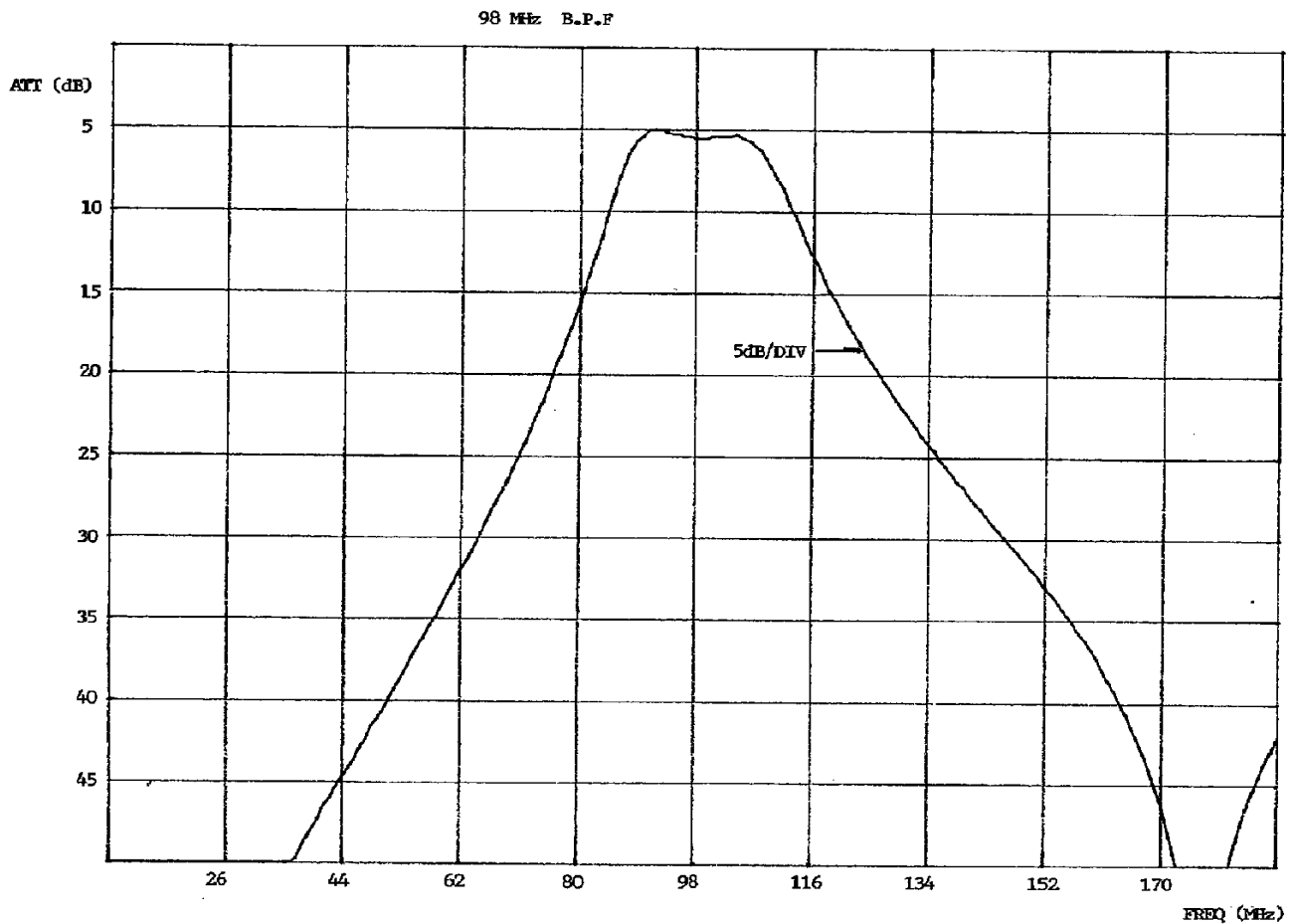
- * Dimension does not include solder used on coil.
- * Pin pitch should be measured at the root of terminal.

◆ Testing Circuit


Type: S-8N
◆ Specification (Part No: S2111745)

1. Frequency Center	98.0 MHz
2. Input Impedance (3-4)	150 Ω
3. Output Impedance (1-6)	300 Ω // 30pF
4. Ripple (87.5-108 MHz)	2.0dB Max.
5. Att. Of Stop Band (10-60 MHz)	12dB Min.
6. Att. Of Stop Band (140-200 MHz)	12dB Min.
7. Int. Capacity (3-4)	75pF±10%
8. Int. Capacity (1-6)	33pF±10%

* Basic lever: at F: 98MHz.

Frequency Response


Please refer to the sales offices on our website for a representative near you