

Super FAP-G Series

N-CHANNEL SILICON POWER MOSFET

Features

- High speed switching
- No secondary breakdown
- Avalanche-proof
- Low on-resistance
- Low driving power

Applications

- Switching regulators
- UPS (Uninterruptible Power Supply)
- DC-DC converters

Maximum ratings and characteristic Absolute maximum ratings

(Tc=25°C unless otherwise specified)

Item	Symbol	Ratings	Unit	Remarks
Drain-source voltage	V _{DS}	500	V	
	V _{DSX}	500	V	V _{GS} =-30V
Continuous drain current	I _D	3.6	A	
Pulsed drain current	I _{D(puls)}	±14.4	A	
Gate-source voltage	V _{GS}	±30	V	
Repetitive or non-repetitive	I _{AR}	3.6	A	Note *1
Non-repetitive				
Maximum avalanche energy	E _{AS}	227.9	mJ	Note *2
Repetitive				
Maximum avalanche energy	E _{AR}	2.1	mJ	Note *3
Maximum drain-source dV/dt	dV _{DS} /dt	20	kV/μs	V _{DS} ≤ 500V
Peak diode recovery dV/dt	dV/dt	5	kV/μs	Note *4
Max. power dissipation	P _D	21	W	T _c =25°C
		2.16	W	T _a =25°C
Operating and storage	T _{ch}	+150	°C	
temperature range	T _{stg}	-55 to +150	°C	
Isolation voltage	V _{ISO}	2	kVrms	t=60sec, f=60Hz

Note *1 T_{ch} ≤ 150°C

Note *2 Starting T_{ch}=25°C, I_{AS}=1.5A, L=186mH, V_{CC}=50V, R_G=50Ω

E_{AS} limited by maximum channel temperature and avalanche current.
See to 'Avalanche Energy' graph.

Note *3 Repetitive rating : Pulse width limited by maximum channel temperature.
See to 'Transient Thermal impedance' graph.

Note *4 I_F ≤ -I_D, -di/dt=50A/μs, V_{CC} ≤ BV_{DSS}, T_{ch} ≤ 150°C

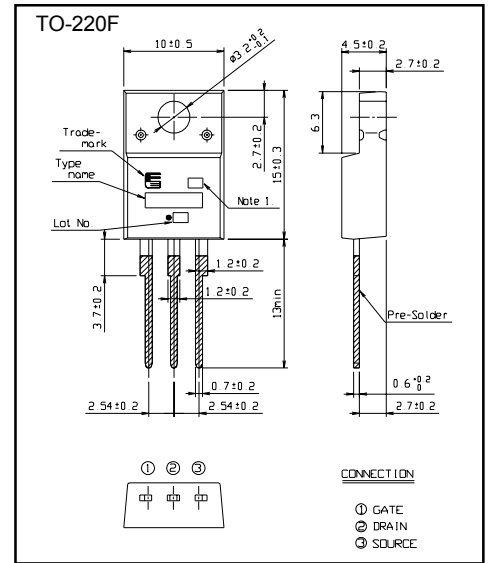
Electrical characteristics (Tc =25°C unless otherwise specified)

Item	Symbol	Test Conditions			
Drain-source breakdown voltage	BV _{DSS}	I _D =250μA V _{GS} =0V	500		V
Gate threshold voltage	V _{GS(th)}	I _D =250μA V _{DS} =V _{GS}	3.0		V
Zero gate voltage drain current	I _{DSS}	V _{DS} =500V V _{GS} =0V		25	μA
		V _{DS} =400V V _{GS} =0V		250	
Gate-source leakage current	I _{GSS}	V _{GS} =±30V V _{DS} =0V		100	nA
Drain-source on-state resistance	R _{DS(on)}	I _D =1.8A V _{GS} =10V	1.84	2.30	Ω
Forward transconductance	g _{fs}	I _D =1.8A V _{DS} =25V	1.7	3.4	S
Input capacitance	C _{iss}	V _{DS} =25V	330	500	pF
Output capacitance	C _{oss}	V _{GS} =0V	50	75	
Reverse transfer capacitance	C _{rss}	f=1MHz	2.5	5.0	
Turn-on time t _{on}	t _{d(on)}	V _{CC} =300V I _D =1.8A	11	18	ns
		V _{GS} =10V	5.0	7.5	
Turn-off time t _{off}	t _{d(off)}	R _{GS} =10 Ω	23	35	
			6.0	9.0	
Total Gate Charge	Q _G	V _{CC} =250V	13	20	nC
Gate-Source Charge	Q _{GS}	I _D =3.6A	5.5	8.5	
Gate-Drain Charge	Q _{GD}	V _{GS} =10V	2.5	3.8	
Diode forward on-voltage	V _{SD}	I _F =3.6A V _{GS} =0V T _{ch} =25°C	1.00	1.50	V
Reverse recovery time	t _{rr}	I _F =3.6A V _{GS} =0V	0.5		μs
Reverse recovery charge	Q _{rr}	-di/dt=100A/μs T _{ch} =25°C	2.3		μC

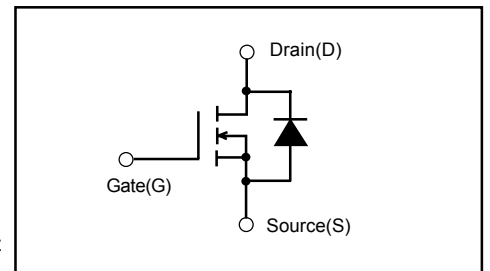
Thermal characteristics

Item	Symbol	Test Conditions	Min.	Typ.	Max.	Units
Thermal resistance	R _{th(ch-c)}	channel to case			5.952	°C/W
	R _{th(ch-a)}	channel to ambient			58.0	°C/W

Outline Drawings [mm]



Equivalent circuit schematic



Characteristics

