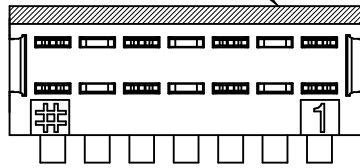
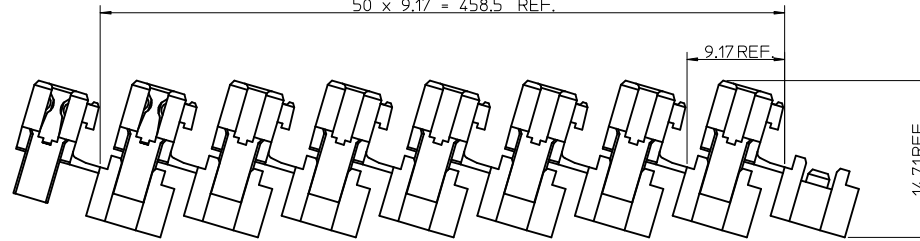


POSITION OF
COLOUR STRIPE

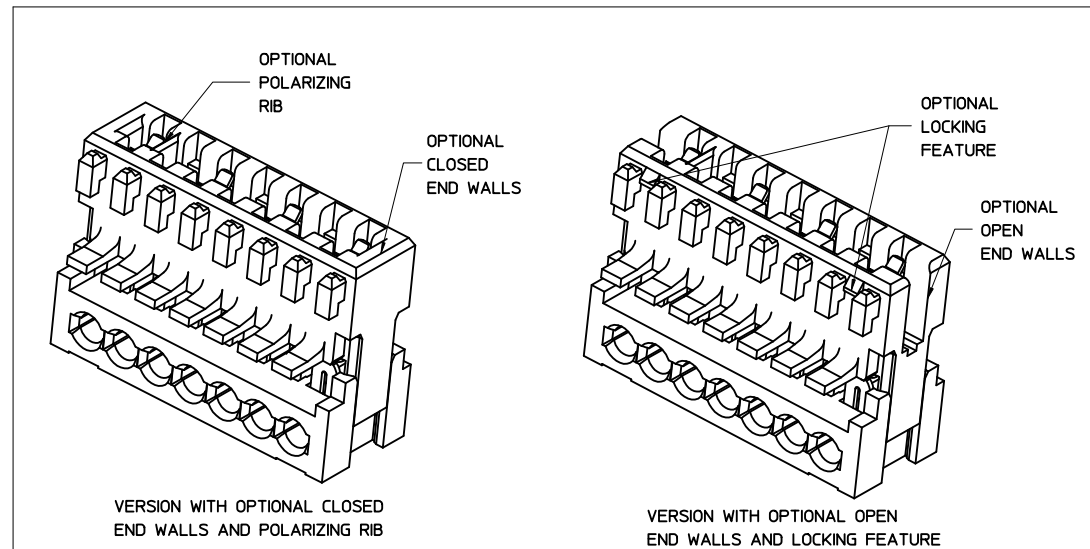
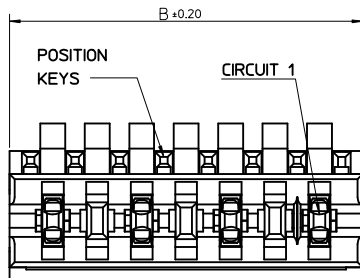
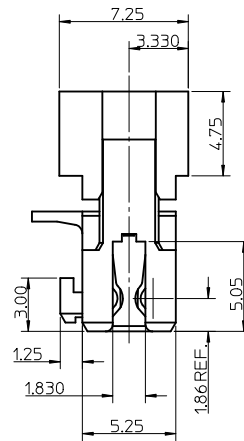
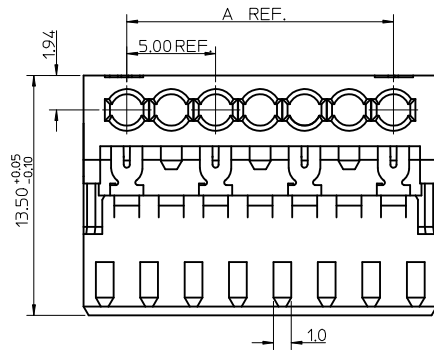


50 x 9.17 = 458.5 REF.



CCT	'A'	'B'
2	5.0	9.875
3	10.0	14.875
4	15.0	19.875
5	20.0	24.875
6	25.0	29.875
7	30.0	34.875
8	35.0	39.875
9	40.0	44.875
10	45.0	49.875

SHIPPING ARRANGEMENT
SCALE 3:1



SEE SUBSEQUENT SHEETS FOR RELEVANT PART NUMBERS.

NOTES:

- REFER TO PRODUCT SPECIFICATION: PS-99020-0040.
- MATERIAL: HOUSING - POLYESTER (PBT) 10% GLASS FILLED, UL94-V0, COLOUR: NATURAL (BEIGE).
TERMINAL: PHOSPHOR BRONZE 0.30 REF. THICK - PLATING HOT TIN DIP.
- REFER TO APPLICATION SPEC (AS-99033-0008)
- REFER TO PACKAGING SPEC (PK-90871-001)

<p>ADDED NEW P/N'S</p> <p>EC NO: E2010-0367</p> <p>2010/04/28</p> <p>DRWN:BMAGUIRE</p> <p>1999/05/04</p> <p>CHKD:PWHLTE</p> <p>1999/05/04</p> <p>APPR:BMAGUIRE</p> <p>2010/05/28</p>	<p>QUALITY SYMBOLS</p> <p>▽=0</p> <p>▽=0</p>	<p>GENERAL TOLERANCES (UNLESS SPECIFIED)</p> <table border="1"> <thead> <tr> <th></th> <th>mm</th> <th>INCH</th> </tr> </thead> <tbody> <tr> <td>4 PLACES</td> <td>± ---</td> <td>± ---</td> </tr> <tr> <td>3 PLACES</td> <td>± 0.05</td> <td>± ---</td> </tr> <tr> <td>2 PLACES</td> <td>± 0.10</td> <td>± ---</td> </tr> <tr> <td>1 PLACE</td> <td>± 0.2</td> <td>± ---</td> </tr> </tbody> </table> <p>ANGULAR ±1/2°</p>		mm	INCH	4 PLACES	± ---	± ---	3 PLACES	± 0.05	± ---	2 PLACES	± 0.10	± ---	1 PLACE	± 0.2	± ---	<p>DIMENSION STYLE</p> <p>MM ONLY</p> <p>DRAWN BY: LK IERNAN</p> <p>DATE: 1999/04/20</p> <p>CHECKED BY: PWHLTE</p> <p>DATE: 1999/05/04</p> <p>APPROVED BY: MWLHLTE</p> <p>DATE: 1999/05/04</p> <p>MATERIAL NO.</p>	<p>SCALE</p> <p>5:1</p> <p>DESIGN UNITS</p> <p>METRIC</p> <p>THIRD ANGLE PROJECTION</p>	<p>TITLE</p> <p>APPLI-MATE 2.5 FEMALE 5MM TERMINAL PITCH</p>
		mm	INCH																	
	4 PLACES	± ---	± ---																	
	3 PLACES	± 0.05	± ---																	
2 PLACES	± 0.10	± ---																		
1 PLACE	± 0.2	± ---																		
			<p>SEE SHEET 2&3</p>	<p>MOLEX INCORPORATED</p>	<p>SD-90872-001</p>															
		<p>DRAFT WHERE APPLICABLE MUST REMAIN WITHIN DIMENSIONS</p>	<p>SIZE</p> <p>A2</p>	<p>DOCUMENT NO.</p>	<p>SHEET NO.</p> <p>1 OF 3</p>															
			<p>THIS DRAWING CONTAINS INFORMATION THAT IS PROPRIETARY TO MOLEX INCORPORATED AND SHOULD NOT BE USED WITHOUT WRITTEN PERMISSION</p>																	

2 CIRCUIT

MOLEX PART NO.	REMOVED POSITION KEYS	CONFIGURATION (SEE NOTE 1)	REF.	END WALLS	POLARIZING RIB	LOCKING DEVICE	CONTACT PITCH	CABLE TYPE (SEE NOTE 2)	COLOUR STRIPE
90872-0002	NONE		K00	OPEN	NO	NO	5.0	A	NATURAL
90872-0003	a		K30	OPEN	NO	NO	5.0	A	NATURAL
90872-0004	b		K31	OPEN	NO	NO	5.0	A	NATURAL
90872-0005	c		K32	OPEN	NO	NO	5.0	A	NATURAL
90872-0006	d		K33	OPEN	NO	NO	5.0	A	NATURAL
90872-0007	b d		K34	OPEN	NO	NO	5.0	A	NATURAL
90872-0008	a c		K35	OPEN	NO	NO	5.0	A	NATURAL
90872-0009	a d		K36	OPEN	NO	NO	5.0	A	NATURAL
90872-0010	a b		K37	OPEN	NO	NO	5.0	A	NATURAL
90872-0011	b c		K38	OPEN	NO	NO	5.0	A	NATURAL
90872-0012	c d		K39	OPEN	NO	NO	5.0	A	NATURAL
90872-0501	NONE		-	CLOSED	BETWEEN HSG CKT 1 & CKT 2	NO	5.0	A	NATURAL
90872-0014	b c d		K40	OPEN	NO	NO	5.0	A	NATURAL
90872-0351	d		K00	OPEN	NO	NO	5.0	B	GREEN
90872-0013	b c		K38	OPEN	NO	NO	5.0	A	RED
90872-0015	b c d		K40	OPEN	NO	NO	5.0	A	BLUE
90872-0016	c d		K39	OPEN	NO	NO	5.0	A	BLUE
90872-0017	NONE		-	OPEN	BETWEEN HSG CKT 2 & CKT 3	NO	5.0	A	NATURAL
90872-0018	NONE		-	OPEN	BETWEEN HSG CKT 1 & CKT 2	NO	5.0	A	NATURAL
90872-0354	d		K30	OPEN	NO	NO	5.0	B	NATURAL
90872-0019	a		K30	OPEN	NO	NO	5.0	A	RED
90872-0020	d		K33	OPEN	NO	NO	5.0	A	BLUE
90872-0352	a b		K37	OPEN	NO	NO	5.0	B	NATURAL
90872-0021	NONE		K00	OPEN	NO	NO	5.0	A	RED
90872-0022	c d		K39	OPEN	NO	NO	5.0	A	RED
90872-0023	c		-	1ST OPEN LAST CLOSED	NO	NO	5.0	A	NATURAL

2 CIRCUIT

MOLEX PART NO.	REMOVED POSITION KEYS	CONFIGURATION (SEE NOTE 1)	REF.	END WALLS	POLARIZING RIB	LOCKING DEVICE	CONTACT PITCH	CABLE TYPE (SEE NOTE 2)	COLOUR STRIPE
90872-0024	a b d		-	OPEN	NO	NO	5.0	A	NATURAL
90872-0025	b d		-	OPEN	NO	NO	5.0	A	GREEN

3 CIRCUIT

MOLEX PART NO.	REMOVED POSITION KEYS	CONFIGURATION (SEE NOTE 1)	REF.	END WALLS	POLARIZING RIB	LOCKING DEVICE	CONTACT PITCH	CABLE TYPE (SEE NOTE 2)	COLOUR STRIPE
90872-1001	NONE		K00	OPEN	NO	NO	5.0	A	NATURAL
90872-1002	b		K35	OPEN	NO	NO	5.0	A	NATURAL
90872-1003	c		K36	OPEN	NO	NO	5.0	A	NATURAL
90872-1004	c d e		K40	OPEN	NO	NO	5.0	A	NATURAL
90872-1005	NONE		-	OPEN	BETWEEN HSG CKT 4 & CKT 5	NO	5.0	A	NATURAL
90872-1007	NONE		-	OPEN	BETWEEN HSG CKT 1 & CKT 2	NO	5.0	A	NATURAL
90872-1008	b c e		K00	OPEN	NO	NO	5.0	A	NATURAL
90872-1009	d e		K58	OPEN	NO	NO	5.0	A	NATURAL
90872-1501	NONE		-	CLOSED	BETWEEN HSG CKT 4 & CKT 5	NO	5.0	A	NATURAL
90872-1010	a d e f		-	OPEN	NONE	NONE	5.0	A	NATURAL
90872-1011	e f		-	OPEN	NONE	NONE	5.0	A	NATURAL

NOTES

- + DENOTES TERMINAL VOIDED POSITION
 ⊕ DENOTES TERMINAL LOADED POSITION
 | DENOTES POLARIZING POSITION
- A- APPLICABLE CABLE: 0.22 - 0.38 sq.mm (12 CONDUCTORS)
 B- APPLICABLE CABLE: 0.22 sq.mm (7 CONDUCTORS)
 0.34 sq.mm (7 CONDUCTORS)

SEE SHEET 1 IEC NO: E2010-0367 DRAWN BY: B.MAGUIRE CHKD BY: P.WHYTE APPR: B.MAGUIRE 2010/04/28 1999/05/04 2010/05/28	QUALITY SYMBOLS ▽=0 ▽=0	GENERAL TOLERANCES (UNLESS SPECIFIED) mm INCH 4 PLACES ± --- ± --- 3 PLACES ± 0.05 ± --- 2 PLACES ± 0.10 ± --- 1 PLACE ± 0.2 ± --- ANGULAR ± 1/2°	DIMENSION STYLE MM ONLY	SCALE 1:1	DESIGN UNITS METRIC	THIRD ANGLE PROJECTION
	DRAWN BY: LK IERNAN DATE: 1999/04/20 CHECKED BY: P.WHYTE DATE: 1999/05/04 APPROVED BY: P.WHYTE DATE: 1999/05/04	TITLE APPLI-MATE 2.5 FEMALE 5MM TERMINAL PITCH	MATERIAL NO. SEE CHARTS	DOCUMENT NO. SD-90872-001	SHEET NO. 2 OF 3	
	DRAFT WHERE APPLICABLE MUST REMAIN WITHIN DIMENSIONS					
	THIS DRAWING CONTAINS INFORMATION THAT IS PROPRIETARY TO MOLEX INCORPORATED AND SHOULD NOT BE USED WITHOUT WRITTEN PERMISSION					

4 CIRCUIT

MOLEX PART NO.	REMOVED POSITION KEYS	CONFIGURATION (SEE NOTE 1)	REF.	END WALLS	POLARIZING RIB	LOCKING DEVICE	CONTACT PITCH	CABLE TYPE (SEE NOTE 2)	COLOUR STRIPE
90872-2001	NONE		K00	OPEN	NO	NO	5.0	A	NATURAL
90872-2002	a		K30	OPEN	NO	NO	5.0	A	NATURAL
90872-2003	b		K31	OPEN	NO	NO	5.0	A	NATURAL
90872-2004	d f		K37	OPEN	NO	NO	5.0	A	NATURAL
90872-2005	a e g		K43	OPEN	NO	NO	5.0	A	RED
90872-2006	c e		K49	OPEN	NO	NO	5.0	A	NATURAL
90872-2007	b c d f		-	OPEN	NO	NO	5.0	A	NATURAL
90872-2008	d e f g		-	OPEN	NO	NO	5.0	A	NATURAL
90872-2009	a b e f h		-	OPEN	NO	NO	5.0	A	NATURAL
90872-2010	a c e g		-	OPEN	NONE	NONE	5.0	A	NATURAL
90872-2011	a b d f g h		-	OPEN	NONE	NONE	5.0	A	NATURAL

5 CIRCUIT

MOLEX PART NO.	REMOVED POSITION KEYS	CONFIGURATION (SEE NOTE 1)	REF.	END WALLS	POLARIZING RIB	LOCKING DEVICE	CONTACT PITCH	CABLE TYPE (SEE NOTE 2)	COLOUR STRIPE
90872-3001	NONE		K00	OPEN	NO	NO	5.0	A	NATURAL
90872-3002	a c		K69	OPEN	NONE	NONE	5.0	A	NATURAL

6 CIRCUIT

MOLEX PART NO.	REMOVED POSITION KEYS	CONFIGURATION (SEE NOTE 1)	REF.	END WALLS	POLARIZING RIB	LOCKING DEVICE	CONTACT PITCH	CABLE TYPE (SEE NOTE 2)	COLOUR STRIPE
90872-4001	NONE		K00	OPEN	NO	NO	5.0	A	NATURAL

NOTES

- + DENOTES TERMINAL VOIDED POSITION
 - ⊕ DENOTES TERMINAL LOADED POSITION
 - ! DENOTES POLARIZING RIB POSITION
- A - APPLICABLE CABLE: 0.22 - 0.38 sqmm (12 CONDUCTORS)
 - B - APPLICABLE CABLE: 0.22 sqmm (7 CONDUCTORS)
 - 0.34 sqmm (7 CONDUCTORS)

7 CIRCUIT

MOLEX PART NO.	REMOVED POSITION KEYS	CONFIGURATION (SEE NOTE 1)	REF.	END WALLS	POLARIZING RIB	LOCKING DEVICE	CONTACT PITCH	CABLE TYPE (SEE NOTE 2)	COLOUR STRIPE
90872-5001	a c e g i k m		K03	OPEN	NO	NO	5.0	A	NATURAL
90872-5002	c d g h i j k		-	OPEN	NO	NO	5.0	A	NATURAL

8 CIRCUIT

MOLEX PART NO.	REMOVED POSITION KEYS	CONFIGURATION (SEE NOTE 1)	REF.	END WALLS	POLARIZING RIB	LOCKING DEVICE	CONTACT PITCH	CABLE TYPE (SEE NOTE 2)	COLOUR STRIPE
90872-6001	NONE		K00	OPEN	NO	NO	5.0	A	NATURAL

SEE SHEET 1 IEC NO: E2010-0367 DRAWN BY: B.MAGUIRE CHECKED BY: P.WHYTE APPR: B.MAGUIRE DATE: 2010/04/28 DATE: 1999/05/04 DATE: 2010/05/28	QUALITY SYMBOLS ▽=0 ▽=0	GENERAL TOLERANCES (UNLESS SPECIFIED) mm INCH 4 PLACES ± --- ± --- 3 PLACES ± 0.05 ± --- 2 PLACES ± 0.10 ± --- 1 PLACE ± 0.2 ± --- ANGULAR ± 1/2°	DIMENSION STYLE MM ONLY	SCALE 1:1	DESIGN UNITS METRIC	THIRD ANGLE PROJECTION	
	DRAWN BY: LK IERNAN DATE: 1999/04/20 CHECKED BY: P.WHYTE DATE: 1999/05/04 APPROVED BY: M.WILHITE DATE: 1999/05/04	TITLE APPLI-MATE 2.5 FEMALE 5MM TERMINAL PITCH		MATERIAL NO. SEE CHARTS		DOCUMENT NO. SD-90872-001	SHEET NO. 3 OF 3
	DRAFT WHERE APPLICABLE MUST REMAIN WITHIN DIMENSIONS						THIS DRAWING CONTAINS INFORMATION THAT IS PROPRIETARY TO MOLEX INCORPORATED AND SHOULD NOT BE USED WITHOUT WRITTEN PERMISSION
	MOLEX INCORPORATED						MOLEX INCORPORATED