



TAI-SAW TECHNOLOGY CO., LTD.

No. 3, Industrial 2nd Rd., Ping-Chen Industrial District,
Taoyuan, 324, Taiwan, R.O.C.

TEL: 886-3-4690038 FAX: 886-3-4697532

E-mail: tstsales@mail.taisaw.com Web: www.taisaw.com

Approval Sheet For Product Specification

Issued Date:

Product Name: 96MHz IF SAW Filter (BW=1.6 MHz)

TST Parts No.: TB0479A

Customer Parts No.: _____

Company: _____
Division: _____
Approved by : _____
Date: _____

Checked by: _____ Andy Yu

Approval by: _____ Francis Chen

Date: _____ 2008/02/5



TAI-SAW TECHNOLOGY CO., LTD.

No.3, Industrial 2nd Rd., Ping-Chen Industrial District, Taoyuan, Taiwan, R.O.C.

TEL: 886-3-4690038 FAX: 886-3-4697532

E-mail: tstsales3@mail.taisaw.com Web: www.taisaw.com

SAW Filter 96MHz 1.6MHz BW (SMD 13.3×6.5 mm)

MODEL NO.: TB0479A

MODEL NO.: 1.0

A. MAXIMUM RATING:

1. Operating Temperature: -30°C to 85°C

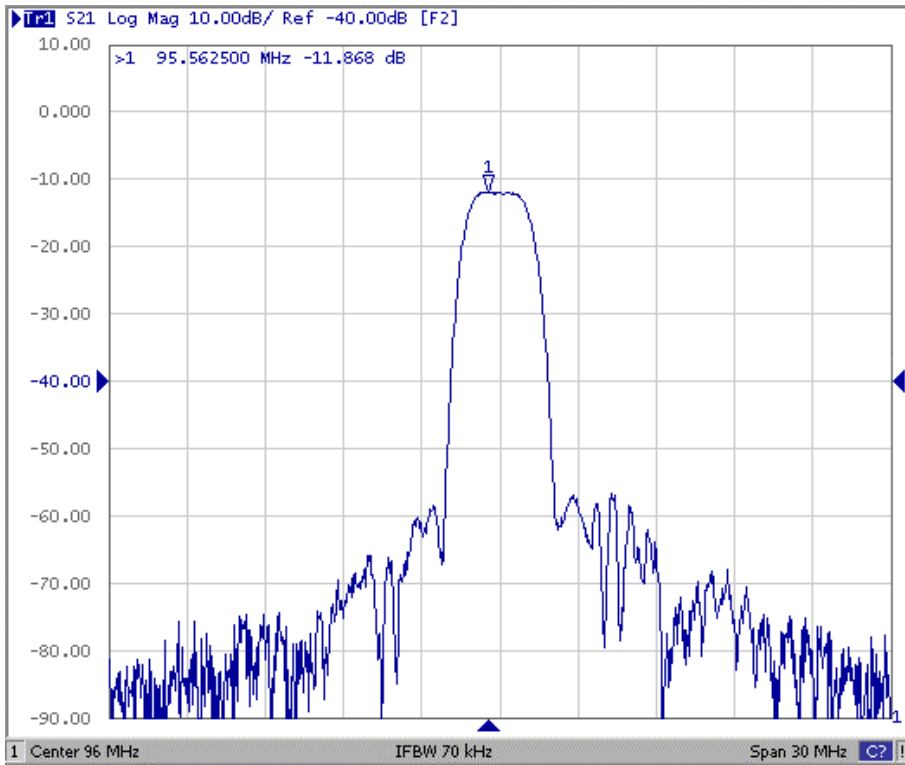
2. Storage Temperature: -40°C to 85°C

B. Characteristics :

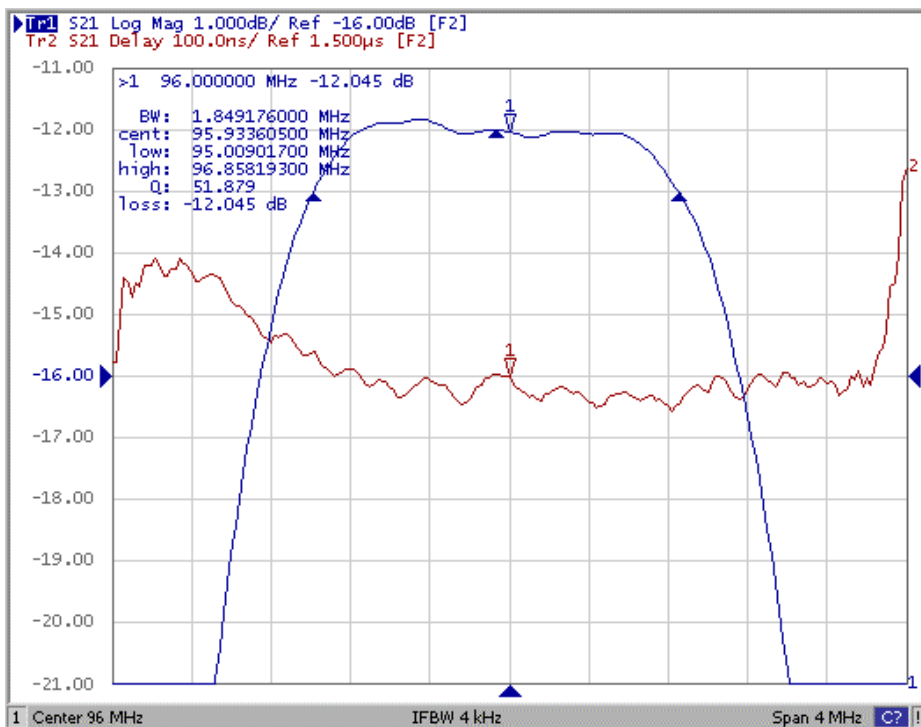
Item	Unit	Min.	Type.	Max.	Propose
Center frequency, Fc	MHz	-	96	-	
Insertion Loss, IL	DB	-	11.8	15	
1 dB Bandwidth	MHz	1.56	1.80	-	
Relative attenuation					
91MHz ---- 94.5MHz		6	9.5	-	
97.5MHz ----98.5MHz		6	11.5	-	
10MHz ---- 60 MHz	DB	55	72	-	
76.8MHz		55	72	-	
132MHZ ----135MHz		55	74	-	
135MHz ---- 1000MHz		35	58	-	
Passband Ripple					
95.2– 96.8 MHz	dB, p-p	-	0.9	1.2	
Group Delay Ripple					
95.2– 96.8 MHz	nsec	-	62	120	

C. Frequency Characteristics :

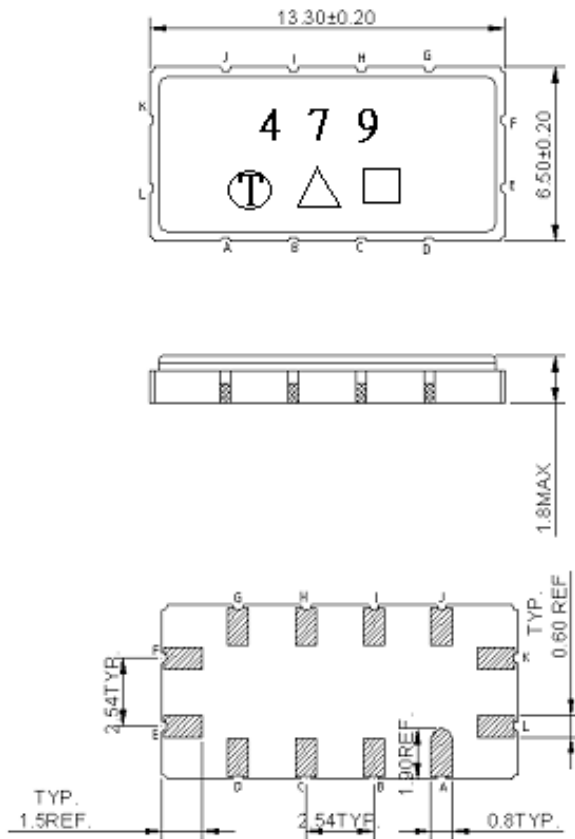
(1) wide band Response:(span 30MHz)



(2) Pass band Response:(span 4MHz)



D. Outline Drawing:



Pin K: RF input +

Pin L: RF input -

Pin E: RF output +

Pin F: RF output -

Pin A, B, C, D, G, H, I, J: To be Ground

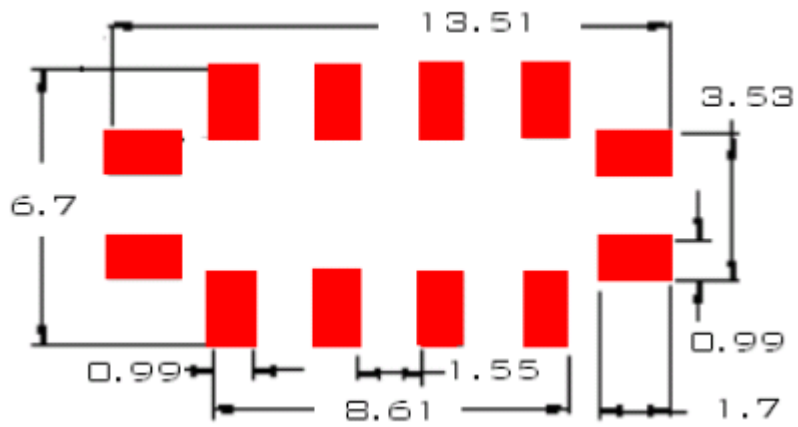
□ : Week Code (Follow the table from planner each year)

Unit : mm

△ : Product / Year Code

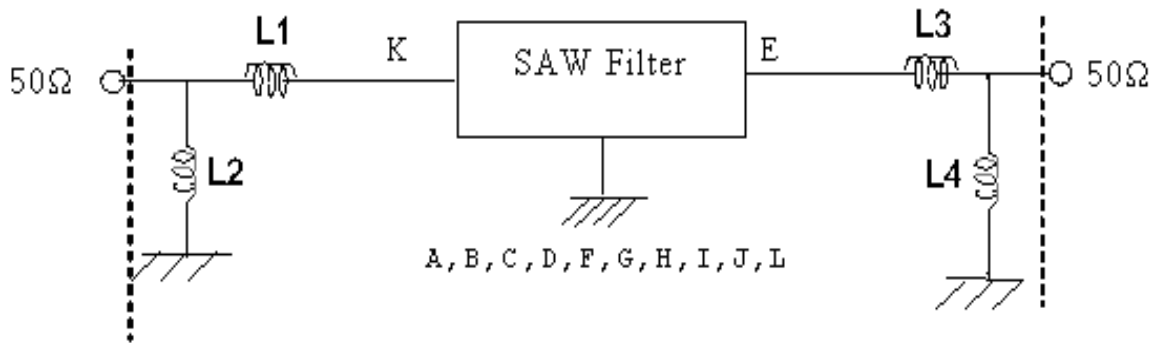
Year	2005 2009	2006 2010	2007 2011	2008 2012
Product Code	B	b	<u>B</u>	<u>b</u>

E. PCB Footprint:



F. Matching Circuit:

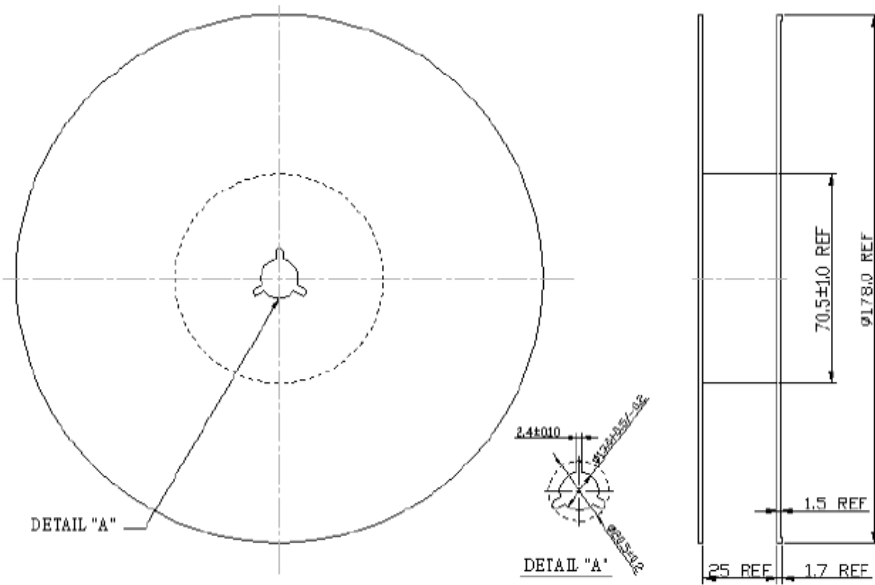
Network analyzer



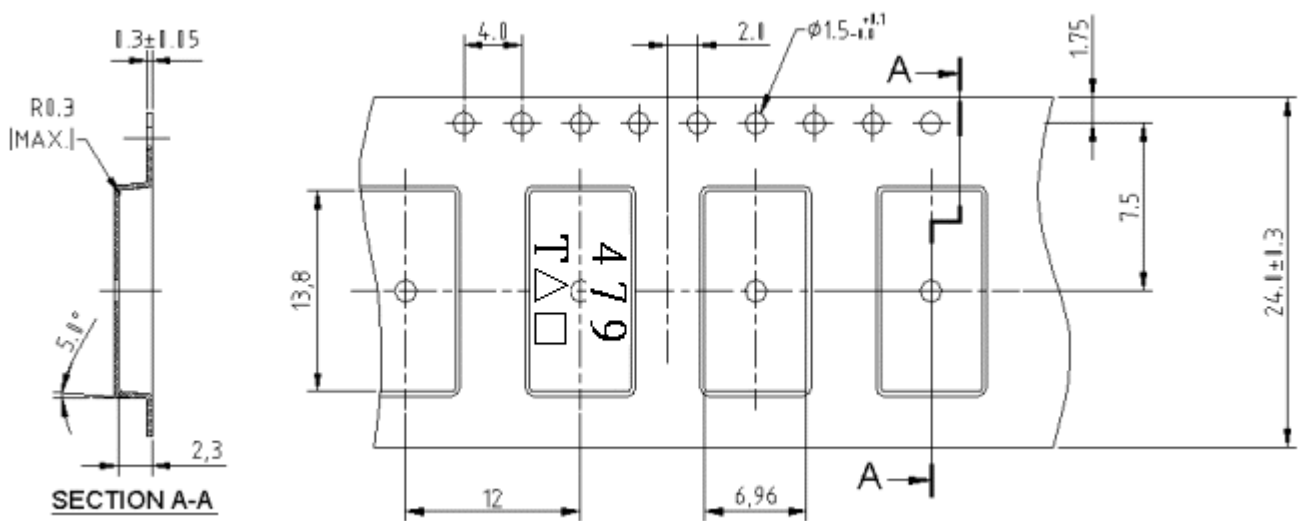
$L1=306\text{nH}, C1=39\text{pF}; L2=317\text{nH}, C2=56\text{pF}$

G. Packing:

(1). REEL DIMENSION:



(2). TYPE DIMENSION:



H. Recommended Reflow Profile:

