



70PzS 490(2V490Ah)



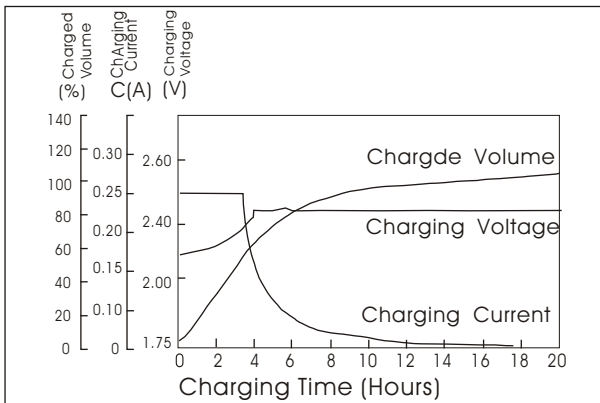
Specifications

| | | |
|-------------------------------|--------------|-----------------------|
| Nominal Voltage | | 2 V |
| Rated capacity (10 hour rate) | | 490Ah |
| Dimensions | Total Height | 547 mm (21.5 inches) |
| | Height | 471mm (18.5inches) |
| | Length | 166mm(6.5inches) |
| | Width | 206 mm (8.11inches) |
| Weight Approx (dry weight) | | 29Kg (63.8lbs) |

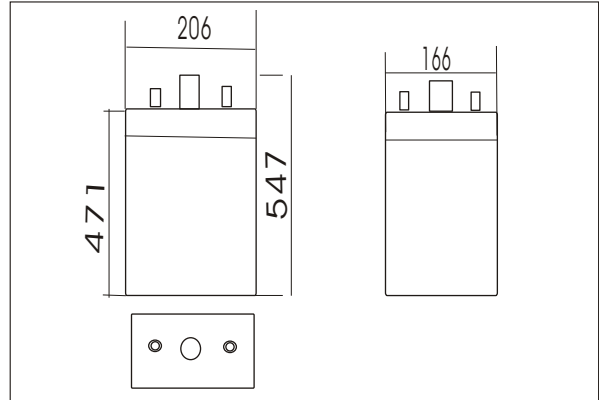
Characteristics

| | | |
|--|---|---------|
| Capacity 25°C(77°F) | 10 hour rate(49A) | 490Ah |
| | 1 hour rate(220.5A) | 220.5Ah |
| | 0.5 hour rate(343A) | 171.5Ah |
| Capacity affected by Temperature (10hour rate) | 40°C(104°F) | 102% |
| | 25°C(77°F) | 100% |
| | 0°C(32°F) | 85% |
| | -15°C(5°F) | 65% |
| Self-Discharge at 25°C(77°F) | Capacity after 3 month storage | 91% |
| | Capacity after 6 month storage | 82% |
| | Capacity after 12 month storage | 64% |
| Terminal quantity | 2 | |
| Charge (constant Voltage) | Initial Charging Current less than 122.5A Voltage 2.33-2.38V | |

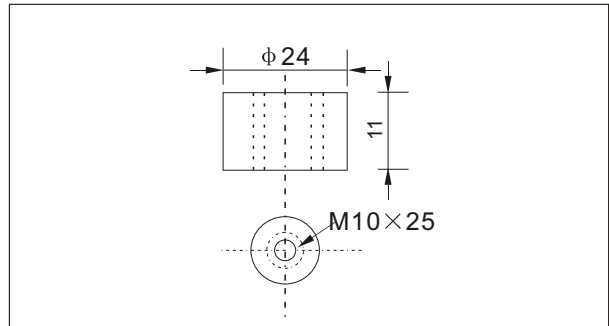
Charging characteristics(25°C)



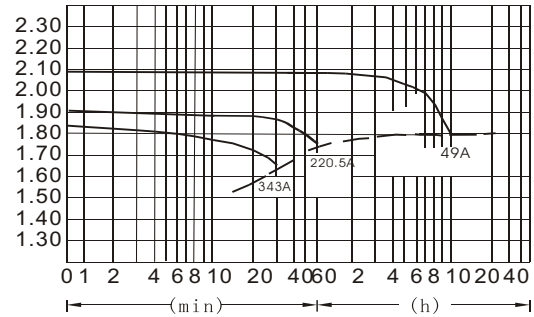
Outer dimensions (mm)



Terminal Type (mm)



Discharge Curves 25°C(77°F)



Cycling Curves

