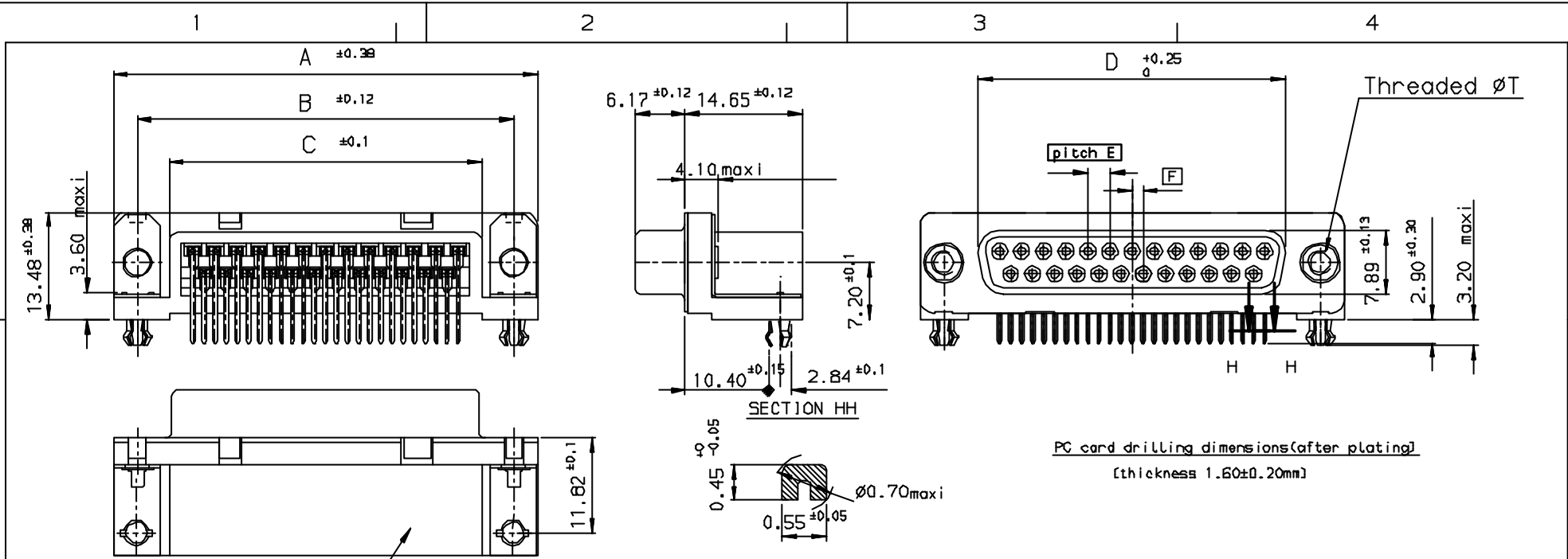


Tous droits strictement réservés. Reproduction ou communication a des tiers interdite sans autorisation écrite de la Direction des Conception. Propriété de FCI. Droits de reproduction FCI.

FCI

All rights strictly reserved. Reproduction or communication to third parties in any form without the written authorization of the Design Director is prohibited. Property of FCI. Copyright FCI.



Part Number & Date Code Printing

		PART NUMBER					LF FOR LEAD FREE		
SHELL	A ± 0.38	B ± 0.12	C ± 0.10	D ± 0.25	G ± 0.25	Plating: 0.75 μ AU	Plating: Flash AU	Plating: 0.4 μ AU	
09	30.81	24.99	16.96	16.21	5.90	D09S23A6G*00**	D09S23A4G*00**	D09S23A5G*00**	
15	39.14	33.32	25.18	24.54	5.90	D15S23A6G*00**	D15S23A4G*00**	D15S23A5G*00**	
25	53.03	47.04	39.12	38.25	5.70	D25S23A6G*00**	D25S23A4G*00**	D25S23A5G*00**	
37	69.32	63.50	55.68	54.71	5.70	D37S23A6G*00**	D37S23A4G*00**	D37S23A5G*00**	

REQUIREMENTS

Technical characteristics:

- Shell: steel tin plated
- Insulators: self-extinguishing black polyester, UL 94V0
- Contacts size 20: phosphor bronze, gold on mating end, bright tin on termination and over nickel on entire contact
- Cycles: 500 For protection 5
200 For protection 4 and 5
- Harpoons: phosphor bronze, tin plated
- Metal plate for electrical continuity: brass, tin plated
- Nuts: brass, tin plated torque: 0.7 Nm

Electrical characteristics:

- max. current rating: 15A
- Test voltage: 1000V
- Rated voltage: 300V
- Contact resistance: < 15mΩ
- Shell resistance: < 5mΩ
- Insulation resistance: > 5000MΩ

Climatic characteristics:

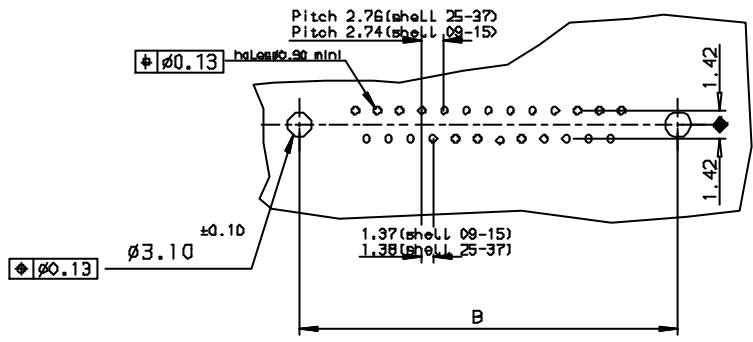
- Operating temperature range: -55°C +125°C

Dimensions:

In accordance with MIL-C-24308

Threaded ØT M3 = L
Threaded ØT 4.40 = X

PC card drilling dimensions (after plating)
(thickness 1.60 ± 0.20mm)



FOR ROHS DETAILS REFER DWG. NO: C01-8646-0000

Utr	Eon no	Dr	date
c	105-0124	JS	27/7/05

		✓ Tolerance LINEAR ± 0.1 ANGULAR ± 1°		Projection		MM	
Dr	JOHN ELEBA	29/5/08	Product Family	D-SUB	Size	A3	Scale
Eng	GEORGE VJ	29/5/08	Spec ref				
Chr	GEORGE VJ	27/7/05	Material		ECN		
Appr	K Somasundaram	27/7/05					
Title		SOCKET CONNECTOR DELTA D with nut , harpoon , metal bracket		Dwg no		C01-8646-0021	
Catalog no		DELTA-D		CUSTOMER COPY		Sheet 1 of 1	

INDEX	DATE	REVISION DESCRIPTION
c	27/7/05	LEAD FREE DETAILS ADDED