

PowerVolt, Inc.

300 Factory Road, Addison, IL 60101-5004

Ph: (630) 628-9999; Fax: (630) 628-9922

Web Site: www.powervolt.com

Specification Sheet

Series: 14P (WorldPower Series - International Power transformer)

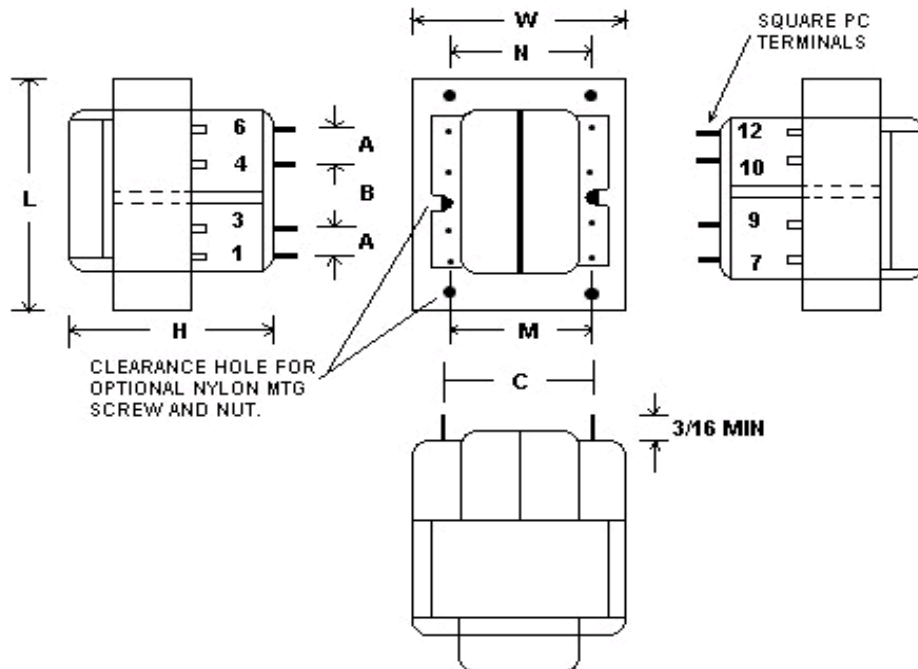
VA : 56

Model # 14P-56-24

Schematics

Individual Outpt	Series Outpt	Parallel Outpt
<p>• Indicates like Polarity</p> <p>Input : 1 - 3 & 4 - 6</p> <p>Input Jumper : None</p> <p>Output Jumper : None</p> <p>Output : 7 - 9 , 10 - 12</p> <p>Input Voltage : 115/230V @ 50/60Hz</p> <p>Output Voltage : 2 x 12Vac @2.33Amps</p>	<p>• Indicates like Polarity</p> <p>Input : 1 - 6</p> <p>Input Jumper : 3 & 4</p> <p>Output Jumper : 9 & 10</p> <p>Output : 7 - 12</p> <p>Input Voltage : 230V @ 50/60Hz</p> <p>Output Voltage : 24V.C.T @2.33Amps</p>	<p>• Indicates like Polarity</p> <p>Input : 1 - 6</p> <p>Input Jumper : 1 & 4, 3 & 6</p> <p>Output Jumper : 7 & 10 , 9 & 12</p> <p>Output : 7 - 12</p> <p>Input Voltage : 115V @ 50/60Hz</p> <p>Output Voltage : 12Vac @4.66Amps</p>

Dimensions



L	W	H	A	B	C	M	N	P
3.00"	2.50"	1.81"	0.600"	0.300"	1.900"	-	2.00"	2.50"