

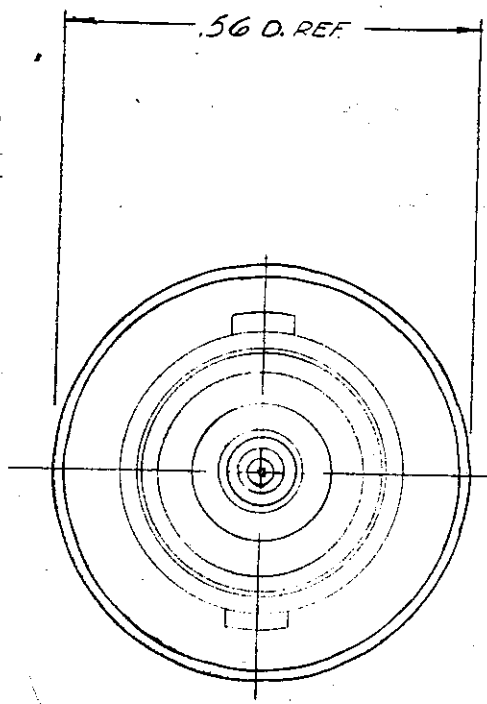
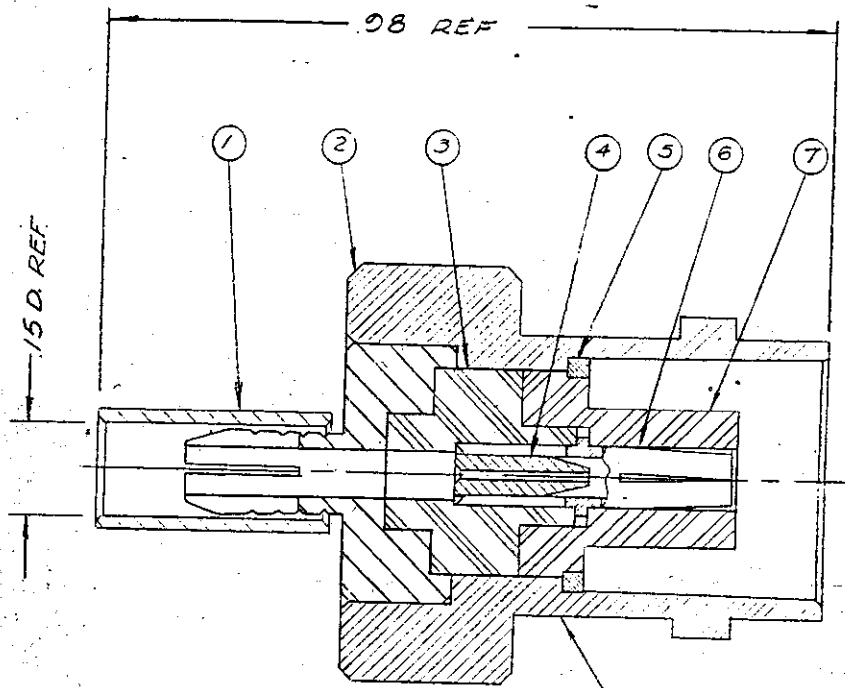
KC-39-50

REVISIONS

ISSUE	CHANGES
0	EP 655A J.M. 13 SEPT 68
1	CN 15047A GA 4 NOV 75
2	CN 1770BE NM 11 NOV 77
3	CN 18932C M.A. 6 NOV 78
4	CN 18687C GMF 5 NOV 79

MASTER
S-D

REP:	
FINISH	
SPEC. KER 10004	
MATL.	
SPEC.	
BNC JACK	
DRAWN J.M.	DATE 13 SEPT 68
APPR. [Signature]	DATE 9-13-68
KINGS ELECTRONICS 40 HARLEDALE ROAD TUCKAHOE, N. Y.	
DWG NO.	KC-39-50



STAMP: KINGS KC-39-50

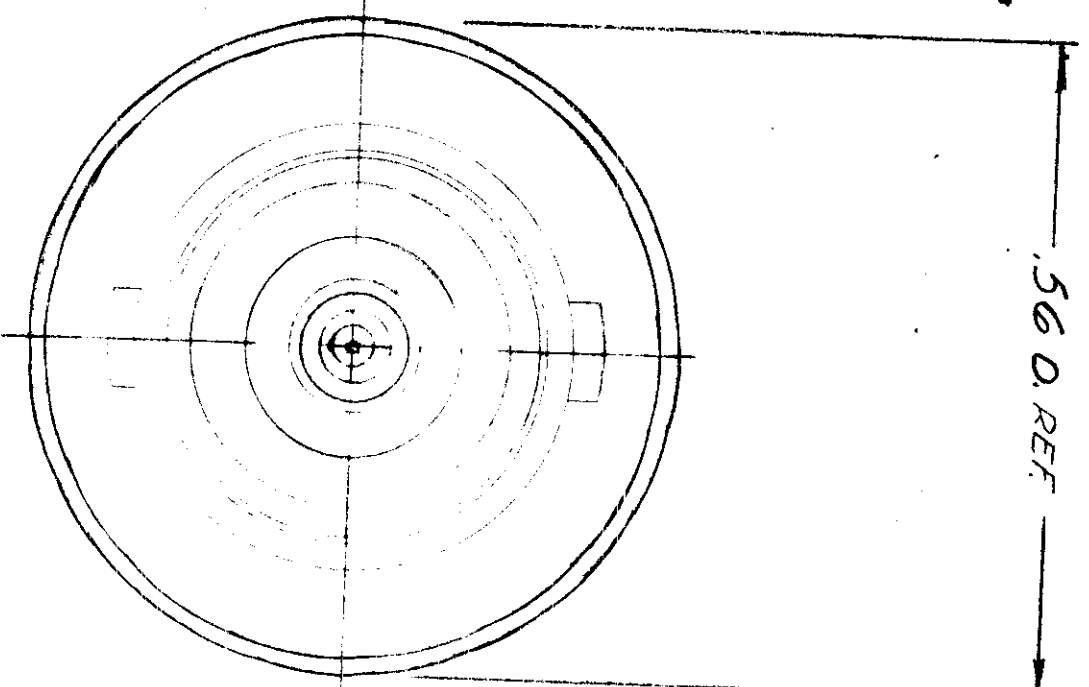
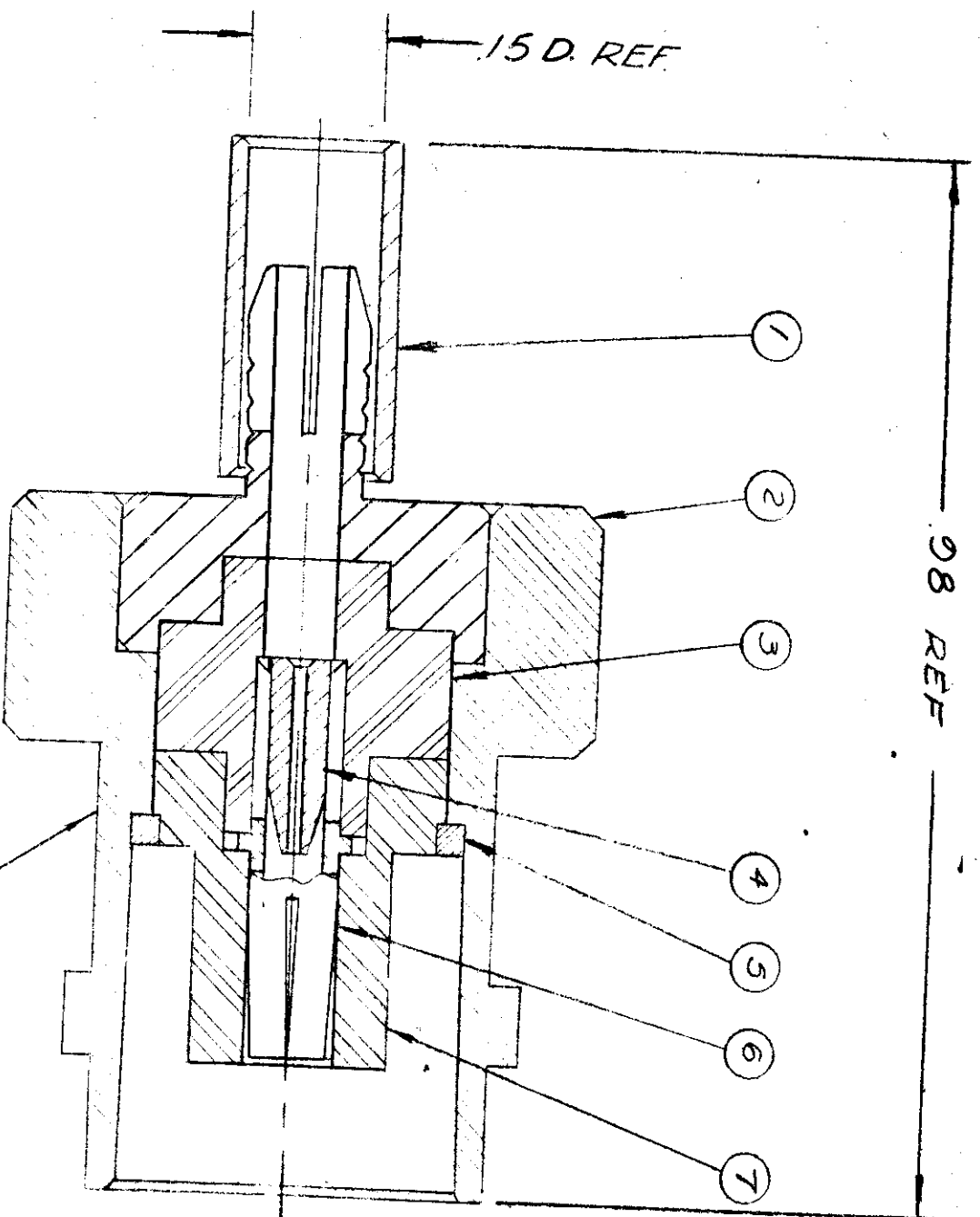
NOTES:

- FOR USE WITH RG-174, 188, 188A/U, & RG 316/U CABLE GROUP.
- FOR FORMING USE "DIE" SIZE KTH-2032
- FOR CABLING INSTRUCTIONS SEE CP-406.
- FOR CABLE TRIMMING USE KTJ-38.

UNLESS OTHERWISE SPECIFIED:

- | | |
|---|--|
| 1. TOLERANCES:
FRACTIONS ± .010 DECIMALS ± .004 ANGLES ± 0° 30' | 2. REMOVE ALL BURRS. BREAK SHARP EDGES .003 MAX. |
| T. I. R. CONCENTRICITY OF ANY 2 DIAMETERS MAY NOT EXCEED THE SUM OF THEIR TOLERANCES. | 3. NO FILLETS PERMITTED. |
| | 4. SURFACE ROUGHNESS 63 MICROINCHES RMS MAX. |
| | 5. ALL DIMENSIONS PRIOR TO PLATING. |

ITEM	REQ'D	DESCRIPTION	DWG NO.
7	1	INSULATOR	
6	1	CONTACT	
5	1	RETAINING RING	
4	1	CRIMP CONTACT	C-59-95-2MOT
3	1	INSULATOR	
2	1	K-GRIP BODY ASS'Y	
1	1	K GRIP SLEEVE	S-59-GT-2M06
TEM	REQ'D	DESCRIPTION	DWG NO.



STAMP: KINGS KC-39-50

- NOTES:
1. FOR USE WITH RG-174, 179A, 179B, 197, 197A, 188 & 188A/U CABLE
 2. FOR FORMING USE DIE SIZE 06.
 3. FOR CABLING INSTRUCTIONS SEE CP-408.
 4. FOR CABLE TRIMMING USE KTJ-38.
 5. SAME AS KC-39-34 EXCEPT FOR FINISH.

- UNLESS OTHERWISE SPECIFIED:
1. TOLERANCES: FRACTIONS ± .010 DECIMALS ± .004 ANGLES ± 0° 30'
 2. REMOVE ALL BURRS. BREAK SHARP EDGES .003 MAX.
 3. NO FILLETS PERMITTED.
 4. SURFACE ROUGHNESS 63 MICROINCHES RMS MAX.
 5. ALL DIMENSIONS PRIOR TO PLATING.
- T.I.R. CONCENTRICITY OF ANY 2 DIAMETERS MAY NOT EXCEED THE SUM OF THEIR TOLERANCES.

KC-39-50

ISSUE	REVISIONS
CHANGES	
0	EP 6594 JM 1356PT68
1	CN 15047A GA 4 NOV 75
2	CN 17768BE NM 11 NOV 77
3	CN 18932C M.A.G NOV 78
4	CN 18687C GMF 5 NOV 75

ITEM	RECD	DESCRIPTION	DWG NO
1	1	INSULATOR	C-39-34-3-M99
2	1	CONTACT	C-39-34-2-M07
3	1	RETAINING RING	E-2252-M06
4	1	GRIND CONTACT	C-59-95-2-M07
5	1	INSULATOR	C-59-95-4-M99
6	1	K-GRIP BODY ASSY	2-162-4-M06
7	1	K GRIP SLEEVE	5-89-67-2-M06

REF:

FINISH

SPEC: KER 10004

MATL.

SPEC:

BNC JACK

DRAWN/INM DATE 1356PT68

APPR. DATE 9-13-78

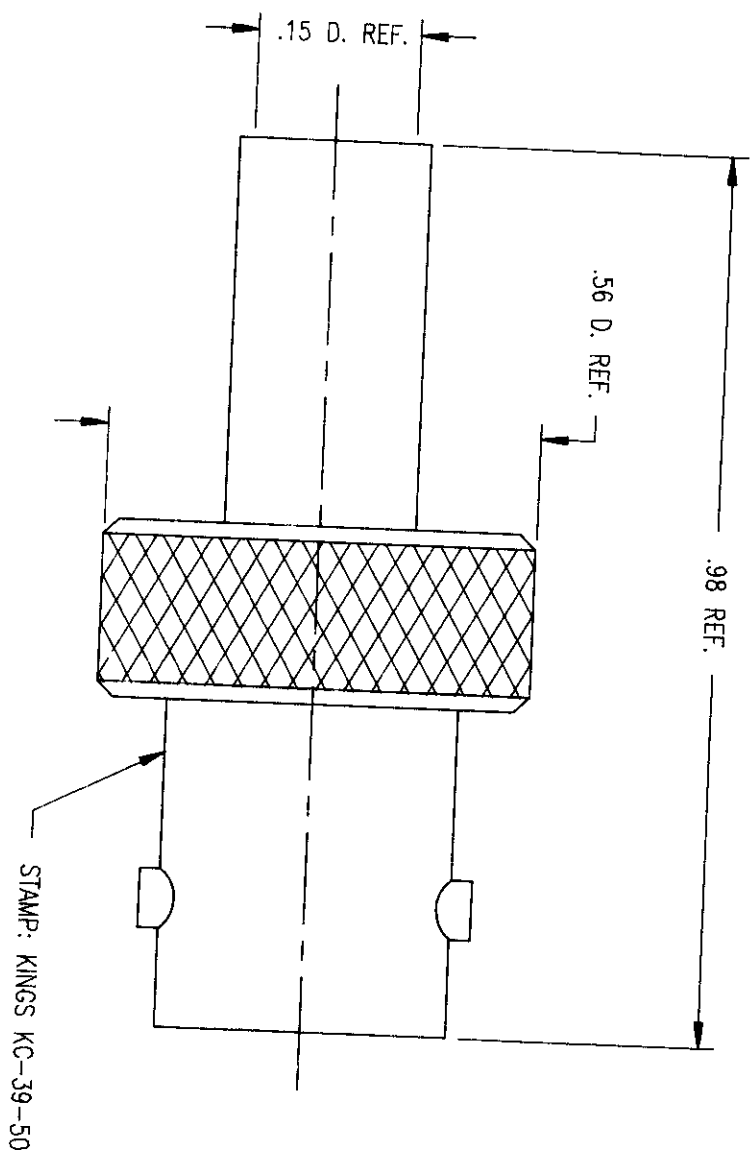
KINGS ELECTRONICS
40 MARLBOROUGH ROAD
TUCKAHOE, N. Y.

KC-39-50

GSD

REVISIONS	
ISSUE	CHANGES
4	CN 18687 C GMF 11/05/79

KC-39-50



- NOTES:
1. FOR USE WITH RG-174, 179A, 179B, 187, 187A, 188, & 188A/U CABLE.
 2. FOR CABLING INSTRUCTIONS SEE CP-406.
 3. FOR CABLE TRIMMING USE KTJ-38.
 4. FOR CRIMPING USE DIE KTH-2032.
 5. MATERIALS:
INSULATORS: TEFLON, ASTM-D-1457
K-GRIP SLEEVE: COM. BRONZE TUBING, ALLOY 220
CENTER CONTACT: BER. COPPER, ASTM-B-196
ALL OTHER METAL PARTS: BRASS, QQ-B-626
 6. FINISHES:
CENTER CONTACT } SILVER PLATE, QQ-S-365
CRIMP CONTACT }
ALL OTHER METAL PARTS: KINGS TARNISH RESISTANT FINISH (TR-5)
 7. ELECTRICAL CHARACTERISTICS:
NOMINAL IMPEDANCE: 50 OHMS
WORKING VOLTAGE: 500 VRMS
FREQUENCY RANGE: DC TO 4 GHz.

GSD

SCALE	4:1
APPROX SURFACE AREA	
USED ON	
REF:	
JACK, BNC	
DRAWN	WJM
DATE	02/19/91
DESIGN	MJB
DATE	02/22/91
APPR.	
 ELECTRONICS CO., INC. TUCKAHOE, NEW YORK 10707	
KC-39-50	