



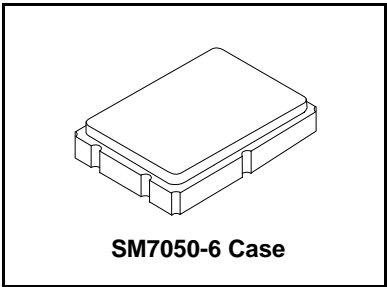
XFL8001

- Crystal Filter
- Surface Mount Seam Weld Package
- 2-pole IF Filter
- High Reliability
- Complies with Directive 2002/95/EC (RoHS)



**76.8 MHz
Crystal Filter**

Surface mount 5.0 x 7.0 x 1.27 mm Crystal Filter



Electrical Characteristics

Characteristic	Sym	Notes	Minimum	Typical	Maximum	Units
Center Frequency	F ₀		76.8 MHz, Third Overtone			MHz
Insertion Loss					3.0	dB
Ripple (@ ±4 kHz)					1.0	dB
3 dB Passband				±4		kHz
Stopband (@ ±60 kHz)			35			dB
Spurious			10			dB
Terminating Impedance				1500Ω/-1.4		pF
Power Level					10	dBm
Operating Temperature (without lost of function)			-40 ~ +85			°C
Lid Symbolization (in addition to Lot and/or Date Codes)			8001 YWWS			

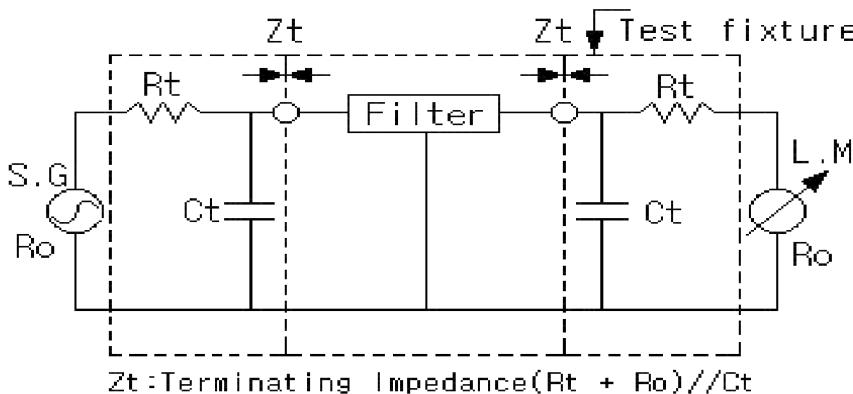


CAUTION: Electrostatic Sensitive Device. Observe precautions for handling.

Notes:

1. The design, manufacturing process, and specifications of this device are subject to change without notice.

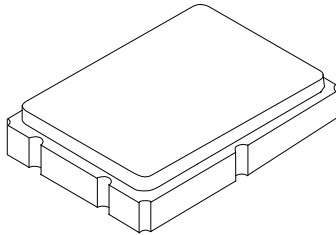
Testing Circuit



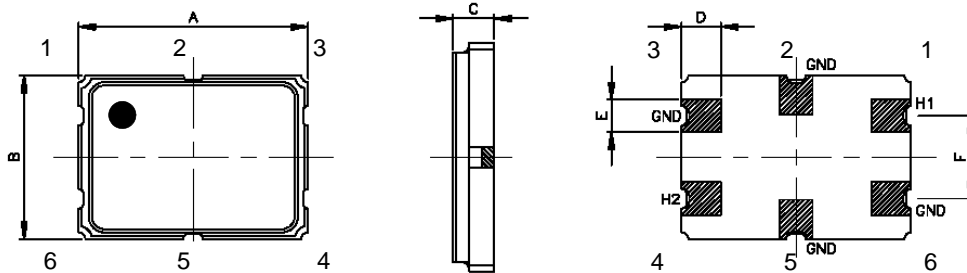
R _t	1450 ohms
R _o	50 ohms
C _t	-1.4 pF

SM7050-6 Case

6-Terminal Surface-Mount Case 5.0 x 7.0 mm Nominal Footprint



Mechanical Dimensions (mm):



A	B	C	D	E	F
7.00 ±0.18	5.00 ±0.18	1.27 ±0.20	1.21 ±0.13	0.99 ±0.13	2.54 ±0.13

Tape Dimensions (mm):

Marking
Line1: 8001
Line2: YWWS (Y=year, WW=week, S=shift)

