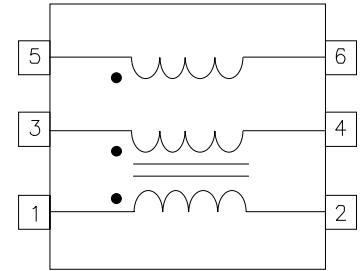


# SCR Trigger & Control Transformer

Turns Ratio ( ± 5 % )	2 : 1 : 1 (1-2) : (3-4) : (5-6)		
-----------------------	------------------------------------	--	--

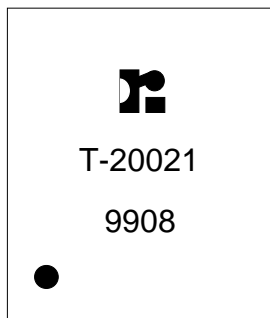
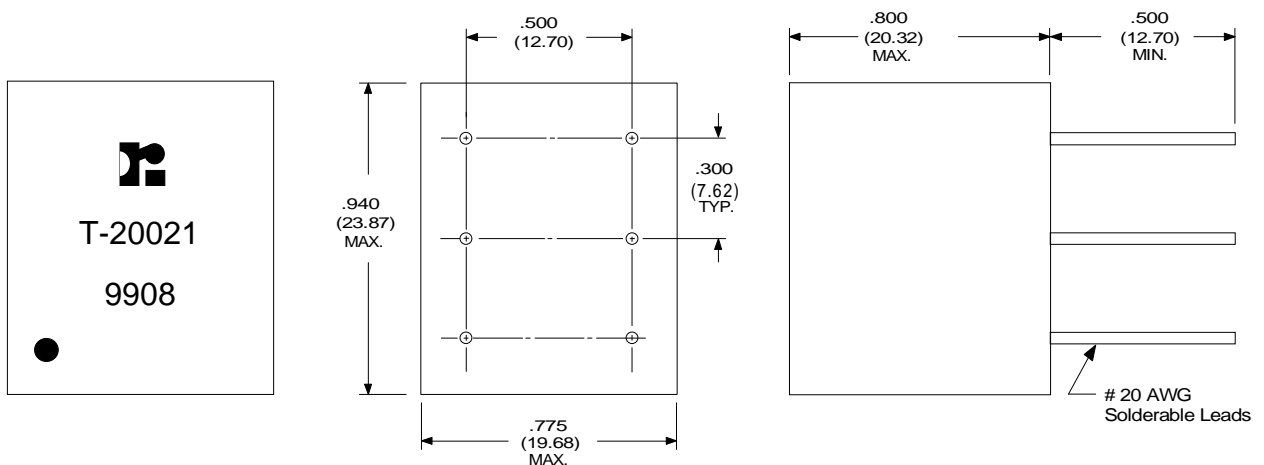
PARAMETER	MIN	MAX	UNITS
Inductance Pins 1-2 <sup>1</sup>	0.2		mH
Leakage Inductance <sup>2</sup>		22	μH
Capacitance (C <sub>W/W</sub> ) <sup>3</sup>		34	pF
E-T Product		290	V - μs
Primary DC Resistance		1.4	ohms
Secondary DC Resistance		1.0	ohms
Hi-pot	2400		V <sub>RMS</sub>

Schematic Diagram



1. Tested at 20 kHz and 100 mV.
2. Tested at 50 kHz and 100 mV, Pins 1-2,  
With 3,4,5, and 6, Shorted.
3. Tested at 50 kHz and 100 mV.

## PHYSICAL DIMENSIONS inches (mm)



RHOMBUS P/N: T-20021	
CUST P/N:	NAME:
DATE: 1/25/01	SHEET: 1 of 1