

PLEASE CHECK WWW.MOLEX.COM FOR LATEST PART INFORMATION

Part Number: [0579206002](#)
Status: **Active**
Description: 2.29mm (.090") Diameter Pin Cluster Block Connector Terminal, Wire Range AWG 16-18

Documents:

[Drawing \(PDF\)](#) [Product Specification PS-68422-001 \(PDF\)](#)
[Product Specification PS-35573-001 \(PDF\)](#) [RoHS Certificate of Compliance \(PDF\)](#)

General

Product Family	Crimp Terminals
Series	57920
Crimp Quality Equipment	Yes
Product Name	N/A

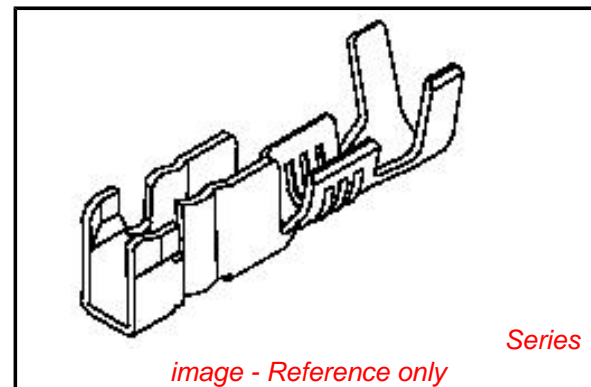
Physical

Durability (mating cycles max)	10
Gender	Female
Material - Metal	Phosphor Bronze
Material - Plating Mating	Tin
Material - Plating Termination	Tin
Packaging Type	Reel
Wire Insulation Diameter	2.15-2.45
Wire Size AWG	16, 18
Wire Size mm ²	N/A

Material Info

Reference - Drawing Numbers

Product Specification	PS-35573-001, PS-68422-001
Sales Drawing	SD-57920-001



EU RoHS

**ELV and RoHS
Compliant**
**REACH SVHC
Contains SVHC: No**
**Halogen-Free
Status**

China RoHS



**Need more information on product
environmental compliance?**

Email productcompliance@molex.com
 For a multiple part number RoHS Certificate of Compliance, [click here](#)

Please visit the [Contact Us](#) section for any non-product compliance questions.

Search Parts in this Series

[57920Series](#)

Use With

[35573](#) , [68422](#) Housing

DO NOT SCALE DRAWING
DIMENSION IN METRIC

DWG. IO.
SD-57920-001

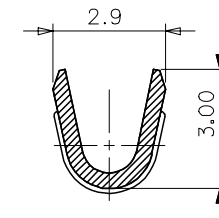
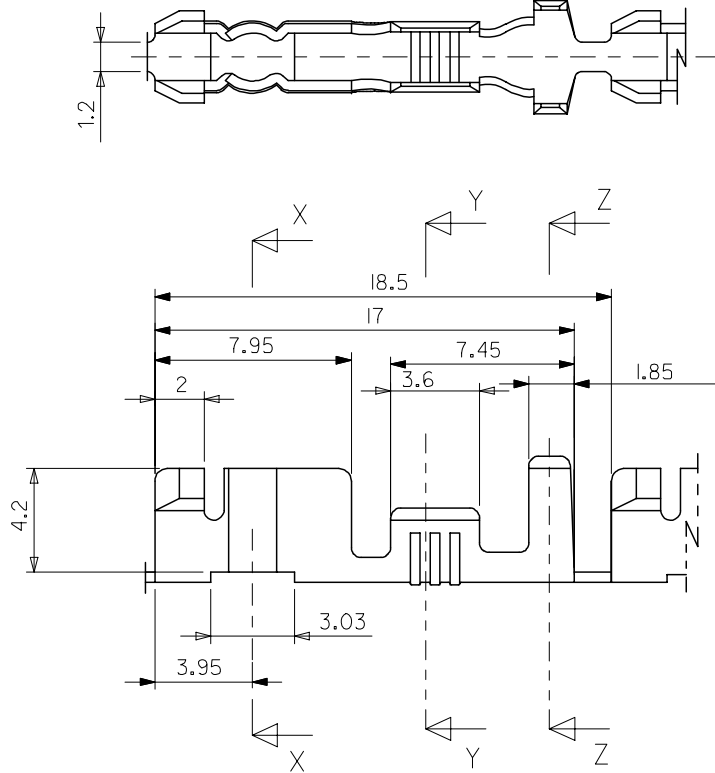
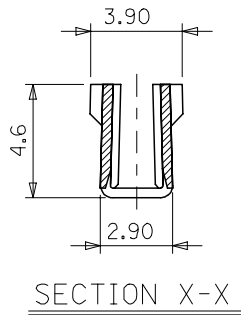
SIMILAR ITEM

PROJECT NO.

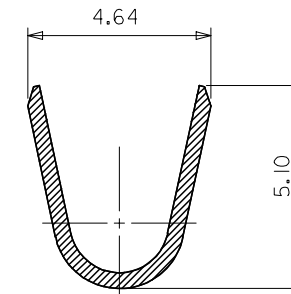
C

B

MATERIAL NO.	ENGINEERING NO.
579206002	57920-6002



SECTION Y-Y
(SCALE: 8:1)



SECTION Z-Z
(SCALE: 8:1)

NOTES

1. MATERIALS : PHOSPHOR BRONZE, 0.4mm THICK
2. FINISH : TIN-PLATING
3. APPLICABLE WIRE : AWG#18-16

NEW RELEASED EC NO. KOR2002-0093 DRWN: C.B.CHIN 02/03/21 CHK: W.Y.YANG APPR: C.W.LEE	DESCRIPTION REV	QUALITY SYMBOLS	GENERAL TOLERANCES: (UNLESS SPECIFIED)	SCALE 5:1	DESIGN UNITS <input checked="" type="checkbox"/> mm <input type="checkbox"/> INCH	THIRD ANGLE PROJECTION	DIMENSIONS: <input type="checkbox"/> mm <input type="checkbox"/> INCH <input checked="" type="checkbox"/> mm ONLY	SHT	REV	
		MAJOR = 0	mm	INCH	DRAWN BY & DATE W.Y.YANG 99/11/13	TITLE: CLUSTER TERMINAL (2.29 DIA. PIN)	MATERIAL NO. SEE CHART	DRAWING NO. SD-57920-001	SHEET NO. 1 OF 1	
		CRITICAL = 0	4 PLACES	±0.	±.					CHECKED BY & DATE B.K.CHOI 99/11/13
			3 PLACES	±0.25	±.					APPROVED BY & DATE C.W.LEE 99/11/13
		1 PLACE	±0.25	±.	CAD FILENAME S57920.dgn					
			ANGULAR: ±	°	THIS DRAWING CONTAINS INFORMATION THAT IS PROPRIETARY TO MOLEX INCORPORATED AND SHOULD NOT BE USED WITHOUT WRITTEN PERMISSION.					
DRAFT WHERE APPLICABLE MUST REMAIN WITHIN DIMENSIONS								SIZE B		

MX-A3