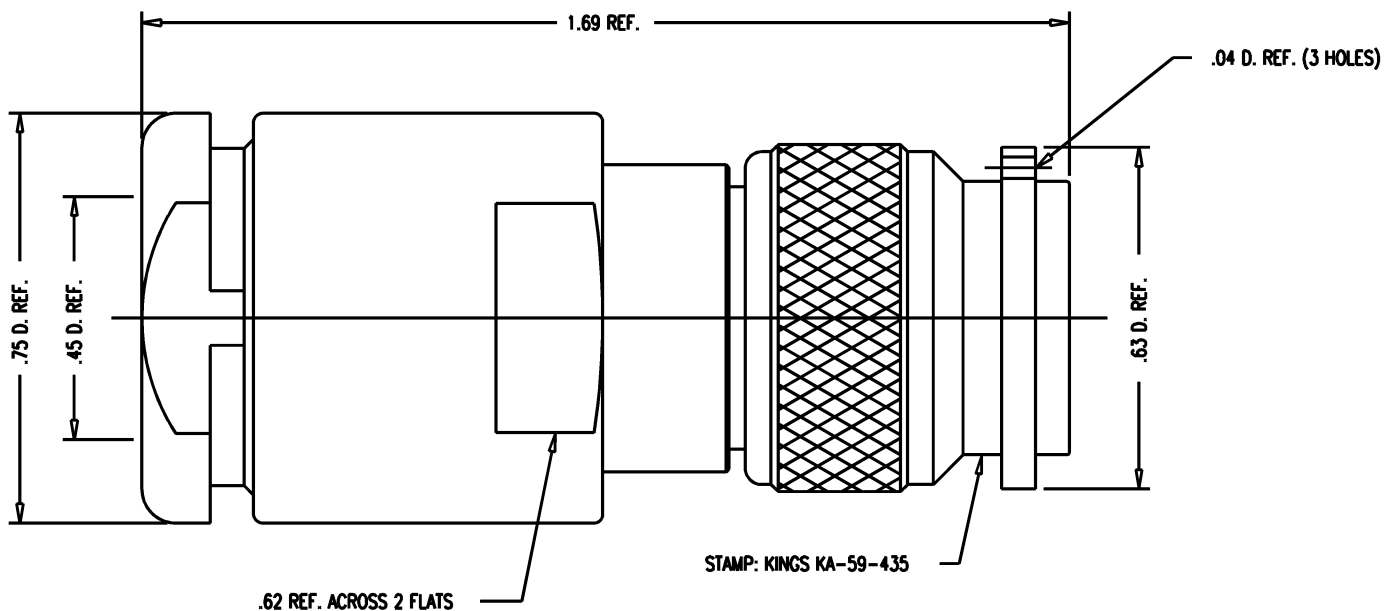


DASH NO.	M CODE	MADE FROM
----------	--------	-----------

# GSD

KA-59-435



**NOTES:**

- FOR USE WITH RG-214, 225, 393 & 9/U CABLE.
- FOR CABLING INSTRUCTIONS SEE CP-230A.
- FOR CRIMPING USE DIE KTH-2004
- INTERFACE PER MIL-STD-348, FIG. 313-1.
- MARKING PACKAGE: 30-085-3  
KINGS KA-59-435  
XXXX (DATE CODE)
- MATERIALS:  
INSULATORS: TEFLON, ASTM-D-4894  
K-GRIP SLEEVE: COMMERCIAL BRONZE, ASTM-B-135  
GASKETS: SILICONE RUBBER, ZZ-R-765  
OUTER CONTACT: BER. COP., ASTM-B-196  
ALL OTHER PARTS: BRASS, ASTM-B16
- FINISHES:  
CENTER CONTACT: GOLD PLATE PER MIL-G-45204  
ALL OTHER METAL PARTS: KINGS TARNISH RESISTANT NICKEL FINISH (TR-5)
- ELECTRICAL CHARACTERISTICS:  
NOMINAL IMPEDANCE: 50 OHMS  
VOLTAGE RATING: 500 VRMS  
FREQUENCY RANGE: DC TO 11 GHz

**REVISIONS**

ISSUE	CHANGES
1	CN 37201 A REDRAWN KH 11/25/96

KAM6875

SCALE	4:1	
APPROX SURFACE AREA		
USED ON		
REF:	BELL HELICOPTER 30-083-3 REV. J	
<b>PLUG, TNC</b>		
DRAWN	KH	11/25/96
DESIGN	PB	11/26/96
APPR.		DATE

**KINGS**  
ELECTRONICS CO., INC.  
TUCKAHOE, NEW YORK 10707

KA-59-435

# GSD