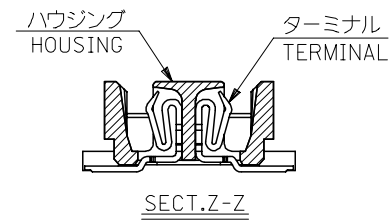
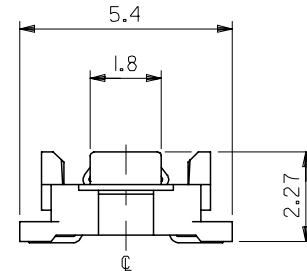


参考基板レイアウト (マウント面)  
P.C. BOARD PATTERN  
DIMENSION. (REF.)  
(MOUNTING AREA)

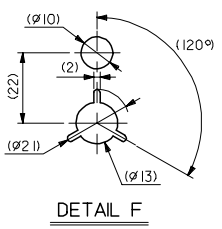
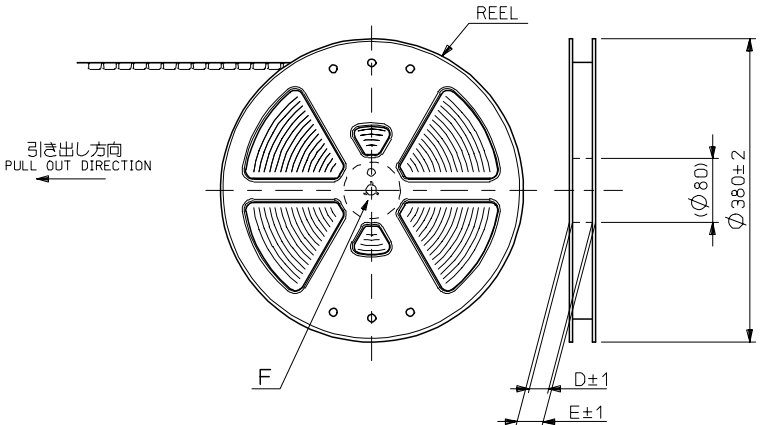


注記 NOTES:

1. 使用材料 MATERIAL  
ハウジング: LCPガラス入り (黒) UL94V-0  
HOUSING: LCP(G.F.)(COLOR :BLACK),  
UL94V-0  
ターミナル: リン青銅 (t=0.15)  
TERMINAL: PHOSPHOR BRONZE (t=0.15)
2. メッキ仕様 PLATING  
全体仕上げ: 金メッキ 0.1 MICROMETER MIN.  
ALL OVER : GOLD 0.1 MICROMETER MIN.  
下地メッキ: ニッケルメッキ 1.5 MICROMETER MIN.  
UNDER PLATING : NICKEL 1.5 MICROMETER MIN.
3. 基準面 [X] からのソルダーテールの半田付け面のズレ量は、上方向 0、  
下方向 0.15MAX. とする。  
MISALIGNMENT OF SOLDER TAIL FROM [X]  
: UPPER DIRECTION 0, LOWER DIRECTION 0.15 MAX.
4. (全極数/2) = 偶数の場合に適用。  
APPLY FOR (CIRCUIT/2)=EVEN.
5. 嵌合相手: 53748 シリーズ, 53916 シリーズ, 502280 シリーズ  
MATE WITH : 53748 SERIES, 53916 SERIES, 502280 SERIES.
6. テール平坦度は、0.IMAX.  
TAIL COPLANARITY TO BE 0.IMAX.

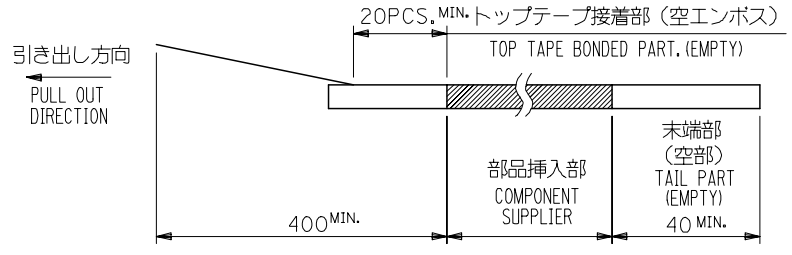
|      |      |      |              |               |
|------|------|------|--------------|---------------|
| 20.2 | 19.5 | 23.8 | 54167-0801   | 80            |
| 17.7 | 17.0 | 21.3 | -0701        | 70            |
| 15.2 | 14.5 | 18.8 | -0601        | 60            |
| 12.7 | 12.0 | 16.3 | -0501        | 50            |
| 10.2 | 9.5  | 13.8 | -0401        | 40            |
| 7.7  | 7.0  | 11.3 | -0301        | 30            |
| 5.2  | 4.5  | 8.8  | 54167-0201   | 20            |
| C    | B    | A    | MATERIAL NO. | 極数<br>CIRCUIT |

|  |  |       |                            |                   |  |                        |                           |
|--|--|-------|----------------------------|-------------------|--|------------------------|---------------------------|
| REVISED<br>EC NO: J2007-0273<br>DRWN: TENAGASE 2006/07/28<br>CHKD: THARUYAMA 2006/08/03<br>APPR: NUKITA 2006/08/07 | GENERAL TOLERANCES<br>(UNLESS SPECIFIED)                   |       | DIMENSION STYLE<br>MM ONLY |                   | SCALE<br>---   | DESIGN UNITS<br>METRIC | THIRD ANGLE<br>PROJECTION |
|  | 10 UNDER   | ±0.2  | DRAWN BY<br>S. AIHARA      | DATE<br>'96/11/28 | TITLE<br>0.5 B/B CONN REC HSG<br>ASSY(W/O BOSS, W/O NAIL)<br>-LEAD FREE-   |                        |                           |
|  | 10 OVER 30 UNDER   | ±0.25 | CHECKED BY<br>M. SASAO     | DATE<br>'01/12/26 | MOLEX INCORPORATED   |                        |                           |
|  | 30 OVER  | ±0.3  | APPROVED BY<br>M. SASAO    | DATE<br>'01/12/26 | DOCUMENT NO.<br>SD-54167-001   | SHEET NO.<br>1 OF 1    |                           |
|  | ANGULAR  | ±3 °  | MATERIAL NO.<br>SEE CHART  |                   | THIS DRAWING CONTAINS INFORMATION THAT IS PROPRIETARY TO MOLEX<br>INCORPORATED AND SHOULD NOT BE USED WITHOUT WRITTEN PERMISSION |                        |                           |
|  | DRAFT WHERE APPLICABLE<br>MUST REMAIN<br>WITHIN DIMENSIONS |       | SIZE<br>A3                 |                   |  |                        |                           |

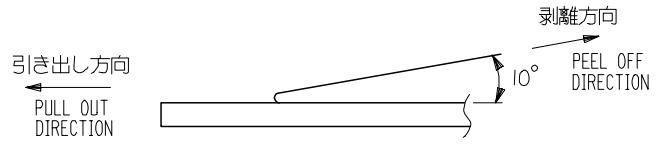


NOTES

- 製品詳細寸法については図面 SD-54167-001 を参照下さい。  
RE DETAILED DIMENSION, SEE SD-54167-001
- 梱包数量：3000個/リール  
NUMBER OF CONNECTORS : 3000PCS/REEL
- リードテープ長さ LEAD TAPE LENGTH



- トップテープの剥離強度：0.1N~1.3 (10gf~130gf) (剥離方向は下図参照)  
尚、本規格値は出荷時に適用。(但し、輸送時に剥離が発生しないこと。)  
PEELING OFF FORCE OF TOP TAPE : 0.1N~1.3 (10gf~130gf)  
(PEELING DIRECTION AS SHOWN IN FOLLOWING FIG.)  
THIS REQUIREMENT SHOULD BE APPLIED AT SHIPMENT.  
PEEL OFF SHOULD NOT BE ALLOWED , DURING TRANSPORTATION.



- 材料(MATERIAL)  
キャリアテープ(CARRIER TAPE)：ポリプロピレン(POLYPROPYLENE)  
トップテープ(TOPTAPE)：PET , PE , PEF  
リール(REEL)：ポリスチレン (PS) <リサイクル材を含む>  
POLYSTYREN(PS) <RECYCLE MATERIAL CONTAINED>

54167\*\*\*8 MODEL NO.

|   |                                       |               |                             |  |   |                        |
|---|---------------------------------------|---------------|-----------------------------|--|---|------------------------|
| REVISED<br>EC NO: J2006-0604<br>DRW:NAIDA 2005/08/31<br>CHKD:KTOYODA 2005/09/01<br>APPR:NUKITA 2005/09/09 | GENERAL TOLERANCES (UNLESS SPECIFIED) |               | DIMENSION STYLE<br>MM ONLY  | SCALE<br>---   | DESIGN UNIT'S<br>METRIC   | THIRD ANGLE PROJECTION |
|   | 10 UNDER                              | $\pm 0.2$     | DRAWN BY<br>S. AIHARA       | DATE<br>'96/11/25  | TITLE<br>0.5 B/B CONN REC HSG<br>ASSY EMBSTP PKG<br>-LEAD FREE- |                        |
|   | 10 OVER 30 UNDER                      | $\pm 0.25$    | CHECKED BY<br>T. ITO        | DATE<br>'00/12/06  | MOLEX INCORPORATED  |                        |
|   | 30 OVER                               | $\pm 0.3$     | APPROVED BY<br>M. FUKUSHIMA | DATE<br>'00/12/06  | DOCUMENT NO.<br>SD-54167-002                                    | SHEET NO.<br>1 OF 6    |
|   | ANGULAR                               | $\pm 3^\circ$ | MATERIAL NO.<br>SEE CHART   |  |   |                        |
| DRAFT WHERE APPLICABLE<br>MUST REMAIN<br>WITHIN DIMENSIONS  |                                       | SIZE<br>A3    |                             | THIS DRAWING CONTAINS INFORMATION THAT IS PROPRIETARY TO MOLEX<br>INCORPORATED AND SHOULD NOT BE USED WITHOUT WRITTEN PERMISSION |   |                        |

10 9 8 7 6 5 4 3 2 1

F

E

D

C

B

A

F

E

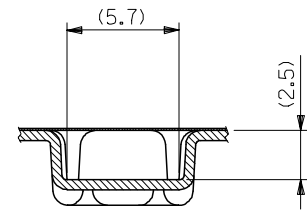
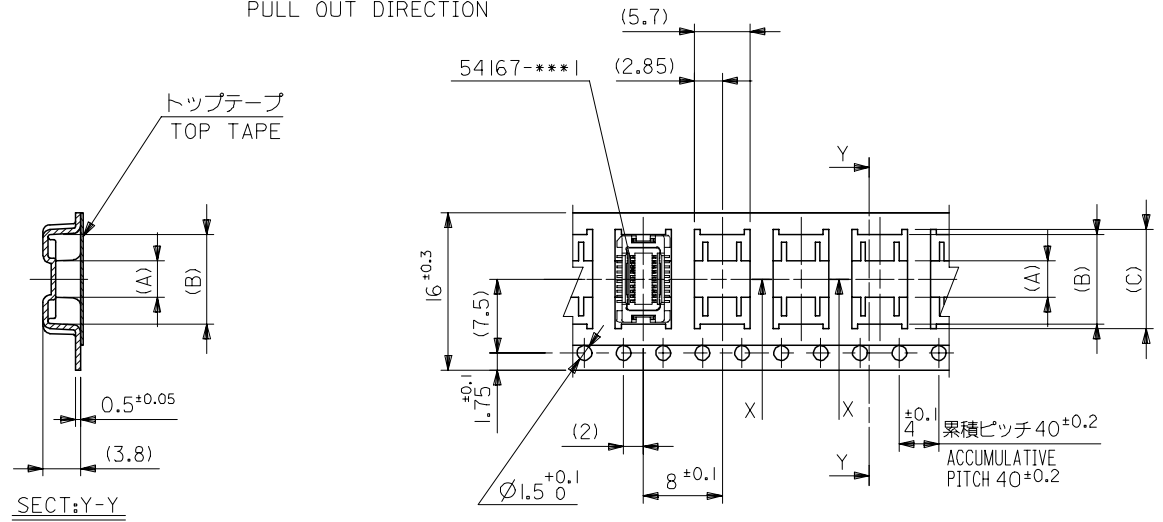
D

C

B

A

引き出し方向  
PULL OUT DIRECTION



16mm幅キャリアテープ  
16mm WIDTH CARRIER TAPE

|              |  |                    |  |   |  |              |  |  |  |                 |  |            |  |  |  |
|--------------|--|--------------------|--|---|--|--------------|--|--|--|-----------------|--|------------|--|--|--|
| REVISED      |  | EC NO: J2006-0604  |  | 2005/08/31  |  | 2005/08/31   |  | 2005/09/01   |  | 2005/09/01      |  | 2005/09/09 |  | 2005/09/09                                       |  |
| DRWN:NAIDA   |  | CHKD:TOYODA        |  | APPR:NUKITA   |  | DESCRIPTION  |  | GENERAL TOLERANCES (UNLESS SPECIFIED)                |  | DIMENSION STYLE |  | SCALE      |  | DESIGN UNITS                                     |  |
| 10 UNDER     |  | ± ---              |  | 10 OVER   |  | 30 UNDER     |  | ± ---  |  | MM ONLY         |  | ---        |  | METRIC   |  |
| 30 OVER      |  | ± ---              |  | ANGULAR   |  | ± --- °      |  | DRAFT WHERE APPLICABLE MUST REMAIN WITHIN DIMENSIONS |  | DRAWN BY        |  | DATE       |  | TITLE  |  |
| MATERIAL NO. |  | SEE CHART          |  | DOCUMENT NO.  |  | SD-54167-002 |  | SHEET NO.  |  | S. AIHARA       |  | '97/05/09  |  | 0.5 B/B CONN REC HSG ASSY EMBSTP PKG -LEAD FREE- |  |
| SIZE         |  | A3                 |  | THIS DRAWING CONTAINS INFORMATION THAT IS PROPRIETARY TO MOLEX INCORPORATED AND SHOULD NOT BE USED WITHOUT WRITTEN PERMISSION |  | M. FUKUSHIMA |  | '00/12/06  |  | M. FUKUSHIMA    |  | '00/12/06  |  | MOLEX MOLEX INCORPORATED                         |  |
| 54167***8    |  | MODEL NO.          |  | 16  |  | 21.4         |  | 17.4   |  | 10.1            |  | 9.1        |  | 3.7  |  |
| キャリアテープ幅     |  | CARRIER TAPE WIDTH |  | E   |  | D            |  | (C)  |  | (B)             |  | (A)        |  | 54167-0208                                       |  |
| 極数           |  | CIRCUIT            |  | 20  |  | MATERIAL NO. |  | 20   |  | MATERIAL NO.    |  | 20         |  | 20   |  |

10 9 8 7 6 5 4 3 2 1

F

E

D

C

B

A

F

E

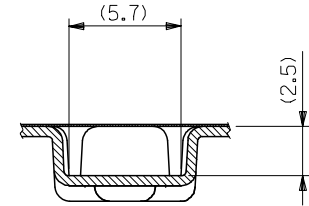
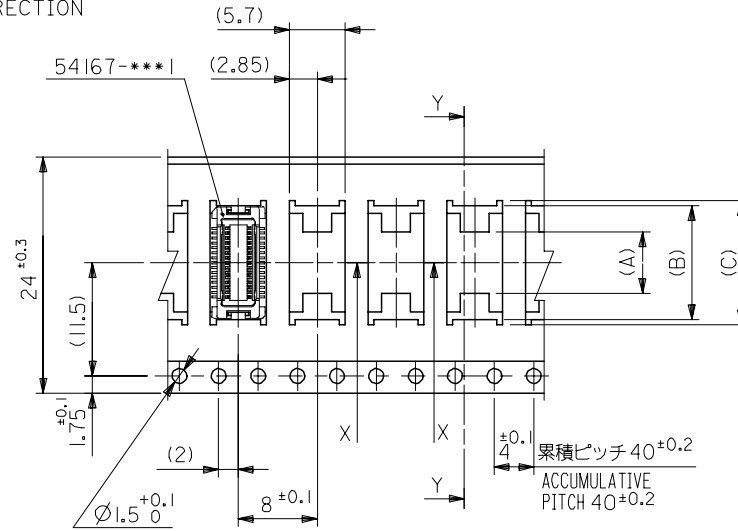
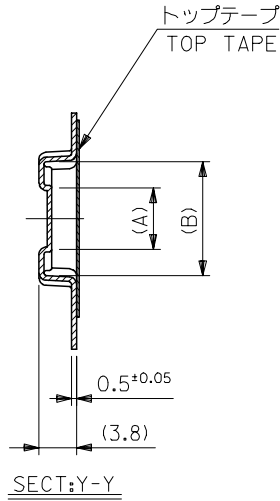
D

C

B

A

引き出し方向  
PULL OUT DIRECTION



24mm幅キャリアテープ  
24mm WIDTH CARRIER TAPE

|                                |      |      |      |      |     |            |              |               |
|--------------------------------|------|------|------|------|-----|------------|--------------|---------------|
| 24                             | 29.4 | 25.4 | 15.1 | 14.1 | 7.4 | 54167-0408 | 40           |               |
|                                |      |      | 12.6 | 11.6 | 4.9 | 54167-0308 | 30           |               |
| キャリアテープ幅<br>CARRIER TAPE WIDTH |      | E    | D    | (C)  | (B) | (A)        | MATERIAL NO. | 極数<br>CIRCUIT |

|                                       |  |            |            |            |             |            |             |
|---------------------------------------|--|------------|------------|------------|-------------|------------|-------------|
| REVISED                               | EC NO: J2006-0604                                    | 2005/08/31 | DRWN:NAIDA | 2005/09/01 | CHKD:TOYODA | 2005/09/09 | APPR:NUKITA |
| DESCRIPTION                           | 54167***8 MODEL NO.                                  |            |            |            |             |            |             |
| GENERAL TOLERANCES (UNLESS SPECIFIED) | 10 UNDER ± ---                                       |            |            |            |             |            |             |
|                                       | 10 OVER 30 UNDER ± ---                               |            |            |            |             |            |             |
|                                       | 30 OVER ± ---  |            |            |            |             |            |             |
|                                       | ANGULAR ± --- °                                      |            |            |            |             |            |             |
|                                       | DRAFT WHERE APPLICABLE MUST REMAIN WITHIN DIMENSIONS |            |            |            |             |            |             |

|  |                   |   |                        |                        |  |
|--|-------------------|---|------------------------|------------------------|--|
| DIMENSION STYLE<br>MM ONLY                 |                   | SCALE<br>---  | DESIGN UNITS<br>METRIC | THIRD ANGLE PROJECTION |  |
| DRAWN BY<br>S. AIHARA                      | DATE<br>'97/05/09 | TITLE<br>0.5 B/B CONN REC HSG<br>ASSY EMBSTP PKG<br>-LEAD FREE-   |                        |                        |  |
| CHECKED BY<br>T. ITO                       | DATE<br>'00/12/06 | APPROVED BY<br>M. FUKUSHIMA   |                        |                        |  |
| APPROVED BY DATE<br>M. FUKUSHIMA '00/12/06 |                   | DOCUMENT NO.<br>SD-54167-002  |                        | SHEET NO.<br>3 OF 6    |  |
| MATERIAL NO.<br>SEE CHART                  |                   | THIS DRAWING CONTAINS INFORMATION THAT IS PROPRIETARY TO MOLEX INCORPORATED AND SHOULD NOT BE USED WITHOUT WRITTEN PERMISSION |                        |                        |  |

9

8

7

6

5

4

3

2

10 9 8 7 6 5 4 3 2 1

F

E

D

C

B

A

F

E

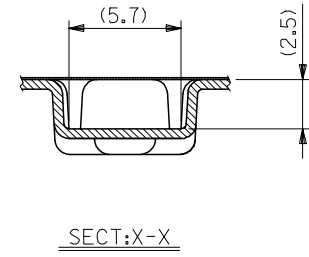
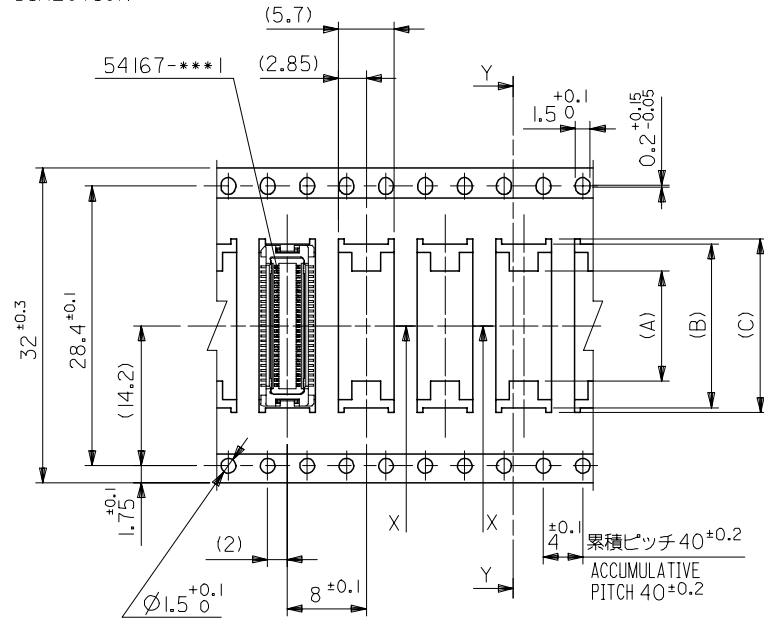
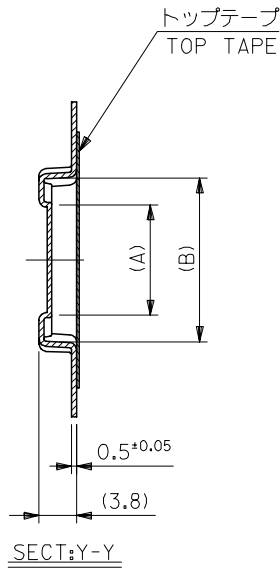
D

C

B

A

引き出し方向  
PULL OUT DIRECTION



32mm幅キャリアテープ  
32mm WIDTH CARRIER TAPE

|  |  |                   |  |   |  |              |  |              |  |                        |  |                 |  |                    |  |                        |  |                 |  |                    |  |      |  |            |  |              |  |     |  |     |  |              |  |    |  |
|--|--|-------------------|--|---|--|--------------|--|--------------|--|------------------------|--|-----------------|--|--------------------|--|------------------------|--|-----------------|--|--------------------|--|------|--|------------|--|--------------|--|-----|--|-----|--|--------------|--|----|--|
| REVISED  |  | EC NO: J2006-0604 |  | 2005/08/31  |  | 2005/09/01   |  | 2005/09/09   |  | 54167***8              |  | MODEL NO.       |  | 32                 |  | 37.4                   |  | 33.4            |  | 17.6               |  | 16.6 |  | 11.2       |  | 54167-0508   |  | 50  |  |     |  |              |  |    |  |
| DRAWN BY   |  | DATE              |  | TITLE   |  | SCALE        |  | DESIGN UNITS |  | THIRD ANGLE PROJECTION |  | DIMENSION STYLE |  | CARRIER TAPE WIDTH |  | E                      |  | D               |  | (C)                |  | (B)  |  | (A)        |  | MATERIAL NO. |  | 極数  |  |     |  |              |  |    |  |
| S. AIHARA  |  | '96/11/25         |  | 0.5 B/B CONN REC HSG<br>ASSY EMBSTP PKG<br>-LEAD FREE-  |  | ---          |  | METRIC       |  | ⊙ □                    |  | MM ONLY         |  | E                  |  | D                      |  | (C)             |  | (B)                |  | (A)  |  | 54167-0508 |  | 50           |  |     |  |     |  |              |  |    |  |
| CHECKED BY   |  | DATE              |  | MOLEX INCORPORATED  |  |              |  |              |  |                        |  |                 |  |                    |  |                        |  |                 |  |                    |  |      |  |            |  |              |  |     |  |     |  |              |  |    |  |
| T. ITO   |  | '00/12/06         |  | M. FUKUSHIMA  |  | '00/12/06    |  |              |  |                        |  |                 |  |                    |  |                        |  |                 |  |                    |  |      |  |            |  |              |  |     |  |     |  |              |  |    |  |
| APPROVED BY  |  | DATE              |  | MATERIAL NO.  |  | DOCUMENT NO. |  | SHEET NO.    |  |                        |  |                 |  |                    |  |                        |  |                 |  |                    |  |      |  |            |  |              |  |     |  |     |  |              |  |    |  |
| M. FUKUSHIMA   |  | '00/12/06         |  | SEE CHART   |  | SD-54167-002 |  | 4 OF 6       |  |                        |  |                 |  |                    |  |                        |  |                 |  |                    |  |      |  |            |  |              |  |     |  |     |  |              |  |    |  |
| GENERAL TOLERANCES (UNLESS SPECIFIED)                |  | 10 UNDER          |  | ± ---   |  | DRAWN BY     |  | DATE         |  | TITLE                  |  | SCALE           |  | DESIGN UNITS       |  | THIRD ANGLE PROJECTION |  | DIMENSION STYLE |  | CARRIER TAPE WIDTH |  | E    |  | D          |  | (C)          |  | (B) |  | (A) |  | MATERIAL NO. |  | 極数 |  |
| 10 OVER 30 UNDER                                     |  | ± ---             |  | S. AIHARA   |  | '96/11/25    |  | ---          |  | METRIC                 |  | ⊙ □             |  | MM ONLY            |  | E                      |  | D               |  | (C)                |  | (B)  |  | (A)        |  | 54167-0508   |  | 50  |  |     |  |              |  |    |  |
| 30 OVER  |  | ± ---             |  | T. ITO  |  | '00/12/06    |  |              |  |                        |  |                 |  |                    |  |                        |  |                 |  |                    |  |      |  |            |  |              |  |     |  |     |  |              |  |    |  |
| ANGULAR  |  | ± --- °           |  | M. FUKUSHIMA  |  | '00/12/06    |  |              |  |                        |  |                 |  |                    |  |                        |  |                 |  |                    |  |      |  |            |  |              |  |     |  |     |  |              |  |    |  |
| DRAFT WHERE APPLICABLE MUST REMAIN WITHIN DIMENSIONS |  |                   |  | MATERIAL NO.  |  | DOCUMENT NO. |  | SHEET NO.    |  |                        |  |                 |  |                    |  |                        |  |                 |  |                    |  |      |  |            |  |              |  |     |  |     |  |              |  |    |  |
|  |  |                   |  | SEE CHART   |  | SD-54167-002 |  | 4 OF 6       |  |                        |  |                 |  |                    |  |                        |  |                 |  |                    |  |      |  |            |  |              |  |     |  |     |  |              |  |    |  |
|  |  |                   |  | THIS DRAWING CONTAINS INFORMATION THAT IS PROPRIETARY TO MOLEX INCORPORATED AND SHOULD NOT BE USED WITHOUT WRITTEN PERMISSION |  |              |  |              |  |                        |  |                 |  |                    |  |                        |  |                 |  |                    |  |      |  |            |  |              |  |     |  |     |  |              |  |    |  |

9

8

7

6

5

4

3

2

10 9 8 7 6 5 4 3 2 1

F

E

D

C

B

A

F

E

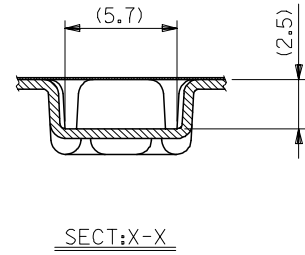
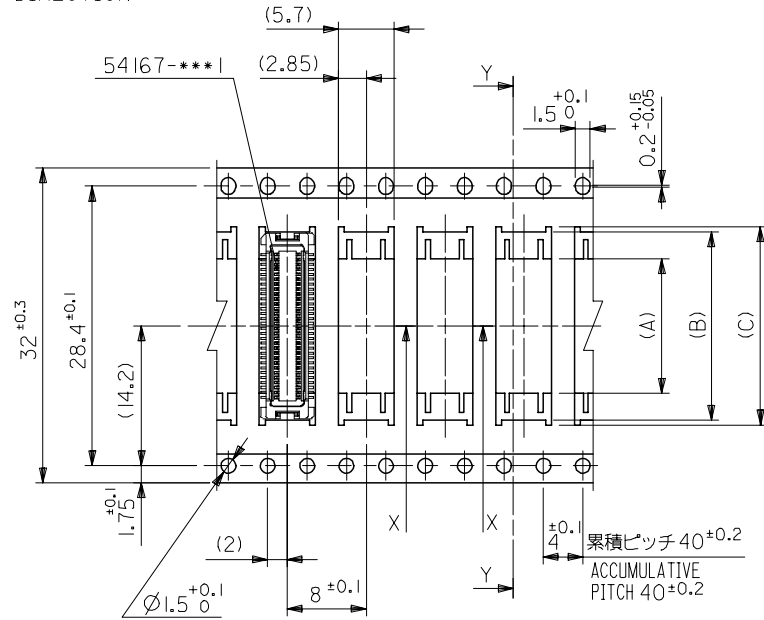
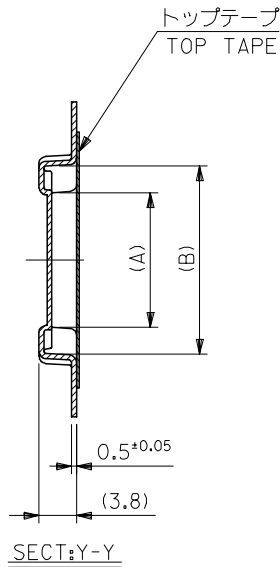
D

C

B

A

引き出し方向  
PULL OUT DIRECTION



32mm幅キャリアテープ  
32mm WIDTH CARRIER TAPE

|            |                   |             |  |            |             |           |              |                 |   |       |                      |              |      |                        |    |
|------------|-------------------|-------------|--|------------|-------------|-----------|--------------|-----------------|---|-------|----------------------|--------------|------|------------------------|----|
| REVISED    | EC NO: J2006-0604 | 2005/08/31  | 2005/09/01   | 2005/09/09 | DESCRIPTION | 54167***8 | MODEL NO.    | 32              | 37.4  | 33.4  | 20.1                 | 19.1         | 13.7 | 54167-0608             | 60 |
| DRWN:NAIDA | CHKD:TOYODA       | APPR:NUKITA | GENERAL TOLERANCES (UNLESS SPECIFIED)                |            |             | 10 UNDER  | ± ---        | DIMENSION STYLE |   | SCALE |                      | DESIGN UNITS |      | THIRD ANGLE PROJECTION |    |
|            |                   |             | 10 OVER 30 UNDER                                     |            |             | ± ---     | MM ONLY      |                 | ---   |       | METRIC               |              |      |                        |    |
|            |                   |             | 30 OVER  |            |             | ± ---     | DRAWN BY     |                 | DATE  |       | TITLE                |              |      |                        |    |
|            |                   |             | ANGULAR  |            |             | ± 1 °     | T. YASUI     |                 | '97/05/14   |       | 0.5 B/B CONN REC HSG |              |      |                        |    |
|            |                   |             | DRAFT WHERE APPLICABLE MUST REMAIN WITHIN DIMENSIONS |            |             |           | CHECKED BY   |                 | DATE  |       | ASSY EMBSTP PKG      |              |      |                        |    |
|            |                   |             |  |            |             |           | T. ITO       |                 | '00/12/06   |       | -LEAD FREE-          |              |      |                        |    |
|            |                   |             |  |            |             |           | APPROVED BY  |                 | DATE  |       | MOLEX INCORPORATED   |              |      |                        |    |
|            |                   |             |  |            |             |           | M. FUKUSHIMA |                 | '00/12/06   |       |                      |              |      |                        |    |
|            |                   |             |  |            |             |           | MATERIAL NO. |                 | DOCUMENT NO.  |       | SHEET NO.            |              |      |                        |    |
|            |                   |             |  |            |             |           | SEE CAHRT    |                 | SD-54167-002  |       | 5 OF 6               |              |      |                        |    |
|            |                   |             |  |            |             |           | SIZE         |                 | THIS DRAWING CONTAINS INFORMATION THAT IS PROPRIETARY TO MOLEX INCORPORATED AND SHOULD NOT BE USED WITHOUT WRITTEN PERMISSION |       |                      |              |      |                        |    |
|            |                   |             |  |            |             |           | A3           |                 |   |       |                      |              |      |                        |    |

9

8

7

6

5

4

3

2

10 9 8 7 6 5 4 3 2 1

F

E

D

C

B

A

F

E

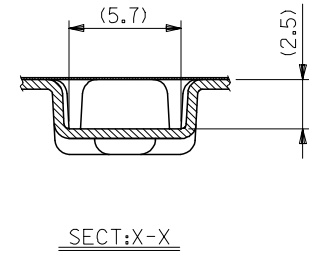
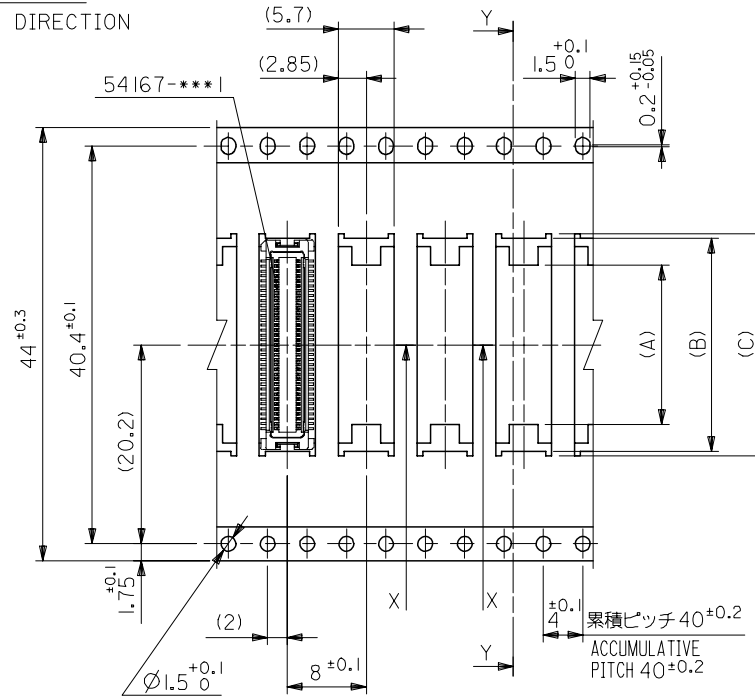
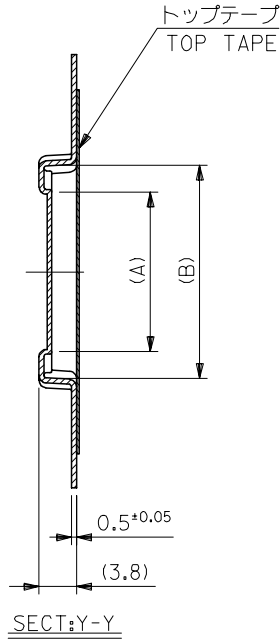
D

C

B

A

引き出し方向  
PULL OUT DIRECTION



44mm幅キャリアテープ  
44mm WIDTH CARRIER TAPE

|         |                   |            |            |            |              |            |             |  |           |           |                                |                   |  |                        |                     |                        |              |               |  |  |  |  |  |  |  |  |  |  |
|---------|-------------------|------------|------------|------------|--------------|------------|-------------|--|-----------|-----------|--------------------------------|-------------------|--|------------------------|---------------------|------------------------|--------------|---------------|--|--|--|--|--|--|--|--|--|--|
| REVISED | EC NO: J2006-0604 | 2005/08/31 | DRWN:NAIDA | 2005/09/01 | CHKD:KTOYODA | 2005/09/09 | APPR:NUKITA | DESCRIPTION  | 54167***8 | MODEL NO. | 44                             | 49.4              | 45.4   | 25.1                   | 24.1                | 17.5                   | 54167-0808   | 80            |  |  |  |  |  |  |  |  |  |  |
|         |                   |            |            |            |              |            |             | GENERAL TOLERANCES (UNLESS SPECIFIED)                      |           |           | キャリアテープ幅<br>CARRIER TAPE WIDTH | E                 | D  | (C)                    | (B)                 | (A)                    | MATERIAL NO. | 極数<br>CIRCUIT |  |  |  |  |  |  |  |  |  |  |
|         |                   |            |            |            |              |            |             | 10 UNDER ± ---   |           |           | DIMENSION STYLE<br>MM ONLY     |                   | SCALE<br>---   | DESIGN UNITS<br>METRIC |                     | THIRD ANGLE PROJECTION |              |               |  |  |  |  |  |  |  |  |  |  |
|         |                   |            |            |            |              |            |             | 10 OVER 30 UNDER ± ---                                     |           |           | DRAWN BY<br>S. AIHARA          | DATE<br>'98/10/23 | TITLE<br>0.5 B/B CONN REC HSG<br>ASSY EMBSTP PKG<br>-LEAD FREE-  |                        |                     |                        |              |               |  |  |  |  |  |  |  |  |  |  |
|         |                   |            |            |            |              |            |             | 30 OVER ± ---  |           |           | CHECKED BY<br>T. ITO           | DATE<br>'00/12/06 | MOLEX INCORPORATED   |                        |                     |                        |              |               |  |  |  |  |  |  |  |  |  |  |
|         |                   |            |            |            |              |            |             | ANGULAR ± --- °  |           |           | APPROVED BY<br>M. FUKUSHIMA    | DATE<br>'00/12/06 | DOCUMENT NO.<br>SD-54167-002   |                        | SHEET NO.<br>6 OF 6 |                        |              |               |  |  |  |  |  |  |  |  |  |  |
|         |                   |            |            |            |              |            |             | DRAFT WHERE APPLICABLE<br>MUST REMAIN<br>WITHIN DIMENSIONS |           |           | MATERIAL NO.<br>SEE CHART      |                   | THIS DRAWING CONTAINS INFORMATION THAT IS PROPRIETARY TO MOLEX<br>INCORPORATED AND SHOULD NOT BE USED WITHOUT WRITTEN PERMISSION |                        |                     |                        |              |               |  |  |  |  |  |  |  |  |  |  |
|         |                   |            |            |            |              |            |             |  |           |           | SIZE<br>A3                     |                   |  |                        |                     |                        |              |               |  |  |  |  |  |  |  |  |  |  |

9

8

7

6

5

4

3

2