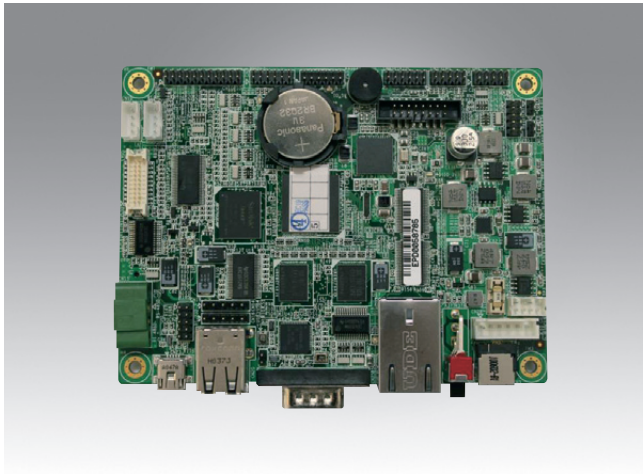


PCM-C3503/C3530

SBC with TI OMAP35 Series Processor



Features

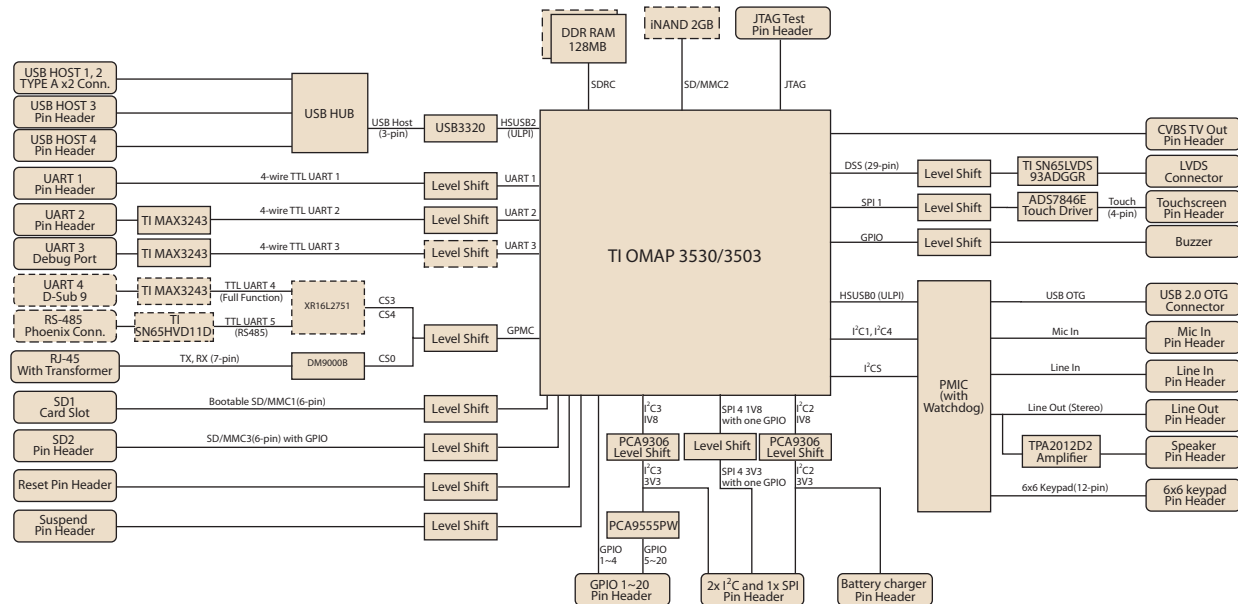
- TI OMAP35 series @ 600 MHz high performance/application processor (Cortex™-A8 based)
- Supports OpenGL ES 1.1 & 2.0, OpenVG 1.0 and Direct3D (PCM-C3530 only)
- Video supports D1 resolution directly and up to 720P (PCM-C3530 only)
- Built-in 430 MHz TMS320C64x+™ DSP Core (PCM-C3530 only)
- Power DC input 10 ~ 24 V±5%; Power Consumption: Standard 2W (max. 3W)
- Extended temperature available as optional models
- Compact size for system integration easily
- Supports Embedded Linux2.6, and Win CE 6.0



Specifications

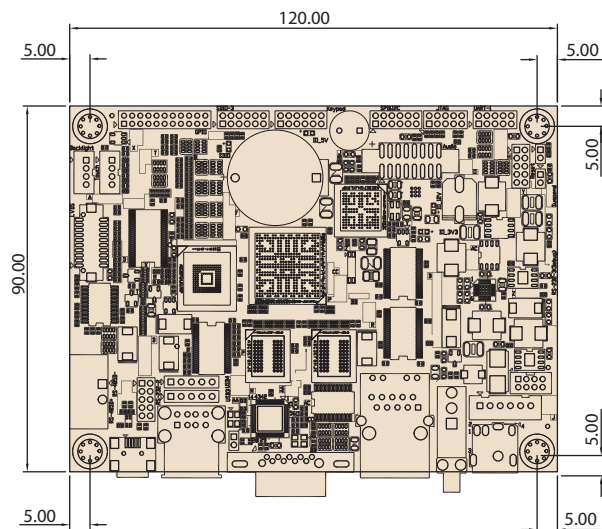
Kernel	M/B	PCM-C3503 (by component change)	PCM-C3530
	CPU	TI-OMAP 3503 Cortex-A8 600 MHz	TI-OMAP 3530 Cortex-A8 600 MHz
	Multi-Media Support	-	Built-in 430 MHz TMS320C64x+™ DSP Core support
	2D/3D Accelerators	-	Support OpenGL ES 1.1 & 2.0, OpenVG 1.0 and Direct3D
	System RAM	128 MB Mobile DDR	256 MB Mobile DDR
	Image/AP Flash	- (boot from SD Card)	2 GB
	Graphics Chip	CPU internal 24-bit LCD controller	
	RTC	Yes	
	Watchdog Timer	Yes	
	Power Management	Standard / Idle / Suspend mode	
Reset	H/W & S/W reset		
I/O	COM	RS-232 x2 (pin header) TTL x1 (pin header)	RS-232 x3 (1x DB-9 , 2x pin header) RS-485 x1 (box header), TTL x1 (pin header)
	Ethernet LAN	10/100 Mbps (RJ-45)	
	USB Host	USB 2.0 x4 (Type A x2, pin header x2)	
	USB OTG	USB HS OTG x1 (OTG connector)	
	SD/MMC	2 (SD slot x1+ pin header x1)	
	SATA	-	
	Touch	4-wire resistive type interface by ADS7846	
	Keypad	6 x 6 matrix keypad (pin header)	
	I ² C Interface	2 (pin header)	
	I ² S Interface	-	
	CANBus	-	
	SPI Interface	1 (pin header)	
	HDMI	-	
	VGA	-	
Mini PCIe Connector	-		
System Bus	-		
GPIO	20-pin 3.3V TTL level GPIOs (pin header)		
Multimedia	Graphics Chip	CPU internal 24-bit LCD controller	
	Resolution	Default 800x480	
	LCD Interface	24-bit LVDS LCD connector	
	Brightness/Backlight Control	Yes	
	Audio	MIC-in, Line-in, Line-out, Speaker-out (pin header)	
Power	DC-input	10 V ~ 24 V _{DC} (±5%)	
	Power Consumption	Normal Run	Standard 2W
Full Run		3 Watts	
Mechanical & Environmental	Size	90 x 120 x 17 mm	
	Weight	92g	
	PCB Thickness	1.6 mm, 8 layers	
	Operating Temperature	0 ~ 60° C (-20 ~ 70° C, -40 ~ 85° C with a component change)	
	Operating Humidity	5 ~ 95 % relative humidity, non-condensing	
	RoHS	Yes	
Other	Certifications	CE , FCC	
	Wireless (optional)	Thru SDIO /USB interface	
	Software Support	Embedded Linux2.6, and Win CE6.0	

Block Diagram



Dimensions

Unit: mm



Ordering Information

PCM-C3530DK-B00E Design-in Package

Part No.	Description
PCM-C3530DK-B00E	Evaluation kit for TI OMAP3530 w/Win CE 6.0 256 MB DDR SDRAM, 2 GB flash
Power cord	1700001524 for 3-pin USA standard power cord 170203183C for 3-pin Europe standard power cord 170203180A for 3-pin UK standard power cord

PCM-C3503/C3530 SBC (Single board only)

Part No.	Description
PCM-C3503-650B0E	TI OMAP3503, 128 MB DDR SDRAM, none flash Win CE 6.0 Pro RoHS
PCM-C3503-650BAE	TI OMAP3503, 128 MB DDR SDRAM, none flash RoHS
PCM-C3530-668B0E	TI OMAP3530, 256 MB DDR SDRAM, 2 GB flash Win CE 6.0 Pro RoHS
PCM-C3530-668BAE	TI OMAP3530, 256 MB DDR SDRAM, 2 GB flash RoHS

Packing List

SBC comes with the bootloader pre-installed and Win CE professional license sticker

**Sample image and related documentation including with Design-in kit only.