

PLEASE CHECK WWW.MOLEX.COM FOR LATEST PART INFORMATION

Part Number: [0472220002](#)
Status: **Active**
Overview: serial ata 127 host receptacles
Description: 1.27mm (.050") Pitch Serial ATA Bay Receptacle, Right Angle, SMT, Mid-mount, 0.10µm (4µ") Gold (Au) Plating, with Screw Holes and Pegs, Connector height 4.50mm (.177"), Tray Packaging, 22 Circuits, Lead Free

Documents:

[3D Model](#) [Product Specification PS-67492-001 \(PDF\)](#)
[Drawing \(PDF\)](#) [RoHS Certificate of Compliance \(PDF\)](#)

Agency Certification

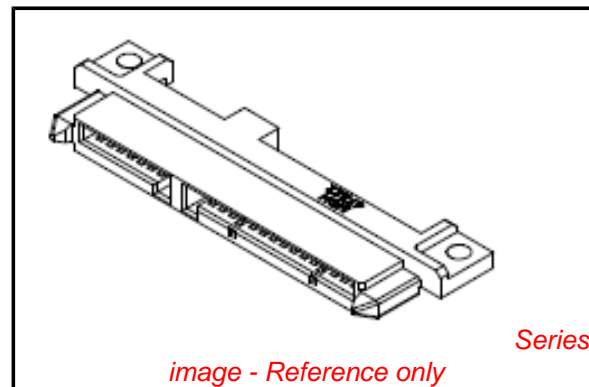
CSA LR 19980
 UL E29179

General

Product Family PCB Receptacles
 Series [47222](#)
 Application Board-to-Board
 Overview [serial ata 127 host receptacles](#)
 Product Name Serial ATA

Physical

Circuits (Loaded) 22
 Circuits (maximum) 22
 Color - Resin Black
 Durability (mating cycles max) 500
 Flammability 94V-0
 Glow-Wire Compliant No
 Guide to Mating Part Yes
 Keying to Mating Part Yes
 Lock to Mating Part None
 Material - Metal Copper Alloy
 Material - Plating Mating Gold
 Material - Plating Termination Tin
 Material - Resin Thermoplastic Elastomer
 Number of Rows 1
 Orientation Right Angle
 PCB Locator Yes
 PCB Retention Yes
 PCB Thickness Recommended (in) 0.039 In
 PCB Thickness Recommended (mm) 1.00 mm
 Packaging Type Tray
 Pitch - Mating Interface (in) 0.050 In
 Pitch - Mating Interface (mm) 1.27 mm
 Pitch - Term. Interface (in) 0.050 In
 Pitch - Term. Interface (mm) 1.27 mm
 Plating min: Mating (µin) 4
 Plating min: Mating (µm) 0.1
 Plating min: Termination (µin) 40
 Plating min: Termination (µm) 1
 Polarized to Mating Part Yes
 Polarized to PCB Yes
 Stackable No
 Temperature Range - Operating -35°C to +85°C
 Termination Interface: Style Surface Mount



EU RoHS

ELV and RoHS Compliant
REACH SVHC Contains SVHC: No
Halogen-Free Status

China RoHS



Need more information on product environmental compliance?

Email productcompliance@molex.com
 For a multiple part number RoHS Certificate of Compliance, [click here](#)

Please visit the [Contact Us](#) section for any non-product compliance questions.

Search Parts in this Series

[47222Series](#)

Electrical

Current - Maximum per Contact	1.5A
Voltage - Maximum	15V DC

Solder Process Data

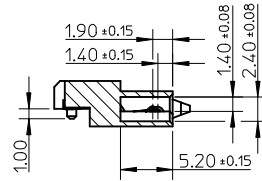
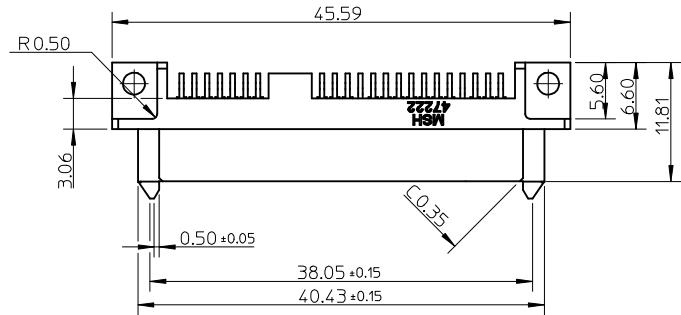
Duration at Max. Process Temperature (seconds)	3
Lead-free Process Capability	Reflow Capable (SMT only)
Max. Cycles at Max. Process Temperature	1
Process Temperature max. C	255

Material Info**Reference - Drawing Numbers**

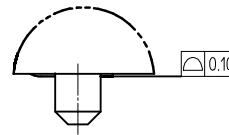
Packaging Specification	PK-47222-001
Product Specification	PS-67492-001
Sales Drawing	SD-47222-002

This document was generated on 05/26/2010

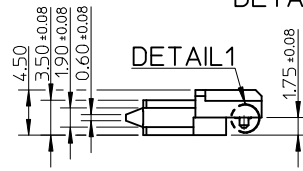
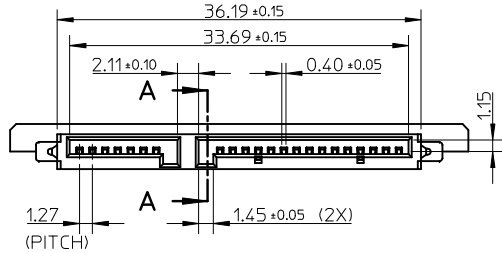
PLEASE CHECK WWW.MOLEX.COM FOR LATEST PART INFORMATION



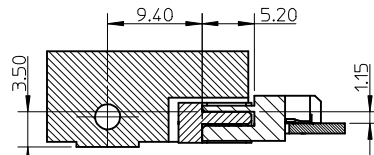
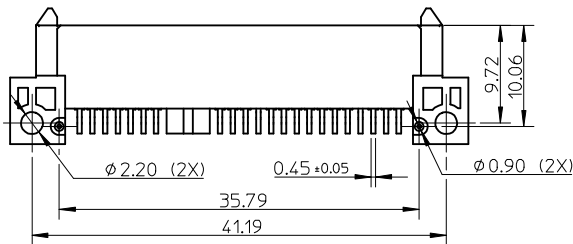
SECTION A-A



DETAIL 1



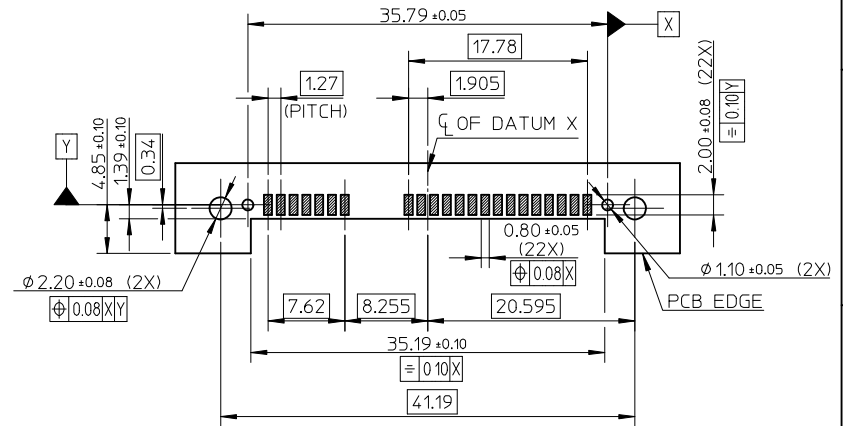
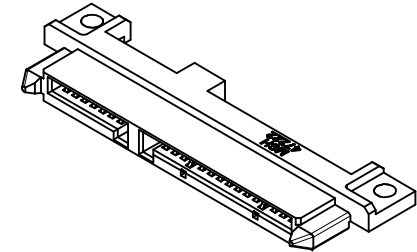
DETAIL 1



SECTION B-B

NOTES:

- MATERIAL:
HOUSING: TERMAL PLASTIC, 30% G.F., BLACK, UL94V-0.
TERMINAL: COPPER ALLOY.
- TERMINAL PLATING:
CONTACT AREA: GOLD PLATING, 0.1 MICROMETER MIN.
SOLDER AREA: TIN PLATING, 1.0 MICROMETER MIN.
UNDERPLATING: NICKEL PLATING, 1.5 MICROMETER MIN.
- PRODUCT SPECIFICATION: PS-67492-001.
- PACKAGE SPECIFICATION: PK-47222-001.
- PRODUCT COMPLIANT TO RoSH DIRECTIVE 2002/95/EC AND ELV DIRECTIVE 2000/53/EC.



RECOMMEND PCB LAYOUT(THICKNESS:1.00mm)

<p>NEW RELEASE EC NO: SH2009-0607 DRWN:XQZHANG 2009/03/25 CHKD:XJSONG 2009/04/01 APPR:HWANG 2009/04/17</p>	<p>QUALITY SYMBOLS ▽=0 ∇=0</p>	<p>GENERAL TOLERANCES (UNLESS SPECIFIED)</p>		<p>DIMENSION STYLE MM ONLY</p>		<p>SCALE 1:1</p>	<p>DESIGN UNITS METRIC</p>	<p>THIRD ANGLE PROJECTION</p>															
		<table border="1"> <tr><th>mm</th><th>INCH</th></tr> <tr><td>4 PLACES ± ---</td><td>± ---</td></tr> <tr><td>3 PLACES ± ---</td><td>± ---</td></tr> <tr><td>2 PLACES ± 0.25</td><td>± ---</td></tr> <tr><td>1 PLACE ± 0.25</td><td>± ---</td></tr> </table>	mm	INCH	4 PLACES ± ---	± ---	3 PLACES ± ---	± ---	2 PLACES ± 0.25	± ---	1 PLACE ± 0.25	± ---	<table border="1"> <tr><th>mm</th><th>INCH</th></tr> <tr><td>ANGULAR ± 3 °</td><td></td></tr> </table>	mm	INCH	ANGULAR ± 3 °		<p>DRAWN BY XQZHANG</p> <p>CHECKED BY XJSONG</p> <p>APPROVED BY HWANG</p>	<p>DATE 2008/11/27</p> <p>DATE 2008/11/27</p> <p>DATE 2008/11/27</p>	<p>TITLE SATA HDD BAY CONNECTOR SMT TYPE</p>			
		mm	INCH																				
		4 PLACES ± ---	± ---																				
3 PLACES ± ---	± ---																						
2 PLACES ± 0.25	± ---																						
1 PLACE ± 0.25	± ---																						
mm	INCH																						
ANGULAR ± 3 °																							
<p>DRAFT WHERE APPLICABLE MUST REMAIN WITHIN DIMENSIONS</p>				<p>MATERIAL NO. 47222-0002</p>	<p>MOLEX INCORPORATED</p>			<p>SHEET NO. 1 OF 1</p>															
				<p>SIZE A3</p>	<p>THIS DRAWING CONTAINS INFORMATION THAT IS PROPRIETARY TO MOLEX INCORPORATED AND SHOULD NOT BE USED WITHOUT WRITTEN PERMISSION</p>																		