

Rad-hard 550 MHz low noise operational amplifier

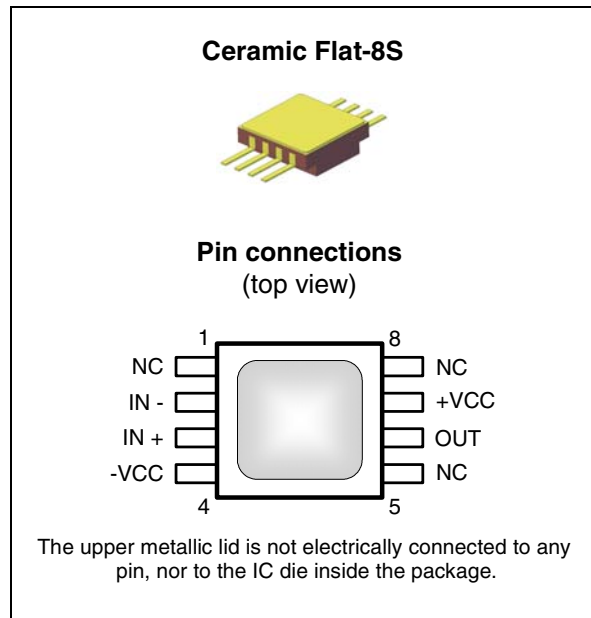
Datasheet – production data

Features

- Bandwidth: 550 MHz (unity gain)
- Quiescent current: 4 mA
- Slew rate: 940 V/μs
- Input noise: 1.5 nV/√Hz
- Distortion: SFDR = -66 dBc (10 MHz, 1V_{pp})
- 2.8 V_{pp} minimum output swing on 100 Ω load for a +5 V supply
- 5 V power supply
- 300 krad MIL-STD-883 1019 ELDRS free compliant
- SEL immune at 125 °C, LET up to 110 MEV.cm²/mg
- SET characterized, LET up to 110 MEV.cm²/mg
- QMLV qualified
- Available in ceramic Flat-8S package

Applications

- Communication satellites
- Space data acquisition systems
- Aerospace instrumentation
- Nuclear and high energy physics
- Harsh radiation environments
- ADC drivers



Description

The RHF350 device is a current feedback operational amplifier that uses very high speed complementary technology to provide a bandwidth of up to 550 MHz while drawing only 4 mA of quiescent current. With a slew rate of 940 V/μs and an output stage optimized for driving a standard 100 Ω load, this circuit is highly suitable for applications where speed and power-saving are the main requirements. The device is a single operator available in a Flat-8 hermetic ceramic package, saving board space as well as providing excellent thermal and dynamic performance.

Table 1. Device summary⁽¹⁾

| Reference | SMD | Quality level | Package | Lead finish | Mass | EPPL | Temperature range |
|-------------|-----------------|-------------------|---------|-------------|--------|------|-------------------|
| RHF350K1 | - | Engineering model | Flat-8S | Gold | 0.45 g | - | -55 °C to +125 °C |
| RHF350K-01V | 5962F0723201VXC | QML-V model | | | | | |

1. Contact ST sales for information about the specific conditions for products in QML-Q versions.

Contents

| | | |
|-----------|----------------------------------------------------------|-----------|
| 1 | Absolute maximum ratings and operating conditions | 3 |
| 2 | Electrical characteristics | 4 |
| 3 | Power supply considerations | 10 |
| | Single power supply | 10 |
| 4 | Noise measurements | 12 |
| 4.1 | Measurement of the input voltage noise e_N | 13 |
| 4.2 | Measurement of the negative input current noise i_{Nn} | 13 |
| 4.3 | Measurement of the positive input current noise i_{Np} | 13 |
| 5 | Intermodulation distortion product | 14 |
| 6 | Inverting amplifier biasing | 15 |
| 7 | Active filtering | 16 |
| 8 | Package information | 17 |
| | Ceramic Flat-8S package information. | 18 |
| 9 | Ordering information | 19 |
| 10 | Revision history | 20 |

1 Absolute maximum ratings and operating conditions

Table 2. Absolute maximum ratings

| Symbol | Parameter | Value | Unit |
|------------|--------------------------------------------------------------------------------------------------------|-------------|------|
| V_{CC} | Supply voltage ⁽¹⁾ | 6 | V |
| V_{id} | Differential input voltage ⁽²⁾ | +/-0.5 | V |
| V_{in} | Input voltage range ⁽³⁾ | +/-2.5 | V |
| T_{stg} | Storage temperature | -65 to +150 | °C |
| T_j | Maximum junction temperature | 150 | °C |
| R_{thja} | Flat-8 thermal resistance junction to ambient | 50 | °C/W |
| R_{thjc} | Flat-8 thermal resistance junction to case | 30 | °C/W |
| P_{max} | Flat-8 maximum power dissipation ⁽⁴⁾ ($T_{amb} = 25\text{ °C}$) for $T_j = 150\text{ °C}$ | 830 | mW |
| ESD | HBM: human body model ⁽⁵⁾ pins 1, 4, 5, 6, 7 and 8 pins 2 and 3 | 2 0.5 | kV |
| | MM: machine model ⁽⁶⁾ pins 1, 4, 5, 6, 7 and 8 pins 2 and 3 | 200 60 | V |
| | CDM: charged device model ⁽⁷⁾ pins 1, 4, 5, 6, 7 and 8 pins 2 and 3 | 1.5 1.5 | kV |
| | Latch-up immunity | 200 | mA |

- All voltages values are measured with respect to the ground pin.
- Differential voltage are non-inverting input terminal with respect to the inverting input terminal.
- The magnitude of input and output voltage must never exceed $V_{CC} + 0.3\text{ V}$.
- Short-circuits can cause excessive heating. Destructive dissipation can result from short-circuits on all amplifiers.
- Human body model: a 100 pF capacitor is charged to the specified voltage, then discharged through a 1.5 kΩ resistor between two pins of the device. This is done for all couples of connected pin combinations while the other pins are floating.
- This is a minimum value.
Machine model: a 200 pF capacitor is charged to the specified voltage, then discharged directly between two pins of the device with no external series resistor (internal resistor < 5 Ω). This is done for all couples of connected pin combinations while the other pins are floating.
- Charged device model: all pins and package are charged together to the specified voltage and then discharged directly to ground through only one pin.

Table 3. Recommended operating conditions

| Symbol | Parameter | Value | Unit |
|-----------|---------------------------|---------------------------------------------------------|------|
| V_{CC} | Supply voltage | 4.5 to 5.5 | V |
| V_{icm} | Common mode input voltage | $-V_{CC} + 1.5\text{ V}$ to $+V_{CC} - 1.5\text{ V}$ | V |
| T_A | Ambient temperature range | -55 to +125 | °C |

2 Electrical characteristics

Note: All electrical parameters apply both pre and post irradiation. Post irradiation data are guaranteed by qualification, they are not tested in production.

Table 4. Radiations

| | | Value | Unit |
|------------|-----------------------------------------------------------|-------|-------------------------|
| TID | High dose rate (50 - 300 rad / sec.) up to | 300 | krad |
| Heavy-ions | SEL immunity (at 125 °C) up to SEU characterized up to | 110 | MeV.cm ² /mg |

Table 5. Electrical characteristics for V_{CC} = ±2.5 V, (unless otherwise specified)

| Symbol | Parameter | Test conditions | Temp. ⁽¹⁾ | Min. | Typ. | Max. | Unit |
|-----------------------|--------------------------------------------------------------------------------|--------------------------------------------------|----------------------|------|------|------|------|
| DC performance | | | | | | | |
| V _{io} | Input offset voltage | | +125 °C | -4 | 1 | 4 | mV |
| | | | +25 °C | -4 | 0.4 | 4 | |
| | | | -55 °C | -4 | 0.8 | 4 | |
| I _{ib+} | Non-inverting input bias current | | +125 °C | | 8.5 | 35 | μA |
| | | | +25 °C | | 9 | 35 | |
| | | | -55 °C | | 9 | 35 | |
| I _{ib-} | Inverting input bias current | | +125 °C | | 2.5 | 25 | μA |
| | | | +25 °C | | 2 | 20 | |
| | | | -55 °C | | 1.8 | 25 | |
| CMR | Common mode rejection ratio 20 log (ΔV _{ic} /ΔV _{io}) | ΔV _{ic} = ±1 V | +125 °C | 50 | 55 | | dB |
| | | | +25 °C | 54 | 57 | | |
| | | | -55 °C | 50 | 58 | | |
| SVR | Supply voltage rejection ratio 20 log (ΔV _{CC} /ΔV _{io}) | ΔV _{CC} = 3.5 V to 5 V | +125 °C | 55 | 87 | | dB |
| | | | +25 °C | 68 | 87 | | |
| | | | -55 °C | 55 | 88 | | |
| PSRR | Power supply rejection ratio 20 log (ΔV _{CC} /ΔV _{out}) | ΔV _{CC} = 200 mV _{pp} at 1 kHz | +25 °C | | 51 | | dB |
| I _{CC} | Supply current | No load | +125 °C | | 3.8 | 4.9 | mA |
| | | | +25 °C | | 4 | 4.9 | |
| | | | -55 °C | | 4 | 4.9 | |

Table 5. Electrical characteristics for $V_{CC} = \pm 2.5$ V, (unless otherwise specified) (continued)

| Symbol | Parameter | Test conditions | Temp. ⁽¹⁾ | Min. | Typ. | Max. | Unit | |
|-------------------------------------------------------|------------------------------|-----------------------------------------------------------|----------------------------------|---------|-------|-------|------------|--|
| Dynamic performance and output characteristics | | | | | | | | |
| R_{OL} | Transimpedance | $\Delta V_{out} = \pm 1$ V, $R_L = 100 \Omega$ | +125 °C | 150 | 244 | | k Ω | |
| | | | +25 °C | 170 | 260 | | | |
| | | | -55 °C | 150 | 276 | | | |
| Bw | Small signal -3 dB bandwidth | $R_L = 100 \Omega$, $A_V = +1$ | +25 °C | | 550 | | MHz | |
| | | | $R_L = 100 \Omega$, $A_V = +2$ | +25 °C | | 390 | | |
| | | | $R_L = 100 \Omega$, $A_V = +10$ | +25 °C | | 125 | | |
| | | | $R_L = 100 \Omega$, $A_V = -2$ | +125 °C | 250 | 380 | | |
| | | | | +25 °C | 250 | 425 | | |
| | | | | -55 °C | 250 | 466 | | |
| SR | Slew rate ⁽²⁾ | $V_{out} = 2 V_{pp}$, $A_V = +2$, $R_L = 100 \Omega$ | +25 °C | 700 | 940 | | V/ μ s | |
| V_{OH} | High level output voltage | $R_L = 100 \Omega$ | +125 °C | 1.3 | 1.6 | | V | |
| | | | +25 °C | 1.44 | 1.55 | | | |
| | | | -55 °C | 1.3 | 1.5 | | | |
| V_{OL} | High level output voltage | $R_L = 100 \Omega$ | +125 °C | | -1.6 | -1.3 | V | |
| | | | +25 °C | | -1.55 | -1.44 | | |
| | | | -55 °C | | -1.5 | -1.3 | | |
| I_{sink} | Output sink current | Output to GND | +125 °C | 135 | 210 | | mA | |
| | | | +25 °C | 135 | 225 | | | |
| | | | -55 °C | 135 | 225 | | | |
| I_{source} | Output source current | Output to GND | +125 °C | | -200 | -140 | mA | |
| | | | +25 °C | | -225 | -140 | | |
| | | | -55 °C | | -240 | -140 | | |

1. $T_{min} < T_{amb} < T_{max}$: worst case of the parameter on a standard sample across the temperature range. The evaluation is done on 50 units in the SO-8 plastic package.

2. Not physically tested. Guaranteed by design, measured on bench.

Table 6. Closed-loop gain and feedback components

| Gain (V/V) | + 1 | - 1 | + 2 | - 2 | + 10 | - 10 |
|-----------------------|-----|-----|-----|-----|------|------|
| R_{fb} (Ω) | 820 | 300 | 300 | 300 | 300 | 300 |

Figure 1. Frequency response, positive gain Figure 2. Flatness, gain = +1

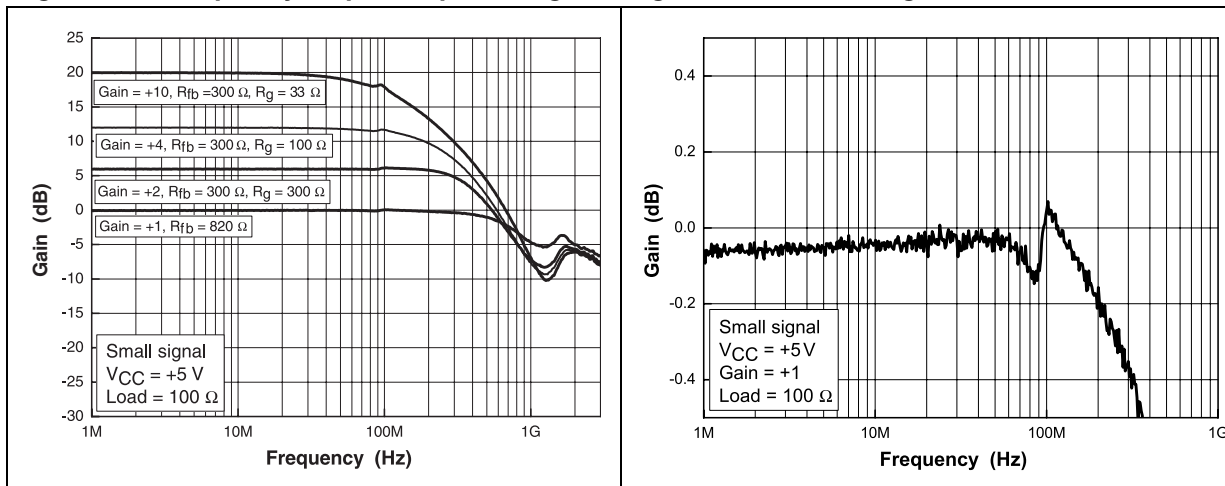


Figure 3. Flatness, gain = +2 Figure 4. Flatness, gain = +4

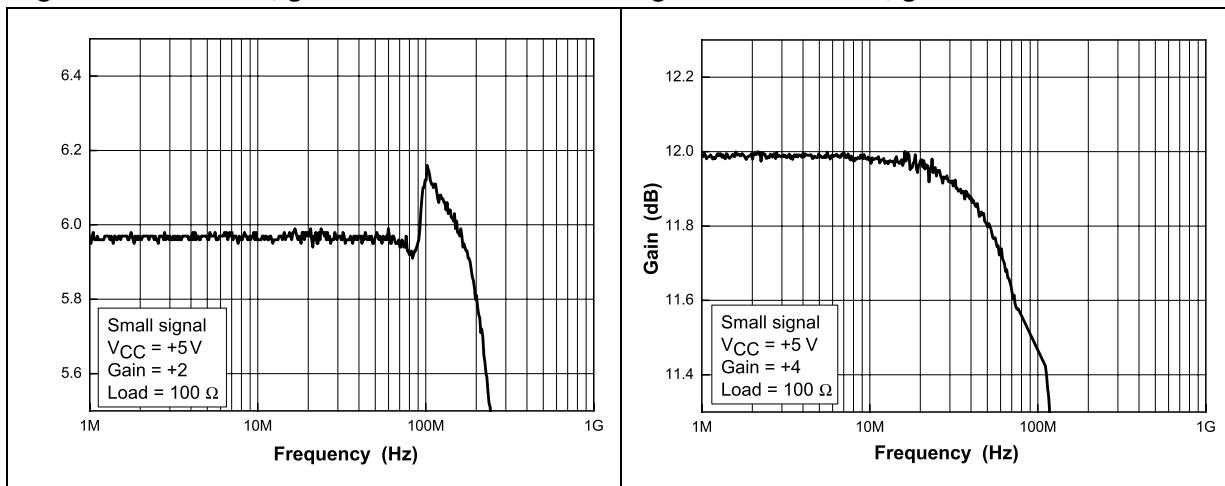


Figure 5. Flatness, gain = +10 Figure 6. Slew rate

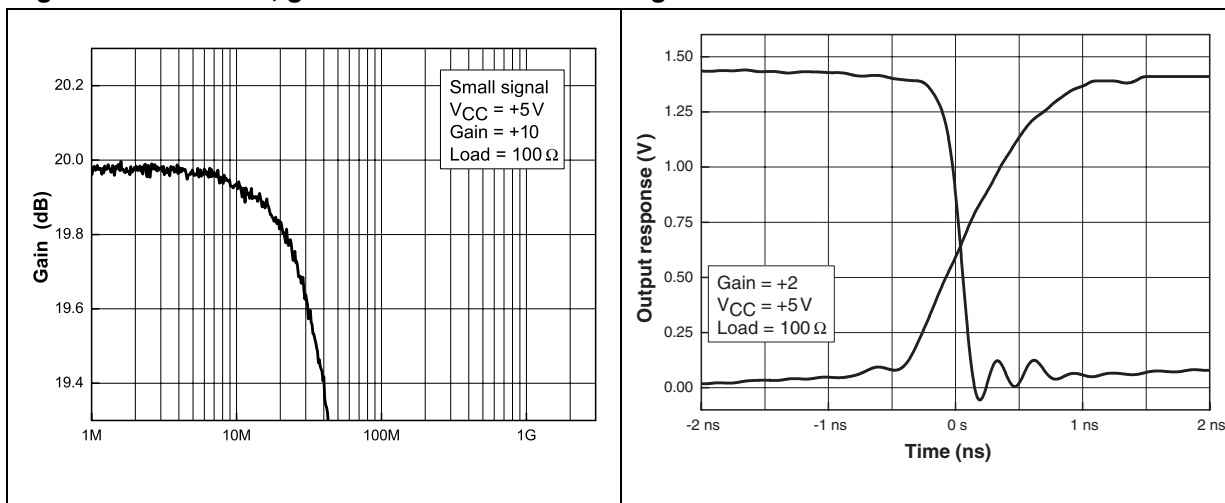


Figure 7. I_{sink}

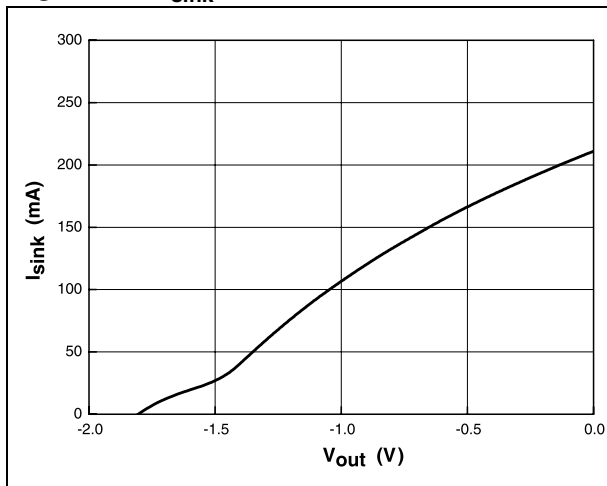


Figure 8. I_{source}

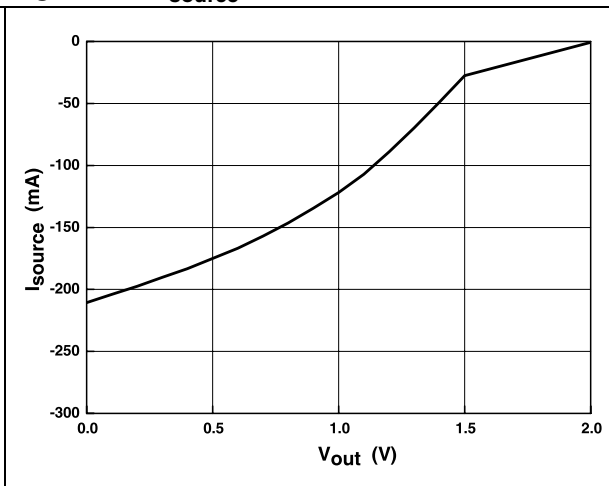


Figure 9. Input current noise vs. frequency

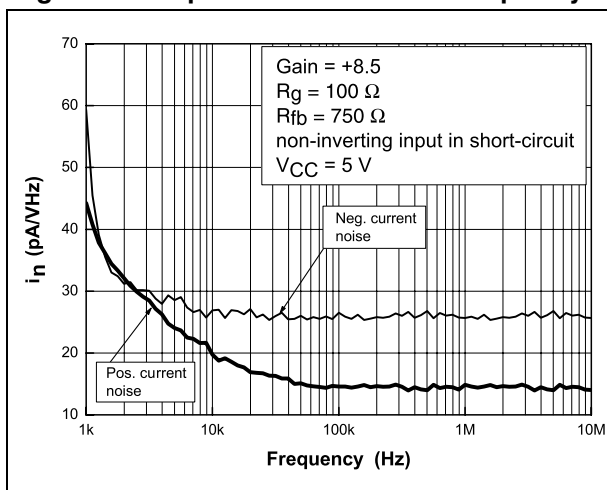


Figure 10. Input voltage noise vs. frequency

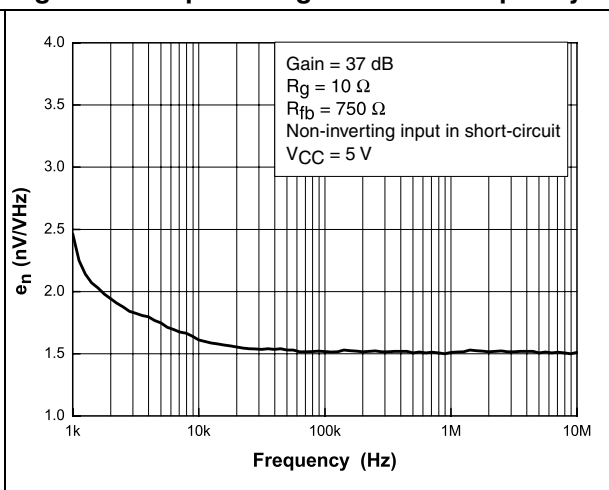


Figure 11. Quiescent current vs. V_{CC}

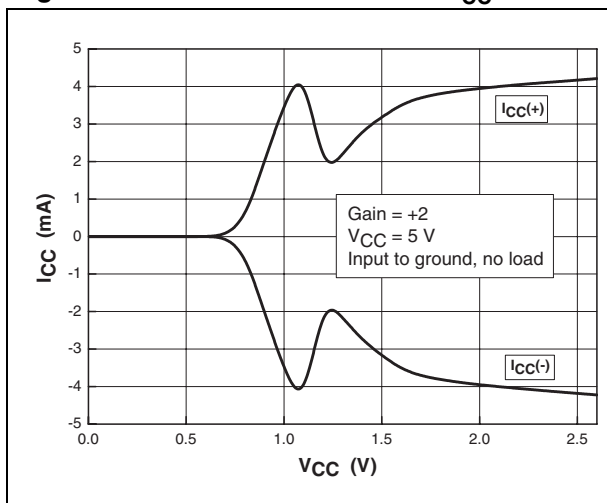


Figure 12. Noise

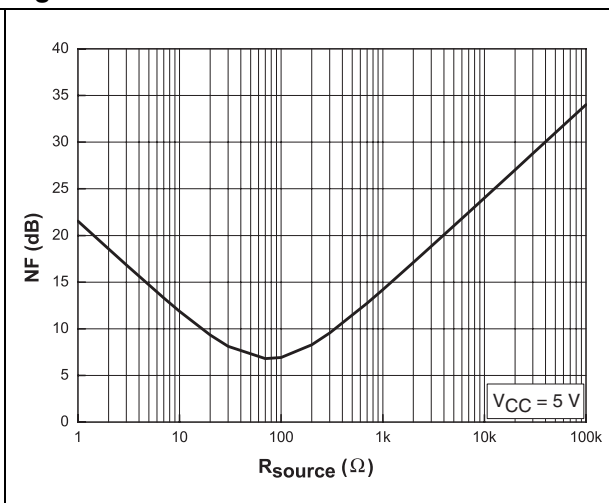


Figure 13. Distortion vs. output amplitude

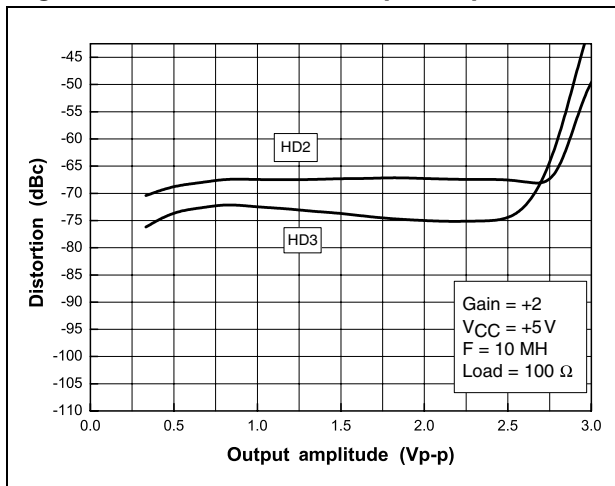


Figure 14. Output amplitude vs. load

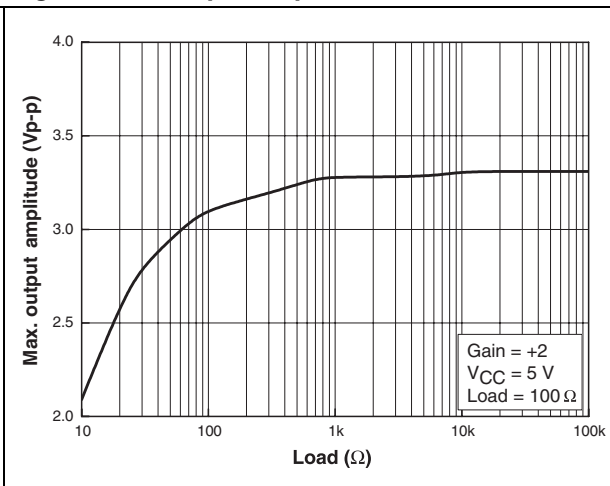


Figure 15. Reverse isolation vs. frequency

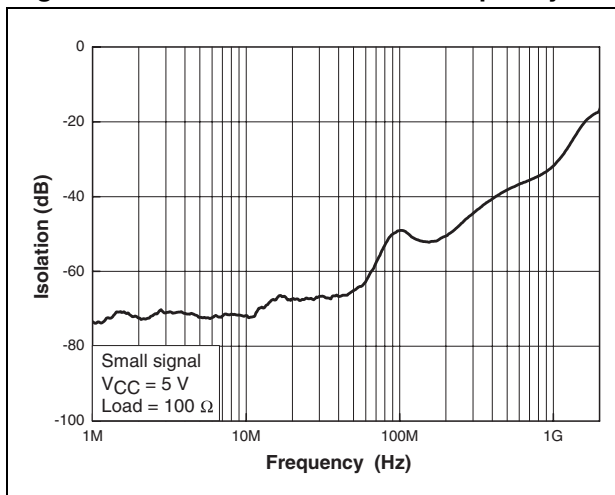


Figure 16. SVR vs. temperature

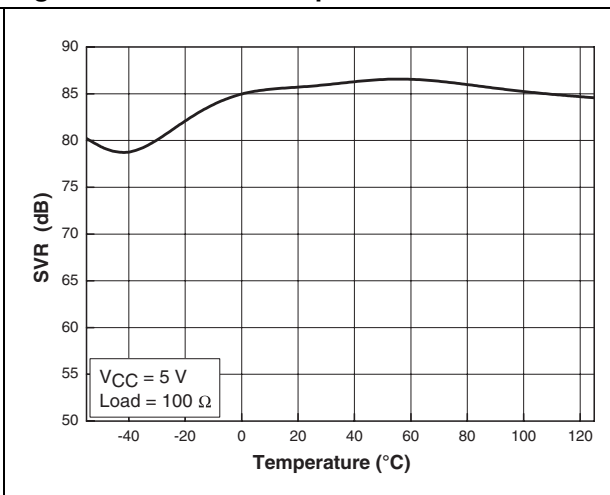


Figure 17. I_{out} vs. temperature

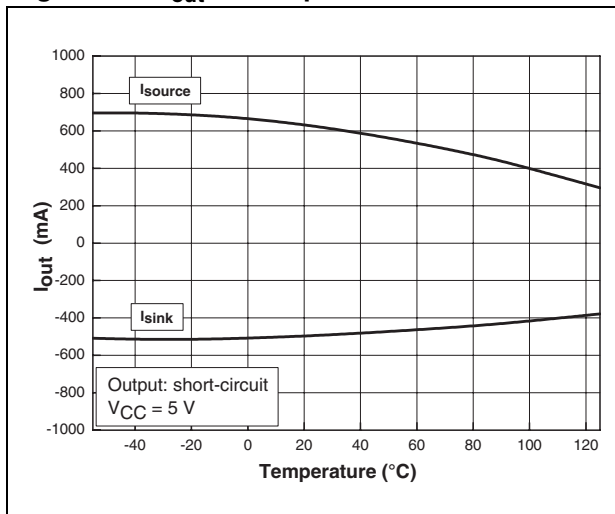


Figure 18. R_{OL} vs. temperature

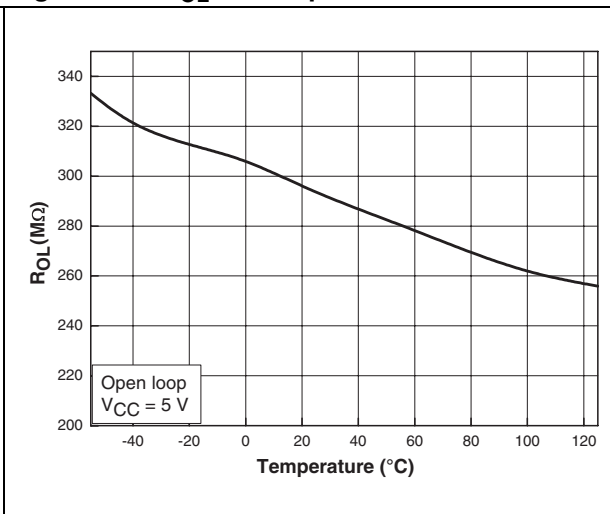


Figure 19. CMR vs. temperature

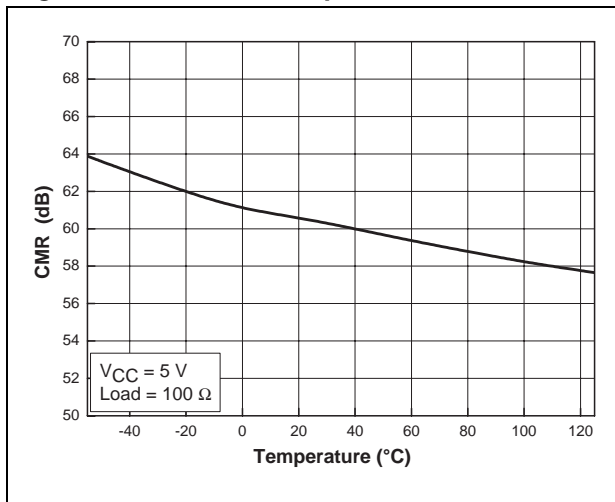


Figure 20. I_{bias} vs. temperature

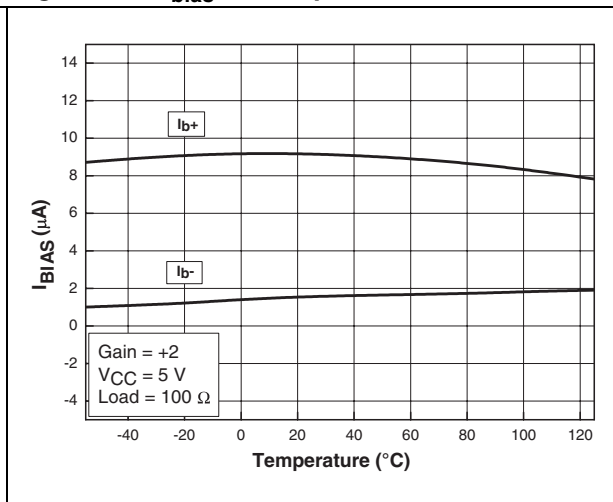


Figure 21. V_{io} vs. temperature

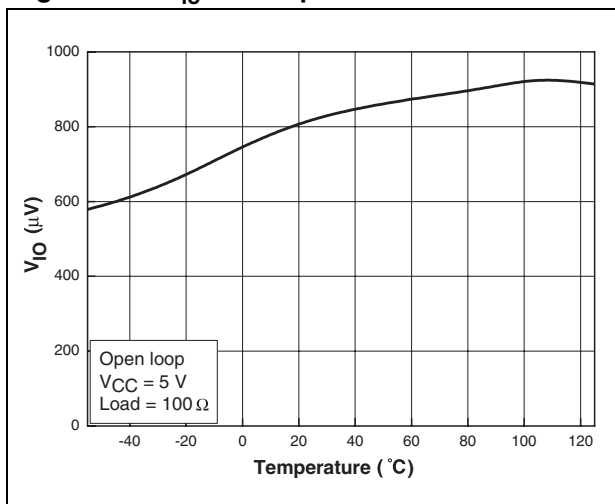


Figure 22. V_{OH} and V_{OL} vs. temperature

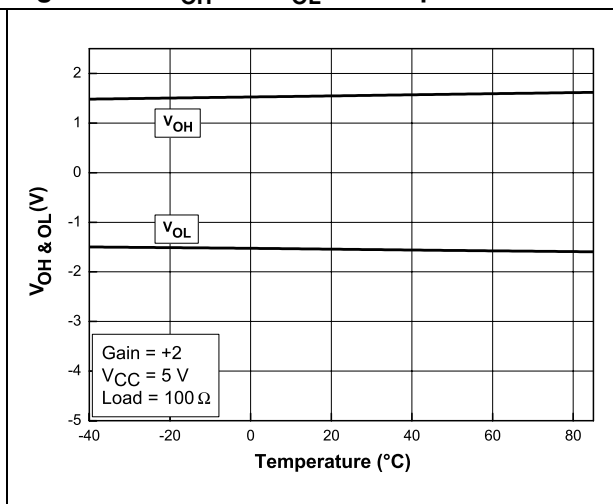
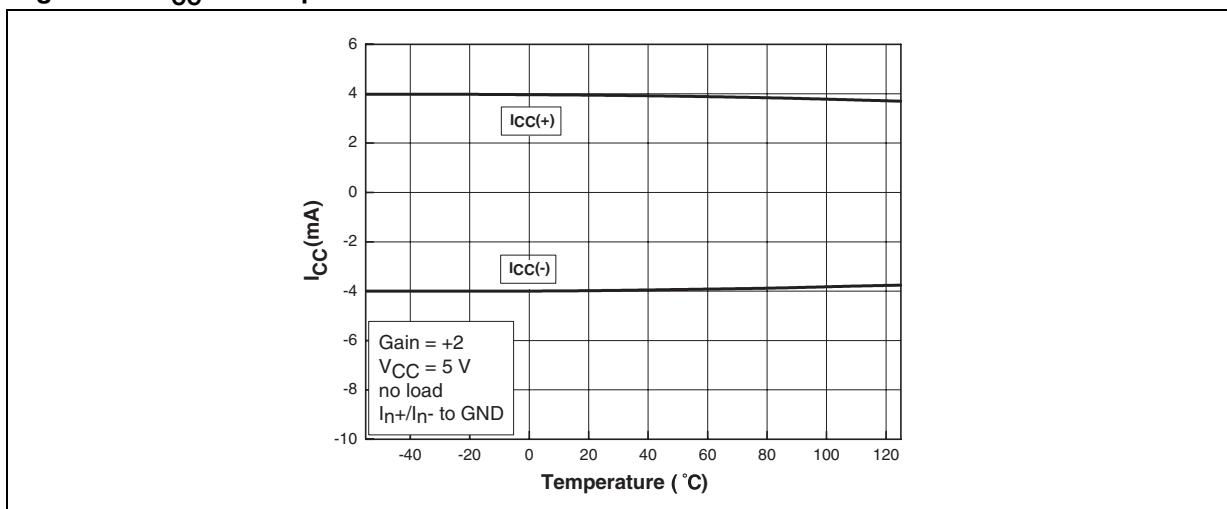


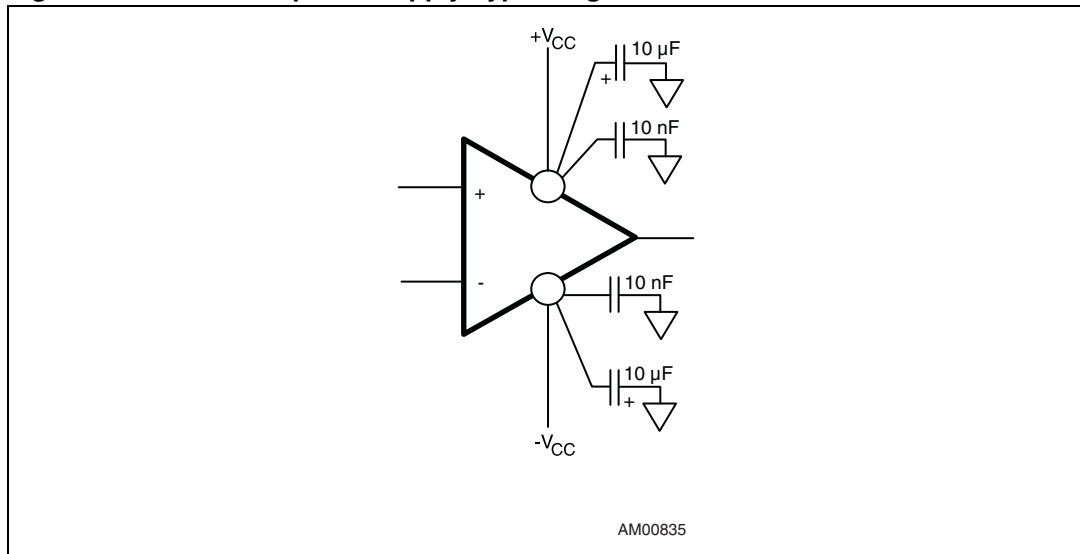
Figure 23. I_{CC} vs. temperature



3 Power supply considerations

Correct power supply bypassing is very important to optimize performance in high-frequency ranges. The bypass capacitors should be placed as close as possible to the IC pins to improve high-frequency bypassing. A capacitor greater than $1\ \mu\text{F}$ is necessary to minimize the distortion. For better quality bypassing, a $10\ \text{nF}$ capacitor can be added. It should also be placed as close as possible to the IC pins. The bypass capacitors must be incorporated for both the negative and positive supply.

Figure 24. Circuit for power supply bypassing



Single power supply

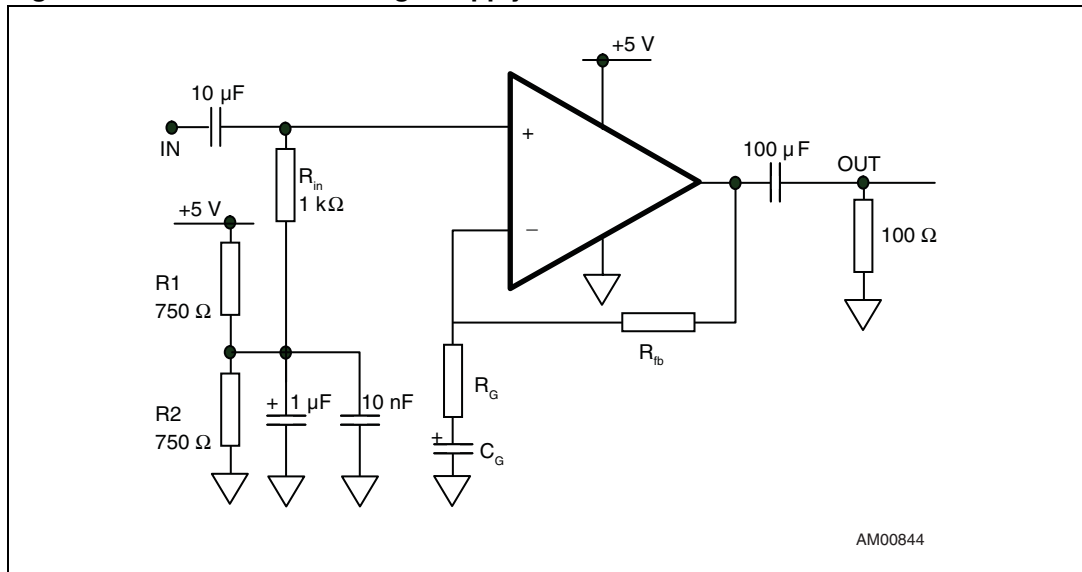
In the event that a single supply system is used, biasing is necessary to obtain a positive output dynamic range between the $0\ \text{V}$ and $+V_{CC}$ supply rails. Considering the values of V_{OH} and V_{OL} , the amplifier provides an output swing from $+0.9\ \text{V}$ to $+4.1\ \text{V}$ on a $100\ \Omega$ load.

The amplifier must be biased with a mid-supply (nominally $+V_{CC}/2$), in order to maintain the DC component of the signal at this value. Several options are possible to provide this bias supply, such as a virtual ground using an operational amplifier or a two-resistance divider (which is the cheapest solution). A high resistance value is required to limit the current consumption. On the other hand, the current must be high enough to bias the non-inverting input of the amplifier. If we consider this bias current ($35\ \mu\text{A}$ maximum) as 1% of the current through the resistance divider, to keep a stable mid-supply two resistances of $750\ \Omega$ can be used.

The input provides a high-pass filter with a break frequency below $10\ \text{Hz}$ which is necessary to remove the original $0\ \text{V}$ DC component of the input signal, and to set it at $+V_{CC}/2$.

Figure 25 on page 11 illustrates a $5\ \text{V}$ single power supply configuration. A capacitor C_G is added to the gain network to ensure a unity gain at low frequencies in order to keep the right DC component at the output. C_G contributes to a high-pass filter with R_{fb}/R_G and its value is calculated with regard to the cut-off frequency of this low-pass filter.

Figure 25. Circuit for +5 V single supply

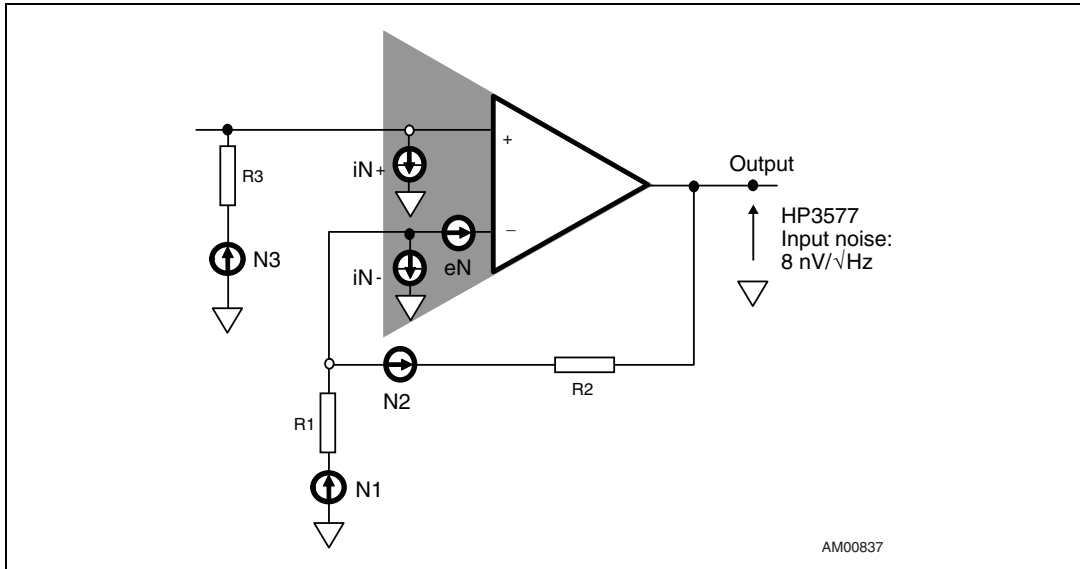


4 Noise measurements

The noise model is shown in [Figure 26](#).

- eN: input voltage noise of the amplifier.
- iNn: negative input current noise of the amplifier.
- iNp: positive input current noise of the amplifier.

Figure 26. Noise model



The thermal noise of a resistance R is:

Equation 1

$$\sqrt{4kTR\Delta F}$$

where ΔF is the specified bandwidth.

On a 1 Hz bandwidth the thermal noise is reduced to:

Equation 2

$$\sqrt{4kTR}$$

where k is the Boltzmann's constant, equal to $1,374.E(-23)J/^{\circ}K$. T is the temperature ($^{\circ}K$).

The output noise eNo is calculated using the superposition theorem. However, eNo is not the simple sum of all noise sources, but rather the square root of the sum of the square of each noise source, as shown in [Equation 3](#).

Equation 3

$$eNo = \sqrt{V1^2 + V2^2 + V3^2 + V4^2 + V5^2 + V6^2}$$

Equation 4

$$eNo^2 = eN^2 \times g^2 + iNn^2 \times R2^2 + iNp^2 \times R3^2 \times g^2 + \frac{R2^2}{R1} \times 4kTR1 + 4kTR2 + 1 + \frac{R2^2}{R1} \times 4kTR3$$

The input noise of the instrumentation must be extracted from the measured noise value. The real output noise value of the driver is:

Equation 5

$$eNo = \sqrt{(\text{Measured})^2 - (\text{instrumentation})^2}$$

The input noise is called **equivalent input noise** because it is not directly measured but is evaluated from the measurement of the output divided by the closed loop gain (eNo/g).

After simplification of the fourth and the fifth term of [Equation 4](#) we obtain:

Equation 6

$$eNo^2 = eN^2 \times g^2 + iNn^2 \times R2^2 + iNp^2 \times R3^2 \times g^2 + g \times 4kTR2 + 1 + \frac{R2^2}{R1} \times 4kTR3$$

4.1 Measurement of the input voltage noise eN

If we assume a short-circuit on the non-inverting input ($R3 = 0$), from [Equation 6](#) we can derive:

Equation 7

$$eNo = \sqrt{eN^2 \times g^2 + iNn^2 \times R2^2 + g \times 4kTR2}$$

In order to easily extract the value of eN , the resistance $R2$ will be chosen to be as low as possible. On the other hand, the gain must be large enough.

$$R3 = 0, \text{ gain: } g = 100$$

4.2 Measurement of the negative input current noise iNn

To measure the negative input current noise iNn , we set $R3 = 0$ and use [Equation 7](#). This time, the gain must be lower in order to decrease the thermal noise contribution.

$$R3 = 0, \text{ gain: } g = 10$$

4.3 Measurement of the positive input current noise iNp

To extract iNp from [Equation 5](#), a resistance $R3$ is connected to the non-inverting input. The value of $R3$ must be chosen in order to keep its thermal noise contribution as low as possible against the iNp contribution.

$$R3 = 100 \text{ W}, \text{ gain: } g = 10$$

5 Intermodulation distortion product

The non-ideal output of the amplifier can be described by the following series of equations.

Equation 8

$$V_{out} = C_0 + C_1 V_{in} + C_2 V_{in}^2 + \dots + C_n V_{in}^n$$

Where the input is $V_{in} = A \sin \omega t$, C_0 is the DC component, $C_1 (V_{in})$ is the fundamental and C_n is the amplitude of the harmonics of the output signal V_{out} .

A one-frequency (one-tone) input signal contributes to harmonic distortion. A two-tone input signal contributes to harmonic distortion and to the intermodulation product.

The study of the intermodulation and distortion for a two-tone input signal is the first step in characterizing the driving capability of multi-tone input signals.

In this case:

Equation 9

$$V_{in} = A \sin \omega_1 t + A \sin \omega_2 t$$

then:

Equation 10

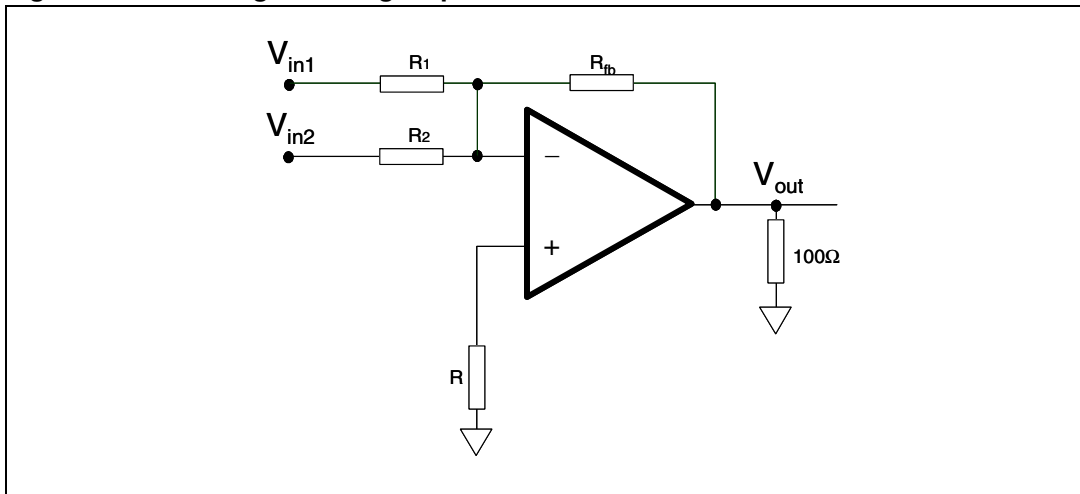
$$V_{out} = C_0 + C_1 (A \sin \omega_1 t + A \sin \omega_2 t) + C_2 (A \sin \omega_1 t + A \sin \omega_2 t)^2 + \dots + C_n (A \sin \omega_1 t + A \sin \omega_2 t)^n$$

From this expression, we can extract the distortion terms, and the intermodulation terms from a single sine wave.

- Second-order intermodulation terms IM2 by the frequencies $(\omega_1 - \omega_2)$ and $(\omega_1 + \omega_2)$ with an amplitude of $C_2 A^2$.
- Third-order intermodulation terms IM3 by the frequencies $(2\omega_1 - \omega_2)$, $(2\omega_1 + \omega_2)$, $(-\omega_1 + 2\omega_2)$ and $(\omega_1 + 2\omega_2)$ with an amplitude of $(3/4)C_3 A^3$.

The intermodulation product of the driver is measured by using the driver as a mixer in a summing amplifier configuration ([Figure 27](#)). In this way, the non-linearity problem of an external mixing device is avoided.

Figure 27. Inverting summing amplifier



6 Inverting amplifier biasing

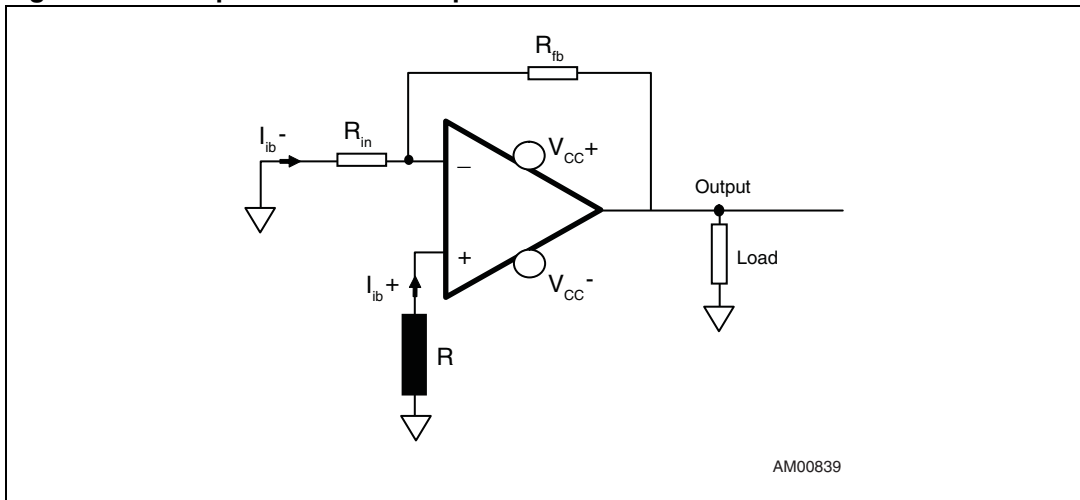
A resistance is necessary to achieve good input biasing, such as resistance R shown in [Figure 28](#).

The value of this resistance is calculated from the negative and positive input bias current. The aim is to compensate for the offset bias current, which can affect the input offset voltage and the output DC component. Assuming I_{ib-} , I_{ib+} , R_{in} , R_{fb} and a 0 V output, the resistance R is:

Equation 11

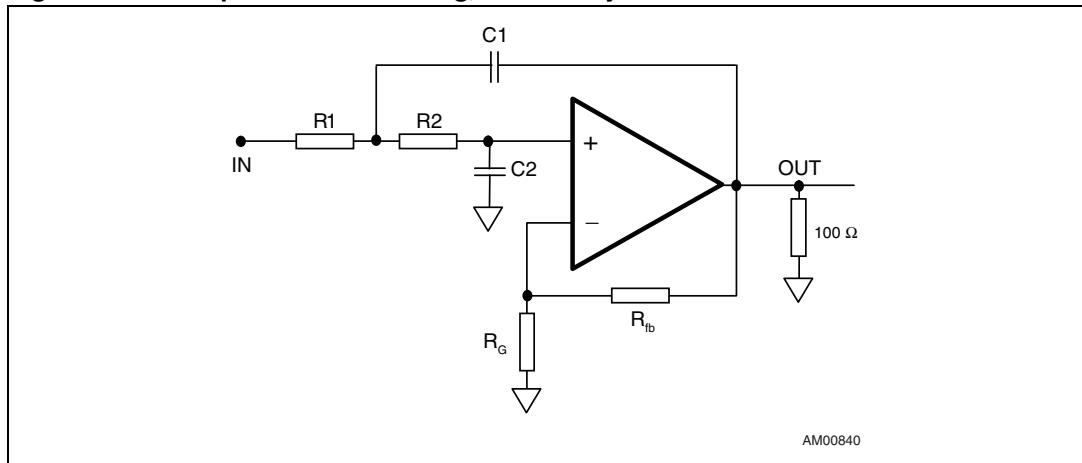
$$R = \frac{R_{in} \times R_{fb}}{R_{in} + R_{fb}}$$

Figure 28. Compensation of the input bias current



7 Active filtering

Figure 29. Low-pass active filtering, Sallen-Key



From the resistors R_{fb} and R_G we can directly calculate the gain of the filter in a classic non-inverting amplification configuration.

Equation 12

$$A_V = g = 1 + \frac{R_{fb}}{R_g}$$

We assume the following expression is the response of the system.

Equation 13

$$T_{j\omega} = \frac{V_{out_{j\omega}}}{V_{in_{j\omega}}} = \frac{g}{1 + 2\zeta \frac{j\omega}{\omega_c} + \frac{(j\omega)^2}{\omega_c^2}}$$

The cut-off frequency is not gain-dependent and so becomes:

Equation 14

$$\omega_c = \frac{1}{\sqrt{R_1 R_2 C_1 C_2}}$$

The damping factor is calculated by [Equation 15](#):

Equation 15

$$\zeta = \frac{1}{2} \omega_c (C_1 R_1 + C_1 R_2 + C_2 R_1 - C_1 R_1 g)$$

The higher the gain, the more sensitive the damping factor is. When the gain is higher than 1, it is preferable to use very stable resistor and capacitor values. In the case of $R_1 = R_2 = R$:

Equation 16

$$\zeta = \frac{2C_2 - C_1 \frac{R_{fb}}{R_g}}{2\sqrt{C_1 C_2}}$$

Due to a limited selection of capacitor values in comparison with resistor values, we can set $C_1 = C_2 = C$, so that:

Equation 17

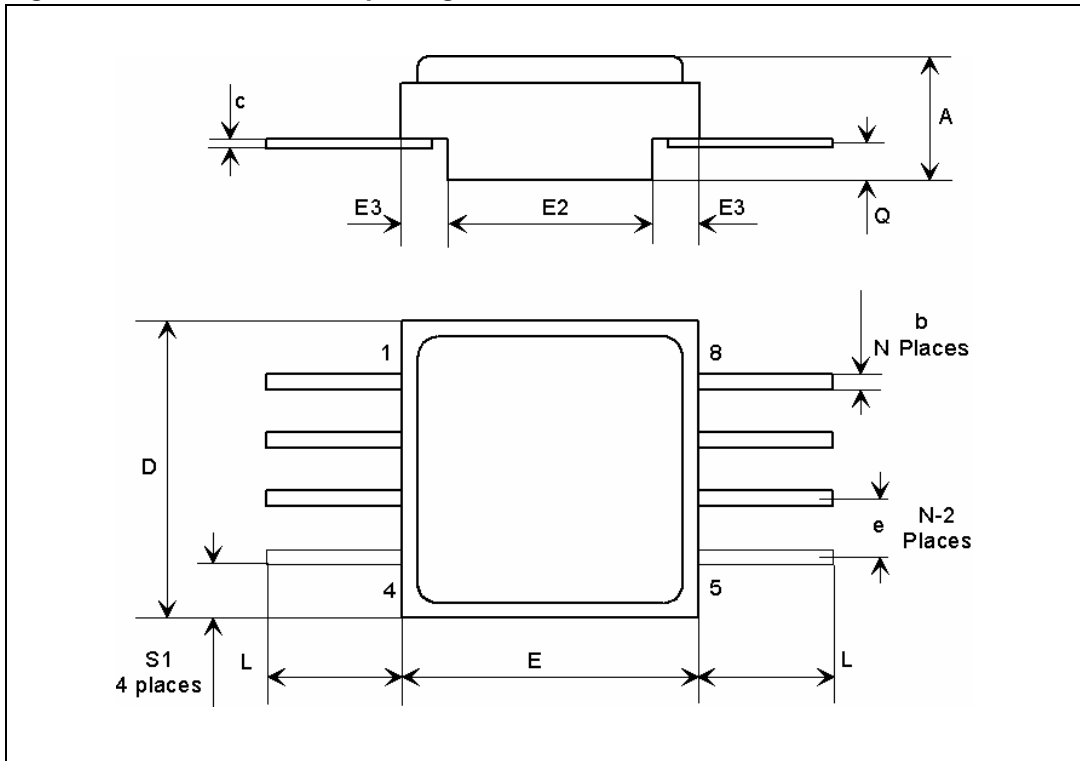
$$\zeta = \frac{2R_2 - R_1 \frac{R_{fb}}{R_g}}{2\sqrt{R_1 R_2}}$$

8 Package information

In order to meet environmental requirements, ST offers these devices in different grades of ECOPACK[®] packages, depending on their level of environmental compliance. ECOPACK[®] specifications, grade definitions and product status are available at: www.st.com. ECOPACK[®] is an ST trademark.

Ceramic Flat-8S package information

Figure 30. Ceramic Flat-8S package outline



1. The upper metallic lid is not electrically connected to any pin, nor to the IC dice inside the package.

Table 7. Ceramic Flat-8S package mechanical data

| Symbol | Dimensions | | | | | |
|--------|-------------|------|------|--------|-------|-------|
| | Millimeters | | | Inches | | |
| | Min. | Typ. | Max. | Min. | Typ. | Max. |
| A | 2.24 | 2.44 | 2.64 | 0.088 | 0.096 | 0.104 |
| b | 0.38 | 0.43 | 0.48 | 0.015 | 0.017 | 0.019 |
| c | 0.10 | 0.13 | 0.16 | 0.004 | 0.005 | 0.006 |
| D | 6.35 | 6.48 | 6.61 | 0.250 | 0.255 | 0.260 |
| E | 6.35 | 6.48 | 6.61 | 0.250 | 0.255 | 0.260 |
| E2 | 4.32 | 4.45 | 4.58 | 0.170 | 0.175 | 0.180 |
| E3 | 0.88 | 1.01 | 1.14 | 0.035 | 0.040 | 0.045 |
| e | | 1.27 | | | 0.050 | |
| L | | 3.00 | | | 0.118 | |
| Q | 0.66 | 0.79 | 0.92 | 0.026 | 0.031 | 0.092 |
| S1 | 0.92 | 1.12 | 1.32 | 0.036 | 0.044 | 0.052 |
| N | 08 | | | 08 | | |

9 Ordering information

Table 8. Order codes

| Order code | Description | Temperature range | Package | Marking | Packing |
|-------------|-------------------|-------------------|---------|-----------------|-----------------------|
| RHF350K1 | Engineering model | -55 °C to +125 °C | Flat-8S | RHF350K1 | Conductive strip pack |
| RHF350K-01V | QMLV-Flight | | | 5962F0723201VXC | |

10 Revision history

Table 9. Document revision history

| Date | Revision | Changes |
|-------------|----------|----------------------------------------------------------------------------------------------------------------------------------------------------------------------------------------------|
| 20-May-2009 | 1 | Initial release. |
| 12-Jul-2010 | 2 | Added <i>Mass</i> in <i>Features</i> on cover page. Added <i>Table 1: Device summary</i> on cover page, with full ordering information. Changed temperature limits in <i>Table 5</i> . |
| 27-Jul-2011 | 3 | Added Note: on page 18 and in the "Pin connections" diagram on the coverpage. |
| 03-Aug-2012 | 4 | Updated <i>Table 5</i> with values after radiations. Replaced note on page 18 with footnote. Minor corrections throughout document. |

Please Read Carefully:

Information in this document is provided solely in connection with ST products. STMicroelectronics NV and its subsidiaries ("ST") reserve the right to make changes, corrections, modifications or improvements, to this document, and the products and services described herein at any time, without notice.

All ST products are sold pursuant to ST's terms and conditions of sale.

Purchasers are solely responsible for the choice, selection and use of the ST products and services described herein, and ST assumes no liability whatsoever relating to the choice, selection or use of the ST products and services described herein.

No license, express or implied, by estoppel or otherwise, to any intellectual property rights is granted under this document. If any part of this document refers to any third party products or services it shall not be deemed a license grant by ST for the use of such third party products or services, or any intellectual property contained therein or considered as a warranty covering the use in any manner whatsoever of such third party products or services or any intellectual property contained therein.

UNLESS OTHERWISE SET FORTH IN ST'S TERMS AND CONDITIONS OF SALE ST DISCLAIMS ANY EXPRESS OR IMPLIED WARRANTY WITH RESPECT TO THE USE AND/OR SALE OF ST PRODUCTS INCLUDING WITHOUT LIMITATION IMPLIED WARRANTIES OF MERCHANTABILITY, FITNESS FOR A PARTICULAR PURPOSE (AND THEIR EQUIVALENTS UNDER THE LAWS OF ANY JURISDICTION), OR INFRINGEMENT OF ANY PATENT, COPYRIGHT OR OTHER INTELLECTUAL PROPERTY RIGHT.

UNLESS EXPRESSLY APPROVED IN WRITING BY TWO AUTHORIZED ST REPRESENTATIVES, ST PRODUCTS ARE NOT RECOMMENDED, AUTHORIZED OR WARRANTED FOR USE IN MILITARY, AIR CRAFT, SPACE, LIFE SAVING, OR LIFE SUSTAINING APPLICATIONS, NOR IN PRODUCTS OR SYSTEMS WHERE FAILURE OR MALFUNCTION MAY RESULT IN PERSONAL INJURY, DEATH, OR SEVERE PROPERTY OR ENVIRONMENTAL DAMAGE. ST PRODUCTS WHICH ARE NOT SPECIFIED AS "AUTOMOTIVE GRADE" MAY ONLY BE USED IN AUTOMOTIVE APPLICATIONS AT USER'S OWN RISK.

Resale of ST products with provisions different from the statements and/or technical features set forth in this document shall immediately void any warranty granted by ST for the ST product or service described herein and shall not create or extend in any manner whatsoever, any liability of ST.

ST and the ST logo are trademarks or registered trademarks of ST in various countries.

Information in this document supersedes and replaces all information previously supplied.

The ST logo is a registered trademark of STMicroelectronics. All other names are the property of their respective owners.

© 2012 STMicroelectronics - All rights reserved

STMicroelectronics group of companies

Australia - Belgium - Brazil - Canada - China - Czech Republic - Finland - France - Germany - Hong Kong - India - Israel - Italy - Japan - Malaysia - Malta - Morocco - Philippines - Singapore - Spain - Sweden - Switzerland - United Kingdom - United States of America

www.st.com

