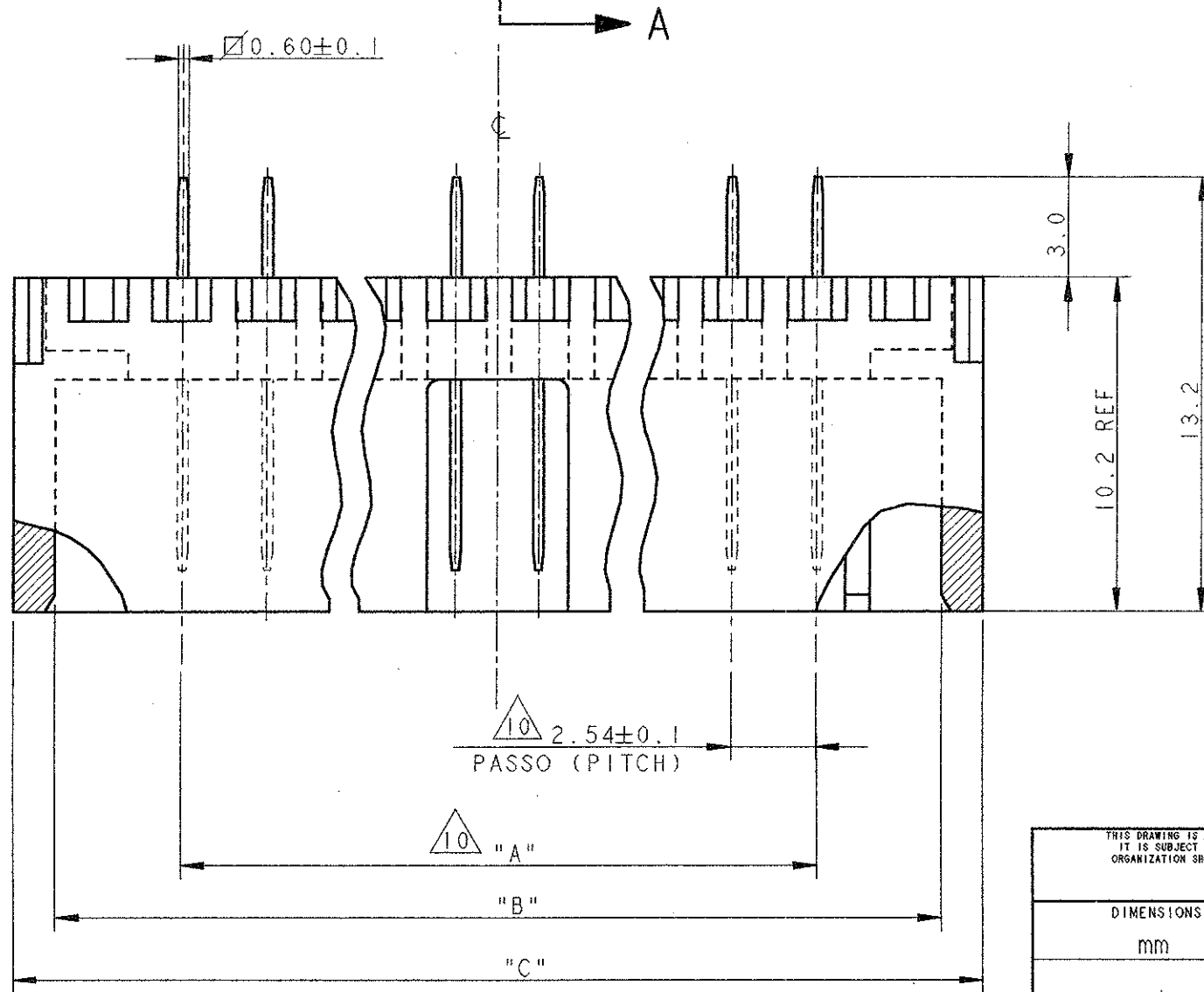
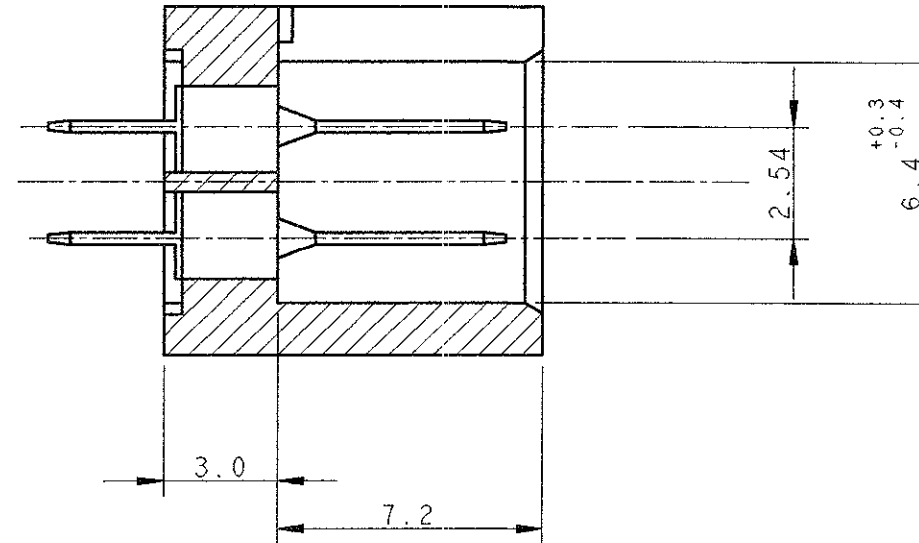
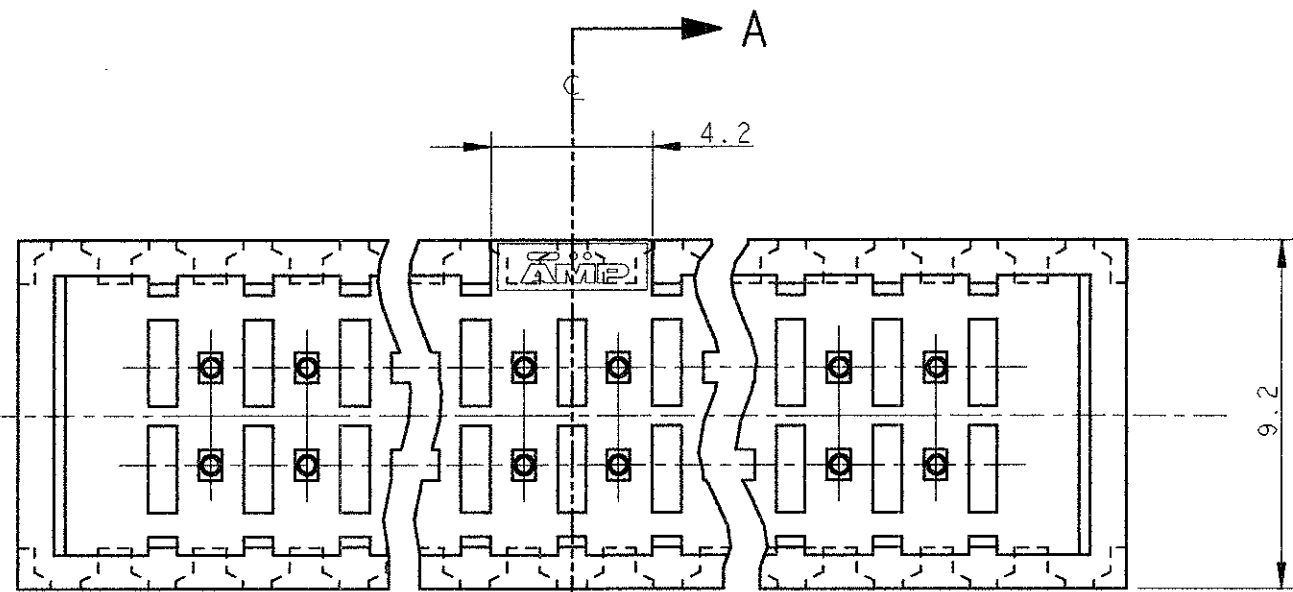


| LOC | DIST | REVISIONS | | | | |
|-----|------|--------------------------|-----------|-----|------|--|
| P | LTR | DESCRIPTION | DATE | DWN | APVD | |
| | T | REVISED, EC ET00-0263-99 | 06 SEP 99 | | | |

SECTION A-A



QUESTO CONNETTORE E' APPROVATO E CERTIFICATO
 (THIS CONNECTOR IS APPROVED AND CERTIFIED)

| | | | |
|--|---|--|--|
| <small>THIS DRAWING IS A CONTROLLED DOCUMENT FOR AMP INCORPORATED. IT IS SUBJECT TO CHANGE AND THE CONTROLLING ENGINEERING ORGANIZATION SHOULD BE CONTACTED FOR THE LATEST REVISION.</small> | | DWN R. FABRI <i>21 JUL 99</i> CHK C. TARTAGLIA APVD PRODUCT SPEC 108-20038 APPLICATION SPEC WEIGHT CUSTOMER DRAWING | AMP AMP Italia S.p.A. C.so F.lli Cervi 15 Collegno (TO) NAME AMP-LATCH POST SUPPORT ASS'Y STRAIGHT LOW PROFILE SIZE A3 CAGE CODE 00779 DRAWING NO ©=281271 SCALE 5:1 |
| DIMENSIONS: mm | TOLERANCES UNLESS OTHERWISE SPECIFIED: ±0.3 0 PLC ± 1 PLC ± 2 PLC ± 3 PLC ± 4 PLC ± ANGLES ±2° FINISH | SIZE A3 CAGE CODE 00779 DRAWING NO ©=281271 SCALE 5:1 | SHEET 1 OF 2 REV T |

| LOC | DIST | REVISIONS | | | | | |
|-----|------|-----------|-----|------------------|------|-----|------|
| | | P | LTR | DESCRIPTION | DATE | DWN | APVD |
| | | - | | SEE SHEET 1 OF 2 | | | |

| POS. | N° VIE | AMP P/N | REV. | DIM. 'A' | DIM. 'B' | DIM. 'C' |
|------|--------|------------|------|----------|----------|----------|
| 10 | 5x2 | 1-281271-1 | S | 10.16 | 17.78 | 20.32 |
| 14 | 7x2 | 1-281272-1 | S | 15.24 | 22.86 | 25.40 |
| 16 | 8x2 | 1-281273-1 | S | 17.78 | 25.40 | 27.94 |
| 20 | 10x2 | 1-281274-1 | S | 22.86 | 30.48 | 33.02 |
| 26 | 13x2 | 1-281275-1 | S | 30.48 | 38.10 | 40.64 |
| 34 | 17x2 | 1-281276-1 | S | 40.64 | 48.26 | 50.80 |
| 40 | 20x2 | 1-281277-1 | S | 48.26 | 55.88 | 58.42 |
| 50 | 25x2 | 1-281278-1 | S | 60.96 | 68.58 | 71.12 |

| POS. | N° VIE | AMP P/N | REV. | DIM. 'A' | DIM. 'B' | DIM. 'C' |
|------|--------|----------|------|----------|----------|----------|
| 10 | 5x2 | 281271-5 | S | 10.16 | 17.78 | 20.32 |
| 14 | 7x2 | 281272-5 | S | 15.24 | 22.86 | 25.40 |
| 16 | 8x2 | 281273-5 | S | 17.78 | 25.40 | 27.94 |
| 20 | 10x2 | 281274-5 | S | 22.86 | 30.48 | 33.02 |
| 26 | 13x2 | 281275-5 | S | 30.48 | 38.10 | 40.64 |
| 34 | 17x2 | 281276-5 | S | 40.64 | 48.26 | 50.80 |
| 40 | 20x2 | 281277-5 | S | 48.26 | 55.88 | 58.42 |
| 50 | 25x2 | 281278-5 | S | 60.96 | 68.58 | 71.12 |
| 60 | 30x2 | 281836-5 | S | 73.66 | 81.28 | 83.82 |

| POS. | N° VIE | AMP P/N | REV. | DIM. 'A' | DIM. 'B' | DIM. 'C' |
|------|--------|----------|------|----------|----------|----------|
| 10 | 5x2 | 281271-3 | S | 10.16 | 17.78 | 20.32 |
| 14 | 7x2 | 281272-3 | S | 15.24 | 22.86 | 25.40 |
| 16 | 8x2 | 281273-3 | S | 17.78 | 25.40 | 27.94 |
| 20 | 10x2 | 281274-3 | S | 22.86 | 30.48 | 33.02 |
| 26 | 13x2 | 281275-3 | S | 30.48 | 38.10 | 40.64 |
| 34 | 17x2 | 281276-3 | S | 40.64 | 48.26 | 50.80 |
| 40 | 20x2 | 281277-3 | S | 48.26 | 55.88 | 58.42 |
| 50 | 25x2 | 281278-3 | S | 60.96 | 68.58 | 71.12 |
| 60 | 30x2 | 281836-3 | S | 73.66 | 81.28 | 83.82 |

| POS. | N° VIE | AMP P/N | REV. | DIM. 'A' | DIM. 'B' | DIM. 'C' |
|------|--------|----------|------|----------|----------|----------|
| 10 | 5x2 | 281271-2 | S | 10.16 | 17.78 | 20.32 |
| 14 | 7x2 | 281272-2 | S | 15.24 | 22.86 | 25.40 |
| 16 | 8x2 | 281273-2 | S | 17.78 | 25.40 | 27.94 |
| 20 | 10x2 | 281274-2 | S | 22.86 | 30.48 | 33.02 |
| 26 | 13x2 | 281275-2 | S | 30.48 | 38.10 | 40.64 |
| 34 | 17x2 | 281276-2 | S | 40.64 | 48.26 | 50.80 |
| 40 | 20x2 | 281277-2 | S | 48.26 | 55.88 | 58.42 |
| 50 | 25x2 | 281278-2 | S | 60.96 | 68.58 | 71.12 |
| 60 | 30x2 | 281836-2 | S | 73.66 | 81.28 | 83.82 |

| POS. | N° VIE | AMP P/N | REV. | DIM. 'A' | DIM. 'B' | DIM. 'C' |
|------|--------|----------|------|----------|----------|----------|
| 10 | 5x2 | 281271-1 | S | 10.16 | 17.78 | 20.32 |
| 14 | 7x2 | 281272-1 | S | 15.24 | 22.86 | 25.40 |
| 16 | 8x2 | 281273-1 | S | 17.78 | 25.40 | 27.94 |
| 20 | 10x2 | 281274-1 | S | 22.86 | 30.48 | 33.02 |
| 26 | 13x2 | 281275-1 | S | 30.48 | 38.10 | 40.64 |
| 34 | 17x2 | 281276-1 | S | 40.64 | 48.26 | 50.80 |
| 40 | 20x2 | 281277-1 | S | 48.26 | 55.88 | 58.42 |
| 50 | 25x2 | 281278-1 | S | 60.96 | 68.58 | 71.12 |
| 60 | 30x2 | 281836-1 | S | 73.66 | 81.28 | 83.82 |

- ① MATERIALE BLOCCHETTO: P.B.T. CARICATO VETRO, COLORE NERO
(HOUSING MATERIAL: P.B.T. G.F. FILLED, BLACK COLOUR)
- ② MATERIALE BLOCCHETTO: P.B.T. CARICATO VETRO, COLORE GRIGIO
(HOUSING MATERIAL: P.B.T. G.F. FILLED, GRAY COLOUR)
- ③ MATERIALE BLOCCHETTO: RYTON, COLORE MARRONE
(HOUSING MATERIAL: RYTON, BROWN COLOUR)
- ④ MATERIALE CONTATTO: OTTONE
(CONTACT MATERIAL: BRASS)
- ⑤ FINITURA CONTATTO: 0.76µm DI ORO SU NICKEL NELLA ZONA DI CONTATTO
STAGNO SU NICKEL NELLA ZONA A SALDARE
(CONTACT FINISH: 0.76µm OF GOLD OVER NICKEL ON CONTACT ZONE
TIN OVER NICKEL ON SOLDER TAIL)
- ⑥ FINITURA CONTATTO: 0.38µm DI ORO SU NICKEL NELLA ZONA DI CONTATTO
STAGNO SU NICKEL NELLA ZONA A SALDARE
(CONTACT FINISH: 0.38µm OF GOLD OVER NICKEL ON CONTACT ZONE
TIN OVER NICKEL ON SOLDER TAIL)
- ⑦ FINITURA CONTATTO: 0.20µm DI ORO SU NICKEL NELLA ZONA DI CONTATTO
STAGNO SU NICKEL NELLA ZONA A SALDARE
(CONTACT FINISH: 0.20µm OF GOLD OVER NICKEL ON CONTACT ZONE
TIN OVER NICKEL ON SOLDER TAIL)
- ⑧ OBSOLETO
(OBSOLETE)
- ⑨ NON IN PRODUZIONE
(NOT YET RELEASED IN PRODUCTION)
- ⑩ TOLLERANZA NON CUMULATIVA
(NOT CUMULATIVE TOLERANCE)

| | | | | |
|---|--|------------------|---|-----------|
| THIS DRAWING IS A CONTROLLED DOCUMENT FOR AMP INCORPORATED. IT IS SUBJECT TO CHANGE AND THE CONTROLLING ENGINEERING ORGANIZATION SHOULD BE CONTACTED FOR THE LATEST REVISION. | | DWN | AMP Italia S.p.A. C.so F.lli Cervi 15 Collegno (TO) | |
| DIMENSIONS: | | CHK | NAME | |
| TOLERANCES UNLESS OTHERWISE SPECIFIED: | | APVD | AMP-LATCH POST SUPPORT ASS'Y STRAIGHT LOW PROFILE | |
| 0 PLC ± | | PRODUCT SPEC | SIZE | CAGE CODE |
| 1 PLC ± | | APPLICATION SPEC | A3 | 00779 |
| 2 PLC ± | | WEIGHT | DRAWING NO | |
| 3 PLC ± | | CUSTOMER DRAWING | C-281271 | |
| 4 PLC ± | | SCALE | SHEET 2 OF 2 | |
| ANGLES ± | | REV | T | |
| FINISH ± | | | | |