

ADSL Magnetics

EP-7 Surface-Mount Inductors

- Designed with two well balanced and coupled windings for use in ADSL applications where filtering is required
- Operating temperature range: -40° C to +85° C
- Meets IEC 695, 2-2 flammability requirements
- PWB Process Capability: standard printed wiring board assembly techniques, total-immersion cleaning
- Reliability testing: shock, vibration, temperature cycling, temperature - humidity - bias

ELECTRICAL SPECIFICATIONS AT 25° C

Part Number	Inductance ¹ μH ±5%	DCR Ω max
	(1-4)	(1-4)
S560-6100-09	20.6	0.25
S560-6100-10	73.6	0.5
S560-6100-11	103.25	0.5

1. measured at 0.1 Vac, 10 kHz

Part Number	Turns Ratio ¹ ± 1%	Inductance ² μH ± 5%	Leakage Inductance ³ μH max	DCR Ω max		Direct Capacitance ⁴ pF max	Dielectric Rating Vrms
	(1-5) : (2-4)	(1-5)	(1-5)	(1-5)	(2-4)	(1-5) & (2-4)	(1-5) to (2-4)
S560-6100-12	1 : 1	88	5	0.65	0.65	100	1000
S560-6100-13	1 : 1	99	5	0.7	0.7	100	1000
S560-6100-14	1 : 1	120.5	5	0.55	0.55	100	1000
S560-6100-15	1 : 1	129.5	5	0.55	0.55	100	1000
S560-6100-33	1 : 1	2 mH	5	8.5	8.5	-	1000

1. measured at 20 kHz, 1 Vrms

2. measured at 0.1 Vac, 10 kHz

3. measured at 0.1 Vac, 100 kHz, short terminals 2 & 4

4. measured at 1 Vrms, 1 kHz

Part Number	Turns Ratio ¹ ± 1%	Inductance ² mH		DCR Ω max		Dielectric Rating Vac
	(1-3) : (4-6)	(1-3)	(1-6) ³	(1-3)	(4-6)	between 1 & core ⁴
S560-6100-24	1 : 1	0.5	2	1.65	1.65	600

1. measured at 20 kHz, 1 Vrms

2. measured at 10 kHz, 0.1 Vrms

3. connect 3 to 4

4. connect 3 to 6

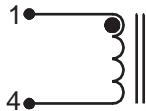
©2000 Bel Fuse Inc. Specifications subject to change without notice. 04.00

ADSL Magnetics EP-7 Surface-Mount Inductors

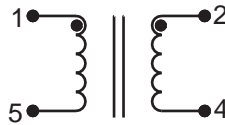
TM00329

SCHEMATIC

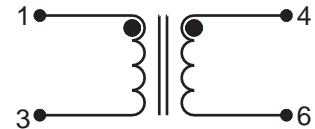
S560-6100-09
S560-6100-10
S560-6100-11



S560-6100-12
S560-6100-13
S506-6100-14
S560-6100-15
S560-6100-33



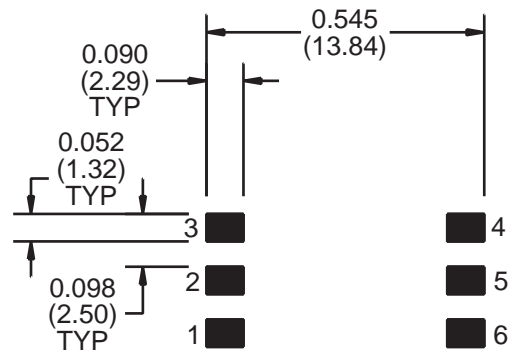
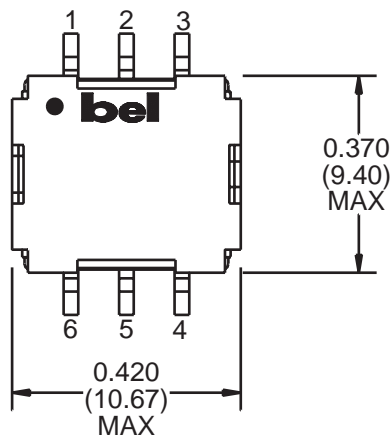
S560-6100-24



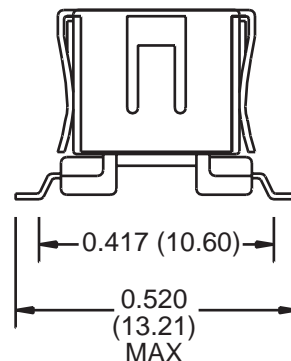
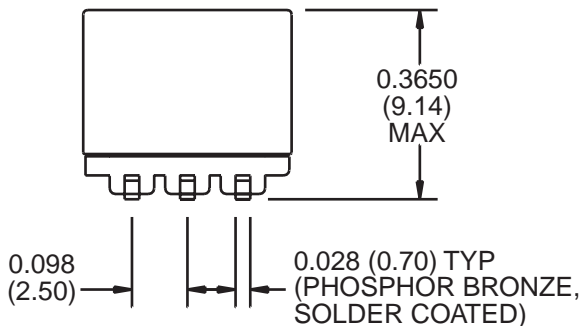
MECHANICAL

S560-6100-09
S560-6100-10
S560-6100-11
S560-6100-12
S560-6100-13

S506-6100-14
S560-6100-15
S560-6100-24
S560-6100-33



SUGGESTED PCB PAD LAYOUT



©2000 Bel Fuse Inc. Specifications subject to change without notice. 04.00

CORPORATE

Bel Fuse Inc.
198 Van Vorst Street
Jersey City, NJ 07302
Tel 201-432-0463
Fax 201-432-9542
www.belfuse.com

FAR EAST

Bel Fuse Ltd.
8F / 8 Luk Hop Street
San Po Kong
Kowloon, Hong Kong
Tel 852-2328-5515
Fax 852-2352-3706
www.belfuse.com

EUROPE

Bel Fuse Europe Ltd.
Preston Technology Management Centre
Marsh Lane, Suite G7, Preston
Lancashire, PR1 8UD, U.K.
Tel 44-1772-556601
Fax 44-1772-888366
www.belfuse.com