

Fig. 1

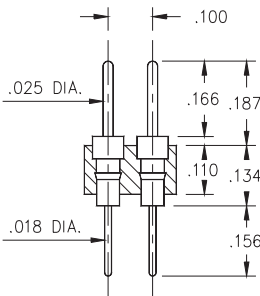


Fig. 2

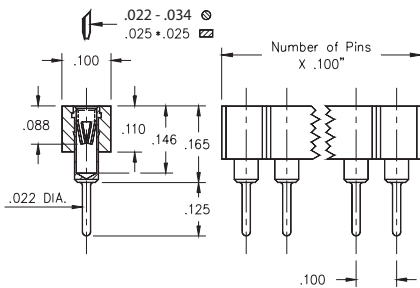


Fig. 3

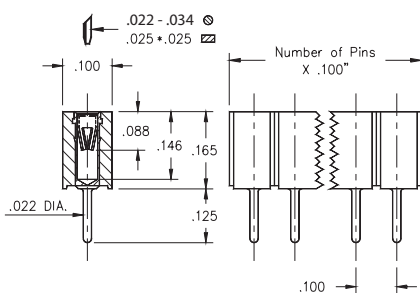


Fig. 4

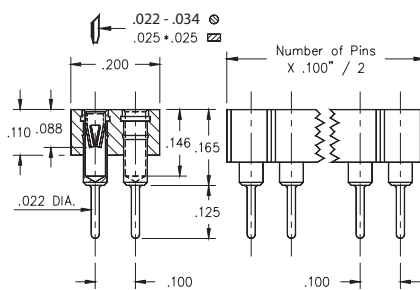


Fig. 5

- Pin headers use MM# 0290 pins. (See page 173 for details)
- Low profile sockets use MM# 1303 pins. (See page 148 for details)
- Receptacles accept .022"-.034" diameters and .025" square pins.
- Receptacles use Hi-Rel, 6 finger #16 contact rated at 4.5 amps. (See page 210 for details)



Ordering Information

| | | |
|---------------|---|------------------------------------|
| Fig. 1 | Single Row | .025 Pin / .018 Solder Tail |
| | 350-XX-0__-00-001000 Specify # of pins → 01-64 | |
| Fig. 2 | Double Row | .025 Pin / .018 Solder Tail |
| | 450-XX-0__-00-001000 Specify # of pins → 02-64 | |

XX= Plating Code
See Below

For RoHS compliance, select plating code. For the gold option (XX=10) also change part number from X50-XX-OXX-00-001000 to X50-10-OXX-00-001100

| | | | | |
|--------------------------|-----------|-------------|-----------|--|
| SPECIFY PLATING CODE XX= | 10 | 90 | 40 | |
| Pin Plating | 10μ" Au | 200μ" Sn/Pb | 200μ" Sn | |

| | |
|---------------|--|
| Fig. 3 | Single Row Low Profile Socket (short insulator) |
| | 801-XX-0__-10-003000 Specify # of pins → 01-64 |
| Fig. 4 | Single Row Low Profile Socket (long insulator) |
| | 801-XX-0__-10-013000 Specify # of pins → 01-36 |
| Fig. 5 | Double Row Low Profile Socket |
| | 803-XX-0__-10-003000 Specify # of pins → 02-72 |

XX= Plating Code
See Below

For RoHS compliance, select plating code. For the all gold option (XX=13) also change part number from 80X-XX-OXX-10-0X3000 to 80X-13-OXX-10-0X3100

| | | | | | |
|--------------------------|-----------|-------------|-------------|-----------|-----------|
| SPECIFY PLATING CODE XX= | 13 | 93 | 99 | 43 | 44 |
| Sleeve (Pin) | 10μ" Au | 200μ" Sn/Pb | 200μ" Sn/Pb | 200μ" Sn | 200μ" Sn |
| Contact (Clip) | 30μ" Au | 30μ" Au | 200μ" Sn/Pb | 30μ" Au | 200μ" Sn |