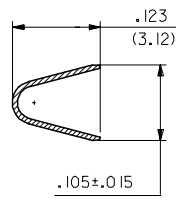
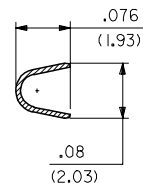


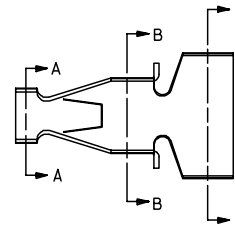
SECTION C-C



SECTION B-B



SECTION A-A

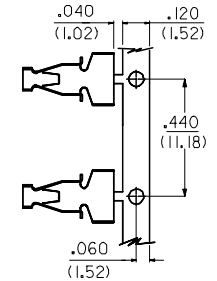


NOTES:

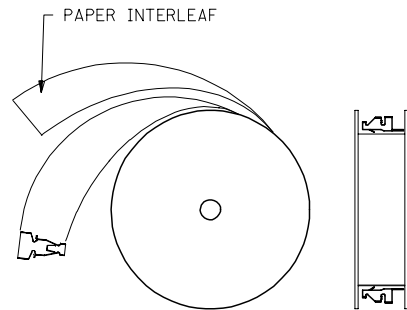
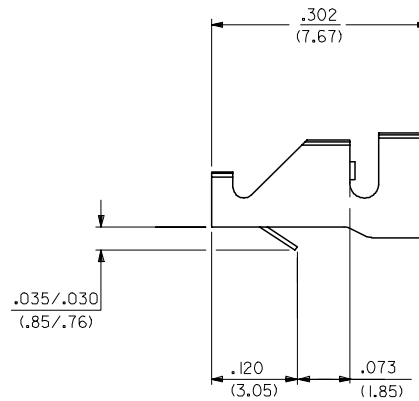
1. MATERIAL: 260 BRASS .008 THK
2. TERMINAL 4706-(***)* ACCEPTS 16 TO 18 AWG WIRE WITH INSULATION DIA OF .120 MAX
3. TERMINALS CONFORM TO SOLDERABILITY SPEC 152
4. PRODUCT SPECIFICATION: PS-4706-001

4706-*(****)*
 BLANK=SEE SHT 1
 3=SEE SHEET 2
 FORM
 BLANK=CHAIN
 L=LOOSE
 PLATING PER SDES-88
 *(P909) OVERALL HOT TIN DIP: 2.54 MICROMETERS MIN

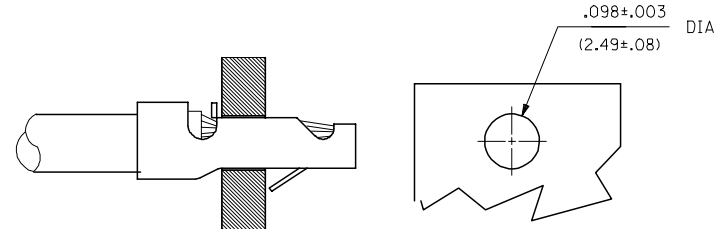
*THE PRIMARY SHIPPING CARTON WILL BE LABELED "COMPLIANT TO ROHS DIRECTIVE 2002/95/EC AND ELV ANNEX II OF DIRECTIVE 2000/53/EC." CARTONS WITHOUT THIS LABEL MAY CONTAIN PRODUCT WITH TIN-LEAD PLATING.



CARRIER DETAIL



WINDING SPEC



RECOMMENDED PC BOARD

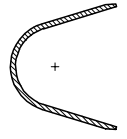
4706-(***)*

| | | | |
|------------|-------------|--|--|
| EDP NO. | ENG NO | | |
| 02-09-2105 | 4706-(P909) | | |
| - - | -() | | |
| - - | -() | | |

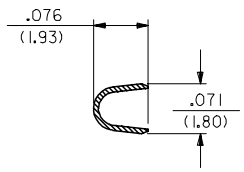
| | | | | | |
|--|---|--|---|---|--|
| CHANGE TO ME10 EC NO: UCP2005-0966 DRW/ADR/ATNOL 2004/11/19 CHKD: SAMIEC 2004/11/19 APPR: MMARGULIS 2004/11/05 J1 | QUALITY SYMBOLS ▽=0 ▽=0 | GENERAL TOLERANCES (UNLESS SPECIFIED) mm INCH 4 PLACES ± --- ± --- 3 PLACES ± --- ± .010 2 PLACES ± 0.25 ± .014 1 PLACE ± 0.36 ± --- ANGULAR ±1/2° | DIMENSION STYLE .062 SCALE --- IN/MM DRAWN BY DATE SAMIEC 02/25/92 CHECKED BY DATE PATEL 02/25/92 APPROVED BY DATE LENZ 02/25/92 | DESIGN UNITS INCH THIRD ANGLE PROJECTION | TITLE STRAIN RELIEF TERMINAL MOLEX INCORPORATED MATERIAL NO. SEE CHART DOCUMENT NO. SD-4706 SHEET NO. 1 OF 2 |
| | DRAFT WHERE APPLICABLE MUST REMAIN WITHIN DIMENSIONS | | | | |
| | THIS DRAWING CONTAINS INFORMATION THAT IS PROPRIETARY TO MOLEX INCORPORATED AND SHOULD NOT BE USED WITHOUT WRITTEN PERMISSION | | | | |
| | SIZE C | | | | |

13 12 11 10 9 8 7 6 5 4 3 2 1

J
I
H
G
F
E
D
C
B
A



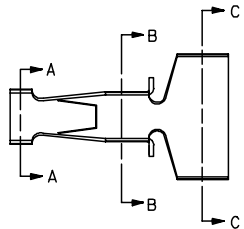
SECTION C-C



SECTION B-B



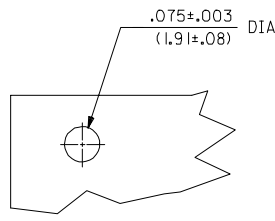
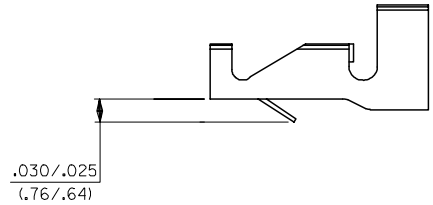
SECTION A-A



NOTES:

1. THIS PART IS THE SAME AS SHEET 1 EXCEPT AS SHOWN
2. MATERIAL: 260 BRASS .006 THK
3. FINISH: (909) * OVERALL HOT TIN DIP: 2.54 MICROMETERS MIN.
4. TERMINAL 4706-3(***)* ACCEPTS 18 TO 24 AWG WIRE WITH INSULATION DIA OF .120 MAX

*THE PRIMARY SHIPPING CARTON WILL BE LABELED 'COMPLIANT TO RoHS DIRECTIVE 2002/95/EC AND ELV ANNEX II OF DIRECTIVE 2000/53/EC.' CARTONS WITHOUT THIS LABEL MAY CONTAIN PRODUCT WITH TIN-LEAD PLATING.



RECOMMENDED PC BOARD
.062 THK

| | | | |
|--------------|--------------|--|--|
| 4706-3(***)* | | | |
| EDP NO. | ENG NO. | | |
| 02-07-2101 | 4706-3(P909) | | |
| | | | |

| | | | | | | |
|---|----------------------|---------------------------------------|---|-------------------------------------|-------------------|------------------------|
| CHANGE TO ME10 EC NO: UCP2005-0966 DRW/ADR/TOL 2004/11/19 CHKD: SAMIEC 2004/11/19 APPR: YWARGULLIS 2004/11/04 | QUALITY SYMBOLS | GENERAL TOLERANCES (UNLESS SPECIFIED) | DIMENSION STYLE IN/MM | SCALE --- | DESIGN UNITS INCH | THIRD ANGLE PROJECTION |
| | ▽=0 | 4 PLACES ± --- ± --- | DRAWN BY DATE | TITLE | | |
| | ▽=0 | 3 PLACES ± --- ± .010 | SAMIEC 02/25/92 | STRAIN RELIEF TERMINAL | | |
| | | 2 PLACES ± 0.25 ± .014 | CHECKED BY DATE | MOLEX INCORPORATED | | |
| | 1 PLACE ± 0.36 ± --- | PATEL 02/25/92 | APPROVED BY DATE | MATERIAL NO. DOCUMENT NO. SHEET NO. | | |
| | ANGULAR ±1/2° | LENZ 02/25/92 | SEE CHART SD-4706 | | | 2 |
| | | | DRAFT WHERE APPLICABLE MUST REMAIN WITHIN DIMENSIONS | | | |
| | | | THIS DRAWING CONTAINS INFORMATION THAT IS PROPRIETARY TO MOLEX INCORPORATED AND SHOULD NOT BE USED WITHOUT WRITTEN PERMISSION | | | |

12 11 10 9 8 7 6 5 4 3 2 1