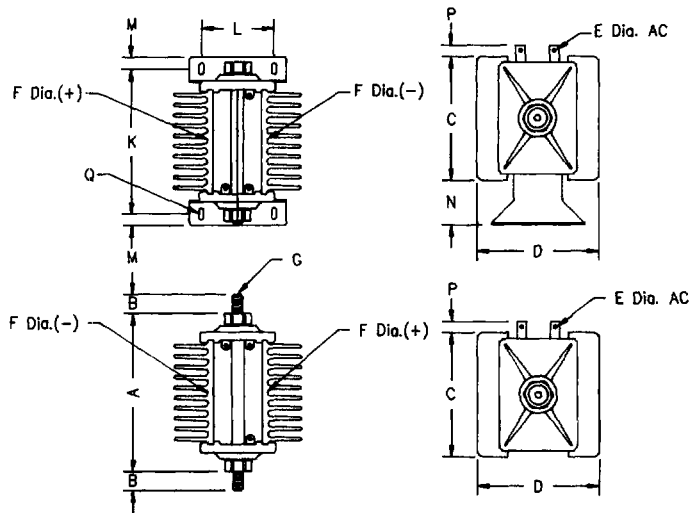


Rectipoint Silicon Power Rectifiers



Dimensions			
X Type		Y Type	
Inches	Millimeters	Inches	Millimeters
A	4.31	4.0	101.6
B	.625	0.5	12.7
C	4.0	2.5	63.5
D	3.12	2.56	65.0
E	.201	1.77	4.495
F	.265	.198	5.029
G	3/8-16UNC-3A	5/16-18UNC-3A	
K	3.93	3.75	95.2
L	1.5	1.25	31.7
M	.281	.281	7.137
N	.875	.937	23.79
P	.625	.625	15.87
Q	3/16x5/16 ---	3/16x5/16 ---	

Microsemi Catalog Number	Type of Circuit	Rated Continuous DC	
		Natural Convection	Forced Air at 800 LFM
Y20-B1-1	1 Phase	10	20
Y21-B1-1	Bridge		
Y20-Z1-1	4-1-1-B	14	28
	3 Phase	12	36
Y21-Z1-1	6-1-1-Z	22	66
X20-B1-1	1 Phase	15	30
X21-B1-1	Bridge	25	50
X34-B1-1	4-1-1-B	35	70
X37-B1-1		43	86
X20-Z1-1	3 Phase	18	54
X21-Z1-1	Bridge	28	84
X34-Z1-1	6-1-1-B	35	105
X37-Z1-1		43	130

- Complete bridge with heatsinks - no assembly required
- Available in single or three phase bridge assemblies
- Available with bracket or bolt mounting
- Can be supplied with either DO-4 or DO-5 rectifiers
- Blocking voltages to 1600V

Rectipoint Silicon Power Rectifiers

Code Number Identification							
Size of Heat Sink	Type of Diode	Peak Reverse Voltage	Type of Circuit	Number of Diodes in Series	Type of Mounting	Number of Diodes in Parallel	Special Features
X-3"x4"	20	20-200 30-300 40-400 60-600 80-800 90-900 100-1000 120-1200 160-1600	B-1 Phase Bridge	1	N-Stud	1	S-Surge Suppressor Furnished
Y-2 1/2"x2 3/4"	21		Z-3 Phase Bridge		B-Brackets		
	34 37						

Electrical Specifications
 Current range - 10 to 43 amperes (86 amperes with forced air cooling of 800 LFM) in single phase bridge 12 to 43 amperes (130 amperes with forced air of 800 LFM) in three-phase bridge, input voltage - up to 460 volts RMS. Ambient temperature: -65 to 150°C, operating frequency: up to 10,000 Hz.

Material Specifications
 The finned heat sinks are corrosion resistant aluminum alloy. The end plates are molded from glass filled polyester resin. This material is non-flammable and self extinguishing and shows no heat distortion at 200°C. It has a tensile strength of approximately 8000 lbs. per square inch and a dielectric strength in excess of 300 volts per mil.

