

SPECIFICATIONS

Mechanical

Contact Retention Force: 1.80kgf min.
Mating Force: 340gf max. per Contact Pair
Unmating Force: 28gf min. per Contact Pair
Durability: 500 Cycles

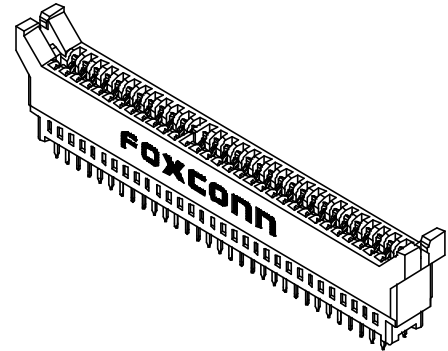
Electrical

Current Rating: 3A max.
Current Voltage: 250V
Contact Resistance: 15mW max. initial
Dielectric Withstanding Voltage: 1000V
Insulation Resistance: 5000MW min.

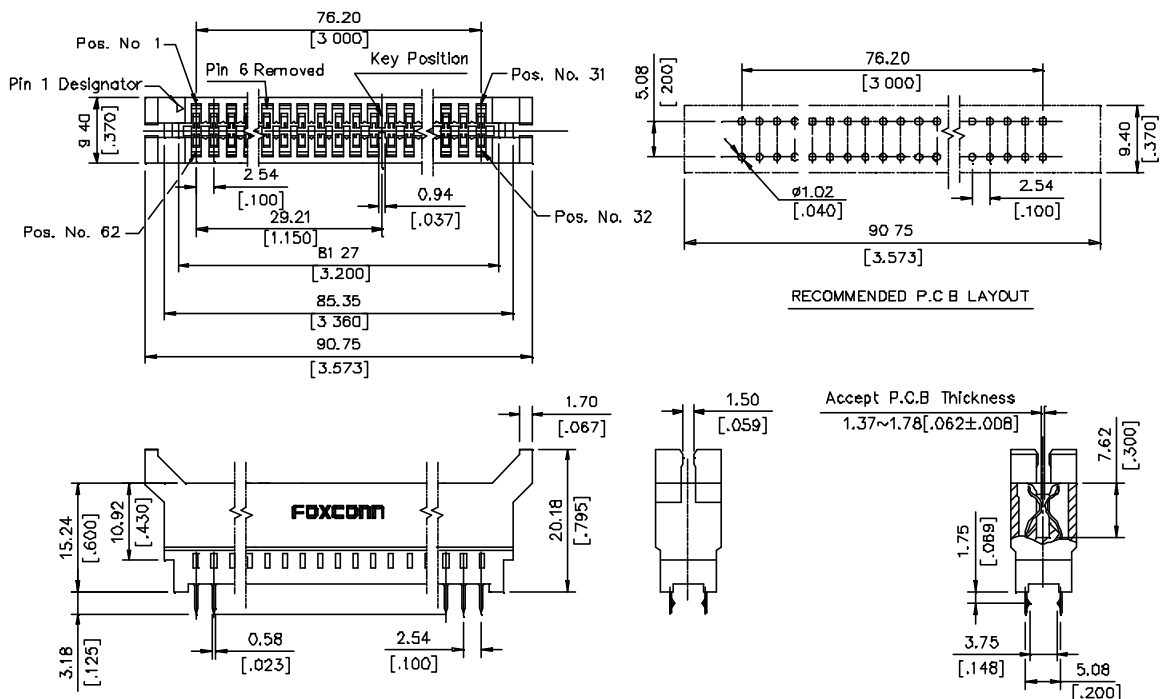
Physical

Housing: Thermoplastic, UL 94V-0 rated, in Black Color
Contact: Copper alloy
Plating: See "ORDERING INFORMATION"
Operating Temperature: -55 to +85

ES Series
Vertical Type, Narrow Pad
2.54mm [.100"] Pitch
62 Pos.



DRAWING



ORDERING INFORMATION

