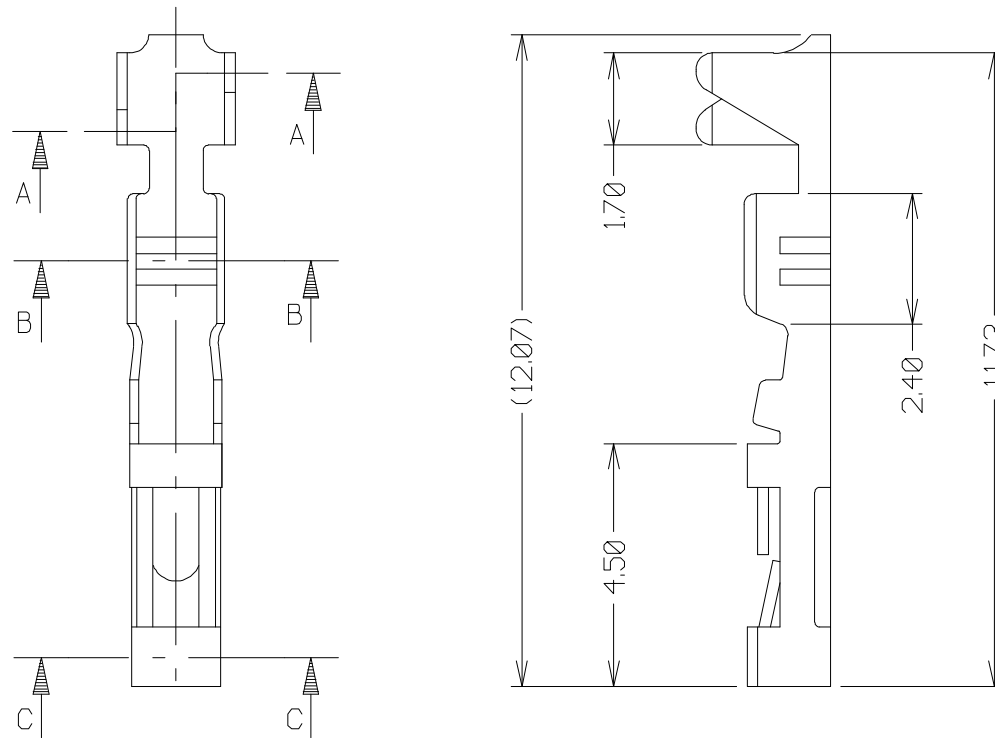


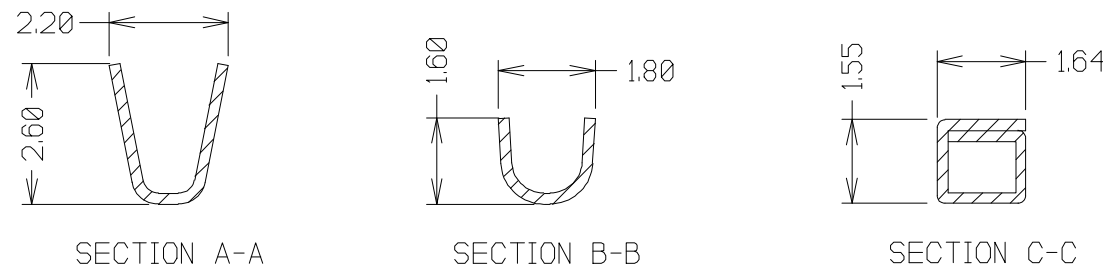
Customer Information Sheet

DRAWING No.: M20-11800XX SHEET 2 OF 2 IF IN DOUBT - ASK © NOT TO SCALE THIRD ANGLE PROJECTION ALL DIMENSIONS IN mm



- NOTES:
1. ACCEPTS WIRE RANGE 22-30 AWG.
 2. DIAMETER OF WIRE INSULATION = $\varnothing 1.60-0.90\text{mm}$.
 3. STRIP WIRE BY 4.0-3.5mm.
 4. PRODUCT SUPPLIED LOOSE.
 5. TO BE USED WITH CRIMP MOULDINGS M20-106XX00 AND M20-107XX00. SEE MOULDING DRAWING FOR COMPONENT SPECIFICATION.
 6. WITHDRAWAL FORCE = 1.5 - 0.8N.
 7. FOR COMPLETE SPECIFICATION, SEE COMPONENT SPECIFICATION C001XX (LATEST ISSUE).

ORDER CODE:
M20-11800XX
FINISH ————
22 = 0.025 μ SELECTIVE GOLD
06 = 2.5 μ TIN



6	05.05.99	4875
ISS.	DATE	C/NOTE
APPROVED:		
CHECKED:		
DRAWN: W. J. BOURNE		
CUSTOMER REF.:		
ASSEMBLY DRG:		



HARWIN INC U.S.A. TEL: (812) 285 0055 FAX: (812) 285 0056	HARWIN PLC U.K. TEL: 01705 370451 FAX: 01705 314590	HARWIN PTE SINGAPORE TEL: 65 7794909 FAX: 65 7793868
--	--	---

THIS DRAWING AND ANY INFORMATION OR DESCRIPTIVE MATTER SET OUT HEREON ARE CONFIDENTIAL AND COPYRIGHT PROPERTY OF THE HARWIN GROUP AND MUST NOT BE DISCLOSED, LOANED, COPIED OR USED FOR MANUFACTURING, TENDERING OR FOR ANY OTHER PURPOSE WITHOUT THEIR WRITTEN PERMISSION.

TOLERANCES
X = $\pm 1\text{mm}$
X.X = $\pm 0.25\text{mm}$
X.XX = $\pm 0.10\text{mm}$
X.XXX = $\pm 0.01\text{mm}$
ANGLES = $\pm 1^\circ$
UNLESS STATED

MATERIAL:
BRASS
FINISH: SEE ABOVE
S/AREA: mm²

TITLE:
2.54mm FEMALE CRIMP TERMINAL (LOOSE)

DRAWING NUMBER:
M20-11800XX

SHT
2
OF
2