

DIAMOND

Fiber Optic Components

MT-RJ

**SFF DUPLEX
CONNECTOR**

MT-RJ M0 MM

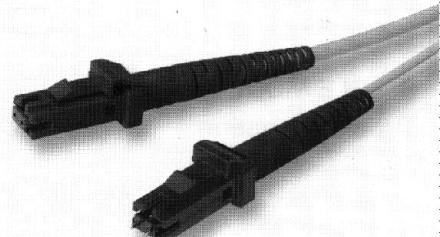
MT-RJ S0 SM

The MT-RJ is a SFF duplex connector with a moulded body, including two fibers spaced 750 μm apart within a plastic mini-MT ferrule.

The DIAMOND's MT-RJ connector is the ideal solution for 10-100 Mbit Ethernet up to applications in Gigabit Ethernet.

This connector is available as an assembled pigtail or patchcord; with a mini zip cord construction, or a 3mm cable with a ribbon of two fibers inside.

Due to its excellent performance and technical characteristics, it's the optimal connector system for FTT-X applications.



APPLICATIONS: LAN, FTT-X (including FTTC, FTTH, FTTD)

STANDARDS:

- ISO/IEC 11801
- EN 50173
- TIA/EIA-569-A
- TIA/EIA-568-B.3

DESIGN/MATERIALS: Design: Plug and pull with well-known RJ style latch. Installable in conventional RJ-45 faceplates.

Fiber alignment: Through precision guide pins on the male plugs fitting exactly the corresponding guide holes of the female plugs

Polish: 0° Convex (PC)

Ferrule: Standard mini-MT double fiber ferrule

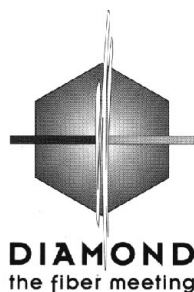
AVAILABLE AS:

- Unterminated connector
- Terminated patchcord or pigtail

See ordering information on reverse

SPECIFICATIONS:

	Single mode	Multimode	Units	Test conditions
Insertion loss (IL)	typ 0.4 max 1	typ 0.2 max 0.5	dB	IEC 61300-3-4; $\lambda = 1300/1550\text{nm}$
Return loss (RL)	typ 50 min 40	typ 30 min 20	dB	IEC 61300-3-6; $\lambda = 1300/1550\text{nm}$
Repeatability of IL	max ± 0.2	max ± 0.2	dB	Over service life
Service life	500 mate/demate cycles			
Operating temperature	-40 +85*		°C	
Strain relief (cable)	> 50		N	



DIAMOND SA
Via dei Patrizi 5
CH-6616 LOSONE
Tel. ++41-91/785 45 45
Fax ++41-91/785 45 00
e-mail: info@diamond-fo.com

*Specifications subject to change
without notice*

002-037-214P001062

Order numbers:

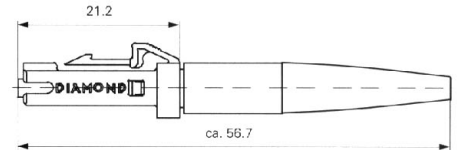
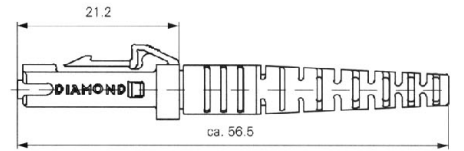
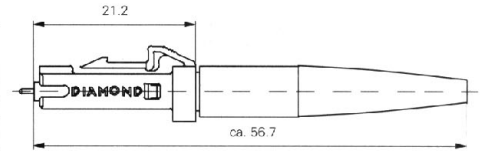
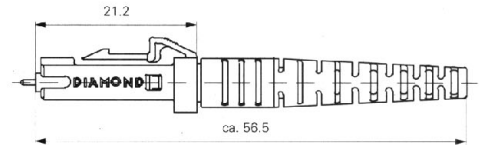
CONNECTORS

SINGLE MODE (with pins)

Type designation: **MT-RJ S0**
 Ferrule type: **Standard Mini MT**
 External parts: **Plastic blue**
 Polish geometry: **Convex (PC)**

Dimensions Fiber/Cable	Order Number	
	Unterminated connector	Terminated assembly
2 x 9/125/900/3000	2 7 1 - 0 0 0 - 0 0 4 L 0 0 0	2 7 1 - x x x x - 0 5 4 L x x x x
9/125/900/1500/3000	2 7 1 - 0 0 0 - 0 0 6 L 0 0 0	2 7 1 - x x x x - 0 5 6 L x x x x

Connectors for other fiber and cable dimensions available upon request



SINGLE MODE (without pins)

Type designation: **MT-RJ S0**

Dimensions Fiber/Cable	Order Number	
	Unterminated connector	Terminated assembly
2 x 9/125/900/3000	2 7 4 - 0 0 0 - 0 0 4 L 0 0 0	2 7 4 - x x x x - 0 5 4 L x x x x
9/125/900/1500/3000	2 7 4 - 0 0 0 - 0 0 6 L 0 0 0	2 7 4 - x x x x - 0 5 6 L x x x x

Connectors for other fiber and cable dimensions available upon request

MULTIMODE (with pins)

Type designation: **MT-RJ M0**
 Ferrule material: **Standard Mini MT**
 External parts: **Plastic Black**
 Polish geometry: **Convex (PC)**

Dimensions Fiber/Cable	Order Number	
	Unterminated connector	Terminated assembly
2 x 50/125/900/3000	2 7 0 - 0 0 0 - 0 0 4 L 0 0 0	2 7 0 - x x x x - 0 5 4 L x x x x
50/125/900/1500/3000	2 7 0 - 0 0 0 - 0 0 6 L 0 0 0	2 7 0 - x x x x - 0 5 6 L x x x x
2 x 62.5/125/900/3000	2 7 0 - 0 0 0 - 0 0 4 L 0 0 0	2 7 0 - x x x x - 0 6 4 L x x x x
62.5/125/900/1500/3000	2 7 0 - 0 0 0 - 0 0 6 L 0 0 0	2 7 0 - x x x x - 0 6 6 L x x x x

Connectors for other fiber and cable dimensions available upon request

MULTIMODE (without pins)

Type designation: **MT-RJ M0**

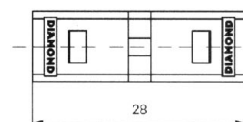
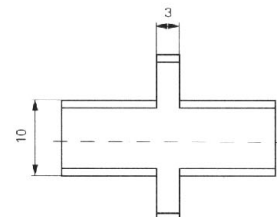
Dimensions Fiber/Cable	Order Number	
	Unterminated connector	Terminated assembly
2 x 50/125/900/3000	2 7 3 - 0 0 0 - 0 0 4 L 0 0 0	2 7 3 - x x x x - 0 5 4 L x x x x
50/125/900/1500/3000	2 7 3 - 0 0 0 - 0 0 6 L 0 0 0	2 7 3 - x x x x - 0 5 6 L x x x x
2 x 62.5/125/900/3000	2 7 3 - 0 0 0 - 0 0 4 L 0 0 0	2 7 3 - x x x x - 0 6 4 L x x x x
62.5/125/900/1500/3000	2 7 3 - 0 0 0 - 0 0 6 L 0 0 0	2 7 3 - x x x x - 0 6 6 L x x x x

Connectors for other fiber and cable dimensions available upon request

MATING ADAPTER MT-RJ

Type designation: **MMT-RJ**
 External parts: **Plastic**

Color	Order Number
blue (SM-PC)	1 4 2 - 3 0 6 - 9 0 1 V 0 0 3
black (MM)	1 4 2 - 3 0 6 - 9 0 1 V 0 0 2



Order Number Codes

- ¹ Connector code
- ² Connector code for termination on other end of assembly
 - For pigtails: insert 000
 - For patch assemblies: insert connector code for other connector
- ³ Code for fiber or cable
- ⁴ Length in meters. See ordering information for additional details