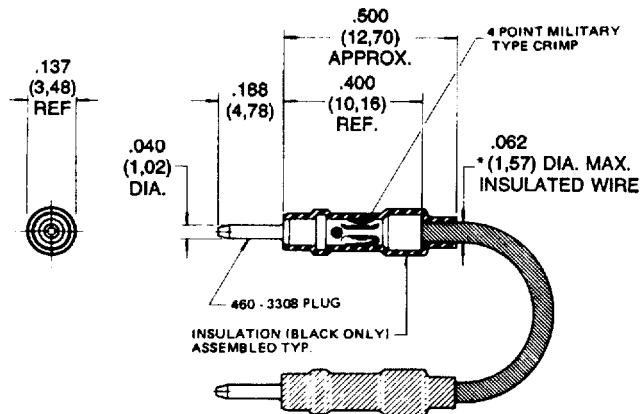


CONNECTOR ASSEMBLIES – patch cords

445-3306

.040 (1,02) Diameter Pins • Shrink-On Insulation



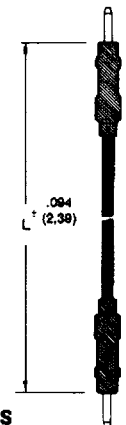
HOW TO ORDER CODE:

445-3306-XX-03-XX

Basic Part No. Plug Finish Wire Colour

Standard, others to order

ACTUAL SIZE



BASIC PART No.	L
-02	4.000 (101,60)
-03	6.000 (152,40)
445-3306 -04	8.000 (203,20)
-05	12.000 (304,80)

PLUG FINISH CODED DASH No.
-03 Gold

WIRE COLOUR CODED DASH NUMBERS	
-10	Black
-11	Brown
-12	Red
-13	Orange
-14	Yellow
-15	Green
-16	Blue
-17	Violet
-18	Grey
-19	White

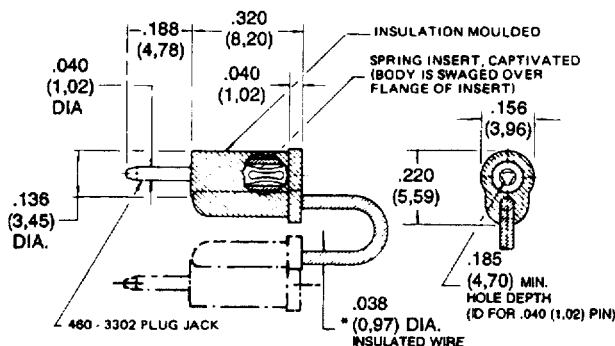
COMPONENT	MATERIAL	FINISH
Insulation	Polyolefin Plastic	—
Plug	Brass	Gold over Copper
Insulated Wire	Copper	Silver
Wire: Insulation	Teflon	—

*WIRE DATA REF. #20 AWG, 7 strand #28 AWG copper wire, Teflon insulated .062 (1,57) maximum diameter over insulation.

Tolerance unless otherwise stated ± .005 (0,13)

445-3705

.040 (1,02) Diameter Pins • Stackable • Moulded-On Insulation



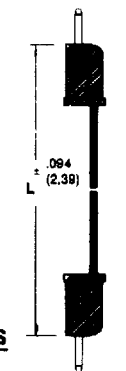
HOW TO ORDER CODE:

445-3705-XX-03-XX

Basic Part No. Plug-Jack Finish Insulation and Wire Colour

Standard, others to order

ACTUAL SIZE



BASIC PART No.	L
-01	2.000 (50,80)
-02	4.000 (101,60)
-03	6.000 (152,40)
445-3705 -04	8.000 (203,20)
-05	12.000 (304,80)
-06	18.000 (457,20)
-07	24.000 (609,60)

PLUG-JACK FINISH CODED DASH No.
-03 Gold

INSULATION AND WIRE COLOUR CODED DASH NUMBERS	
-10	Black
-11	Brown
-12	Red
-13	Orange
-14	Yellow
-15	Green
-16	Blue
-17	Violet
-18	Grey
-19	White

COMPONENT	MATERIAL	FINISH
Insulation	Moulded ABS Plastic	—
Plug-Jack: Body	Brass	Gold over Copper
Jack: Spring	Beryllium Copper (Heat Treated)	—
Insulated Wire	Copper	Tinned
Wire: Insulation	Vinyl	—

* WIRE DATA REF. #26 AWG, 19 strand #38 copper wire, vinyl insulated .041 (1,04) maximum diameter over insulation.

Teflon® is a registered trademark of DuPont

Tolerance unless otherwise stated ± .005 (0,13)