

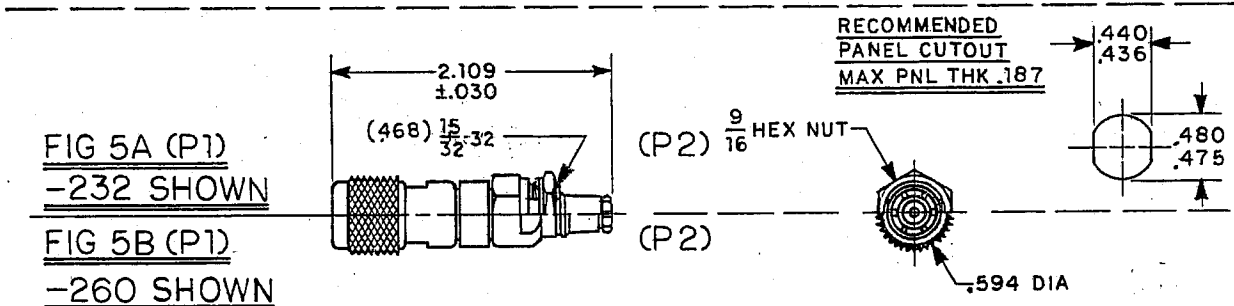
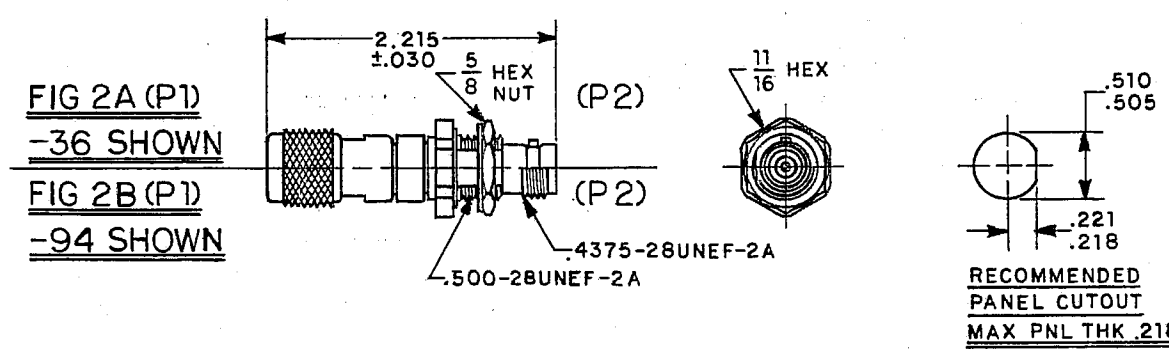
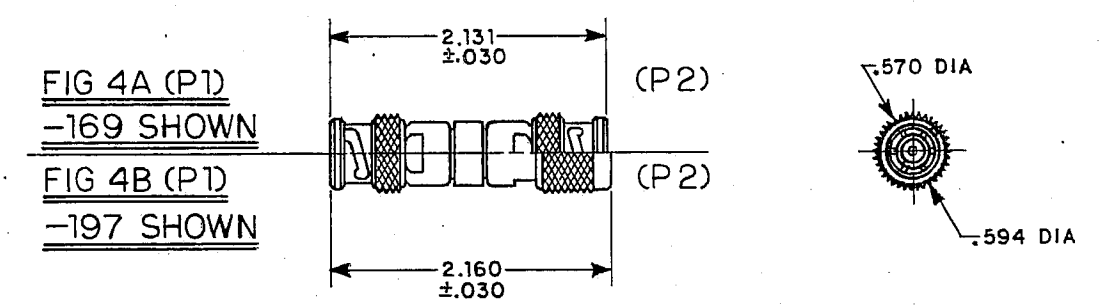
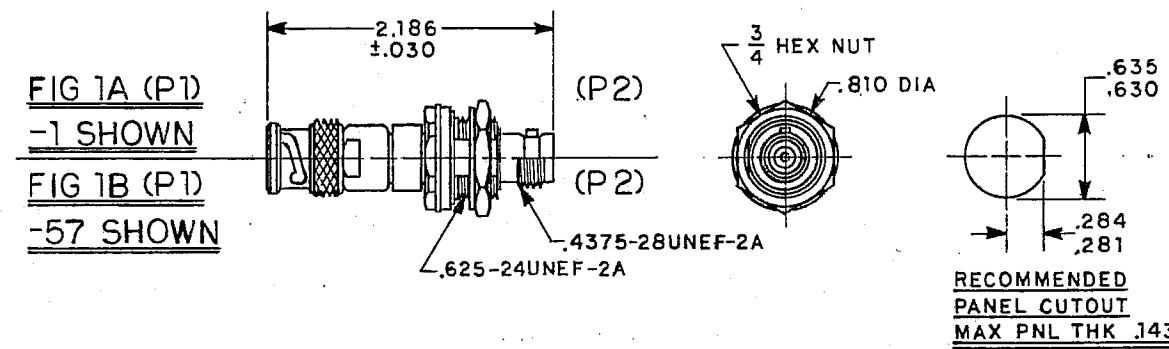
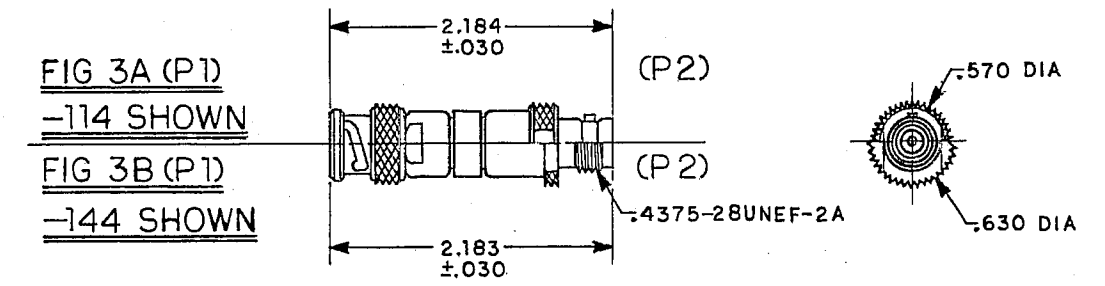
RED INDICATES ORIGINAL

P2 CONN TYPE	FIG NO	P1 CONN TYPE													
		PL30							PL330						
		SCHEMATICS													
DASH NUMBERS															
		D1	D2	D3	D4	D5	D6	D7	D1	D2	D3	D4	D5	D6	D7
BJ26	1A	-1	-2	-3	-4	-5	-6	-7	-8	-9	-10	-11	-12	-13	-14
UBJ26	1A	-15	-16	-17	-18	-19	-20	-21	-22	-23	-24	-25	-26	-27	-28
BJ29	2A	-29	-30	-31	-32	-33	-34	-35	-36	-37	-38	-39	-40	-41	-42
UBJ29	2A	-43	-44	-45	-46	-47	-48	-49	-50	-51	-52	-53	-54	-55	-56
BJ46	1B	-57	-58	-59	-60	-61	-62	-63	-64	-65	-66	-67	-68	-69	-70
UBJ46	1B	-71	-72	-73	-74	-75	-76	-77	-78	-79	-80	-81	-82	-83	-84
BJ49	2B	-85	-86	-87	-88	-89	-90	-91	-92	-93	-94	-95	-96	-97	-98
UBJ49	2B	-99	-100	-101	-102	-103	-104	-105	-106	-107	-108	-109	-110	-111	-112
CJ20	3A	-113	-114	-115	-116	-117	-118	-119	-120	-121	-122	-123	-124	-125	-126
UCJ20	3A	-127	-128	-129	-130	-131	-132	-133	-134	-135	-136	-137	-138	-139	-140
CJ40	3B	-141	-142	-143	-144	-145	-146	-147	-148	-149	-150	-151	-152	-153	-154
UCJ40	3B	-155	-156	-157	-158	-159	-160	-161	-162	-163	-164	-165	-166	-167	-168
PL20	4A	-169	-170	-171	-172	-173	-174	-175	-176	-177	-178	-179	-180	-181	-182
UPL20	4A	-183	-184	-185	-186	-187	-188	-189	-190	-191	-192	-193	-194	-195	-196
PL40	4B	-197	-198	-199	-200	-201	-202	-203	-204	-205	-206	-207	-208	-209	-210
UPL40	4B	-211	-212	-213	-214	-215	-216	-217	-218	-219	-220	-221	-222	-223	-224
PL122	5A	-225	-226	-227	-228	-229	-230	-231	-232	-233	-234	-235	-236	-237	-238
UPL122	5A	-239	-240	-241	-242	-243	-244	-245	-246	-247	-248	-249	-250	-251	-252
PL123	5B	-253	-254	-255	-256	-257	-258	-259	-260	-261	-262	-263	-264	-265	-266
UPL123	5B	-267	-268	-269	-270	-271	-272	-273	-274	-275	-276	-277	-278	-279	-280

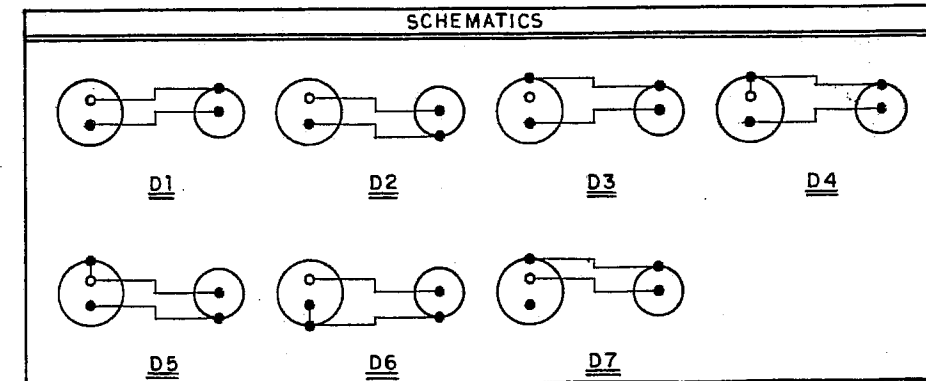
INCH	M M	INCH	M M
.005	0.13	.505	12.83
.030	0.76	.510	12.95
.143	3.63	.570	14.48
.187	4.75	.594	15.09
.218	5.54	.630	16.00
.221	5.61	.635	16.13
.281	7.14	.810	20.57
.284	7.21	2.106	53.49
.436	11.07	2.131	54.13
.440	11.18	2.160	54.86
.475	12.07	2.183	55.45
.480	12.19	2.184	55.47
		2.186	55.52
		2.215	56.26

DATA CONTAINED IN THIS DOCUMENT IS PROPRIETARY TO TROMPETER ELECTRONICS INC. AND SHALL NOT BE DISCLOSED, COPIED OR USED FOR PROCUREMENT OR MANUFACTURE WITHOUT EXPRESS WRITTEN PERMISSION.

REVISIONS			22-15	SH 1	
REV	EO	DESCRIPTION	DWN	APPROVED	DATE
A	7311	REV NOTE 4	FZ	<i>[Signature]</i>	12-16-86



- EXAMPLE OF COMPLETE MODEL NO:
AD-PL30-D1-BJ26
ADAPTER CONN P1 SCHEMATIC CONN P2
- EXAMPLE OF COMPLETE PART NO:
22-15-X
BASIC NO DASH NO
- BETWEEN SERIES ADAPTER; TWBNC, TWTNC
POLARIZED TWO PIN TWINAXIAL PLUG TO 50 & 75 OHM
COAXIAL BNC/TNC PLUG/JACK, INSULATED & NONINSULATED
BULKHEAD MOUNT JACK, PUSH ON PLUG & PUSH ON BULKHEAD
MOUNT JACK
- TFS-1A (NICKEL)
- ALL DIM ARE IN INCHES



QTY	DESCRIPTION	PART NUMBER	ITEM
TOL UNLESS SPECIFIED .XX ± .XXX ±.005 .XXXX ± ANGLES ±	TROMPETER ELECTRONICS, INC.	ADAPTERS, MALE TWO-PIN SERIES TO COMPLETE BNC/TNC SERIES	
DWN DKC 7-23-86	MATERIAL	CODE IDENT 14949	DRAWING NO. 22-15
CHK FZ 7-27-86			REV A
ENGR [Signature] 8-21-86	SCALE 1/1	DATE 8-25-86	SHEET 1 OF 2
APPR [Signature] 8-23-86			