

PLEASE CHECK WWW.MOLEX.COM FOR LATEST PART INFORMATION

Part Number: [0643251162](#)
Status: **Planned for Obsolescence**
Overview: [cmc connectors](#)
Description: 2.80mm (.110"), CMC Wire Seal Receptacle, Red

Documents:

[Drawing \(PDF\)](#) [RoHS Certificate of Compliance \(PDF\)](#)

General

Product Family	Crimp Terminals
Series	64325
Comments	For additional details please refer to Application Tooling Spec of Relevant CMC Connector.
Crimp Quality Equipment	Yes
Overview	cmc connectors
Product Name	CMC

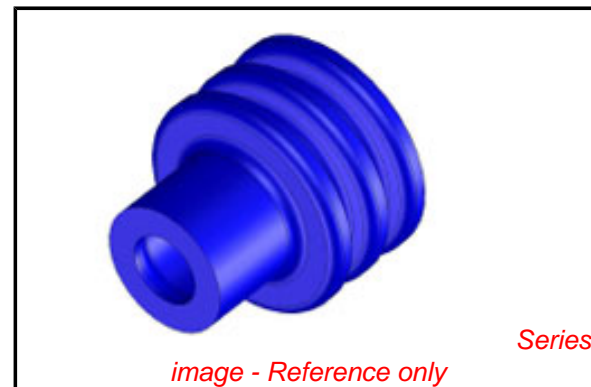
Physical

Gender	Receptacle
Material - Metal	N/A
Material - Plating Mating	n/a
Packaging Type	Carton
Termination Interface: Style	N/A
Wire Insulation Diameter	1.4mm - 2.15mm
Wire Size AWG	N/A
Wire Size mm ²	0.5 - 1.0

Material Info

Reference - Drawing Numbers

Sales Drawing	SD-64325-003
---------------	--------------



EU RoHS

ELV and RoHS Compliant
REACH SVHC
 Not Reviewed
Halogen-Free Status
 Not Reviewed

China RoHS



Need more information on product environmental compliance?

Email productcompliance@molex.com
 For a multiple part number RoHS Certificate of Compliance, [click here](#)

Please visit the [Contact Us](#) section for any non-product compliance questions.

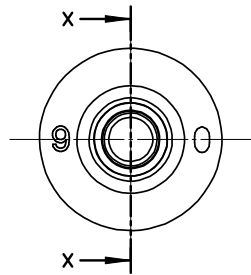
Search Parts in this Series

[64325Series](#)

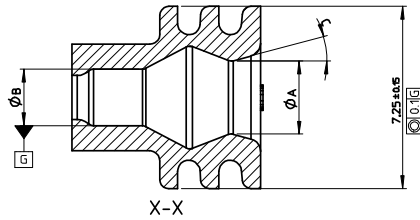
Mates With

Use With

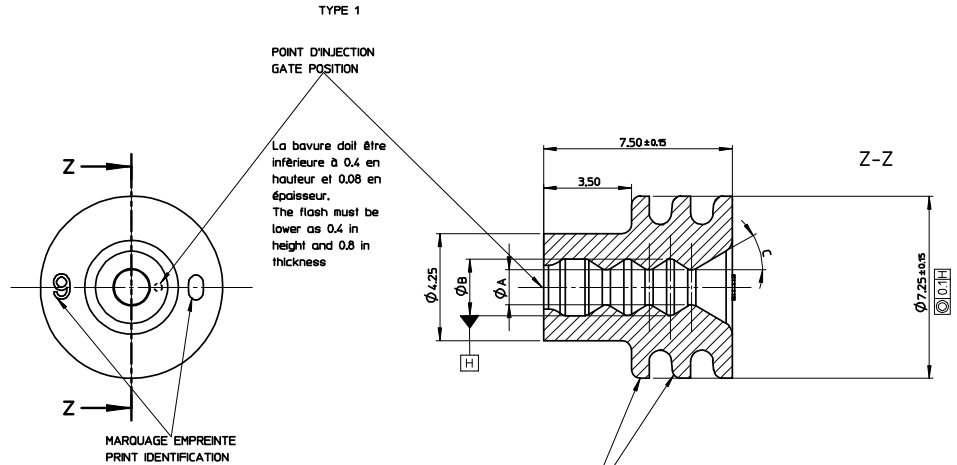
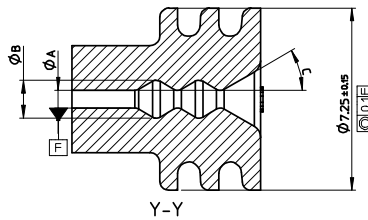
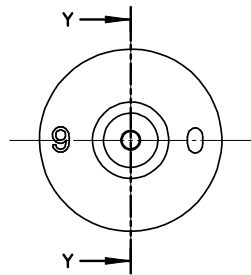
[64324](#) CMC CP Terminals



TYPE 2



TYPE 3



N°90 représenté : sens de lecture en liaison avec la position du point d'injection
 chiffre : hauteur 1 +0.2/0 en relief , épaisseur 0.1 +0.1/0
 N°90 represented : reading direction in liaison with the gate position
 Number : height 1 +0.2/0 embossed, thickness 0.1 +0.1/0

Les lèvres du joint doivent être exemptes de bavures, coupures, marque matière, déformations ...
 No flash, no cut, no less material, no deformation on seal lips

SPECIFICATION MATIERE : Silicone lubrifié 4%

- * température mini d'utilisation : -40°C
- * dureté à l'état initial : 50 ± 5 Shore A
- après vieillissement à la chaleur : (70 heures à 232°C) : 55 ± 10 Shore A
- après vieillissement aux solvants : (ASTM#3oil) (70 heures à 149°C) : 25 points d'écart maxi

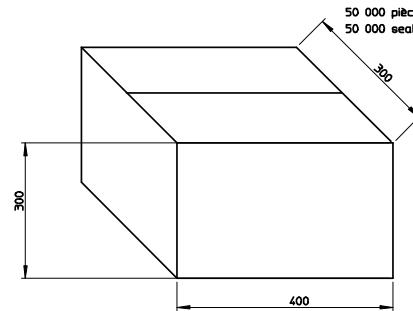
augmentation du volume 50% maxi
 * compression set (ASTM D 395/B) 22 heures à 177°C : 50% maxi
 * résistance au déchirement (ASTM D 624/B) 14 KN/M

MATERIAL SPECIFICATION : Silicon lubricated 4%

- * mini temperature for use : -40°C
- * initial state hardness : 50 ± 5 Shore A
- after ageing with heat : (70 hours at 232°C) : 55 ± 10 Shore A
- after ageing with solvents : (ASTM#3oil) (70 hours at 149°C) : 25 points in difference max

volume increase 50% max
 * compression set (ASTM D 395/B) 22 hours to 177°C : 50% max
 * tearing resistance (ASTM D 624/B) 14KN/M

CONDITIONNEMENT LIVRAISON EN VRAC / LOOSE PACKAGING



50 000 pièces (2 sacs de 25 000 p.) / carton
 50 000 seals (2 bags of 25 000 seals) / cardboard
 CODE EMBALLAGE : GALIA A12
 PACKAGING CODE : GALIA A12

REFERENCE MOLEX	COULEUR	TYPE	Ø CABLE ADMIS	POIDS CALCULÉ (g)	Ø A	Ø B	C
0643251196	BLEU / BLUE	2	3.40/4.00	0.132	3.35/3.65	2.85/3.15	20
0643251188	GRIS/GREY	2	2.65/3.45	0.151	2.75/3.05	2.25/2.55	15
0643251175	VERT/GREEN	1	2.10/2.80	0.168	1.40/1.70	2.25/2.55	30
0643251162	ROUGE/RED	3	1.40/2.15	0.189	0.70/1.00	1.50/1.80	30

FIRST RELEASE EC NO: GZ008-0463 DRAWN BY: JAUOU CHKD BY: BOUGHAN APPRVL: LELER 2008/05/16 2008/05/16 2008/05/16	GENERAL TOLERANCES (UNLESS SPECIFIED)	DIMENSION STYLE MM ONLY	SCALE 10:1	DESIGN UNITS METRIC	FIRST ANGLE PROJECTION	
	4 PLACES ± --- ± --- 3 PLACES ± --- ± --- 2 PLACES ± --- ± --- 1 PLACE ± 0.1 ± --- ANGULAR ± 2 °	DRAWN BY: VGUERIN DATE: 2007/07/12 CHECKED BY: FPAROLARI DATE: 2007/07/12 APPROVED BY: LSTICKEI DATE: 2007/07/13	TITLE SINGLE WIRE SEAL FOR CP 2.8 TERMINAL			
	DRAFT WHERE APPLICABLE MUST REMAIN WITHIN DIMENSIONS		SEE CHART		MOLEX INCORPORATED	
	MATERIAL NO.		DOCUMENT NO.		SHEET NO.	