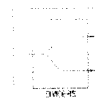
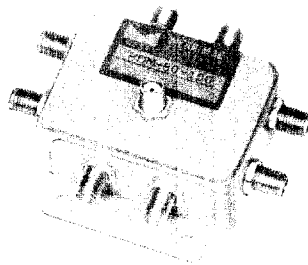


PDM-80 Series

POWER DIVIDERS / COMBINERS

1 to 500 MHz / 8-Way / Lumped Element / Half-Wave Phase & Amp. Bal. / Low Insertion Loss / SMA



PRINCIPAL SPECIFICATIONS

Model Number	Frequency Range, MHz	Freq. Perform., MHz	Isolation, dB		Insertion Loss, dB		Phase Balance, °		Amplitude Balance, dB		VSWR Max. Input/Output	†Input Power, Max.
			Min.	Typ.	Max.	Typ.	Max.	Typ.	Max.	Typ.		
PDM-80-100	1 - 200	1 - 100	28	30	1.0	0.8	5°	2°	0.5	0.2	1.35:1/1.2:1	3 W
		100 - 200	20	25	2.0	1.5	8°	4°	0.6	0.3	1.5:1/1.3:1	
PDM-80-275	50 - 500	50 - 500	25	30	1.7	1.3	5°	3°	0.5	0.3	1.35:1/1.2:1	3 W

†CW input power when used as divider with 1.2:1 VSWR_{out}

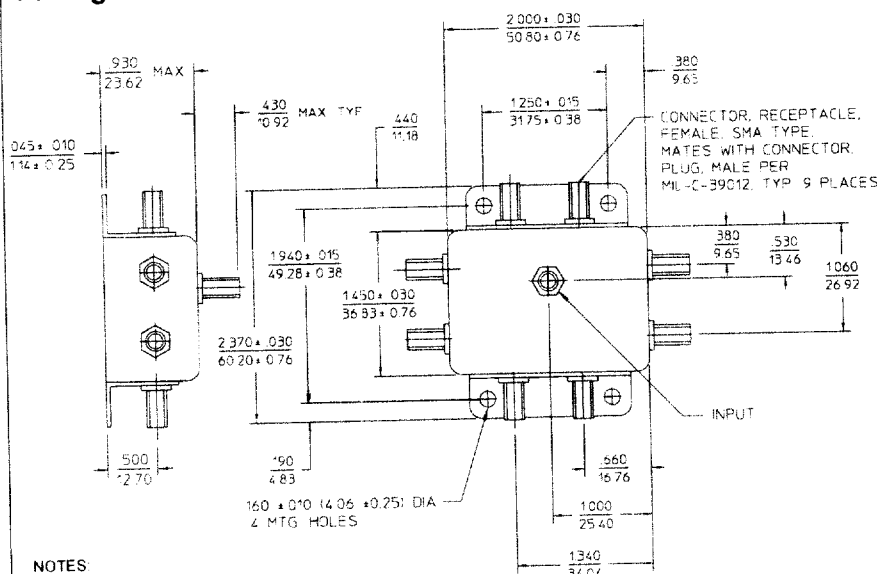
General Notes:

- The PDM-80 series of 8-way Power Divider/Combiners cover 1 to 500 MHz using a special lumped element design for minimum insertion loss. This unit is especially applicable where overall space is limited.
- This unit complies with MIL-P-23971 and can be supplied screened for compliance with additional specifications for military and space applications requiring the highest reliability.

GENERAL SPECIFICATIONS

Coupling:	- 9 dB nom.
Impedance:	50 Ω nom.
Internal Load Dissipation:	250 mW max.
Weight, nominal:	2.6 oz. (73 g)
Operating Temperature:	- 55° to +85°C

Package Outline



NOTES

- Tolerance on 3 place decimals ± 0.20(51) except as noted.
- Dimensions in inches over millimeters.

