

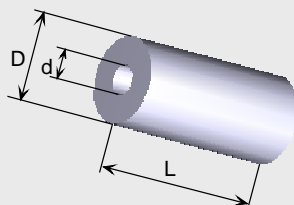
AVM406A - Automatic Winding Machine for Metallized Film Capacitors



MAIN FEATURES

- Possibility of winding 2 capacitors each cycle.
- Two winding stations independently motor driven.
- Split mandrels.
- A constant staggering is assured by using air guides.
- Double burn-off system.
- Initial turns stiffened by heater.
- Turns control mode of the winding independently set on each capacitor.

PRODUCT



GENERAL INFORMATION

Dimensions of wound capacitive element

d	2	to	8	mm
D	3.5	to	28	mm
L	10	to	27.5	mm (double winding)