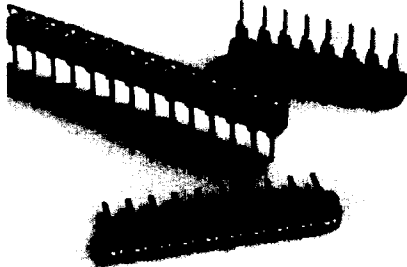


Features

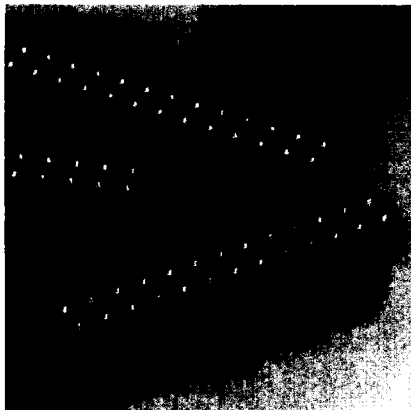
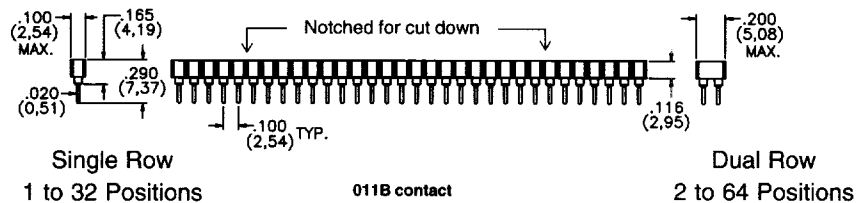
- Hi-Temp Options — IR and Vapor Phase Compatible
- X and Y Stackable
- Disposable Plastic Pin Carrier (PPC™) System Option
- Hi-Rel multifinger contact
- Insulators are notched for convenient cut down



Single Row SIP Sockets

STANDARD TEMPERATURE GLASS REINFORCED THERMOPLASTIC

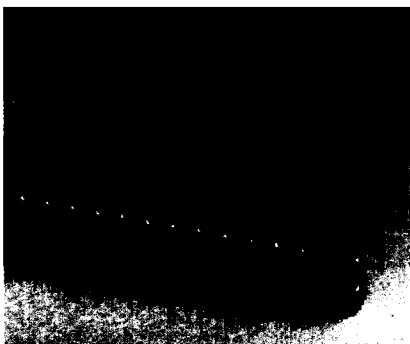
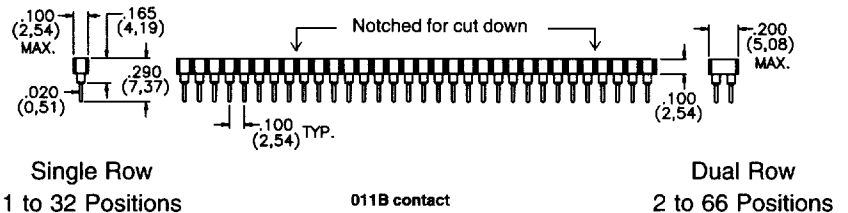
Continuous use temperature 140°C



Dual Row SIP Sockets

HI-TEMP PPS GLASS REINFORCED THERMOPLASTIC

Continuous use temperature 220°C

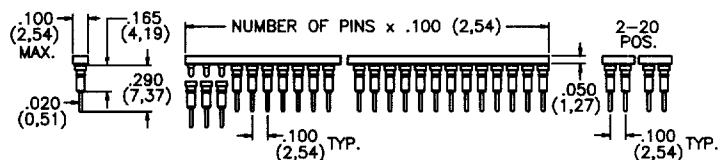


PPC™ SIP Sockets
(disposable carrier system)

Patent No. 4,420,877

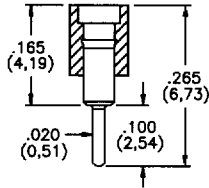
PLASTIC PIN CARRIER (PPC™) SYSTEM

Patent #4,420,877

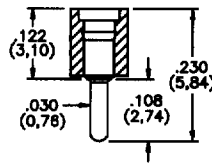


Insulators are all UL 94V-0 Rated Thermoplastic

SHORTER SOLDER TAIL — NO TRIMMING

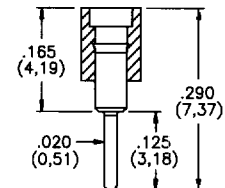


Specify Contact/Shell
018B 200 μ " Tin/200 μ " Tin
PTH = .026 \pm .003



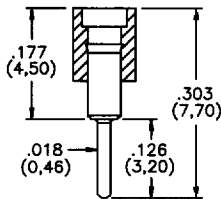
Specify Contact/Shell
185B 30 μ " Gold/200 μ " Tin
PTH = .036 \pm .003

OUR MOST POPULAR CONTACT

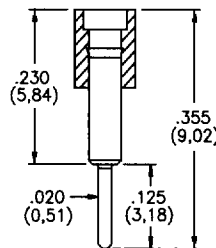


Specify Contact/Shell
001B 30 μ " Gold/200 μ " Tin
002B 30 μ " Gold/10 μ " Gold
011B 10 μ " Gold/200 μ " Tin
014B 200 μ " Tin/200 μ " Tin
016B* 30 μ " Gold/200 μ " Tin
PTH = .026 \pm .003
**CLINCHABLE SOFT BRASS*

HIGHER PCB STANDOFF

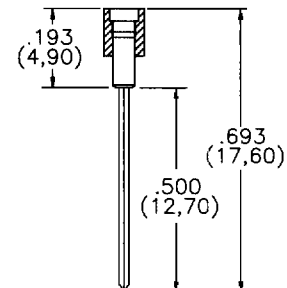


Specify Contact/Shell
248B 30 μ " Gold/10 μ " Gold
PTH = .024 \pm .003



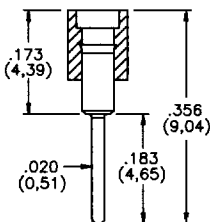
Specify Contact/Shell
040B 30 μ " Gold/10 μ " Gold
041B 30 μ " Gold/200 μ " Tin
PTH = .026 \pm .003

WIRE WRAP™ SIPs

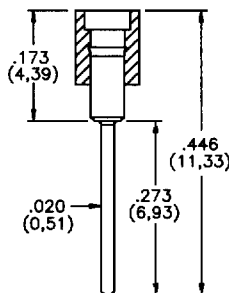


Specify Contact/Shell
410B 30 μ " Gold/200 μ " Tin
411B 30 μ " Gold/10 μ " Gold

EXTRA LONG SOLDER TAILS



Specify Contact/Shell
057B 200 μ " Tin/200 μ " Tin
054B 30 μ " Gold/200 μ " Tin
091B 30 μ " Gold/10 μ " Gold
PTH = .026 \pm .003



Specify Contact/Shell
067B 30 μ " Gold/200 μ " Tin
113B 30 μ " Gold/10 μ " Gold
PTH = .026 \pm .003

How To Order

PPC SIP - 1 x 32 - 011B - R

For pins on a carrier strip begin the part number with "PPC™" or HPC for Hi-Temp Material

Product Code

Number of Rows

Number of Contacts per Row

Contact Style

Hi-Temp Material Call Out (Option)*

Contact/Shell:

Outer Shell — 1/2 Hard Brass
 Inner Contact — Beryllium Copper

Plating:

Outer Shell—Gold over 100 μ " Nickel or Tin over 100 μ " Nickel
 Inner Contact — Gold over Nickel or Tin over Nickel

Other contact and plating styles available, see Section A or consult the factory

***See page B1 for Material Call Outs**