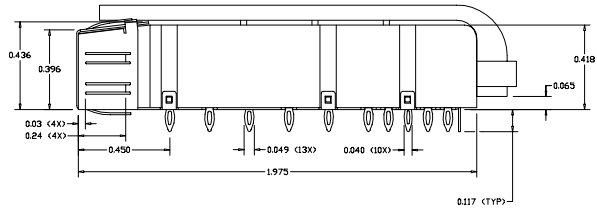
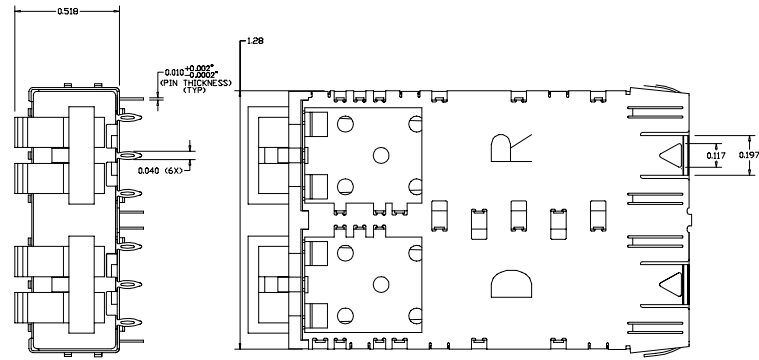
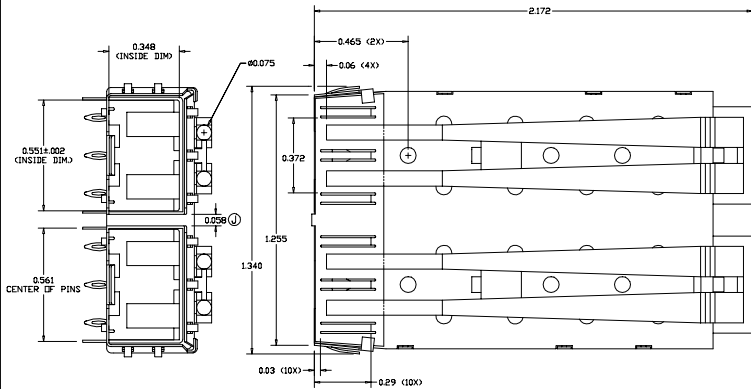


PREVIOUS REVISIONS			
1	ISSUED DRAWING	08/27/02	AP
2	ISSUED DRAWING	08/27/02	AP
3	ISSUED DRAWING	10/24/04	AP
4	ISSUED DRAWING	10/24/04	AP
5	ISSUED DRAWING	10/24/04	AP
6	ISSUED DRAWING	10/24/04	AP
7	ISSUED DRAWING	10/24/04	AP
8	ISSUED DRAWING	10/24/04	AP
9	ISSUED DRAWING	10/24/04	AP
10	ISSUED DRAWING	10/24/04	AP
11	ISSUED DRAWING	10/24/04	AP
12	ISSUED DRAWING	10/24/04	AP
13	ISSUED DRAWING	10/24/04	AP
14	ISSUED DRAWING	10/24/04	AP
15	ISSUED DRAWING	10/24/04	AP
16	ISSUED DRAWING	10/24/04	AP
17	ISSUED DRAWING	10/24/04	AP
18	ISSUED DRAWING	10/24/04	AP
19	ISSUED DRAWING	10/24/04	AP
20	ISSUED DRAWING	10/24/04	AP
21	ISSUED DRAWING	10/24/04	AP
22	ISSUED DRAWING	10/24/04	AP
23	ISSUED DRAWING	10/24/04	AP
24	ISSUED DRAWING	10/24/04	AP
25	ISSUED DRAWING	10/24/04	AP
26	ISSUED DRAWING	10/24/04	AP
27	ISSUED DRAWING	10/24/04	AP
28	ISSUED DRAWING	10/24/04	AP
29	ISSUED DRAWING	10/24/04	AP
30	ISSUED DRAWING	10/24/04	AP
31	ISSUED DRAWING	10/24/04	AP
32	ISSUED DRAWING	10/24/04	AP
33	ISSUED DRAWING	10/24/04	AP
34	ISSUED DRAWING	10/24/04	AP
35	ISSUED DRAWING	10/24/04	AP
36	ISSUED DRAWING	10/24/04	AP
37	ISSUED DRAWING	10/24/04	AP
38	ISSUED DRAWING	10/24/04	AP
39	ISSUED DRAWING	10/24/04	AP
40	ISSUED DRAWING	10/24/04	AP
41	ISSUED DRAWING	10/24/04	AP
42	ISSUED DRAWING	10/24/04	AP
43	ISSUED DRAWING	10/24/04	AP
44	ISSUED DRAWING	10/24/04	AP
45	ISSUED DRAWING	10/24/04	AP
46	ISSUED DRAWING	10/24/04	AP
47	ISSUED DRAWING	10/24/04	AP
48	ISSUED DRAWING	10/24/04	AP
49	ISSUED DRAWING	10/24/04	AP
50	ISSUED DRAWING	10/24/04	AP

REVISION AND CHANGE EFFECTIVITY DATE				
LTR.	ECN	DESCRIPTION	DATE	APP'D.
J	EC1539	DECREASED WIDTH ON CENTER DIMMER ON STAMPED PIECE	07/18/07	AP



**PLATING OPTIONS:**

- R FOR 100µIN MATTE TIN OVER 50µIN NICKEL  
NOT INTENDED FOR REFLOW  
WAVE SOLDER ONLY - WAVE TEMP. 260°C FOR 6 SEC. MAX  
RoHS COMPLIANT
- G FOR FLASH GOLD OVER 50µIN NICKEL  
WITH LIGHTPIPE; NOT INTENDED FOR REFLOW  
WAVE SOLDER ONLY - WAVE TEMP. 260°C FOR 6 SEC. MAX  
WITHOUT LIGHTPIPE; CAGE IS REFLOW COMPATIBLE  
MAX REFLOW TEMP. 260°C  
RoHS COMPLIANT
- N FOR 100µIN NICKEL  
WITH LIGHTPIPE; NOT INTENDED FOR REFLOW  
WAVE SOLDER ONLY - WAVE TEMP. 260°C FOR 6 SEC. MAX  
WITHOUT LIGHTPIPE; CAGE IS REFLOW COMPATIBLE  
MAX REFLOW TEMP. 260°C  
RoHS COMPLIANT

**ORDERING INFO:**  
DM7040-2-X-Y  
SERIES

NUMBER OF PORTS  
L - WITH LIGHT PIPES INSTALLED (2 PAIRS)  
BLANK (OMIT) - WITHOUT LIGHTPIPES

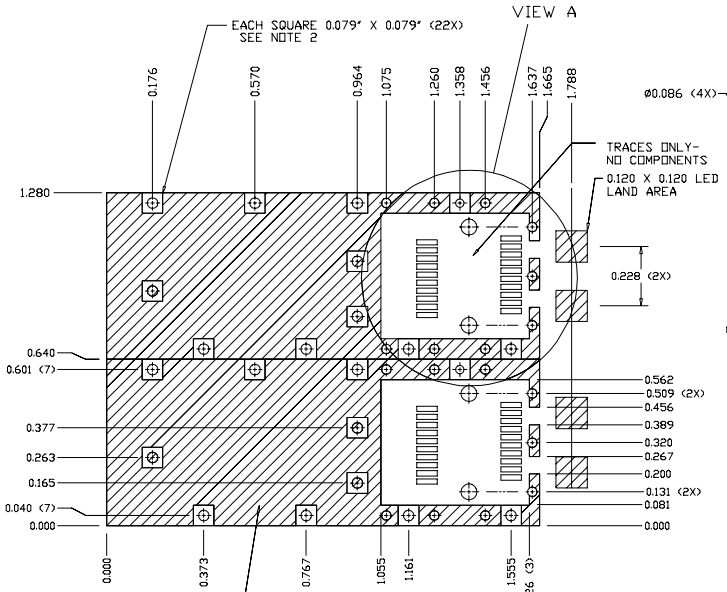
**MATERIAL AND FINISH:**

- 1) HOUSING: ZINC DIE CAST - SEE ORDERING INFO FOR PLATING OPTIONS
- 2) BOTTOM SHIELD: .010" THICK BRASS, FULL HARD. - SEE ORDERING INFO FOR PLATING OPTIONS  
TOLERANCE: +0.002"/-0.0002" (INCLUDING PINS AND GROUNDING TABS)
- 3) LIGHT PIPE: CLEAR POLYCARBONATE - NOT INTENDED FOR REFLOW - WAVE SOLDER ONLY
- 4) SHOWN WITH LIGHTPIPES
- 5) CAGE IS STAMPED 'R' FOR RoHS COMPLIANCE
- 6) OPERATING AND STORAGE TEMPERATURE: -40°C TO +160°C W/OUT LIGHTPIPE, +125°C WITH LIGHTPIPE
- 7) TEMPERATURE FROM WAVE SOLDER NOT TO EXCEED 125°C AT LIGHTPIPE

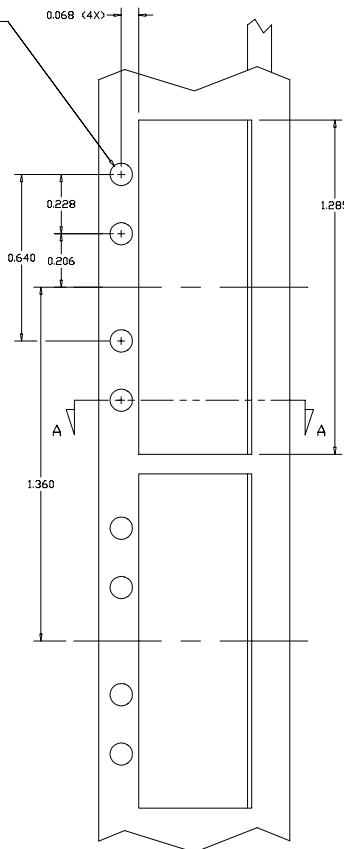
EXPERIMENTAL NO:		DIVISION ASSIGNED:	
DO NOT SCALE DRAWING.		dataMate Division	
TOLERANCE UNLESS OTHERWISE SPECIFIED		DRAWN BY: B. SKEPNEK 12/13/02	
MATERIAL: SEE NOTES		CHECKED BY: T. LEGITTIMO 12/13/02	
METRIC ± FRACTIONS ± DEC ± ANGLES ±		ENGR. APPROVAL: A. PIRILLI 12/13/02	
TOOLING DWG □ PART DWG □ BREAK SHARP EDGES REMOVE ALL BURRS		APPROVED BY: J. DALY 12/13/02	
THE INFORMATION DISCLOSED IN THIS DOCUMENT IS PROPRIETARY TO METHODE ELECTRONICS, INC. AND MAY NOT BE USED FOR MANUFACTURE OR ANY OTHER PURPOSE WITHOUT THE WRITTEN CONSENT OF METHODE. DETAILS SUBJECT TO CHANGE AS THEY MAY CHANGE WITH RESPECT TO PRODUCT IMPROVEMENT.		TITLE: SFP EMI CAGE 2 PORT MODULE	
PART NO. CLASSIFICATION:		SIZE: C	CODE IDENT.
		DWG. NUMBER: DM7040-2-X	
		Rev. J	
		SCALE:	
		SHT. 1 OF 2	



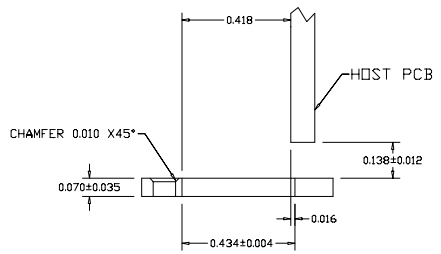
REVISION AND CHANGE EFFECTIVITY DATE				
LTR.	ECN	DESCRIPTION	DATE	APP'D.
J	EC1539	DECREASED WIDTH ON CENTER DIVDER ON STAMPED PIECE	07/18/07	AP



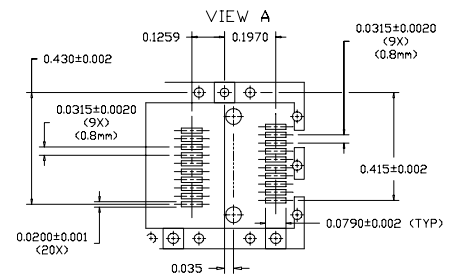
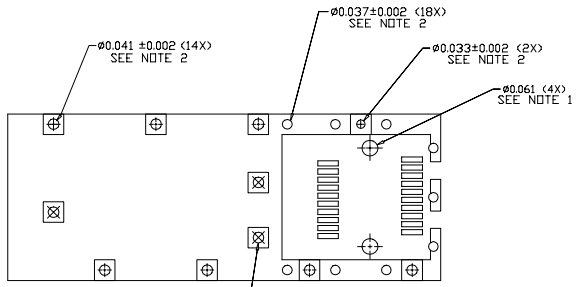
RECOMMENDED PANEL CUTOUT



SECTION A-A



NO COMPONENTS  
NO TRACES  
(EXCEPT CHASSIS GROUND)



- NOTES:
- 1) THRU HOLES, PLATING OPTIONAL
  - 2) PADS AND VIAS ARE CHASSIS GROUND, 40 PLACES

DO NOT SCALE DRAWING.		EXPERIMENTAL NO:		DIVISION ASSIGNED: <b>dataMATE Division</b>	
TOLERANCE UNLESS OTHERWISE SPECIFIED		MATERIAL:		DRAWN BY: DATE	
METRIC INCHES		SEE NOTES		B. SKEPNEK 12/13/02	
FRACTIONS DEC. XX ± .010 XXX ± .006		FINISH:		CHECKED BY: T. LEGITTIMO 12/13/02	
ANGLES ±		TOOLING DWG □		ENGR. APPROVAL: A. PIRILLIS 12/13/02	
PART DWG □		BREATH SHARP EDGES		APPROVED BY: J. DALY 12/13/02	
REMOVE ALL BURRS		PART NO. CLASSIFICATION:		TITLE SFP EMI CAGE 2 PORT MODULE WITH LIGHTPIPES (RECOMMENDED FOOTPRINT)	
THE INFORMATION DISCLOSED IN THIS DOCUMENT IS PROPRIETARY TO METHODE ELECTRONICS, INC. AND MAY NOT BE USED FOR MANUFACTURE OR ANY OTHER PURPOSE WITHOUT THE WRITTEN CONSENT OF METHODE ELECTRONICS, INC. CHANGES TO THIS DOCUMENT SHALL BE SUBJECT TO CHANGE AS THEY MAY OCCUR WITH RESPECT TO PRODUCT IMPROVEMENT.		SIZE C		CODE IDENT. DWG. NUMBER DM7040-2-X	
SCALE:		Rev. J		Shi. 2 Of 2	