

American Fuses Cable Protectors CP & CPH



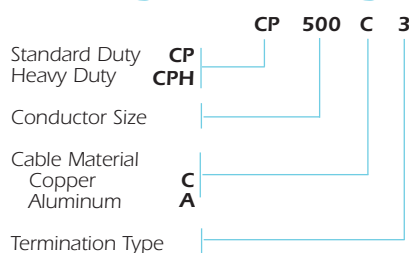
Ferraz Shawmut CP Cable Protectors are special purpose limiters which are crimped or bolted to cables to clear and isolate faults quickly, increasing the reliability of service entrance and distribution runs. They are current limiting with a 200,000A interrupting rating, yet will carry low cable overloads which are handled by standard protective devices. Cable Protectors are rated in terms of cable size and material (Al or Cu). Heavier duty CPH Cable Protectors are available on special order. Heat shrinkable (HS) tubing can be specified for field installation. Refer to the Application Information Section for more information.

Reference Numbers

Description			Copper		Aluminium	
Type	Termination	Cable size*	Catalog Number	Reference Number	Catalog Number	Reference Number
1	Cable to cable	2	CP2C1	E217814	-	-
		1/0	CP1/0C1	B200883	-	-
		2/0	CP2/0C1	AZ01940	-	-
		4/0	CP4/0C1	Y214243	CP4/0A1	N212716
		250kcmil	CP250C1	X213230	CP250A1	R211684
		350kcmil	CP350C1	W223096	CP350A1	C218847
		500kcmil	CP500C1	D200885	CP500A1	D218848
		750kcmil	CP750C1	M216280	CP750A1	A212198
3	Cable to offset bus	2	CP2C3	Q218330	-	-
		1/0	CP1/0C3	N201423	-	-
		2/0	CP2/0C3	Y211161	-	-
		4/0	CP4/0C3	E215261	CP4/0A3	Y213231
		250kcmil	CP250C3	X214242	CP250A3	X212195
		350kcmil	CP350C3	P201424	CP350A3	R219366
		400kcmil	CP400C3	R218331	-	-
		500kcmil	CP500C3	T211686	CP500A3	S219367
750kcmil	CP750C3	D217307	CP750A3	A214245		
5	Straight bus to offset bus	4/0	CP4/0C5	K216278	CP4/0C5	K216278
		250kcmil	CP250C5	Z214750	CP250C5	Z214750
		350kcmil	CP350C5	Z211162	CP350C5	Z211162
		500kcmil	CP500C5	Z214244	CP500C5	Z214244
		750kcmil	CP750C5	T218333	CP750C5	T218333
6	Mole to cable	4/0	CP4/0C6	B217305	CP4/0A6	P213729
		250kcmil	CP250C6	E215767	CP250A6	M212715
		350kcmil	CP350C6	S211685	CP350A6	E222575
		500kcmil	CP500C6	F215262	CP500A6	F222576
		750kcmil	CP750C6	F218850	CP750A6	G215769
8	Mole to offset bus	4/0	CP4/0C8	F217815	CP4/0C8	F217815
		250kcmil	CP250C8	K216784	CP250C8	K216784
		350kcmil	CP350C8	Y212196	CP350C8	Y212196
		500kcmil	CP500C8	L216279	CP500C8	L216279
		750kcmil	CP750C8	V219369	CP750C8	V219369

* kcmil = MCM

Catalog Numbering System



Approvals

- Ferraz Shawmut Certified

Features/Benefits

- Fiberglass bodies for dimensional stability in harsh environments
- Catalog number stamped into terminal for permanent identification
- Crimp terminals for aluminum cable include oxide inhibitor
- Molded rubber boots or heat shrinkable tubing available for insulation and protection

Ratings

- Sizes: #2 to 750kcmil copper
4/0 to 750kcmil aluminium
600VAC, 200kA I.R.

Special Purpose Fuses

American Fuses Cable Protectors CP & CPH

Type C1 - Dimensions

Catalog Number	Reference Number	Cable* size	Dimensions-Inches (mm)					
			A	B	D	E	J	N
CP2C1	E217814	#2	7.12 (180)	1.44 (37)	.42 (11)	1.75 (44)	3.62 (92)	.31 (7.9)
CP1/OC1	B200883	1/0	7.12 (180)	1.44 (37)	.52 (13)	1.75 (44)	3.62 (92)	.39 (9.9)
CP2/OC1	A201940	2/0	7.12 (180)	1.44 (37)	.56 (14)	1.75 (44)	3.62 (92)	.44 (11)
CP4/OC1	Y214243	4/0	7.12 (180)	1.44 (37)	.68 (17)	1.75 (44)	3.62 (92)	.55 (14)
CP250C1	X213230	250kcmil	7.38 (188)	1.44 (37)	.75 (19)	1.88 (48)	3.62 (92)	.62 (16)
CP350C1	W223096	350kcmil	7.62 (194)	1.62 (41)	.88 (22)	2.00 (51)	3.62 (92)	.71 (18)
CP500C1	D200885	500kcmil	9.38 (238)	1.88 (48)	1.05 (27)	2.88 (73)	3.62 (92)	.85 (22)
CP750C1	M216280	750kcmil	9.51 (242)	2.50 (64)	1.32 (34)	2.88 (73)	3.75 (95)	1.06 (27)

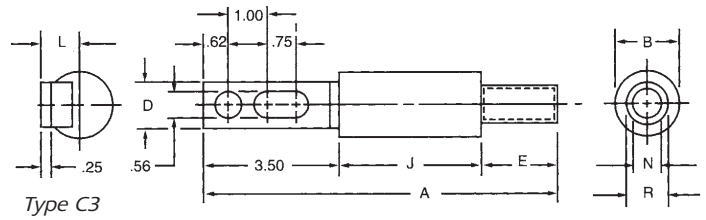
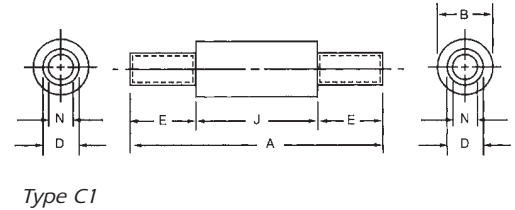
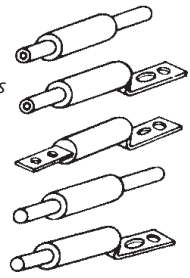
TYPE 1 - Cable to cable

TYPE 3 - Cable to offset bus

TYPE 5 - Bus to offset bus

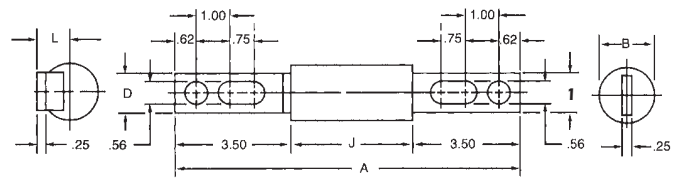
TYPE 6 - Mole to cable

TYPE 8 - Mole to offset bus



Type C3 - Dimensions

Catalog Number	Reference Number	Cable* size	Dimensions-Inches (mm)							
			A	B	D	E	J	L	N	R
CP2C3	Q218330	#2	8.87 (225)	1.44 (37)	1.12 (28)	1.75 (44)	3.62 (92)	.96 (24)	.31 (7.9)	.42 (11)
CP1/OC3	N201423	1/0	8.87 (225)	1.44 (37)	1.12 (28)	1.75 (44)	3.62 (92)	.96 (24)	.39 (9.9)	.52 (13)
CP2/OC3	Y211161	2/0	8.87 (225)	1.44 (37)	1.12 (28)	1.75 (44)	3.62 (92)	.96 (24)	.44 (11)	.56 (14)
CP4/OC3	E215261	4/0	8.87 (225)	1.44 (37)	1.12 (28)	1.75 (44)	3.62 (92)	.96 (24)	.55 (14)	.68 (17)
CP250C3	X214242	250kcmil	9.00 (229)	1.44 (37)	1.12 (28)	1.88 (48)	3.62 (92)	.96 (24)	.62 (16)	.75 (19)
CP350C3	P201424	350kcmil	9.12 (232)	1.62 (41)	1.12 (28)	2.00 (51)	3.62 (92)	.96 (24)	.71 (18)	.88 (22)
CP400C3	R218331	400kcmil	9.12 (232)	1.62 (41)	1.12 (28)	2.00 (51)	3.62 (92)	.96 (24)	.75 (19)	.88 (22)
CP500C3	T211686	500kcmil	10.00 (254)	1.88 (48)	1.62 (41)	2.88 (73)	3.62 (92)	1.19 (30)	.85 (22)	1.05 (27)
CP750C3	D217307	750kcmil	10.13 (257)	2.50 (64)	2.00 (51)	2.88 (73)	3.75 (95)	1.31 (33)	1.06 (27)	1.32 (34)

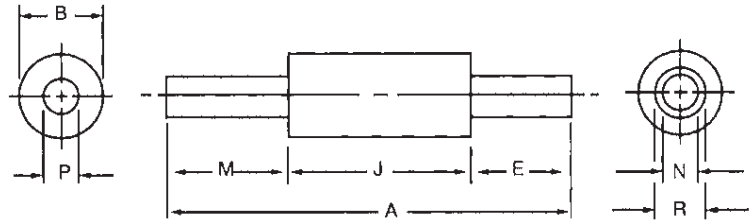


Type C5 - Dimensions

Catalog Number	Reference Number	Cable* size	Dimensions-Inches (mm)					
			A	B	D	J	L	M
CP4/OC5	K216278	4/0	10.37 (263)	1.44 (37)	1.12 (28)	3.62 (92)	.96 (24)	1.12 (28)
CP250C5	Z214750	250kcmil	10.37 (263)	1.44 (37)	1.12 (28)	3.62 (92)	.96 (24)	1.12 (28)
CP350C5	Z211162	350kcmil	10.37 (263)	1.62 (41)	1.12 (28)	3.62 (92)	.96 (24)	1.12 (28)
CP500C5	Z214244	500kcmil	10.37 (263)	1.88 (48)	1.62 (41)	3.62 (92)	1.19 (30)	1.50 (38)
CP750C5	T218333	750kcmil	10.50 (267)	2.50 (64)	2.00 (51)	3.75 (95)	1.31 (33)	2.00 (51)

* kcmil = MCM

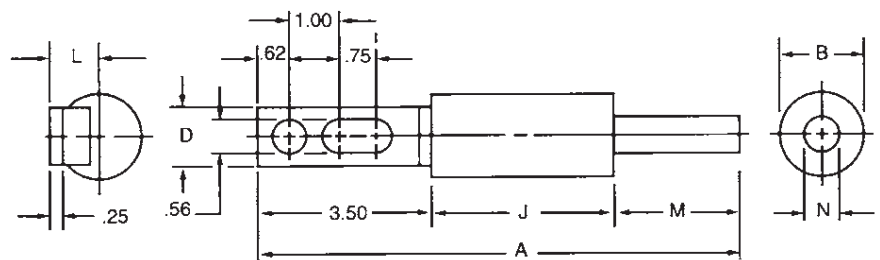
American Fuses Cable Protectors CP & CPH



Type C6

Type C6 - Dimensions

Catalog Number	Reference Number	Cable* size	Dimensions-Inches (mm)							
			A	B	E	J	M	N	P	R
CP4/OC6	B217305	4/0	7.87 (200)	1.44 (37)	1.75 (44)	3.62 (92)	2.50 (64)	.55 (14)	.52 (13)	.68 (17)
CP250C6	E215767	250kcmil	8.00 (203)	1.44 (37)	1.88 (48)	3.62 (92)	2.50 (64)	.62 (16)	.58 (14)	.75 (19)
CP350C6	S211685	350kcmil	8.12 (206)	1.62 (41)	2.00 (51)	3.62 (92)	2.50 (64)	.71 (18)	.68 (17)	.88 (22)
CP500C6	F215262	500kcmil	9.38 (238)	1.88 (48)	2.88 (73)	3.62 (92)	2.88 (73)	.85 (22)	.81 (21)	1.05 (27)
CP750C6	F218850	750kcmil	9.51 (427)	2.50 (64)	2.88 (73)	3.75 (95)	2.88 (73)	1.06 (27)	1.00 (25)	1.32 (34)



Type C8

Type C8 - Dimensions

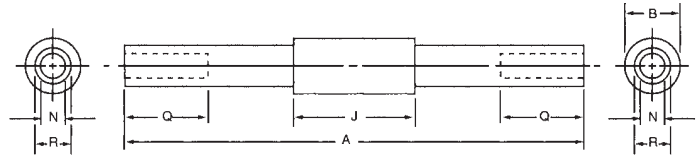
Catalog Number	Reference Number	Cable* size	Cable* Dimensions-Inches (mm)						
			A	B	D	J	L	M	N
CP4/OC8	F217815	4/0	9.62 (244)	1.44 (37)	1.12 (28)	3.62 (92)	.96 (24)	2.50 (64)	.52 (13)
CP250C8	K216784	250kcmil	9.62 (244)	1.44 (37)	1.12 (28)	3.62 (92)	.96 (24)	2.50 (64)	.58 (14)
CP350C8	Y212196	350kcmil	9.62 (244)	1.62 (41)	1.12 (28)	3.62 (92)	.96 (24)	2.50 (64)	.68 (17)
CP500C8	L216279	500kcmil	10.00 (254)	1.88 (48)	1.62 (41)	3.62 (92)	1.19 (30)	2.88 (73)	.81 (21)
CP750C8	V219369	750kcmil	10.13 (257)	2.50 (64)	2.00 (51)	3.75 (95)	1.31 (33)	2.88 (73)	1.00 (25)

* kcmil = MCM

Special Purpose Fuses

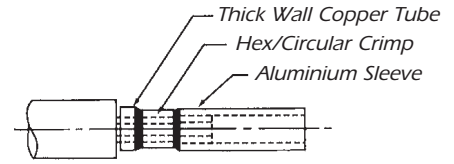
American Fuses Cable Protectors CP & CPH

Type A1 - Dimensions



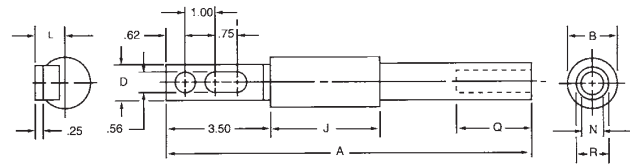
Type A1

Catalog Number	Reference Number	Cable* size	Dimensions-Inches (mm)					
			A	B	J	N	Q	R
CP4/0A1	N212716	4/0	13.88 (353)	1.44 (37)	3.62 (92)	.55 (14)	2.50 (64)	.85 (22)
CP250A1	R211684	250kcmil	13.88 (353)	1.44 (37)	3.62 (92)	.59 (15)	2.50 (64)	.94 (24)
CP350A1	C218847	350kcmil	13.88 (353)	1.62 (41)	3.62 (92)	.71 (18)	2.50 (64)	1.13 (29)
CP500A1	D218848	500kcmil	15.38 (391)	1.88 (48)	3.62 (92)	.85 (22)	2.88 (73)	1.33 (34)
CP750A1	A212198	750kcmil	15.50 (394)	2.50 (64)	3.75 (95)	1.06 (27)	2.88 (73)	1.62 (41)



Typical Terminal Assembly Details

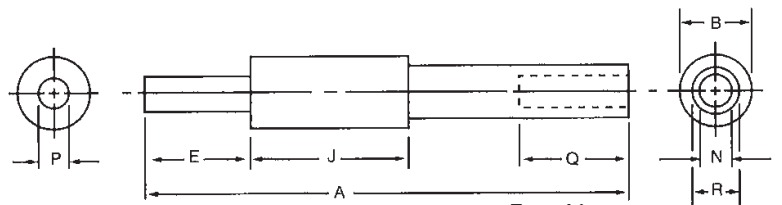
Type A3 - Dimensions



Type A3

Catalog Number	Reference Number	Cable* size	Dimensions-Inches (mm)							
			A	B	D	J	L	N	Q	R
CP4/0A3	Y213231	4/0	12.25 (311)	1.44 (37)	1.12 (28)	3.62 (92)	.96 (24)	.55 (14)	2.50 (64)	.85 (22)
CP250A3	X212195	250kcmil	12.25 (311)	1.44 (37)	1.12 (28)	3.62 (92)	.96 (24)	.59 (15)	2.50 (64)	.94 (24)
CP350A3	R219366	350kcmil	12.25 (311)	1.62 (41)	1.12 (28)	3.62 (92)	.96 (24)	.71 (18)	2.50 (64)	1.13 (29)
CP500A3	S219367	500kcmil	13.00 (330)	1.88 (48)	1.62 (41)	3.62 (92)	1.19 (30)	.85 (22)	2.88 (73)	1.33 (34)
CP750A3	A214245	750kcmil	13.12 (333)	2.50 (64)	2.00 (51)	3.75 (95)	1.31 (33)	1.06 (27)	2.88 (73)	1.62 (41)

Type A6 - Dimensions



Type A6

Catalog Number	Reference Number	Cable* size	Dimensions-Inches (mm)							
			A	B	E	J	N	P	Q	R
CP4/0A6	P213729	4/0	11.25 (286)	1.44 (37)	2.50 (64)	3.62 (92)	.55 (14)	.52 (13)	2.50 (64)	.85 (22)
CP250A6	M212715	250kcmil	11.25 (286)	1.44 (37)	2.50 (64)	3.62 (92)	.59 (15)	.58 (14)	2.50 (64)	.94 (24)
CP350A6	E222575	350kcmil	11.25 (286)	1.62 (41)	2.50 (64)	3.62 (92)	.71 (18)	.68 (17)	2.50 (64)	1.13 (29)
CP500A6	F222576	500kcmil	12.38 (314)	1.88 (48)	2.88 (73)	3.62 (92)	.85 (22)	.81 (21)	2.88 (73)	1.33 (34)
CP750A6	G215769	750kcmil	12.50 (318)	2.50 (64)	2.88 (73)	3.75 (95)	1.06 (27)	1.00 (25)	2.88 (73)	1.59 (41)

* kcmil = MCM

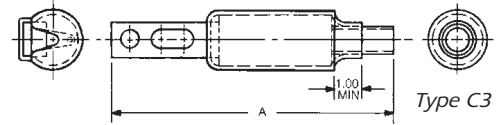
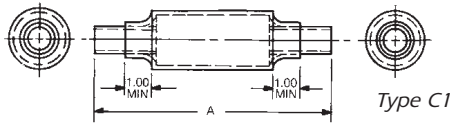
Note: Inside surface of sleeve ends is coated with oxide inhibitor and capped.

Type 5 - Use Copper Cable Protectors Type C5

Type 8 - Use Copper Cable Protectors Type C8

American Fuses Cable Protectors CP & CPH

Copper Cable Protectors with Heat Shrinkable Tubing*

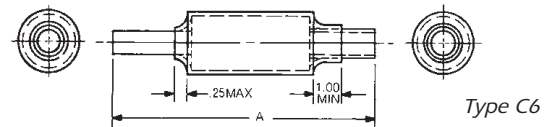
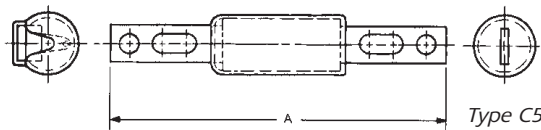


Type C1, Copper Cable - Dimensions

Cable size	A		Cable protector with heat shrinkable tubing	
	Inches	mm	Cat. Number	Ref. Number
4/0	7.12	(180)	CP4/0C1-HS	A214751
250kcmil	7.38	(188)	CP250C1-HS	N213728
350kcmil	7.62	(194)	CP350C1-HS	C200884
500kcmil	9.38	(238)	CP500C1-HS	C201942
750kcmil	9.51	(242)	CP750C1-HS	N216787

Type C3, Copper Cable - Dimensions

Cable size	A		Cable protector with heat shrinkable tubing	
	Inches	mm	Cat. Number	Ref. Number
4/0	8.87	(225)	CP4/0C3-HS	Z230367
250kcmil	9.00	(229)	CP250C3-HS	L230355
350kcmil	9.12	(232)	CP350C3-HS	B201941
500kcmil	10.00	(254)	CP500C3-HS	P212717
750kcmil	10.13	(257)	CP750C3-HS	H217817

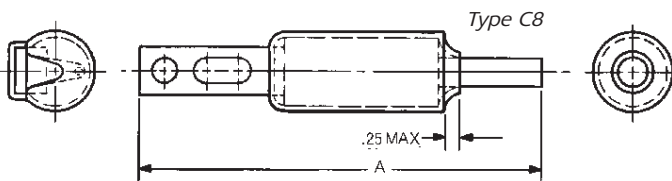


Type C5, Copper Cable - Dimensions

Cable size	A		Cable protector with heat shrinkable tubing	
	Inches	mm	Cat. Number	Ref. Number
4/0	10.37	(263)	CP4/0C5-HS	A230368
250kcmil	10.37	(263)	CP250C5-HS	D215260
350kcmil	10.37	(263)	CP350C5-HS	R230360
500kcmil	10.37	(263)	CP500C5-HS	B214752
750kcmil	10.50	(267)	CP750C5-HS	O230382

Type C6, Copper Cable - Dimensions

Cable size	A		Cable protector with heat shrinkable tubing	
	Inches	mm	Cat. Number	Ref. Number
4/0	7.87	(200)	CP4/0C6-HS	B230369
250kcmil	8.00	(203)	CP250C6-HS	M230356
350kcmil	8.12	(206)	CP350C6-HS	S230361
500kcmil	9.38	(238)	CP500C6-HS	L230378
750kcmil	9.51	(242)	CP750C6-HS	R230383



Type C8, Copper Cable - Dimensions

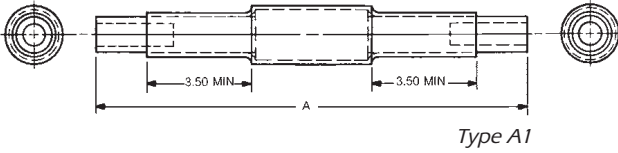
Cable size	A		Cable protector with heat shrinkable tubing	
	Inches	mm	Cat. Number	Ref. Number
4/0	9.62	(244)	CP4/0C8-HS	C230370
250kcmil	9.62	(244)	CP250C8-HS	A217304
350kcmil	9.62	(244)	CP350C8-HS	V230363
500kcmil	10.00	(254)	CP500C8-HS	M216786
750kcmil	10.13	(257)	CP750C8-HS	S230384

* Transparent heat shrinkable tubing is supplied separately with **-HS** Catalog No. Maximum curing conditions: 5 seconds at 450°F.

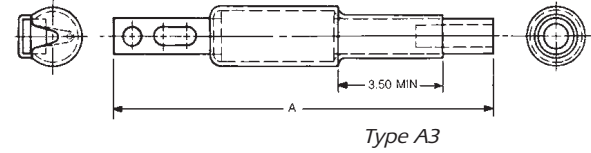
Special Purpose Fuses

American Fuses Cable Protectors CP & CPH

Aluminum Cable Protectors with Heat Shrinkable Tubing*



Type A1



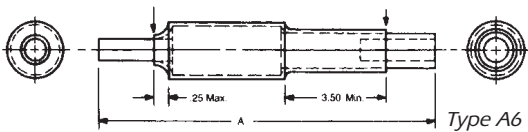
Type A3

Type A1, Copper Cable - Dimensions

Cable size	A		Cable protector with heat shrinkable tubing	
	Inches	mm	Cat. Number	Ref. Number
4/0	13.88	(353)	CP4/0A1-HS	W230364
250kcmil	13.88	(353)	CP250A1-HS	G230351
350kcmil	13.88	(353)	CP350A1-HS	N230357
500kcmil	15.38	(391)	CP500A1-HS	F230373
750kcmil	15.50	(394)	CP750A1-HS	O212718

Type A3, Copper Cable - Dimensions

Cable size	A		Cable protector with heat shrinkable tubing	
	Inches	mm	Cat. Number	Ref. Number
4/0	12.25	(311)	CP4/0A3-HS	X230365
250kcmil	12.25	(311)	CP250A3-HS	H230352
350kcmil	12.25	(311)	CP350A3-HS	N219892
500kcmil	13.00	(330)	CP500A3-HS	G230374
750kcmil	13.12	(333)	CP750A3-HS	N230380



Type A6

Type A6, Copper Cable - Dimensions

Cable size	A		Cable protector with heat shrinkable tubing	
	Inches	mm	Cat. Number	Ref. Number
4/0	11.25	(286)	CP4/0A6-HS	Y230366
250kcmil	11.25	(286)	CP250A6-HS	J230353
350kcmil	11.25	(286)	CP350A6-HS	P230358
500kcmil	12.38	(314)	CP500A6-HS	H230375
750kcmil	12.50	(318)	CP750A6-HS	P230381

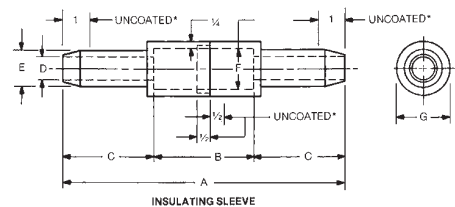
Type 5 - Use Copper Cable Protectors Type C5
Type 8 - Use Copper Cable Protectors Type C8

* Transparent heat shrinkable tubing is supplied separately with -HS Catalog Numbers. Maximum curing conditions: 5 seconds at 450°F.

Molded Rubber Insulating Sleeves**

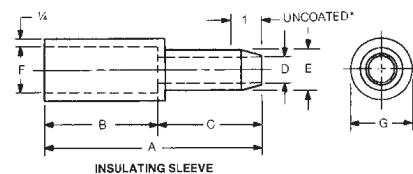
For Type C1 Copper Cable Protectors - Dimensions

Catalog Number	Reference Number	Cable* size	Dimensions-Inches (mm)						
			A	B	C	D	E	F	G
4/0CCR	D213236	4/0	10.44 (265)	3.69 (94)	3.38 (86)	.83 (21)	1.33 (33)	1.50 (38)	2.00 (51)
500CCR	E214755	500kcmil	14.19 (360)	3.69 (94)	5.25 (133)	1.31 (33)	1.81 (46)	1.94 (49)	2.44 (62)



For Type C3 Copper Cable Protectors - Dimensions

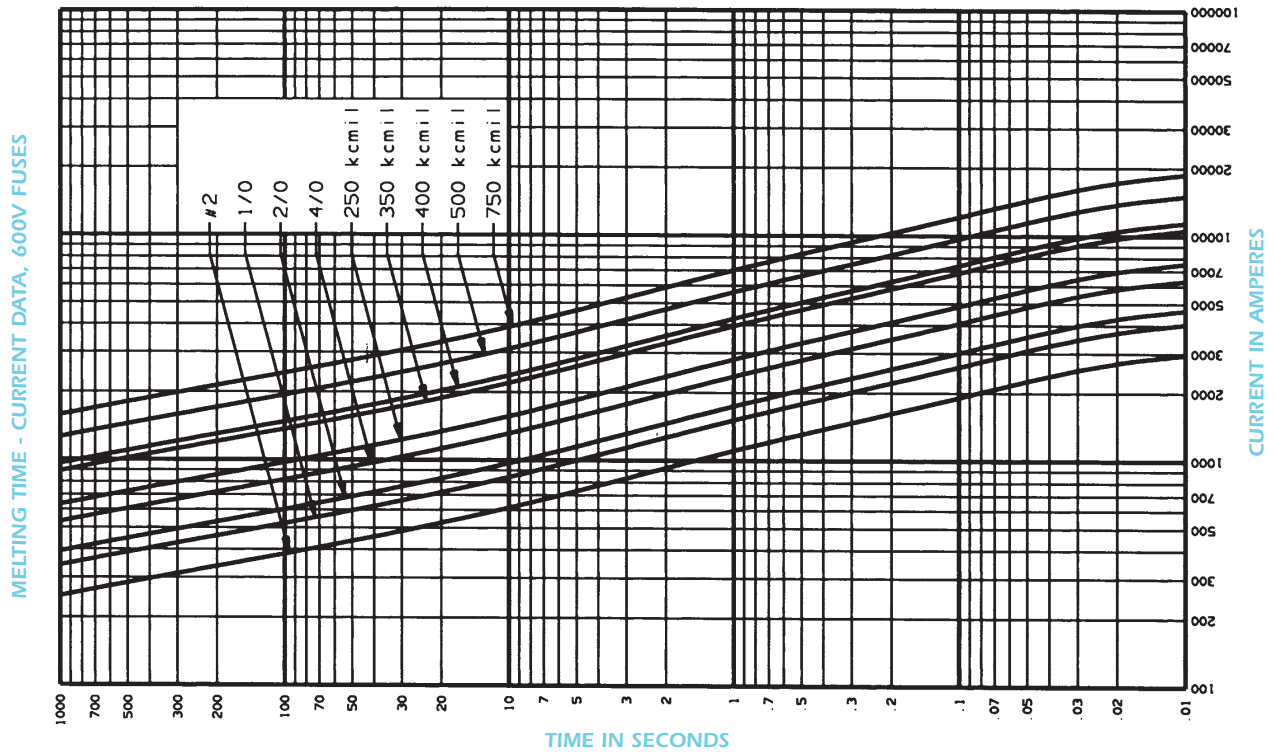
Catalog Number	Reference Number	Cable* size	Dimensions-Inches (mm)						
			A	B	C	D	E	F	G
4/0CBR	D212201	4/0	7.06 (179)	3.69 (94)	3.38 (86)	.83 (21)	1.33 (33)	1.50 (38)	2.00 (51)
500CBR	V213734	500kcmil	8.94 (227)	3.69 (94)	5.25 (133)	1.31 (33)	1.81 (46)	1.94 (49)	2.44 (62)



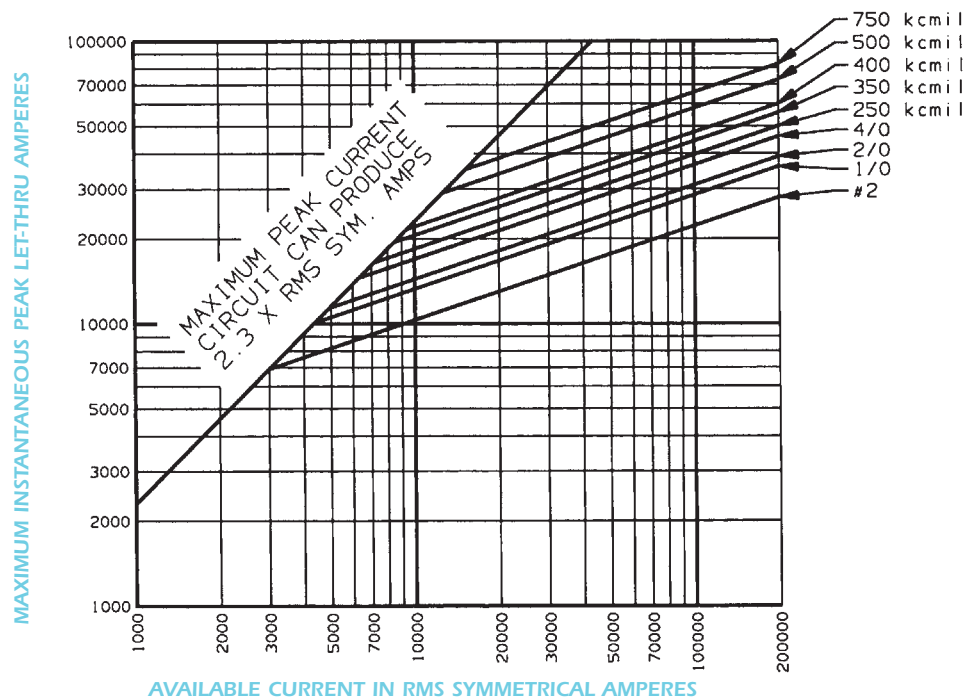
** Molded rubber insulating sleeves are ordered by their own catalog numbers, and not as suffixes to the cable protector catalog numbers. Neoprene coated except as noted.

American Fuses Cable Protectors CP & CPH

Copper & Aluminum Cable Protectors - #2-750kcmil



Peak Let-Thru Current Data Copper & Aluminum Cable Protectors - #2-750kcmil - 600V



American Fuses Cable Protectors CP & CPH

Recommended Tooling For Installing CP Cable Protectors on Copper & Aluminum Cables Circular Crimp – Copper Cable

Cable** Size	Burdndy Hypress & Die Set				
	Y34A	Y35	Y39	Y46+	Y48B
4/0	A28R	U28RT	U28RT	U28RT	C28R
250kcmil	A29R	U29RT	U29RT	U29RT	C29R
350kcmil	A31R	U31RT	U31RT	U31RT	C31R
500kcmil	A34R	U34RT	U34RT	U34RT	C34R
750kcmil	-	-	U39RT	U39RT	C39R

Circular Crimp – Aluminum Cable

4/0	-	U28ART	U28ART	U28ART	C28AR
250kcmil	-	U29ART	U29ART	U29ART	C29AR
350kcmil	-	U31ART	U31ART	U31ART	C31AR
500kcmil	-	U34ART	U34ART	U34ART	C34AR
750kcmil	-	-	U39ART	U39ART	C39AR

Hex/Circular Crimp – Copper Cable

Cable** Size	T & B Installing Tools				
	TBMB Tool	13642 Head		TBM 15 Head	
	Die	Die		Die	
	Cat. Number	Cat. Number	Code Number	Cat. Number	Code Number
4/0	13463	11740	54	15511	54H
250kcmil	13463	11771	62	15510	62
350kcmil	13466	11743	71H	15514	71H
500kcmil	13468	11746	87H	15506	87H
750kcmil	-	11749	106H	15515	106H

Hex/Circular Crimp – Aluminum Cable

4/0	13465	11742	66H	15534	66
250kcmil	13466	11743	71H	15514	71H
350kcmil	13468	11746	87H	15506	87H
500kcmil	-	11749	106H	15515	106H
750kcmil	-	-	-	15603	125H

Hex/Circular Crimp – Copper Cable

Cable** Size	Homac Tools UT 15 Head Die	
	Cat. Number	Code. Number
4/0	15511	54H
250kcmil	15510	62
350kcmil	15514	71H
500kcmil	15587	87H
750 kcmil	15500	106H

Note: Crimping tools suitable for standard splicing sleeves are also suitable for CP cable protectors for copper and aluminum cables because Ferraz Shawmut uses standard commercial dimensions on both inside and outside diameters.

Hex/Circular Crimp – Aluminum Cable

4/0	15534	66
250kcmil	15514	71H
350kcmil	15506	87H
500kcmil	15515	106H
750 kcmil	15603	125H

* with adapter P-U-ADP

** kcmil = MCM