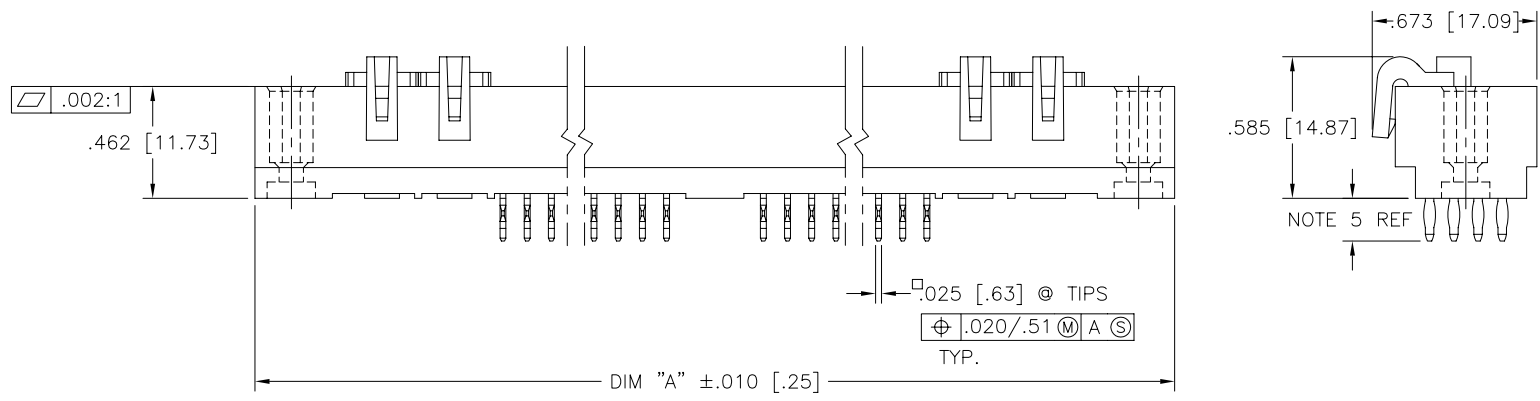
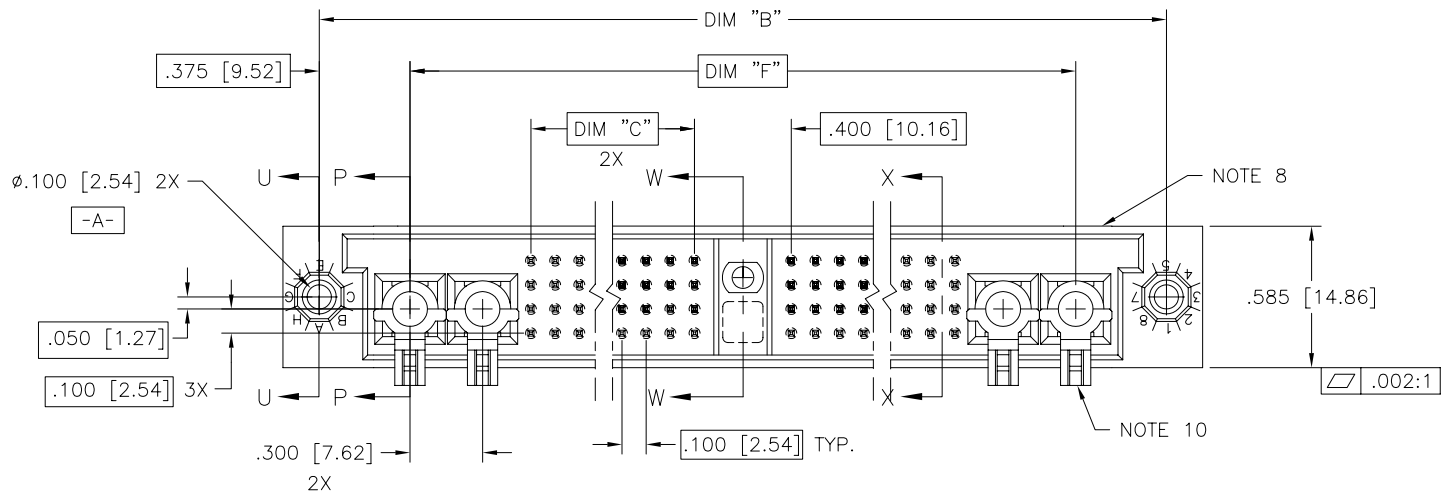


PRODUCT NUMBER
SEE NOTE 1



mat'l. code NOTE 3		surface ISO 1302 ✓	tolerance ISO 406 ISO 1101	projection INCH/MM	product family HPC
ltr	ecn no	dr	date	tolerances unless otherwise specified	title
A	V22185	RDS	5/11/92	angles .xx±.01/.3	4 ROW VERTICAL HEADER PRESS FIT, 1 G.P., 4 P.P.
B	V40260	PDP	1/14/94	linear .xxx±.005/.13	
C	V41237	GAH	8/17/94	0'±2'	.xxxx±.0020/.051
D	V91067	DLW	5/20/99	dr	D.SHEAFFER 5/7/92
E	V00273	JWS	2/1/00	engr	S.CLARK 5/11/92
F	M06-0260	MHT	7/07/06	chr	S.CLARK 5/11/92
				appd	S.CLARK 5/11/92
sheet index	revision sheet	F	F		
		1	2		



scale 1:1
50717
A3
type Product Customer Drawing



Copyright FCI

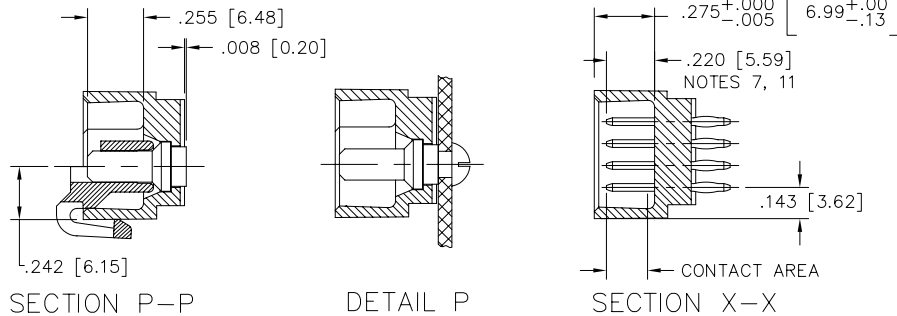
PRODUCT NUMBER	DIM.	LENGTH FORMULAS
SEE NOTE 1	DIM "A"	.100/2.54 x NO. OF COLUMNS + 2.25/57.2
	DIM "B"	.100/2.54 x NO. OF COLUMNS + 1.950/49.53
	DIM "C"	.100/2.54 x NO. OF COLUMNS DIVIDED BY 2 - .100/2.54
	DIM "F"	.100/2.54 x NO. OF COLUMNS + 1.200/30.48

NOTES:

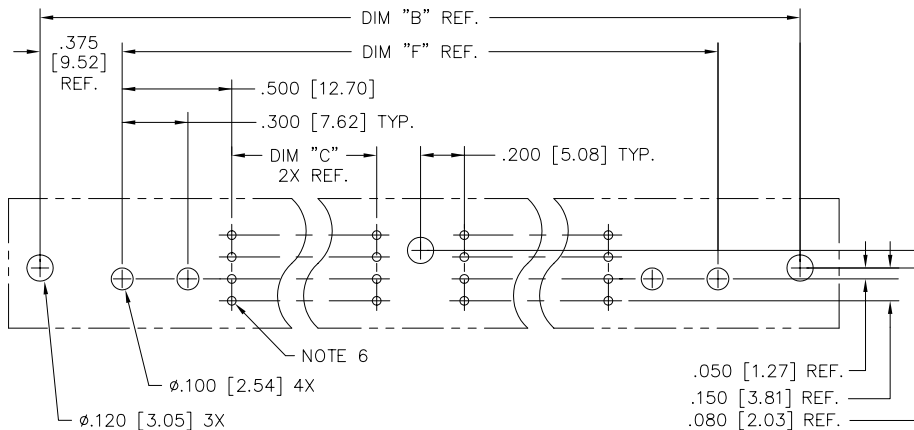
- ① PRODUCT NUMBERING CODE:
 $50517 - X YYY Z$
 X = TAIL LENGTH (NOTE 5)
 YYY = NO. OF POSITIONS (NOTE 2)
 Z = PLATING (NOTE 4)
 BASE NUMBER

- PRODUCT NUMBERING CODE FOR SELECT LOAD PART NUMBERS:
 $50517 - XYYYY$
 X = SEQUENCE NUMBER
 ALWAYS "XX"
 BASE NUMBER

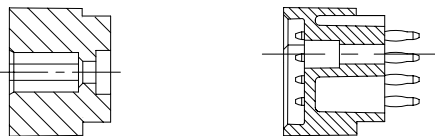
- ② THIS PRODUCT IS CONFIGURED IN SIZES OF 20 thru 120 COLUMNS IN INCREMENTS OF TWO.
 i.e.: 20,22,24,26,.....118,120.
- ③ HOUSING MATERIAL: GLASS AND MINERAL FILLED HIGH TEMP. THERMOPLASTIC. FLAME RETARDANT PER UL94V-0. COLOR: BLACK.
 PIN MATERIAL: PHOS BRONZE
- ④ PLATING CONTACT AREA OPTIONS:
 A = 50u" Ni UNDER ALL WITH 30u" Au ON CONTACT AREA, SnPb ON PCB INTERFACE AND Au FLASH ON ALL OTHER AREAS.
 C = 50u" Ni UNDER ALL WITH 30u" Au ON CONTACT AREA, SnPb ON PCB INTERFACE, 30u" ON TAIL SIDE CONTACT AREA, AND Au FLASH ON ALL OTHER AREAS.
- ⑤ TAIL LENGTH OPTIONS:
 FOR PLATING OPTION "A":
 A = .177/4.5
 G = .250/6.35
 FOR PLATING OPTION "C":
 C = .533/13.54
 D = .733/18.62
- ⑥ $\phi .0453/1.151$ DRILLED HOLE PLATED WITH .0003/.007 MIN. SnPb OVER .001/.03 to .003/.08 Cu. PLATING TO ACHIEVE A $\phi .040 \pm .003/1.02 \pm .08$ HOLE.
- ⑦ TO ASSURE PROPER INSTALLATION: TOOLING, AS SPECIFIED IN INSTRUCTION MANUAL 155915-001 MUST BE USED. PIN MATING LENGTH WILL BE $\pm .002/.05$ AFTER INSTALLATION.
- ⑧ MANUFACTURERS NAME, PART NUMBER AND LOT CODE TO APPEAR ON THIS SURFACE PER BUS-12-108.
- ⑨ FOR DOCUMENTATION MENU, SEE BUS-01-057.
- ⑩ POWER PIN LOCATOR (REF. 50234) TO BE REMOVED AFTER INSTALLATION.
- ⑪ REFERENCE 50805 FOR F.M.L.B. OPTIONS AND WORKSHEET.



SECTION P-P (W/LOCATOR, SEE DETAIL P)
 DETAIL P (INSTALLED IN PCB, NOTE 10)



RECOMMENDED PCB LAYOUT
 (ALL HOLES LOCATED ON .100/2.54 GRID UNLESS OTHERWISE SPECIFIED)



SECTION U-U SECTION W-W

mat'l. code		surface ISO 1302 ✓	tolerance ISO 406 ISO 1101	projection INCH/MM	product family HPC
ltr	ecn	no	dr	date	tolerances unless otherwise specified
F					angles linear .xx±.01/.3 0'±2' .xxx±.005/.13 .xxx±.0020/.05
dr				D.SHEAFFER	5/7/92
enr				S.CLARK	5/11/92
chr				S.CLARK	5/11/92
appd				S.CLARK	5/11/92
sheet index	revision sheet				scale 1:1
					title 4 ROW VERTICAL HEADER PRESS FIT, 1 G.P., 4 P.P.
					dwg no 50717
					sheet 2 of 2 size A3
					type Product Customer Drawing