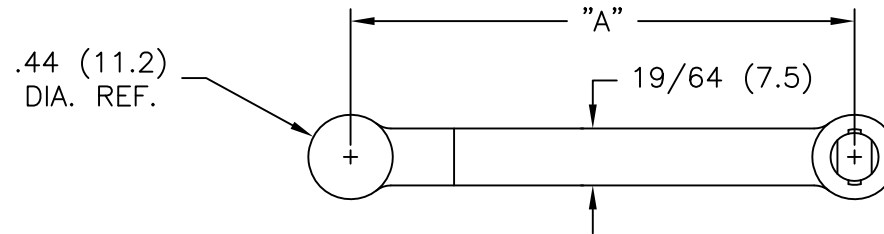
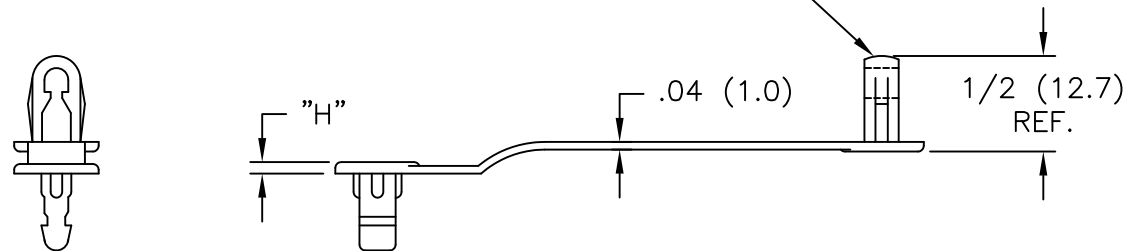


NYLON 6/6 (RMS-01) PART NO.	POLYPROPYLENE (RMS-10) PART NO.	DIM. "A" REF.	MAX. HOLDING DIAMETER	DIM. "H"
CH-1-01	CH-1-10	1-3/4 (44.5)	3/8 (9.5)	.06 (1.5)
CH-2-01	CH-2-10	2-5/8 (66.7)	5/8 (15.9)	.12 (3)
CH-3-01	CH-3-10	3-3/4 (95.3)	1 (25.4)	.06 (1.5)

COLOR: NATURAL OR BLACK; SPECIFY WHEN ORDERING.  
TO ORDER BLACK ADD SUFFIX "BK" TO PART NO.



TO PRESS FIT IN A 1/4 (6.4) DIA. HOLE  
IN A 1/32 TO 3/32 (0.8 TO 2.4) THICK PANEL



TITLE: CABLE HANGER		DWG IN IN (mm)		FINAL	
TOLERANCES UNLESS NOTED .XX=±.010 .XXX=±.005 FRAC=±1/64 ANG=±1°	FILE # CH	DWN: P.B.	DT03.08.94	PART #	
	MAT'L: SEE NOTES	CHKD:	ENG:	SEE TABLE	
	RE: RICHCO, INC.	RICHCO INC. ENG@RICHCO-INC.COM (773) 539-4060		PRINT TYPE CA	
REV	DESCRIPTION	ENGR	DATE		

C	SEE CO 200245 FOR CHANGES	SK	09.18.08
B	UPDATED PRINT AND CORRECTED METRIC DIM.	SM	03.13.02
A	CONV. TO ACAD; DIM .06 (1.5) ADDED; DIM .44 DIA. MADE REF; NOTES ADDED	PB	03.08.94
REV	DESCRIPTION	ENGR	DATE