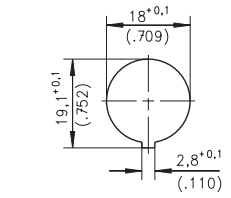
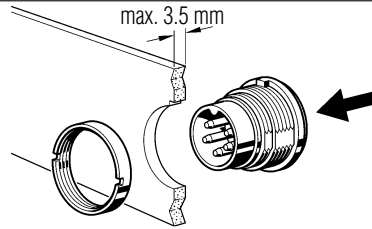


C 091 A

Male receptacle,
screw locking,
rear mounting



Panel cutout

Description	Drawing	No. of cont.	Part Number solder termination		Part No. Crimp termination ¹⁾			
			Contact plating silver ring nut	hex nut		Contact plating gold ²⁾ ring nut		
Male receptacle, termination: solder or crimp, panel mounting with ring nut, contact plating: silver or gold. solder area: tin plated		2	T 3202 100	–	–			
		3 DIN	T 3262 100	–	–	T 3262 150 ⁴⁾		
		4 IEC	T 3302 100	–	–	T 3302 150 ⁴⁾		
		5	T 3362 100	–	–	T 3362 150		
		5 S DIN	T 3358 100	–	–	T 3358 150 ⁴⁾		
		6 DIN	T 3402 100	–	–	T 3402 150 ⁴⁾		
		7	T 3477 100	–	–	T 3477 150 ⁴⁾		
		7 DIN	T 3486 100	–	–	T 3486 150 ⁴⁾		
		8 DIN	T 3506 100	–	–	T 3506 150 ⁴⁾		
		12	–	–	T 3637 100	–		
		14	–	–	T 3652 100	–		
		Male receptacle, termination: straight dip solder, pin length 6 mm from flange, panel mounting with ring nut, contact plating: silver or gold. solder area: tin plated		2	T 3202 400 ⁴⁾	–	–	
				3 DIN	T 3262 400	–	–	–
				4 IEC	T 3302 400 ⁴⁾	–	–	–
5	T 3362 400			–	–	–		
5 S DIN	T 3358 400 ⁴⁾			–	–	–		
6 DIN	T 3402 400 ⁴⁾			–	–	–		
7	T 3477 400			–	–	–		
7 DIN	T 3486 400 ⁴⁾			–	–	–		
8 DIN	T 3506 400 ⁴⁾			–	–	–		
12	–			–	T 3637 404	–		
14	–	–	T 3652 404 ⁴⁾	–				

¹⁾ Please order crimp contacts separately, see page 46 ²⁾ see remark page 9

⁴⁾ Available upon request. Min. order qty. 100 pcs/type.