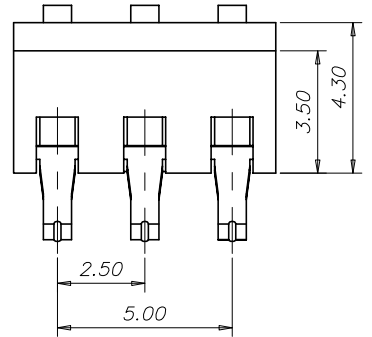


This document is the property of Amphenol Corporation and is delivered on the express condition that it is not to be disclosed, reproduced or used, in whole or in part, for manufacture or sale by anyone other than Amphenol Corporation without its prior consent, & that no right is granted to disclose or to use any information in this document.

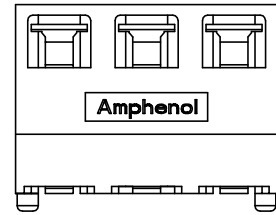
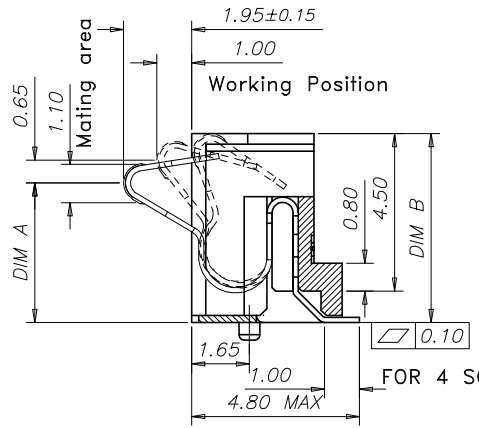
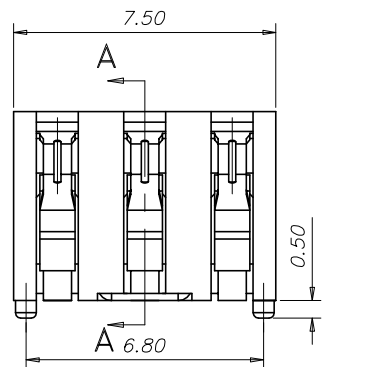
REVISIONS				
SYM	ECN	DESCRIPTION	DATE	APPROVED
B	HK3722	Release to production	3/28/06	IP

# CUSTOMER DRAWING



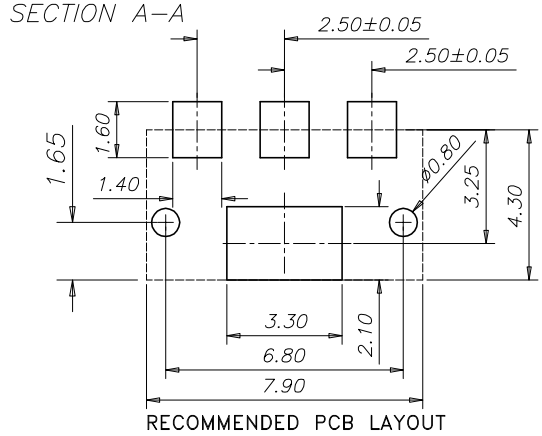
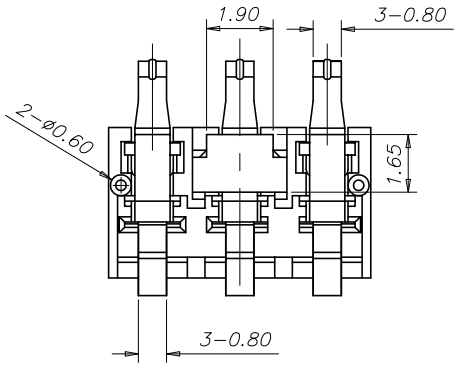
The Order P/N:  
BC-XXXXY-03-02

XXXX	DIM A	DIM B
4560	4.50	6.00
4054	4.00	5.40
3550	3.50	5.00



**NOTES:**

- MATERIAL:**  
A. PIN: ALLOY COPPER  
B. INSULATOR: HIGH TEMPERATURE THERMOPLASTICS, UL94V-0, BLACK.
- FINISH:**  
50-100 MICRINCH (1.27-2.54 MICRON) NICKEL UNDERPLATED ALL OVER,  
15 MICRINCH (0.38 MICRON) GOLD PLATED AT MATING AREA,  
Gold flash PLATED AT SOLDER TAIL
- ELECTRICAL SPECIFICATIONS:**  
VOLTAGE RATING: 250 VAC MIN  
CURRENT RATING: 2.0 A MIN  
DIELECTRIC STRENGTH: 500 VAC FOR 1 MINUTE MIN  
INSULATION RESISTANCE: 500 MEG OHM MIN  
CONTACT RESISTANCE: 30 MILL.OHM MAX  
OPERATION TEMPERATURE: -55ī to +125ī  
PRODUCT WITHSTANDING REFLOW SOLDERING 245ī FOR 10S
- MECHANICAL SPECIFICATIONS:**  
4.1 DURABILITY: 5,000 CYCLES  
4.2 NORMAL FORCE AT WORKING POSITION: 80g MIN.  
PARTS TO BE PACKAGED IN ANTI-STATIC TAPE AND REEL  
FOR AUTOMATIC PLACEMENT. ALL PACKAGING MATERIALS TO BE APPROVED BY AMPHENOL ENGINEERING.
- MATERIAL SHOULD BE FULFILLED AMPHENOL SPEC# SSN002.**



UNLESS OTHERWISE SPECIFIED TOLERANCES		APPROVAL		DATE
U.S.	METRIC	DRAWN	YB.WANG	3/28/06
.X +/-	0.25	CHECKED	DB.GAO	3/28/06
.XX +/-	0.15	CHECKED		
.XXX +/-				
FRACTIONS +/-	0.5°			
ANGLES +/-				
FOR MATERIALS AND FINISHES SEE NOTES		DRAWING FILE : DRAWING\BC\C BC-XXXXY-03-02		
REMOVE SHARP EDGES		ANGLE OF PROJECTION		
DIMENSIONS				
U.S.	INCHES			
(METRIC)	(MM)			

Amphenol		
TITLE 3 PIN BATTERY CONNECTOR (VERTICAL)		
SIZE	DRAWING NO.	REV.
A3	C BC-XXXXY-03-02	B
SCALE	NONE	SHEET 1 OF 1