

PRODUCT NUMBER

5 2 6 0 1 - X X X - X X X X LF

PLATING
 S=15μ"[0.38μm]GOLD ON CONTACT AREA
 150μ"[3.81μm]TIN/LEAD ON TAIL
 G=30μ"[0.76μm]GOLD ON CONTACT AREA
 150μ"[3.81μm]TIN/LEAD ON TAIL
 F=8μ"[0.20μm]GOLD FLASH ON CONTACT AREA
 150μ"[3.81μm]TIN/LEAD ON TAIL

LEAD FREE OPTION
 NOTE 10,11,12

PACKAGE NOTE 5

RETENTION
 R= RETENTIVE LEG (NOTE 6)

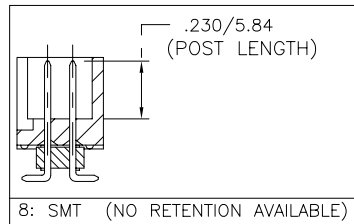
POLARIZATION
 NOTE 9

LEAD FREE PLATING

S=15μ"[0.38μm]GOLD ON CONTACT AREA
 100μ"[2.54μm]TIN ON TAIL
 G=30μ"[0.76μm]GOLD ON CONTACT AREA
 100μ"[2.54μm]TIN ON TAIL
 F=8μ"[0.20μm]GOLD FLASH ON CONTACT AREA
 100μ"[2.54μm]TIN ON TAIL

TAIL	
1	.090/2.29
2	.112/2.84
4	.120/3.05
6	.150/3.81
7	.675/17.15
8	SMT

	TOTAL POSITIONS	HDR. STYLE
10	2 x 5	B
14	2 x 7	C
16	2 x 8	D
20	2 x 10	D
26	2 x 13	D
30	2 x 15	D
34	2 x 17	D
40	2 x 20	D
44	2 x 22	D
50	2 x 25	D
60	2 x 30	D



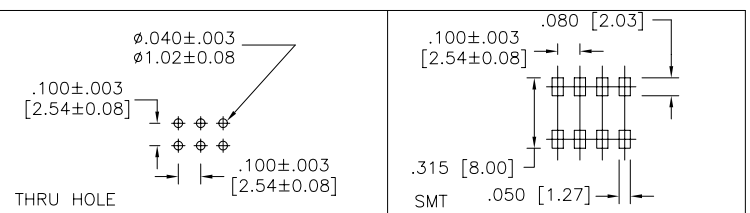
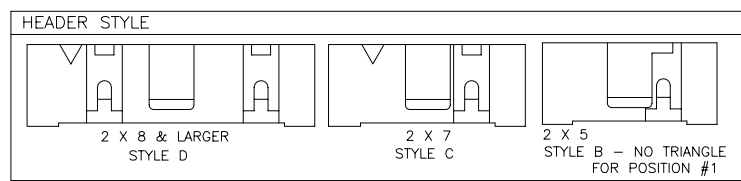
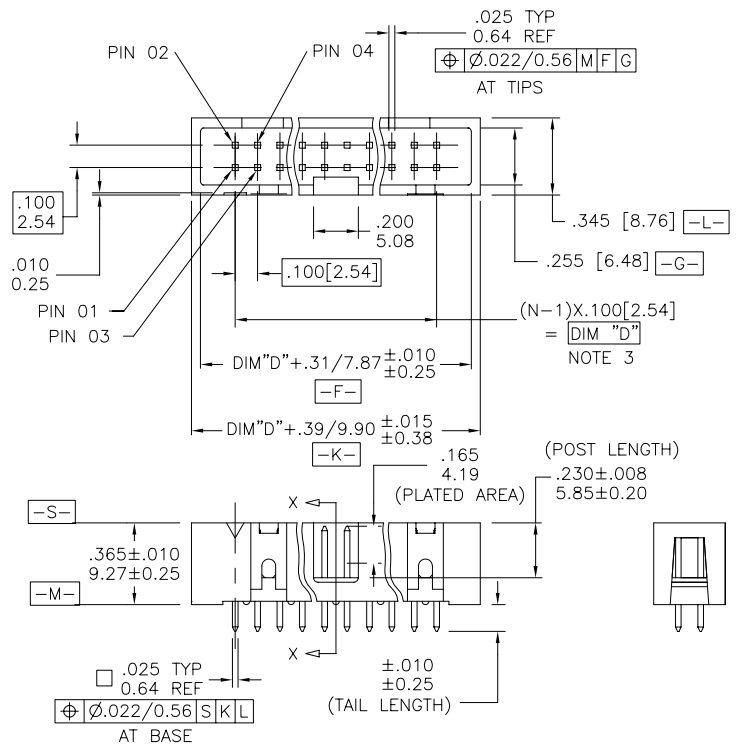
NOTES:

- HOUSING MAT'L: HIGH TEMPERATURE THERMOPLASTIC. UL94V-0
 COLOR: BLACK
- PIN MATERIAL: PHOSPHOR-BRONZE
- TO DETERMINE DIMENSIONS:
 N = NUMBER OF POSITIONS PER ROW
 EXAMPLE: 10 POS.,(N-1) x .100[2.54]=.900[22.86]
- 3 LBS./1.36 KG MIN. RETENTION
- PACKAGED IN TRAYS,
 PART NUMBER FOLLOWS BY "T" SUFFIX ARE PACKAGED
 TAPE ON REEL WITH PACK-UP INSTALLED. VACUUM CAP TO BE
 CENTRALLY LOCATED REGARDLESS OF NUMBER OF POSITIONS (SHEET 3)
- RETENTIVE LEG APPLICABLE TO TAIL LENGTHS .125/3.18 MAX.
 5LB/2.3KG MAX INSERTION FORCE AND .25LB./1KG MIN RETENTION FORCE
 PER RETENTIVE PIN USING .062/1.57 THICK CIRCUIT BOARD AND RECOMMENDED
 HOLE PATTERN. RETENTIVE LOCATION AT THE DISCRETION OF THE MANUFACTURER.
 RETENTION PIN MAY BE SHIFTED TO NEXT POSITION.
- OMIT FROM PRODUCT NUMBER IF THIS FEATURE IS NOT APPLICABLE.
- UNDERPLATING: 50μ"/1.27μm Ni.
- FOR POLARIZATION SPECIFY POSITION NUMBER (i.e. 03 = PIN 3) TO OMIT PIN.
 OMIT FROM PRODUCT NUMBER IF THIS FEATURE IS NOT APPLICABLE.
- ADD "LF" SUFFIX AT THE END OF PART NUMBER FOR LEAD FREE OPTION.
- THE HOUSING WILL WITHSTAND EXPOSURE TO 260°C PEAK TEMPERATURE
 FOR 15 SECONDS IN A WAVE SOLDER APPLICATION WITH A 1.5mm
 MINIMUM THICK CIRCUIT BOARD. SEE APPLICATION NOTES/PROCEDURES
 IF THEY ARE AVAILABLE.
 THE HOUSING WILL WITHSTAND EXPOSURE TO 260°C PEAK TEMPERATURE
 FOR 20 SECONDS IN A CONVECTION, INFRA-RED OR VAPOR PHASE
 REFLOW OVEN. SEE APPLICATION NOTES/PROCEDURES IF THEY ARE AVAILABLE.
- THIS PRODUCT MEETS EUROPEAN UNION DIRECTIVES AND OTHER
 COUNTRY REGULATION AS DESCRIBED IN GS-22-008.

mat'l. code		surface ISO 1302 ✓		tolerance ISO 406 ISO 1101		projection ⊕		product family QUICKIE	
ltr		ecn no dr		date		tolerances unless otherwise specified		title	
H		M05-0041		MHT		3/08/05		.100/2.54mm LOW PROFILE	
J		M05-0042		MHT		3/09/05		SHOROUDED VERTICAL HEADER	
K		M05-0044		MHT		3/10/05		scale 1:1	
L		M06-0069		MHT		2/10/06		dr	
M		M06-0289		AGS		7/29/06		engr	
N		M07-0074		MHT		1/25/07		chr	
P		M07-0185		MHT		4/16/07		appd	
sheet		revision		P		P		P	
index		sheet		1		2		3	



Copyright FCI

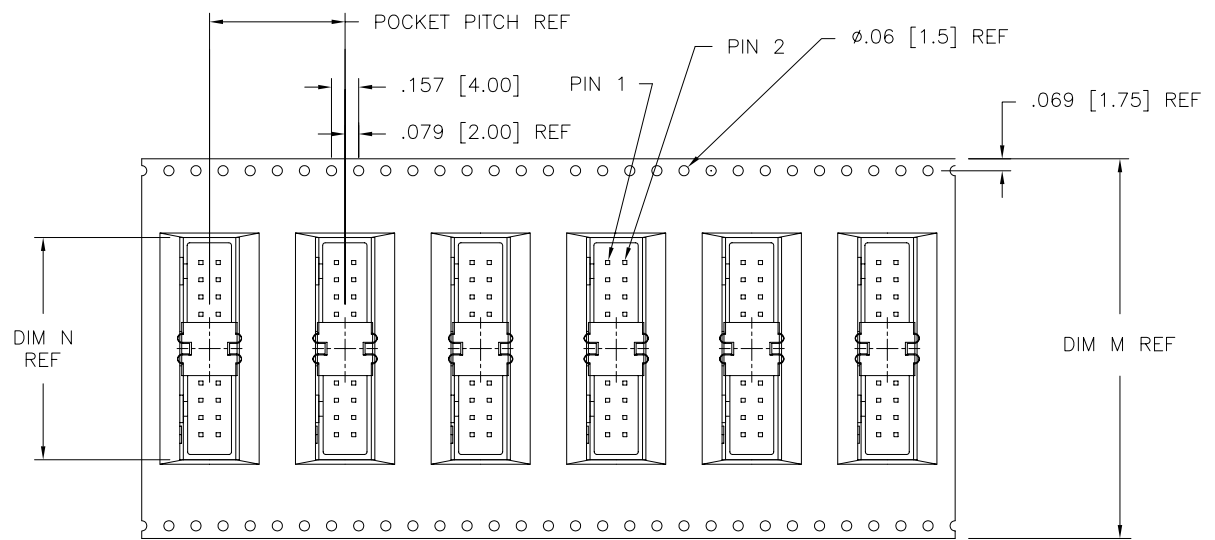


mat'l. code		surface ISO 1302 ✓		tolerance ISO 406 ISO 1101		projection INCH/MM		product family QUICKIE	
ltr	ecn	no	dr	date	tolerances unless otherwise specified		scale 1:1	title	
P					angles	.XX±.01/.3		.100/2.54mm LOW PROFILE SHOROUDED VERTICAL HEADER	
					linear	.xxx±.005/.13		dwg no sheet 2 of 3 size	
					0°±2'	.xxx±.0020/.051		52601 A3	
					dr	D. INGRAM 7/7/99		type Product Customer Drawing	
					enr	L. GREEN 7/12/99			
					chr	L. GREEN 7/12/99			
					appd	L. GREEN 7/21/99			
sheet index	revision sheet								

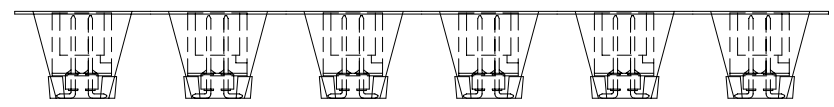
Copyright FCI
 FCIconnect.com

PRODUCT No. NOTE 10	NO. OF POSITIONS	HSG. STYLE	POLARIZED POSITION	PACKAGING	POCKET PITCH	DIM M	DIM N
52601-S10-801	2 X 5	B	01	TAPE-ON-REEL	0.787/20.00	1.260/32.00	0.790/20.07
52601-S10-805	2 X 5	B	05	TAPE-ON-REEL	0.787/20.00	1.260/32.00	0.790/20.07
52601-S10-807	2 X 5	B	07	TAPE-ON-REEL	0.787/20.00	1.260/32.00	0.790/20.07
52601-S14-807	2 X 7	C	07	TAPE-ON-REEL	0.787/20.00	1.732/44.00	1.090/27.69
52601-S14-80714	2 X 7	C	07,14	TAPE-ON-REEL	0.787/20.00	1.732/44.00	1.090/27.69

* CUSTOMER SPECIAL



UN-REELING DIRECTION OF FEED →



FCJ
FCIconnect.com

Copyright FCI

mat'l. code		surface ISO 1302 ✓		tolerance ISO 406 ISO 1101		projection ⊕		product family QUICKIE	
ltr		ecn no dr		date		tolerances unless otherwise specified		title	
P						.XX±.01/.3		.100/2.54mm LOW PROFILE	
						linear .XXX±.005/.13		SHOROUDED VERTICAL HEADER	
						0'±2'		scale 1:1	
								dwg no sheet 3 of 3 size	
				dr D. INGRAM 7/7/99				52601 A3	
				enr L. GREEN 7/12/99				type Product Customer Drawing	
				chr L. GREEN 7/12/99					
				appd L. GREEN 7/21/99					
sheet index		revision sheet							

