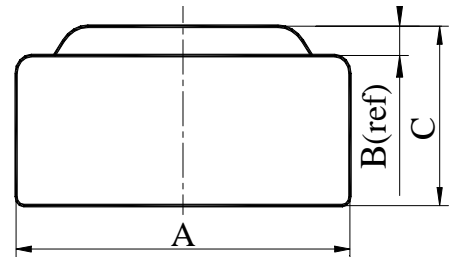
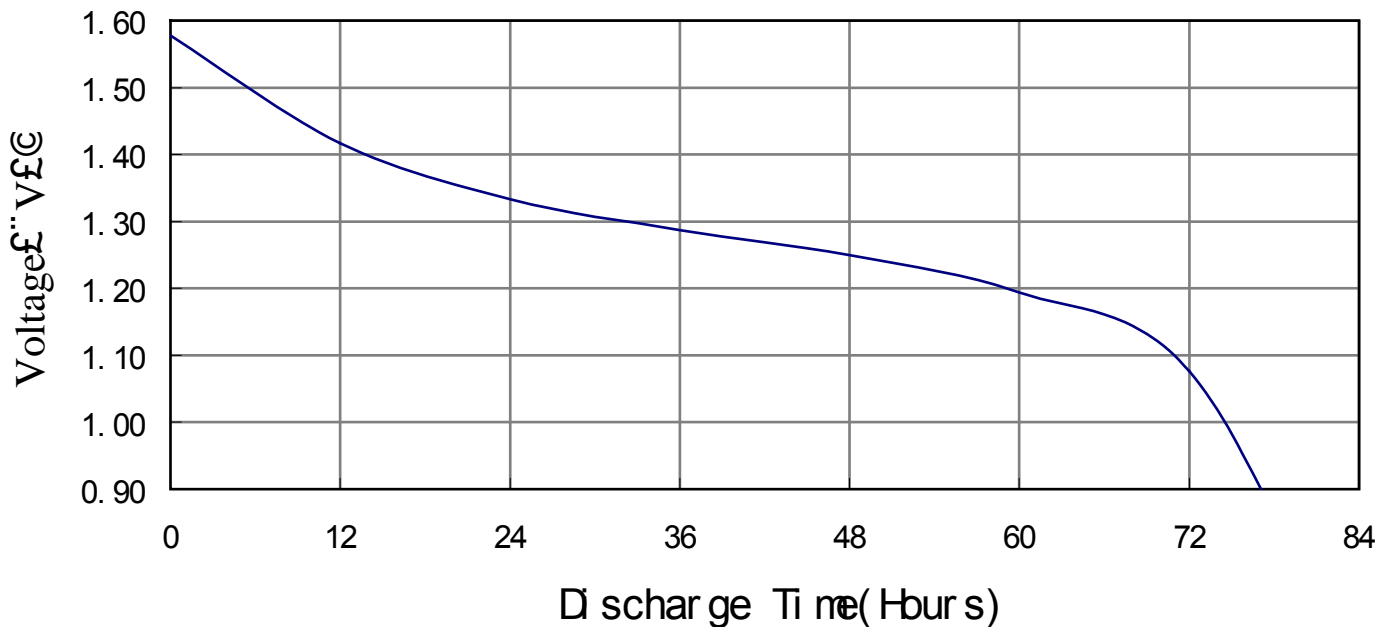


Chemical System : Alkaline manganese button batteries
Model No. : LR1142 (LR43 AG12 186)
Nominal Dimensions : $\Phi 11.60 \times 4.20 \text{mm}$
Nominal Voltage : 1.50V
Average Weight : 1.50g
Applications : Watch, Calculator, Electronic toy, etc.
Shelf Life : Not less than 90% of the service capacity, following 1st year storage at 20°C.
Loading : 1000Ω(20°C)
Cut Off Voltage : 0.90V
Capacity : 108mAh



Dimensions	Unit: mm
A	11.40----11.60
B	0.40(ref)
C	3.90----4.20

Typical Discharge Characteristics at 20



SPEC.No.:REF-L43-0102

*Manufacturer reserves the right to alter or amend the design, model and specification without prior notice.