

**General**

The A5882/3(M), A5884/5(M) are the tri-state encoder/decoder CMOS LSI used in the remote control system.

**Features**

- Low power, high noise immunity
- Low standby current: 1μA typical
- Wide operation voltage: 2.4 - 12V
- LED data transmission indicator
- Built in oscillator, use 5% resistor
- Two time receive check
- VT goes high after valid transmission

www.DataSheet4U.com

**Operation**

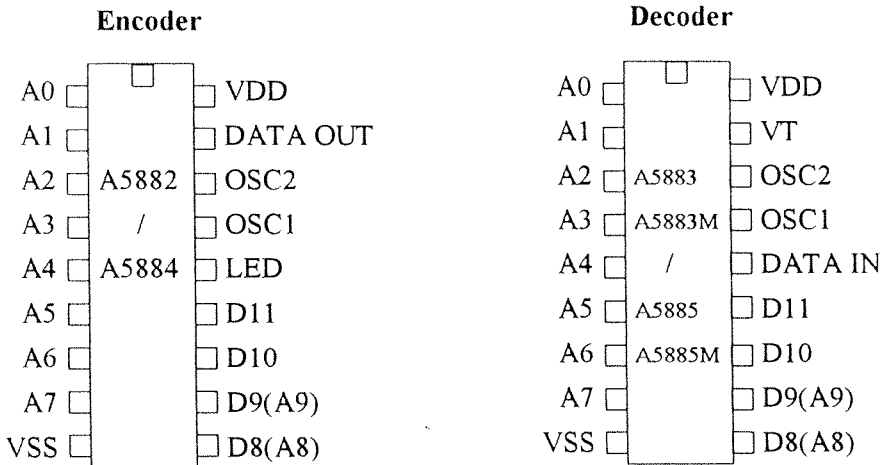
A. Encoder A5882, A5884

A5882 has 8 address bits and 4 data bits while A5884 has 10 address bits and 2 data bits. The encoder encodes 12 bits of trinary information and serially transmits this information upon receipt of a “low” input signal on one of the data pins. A LED will on while data transmission.

B. Decoder A5883, A5885

The decoder receives the 12 bit word and interprets them as corresponding address and data bit. When the decoder receives data with matching address, the VT pin goes high and data are latched to the data output pins. A5883M and A5885M are momentary data output version, its outputs go high after VT becomes low. (Normal high output)

**Pin Assignment**

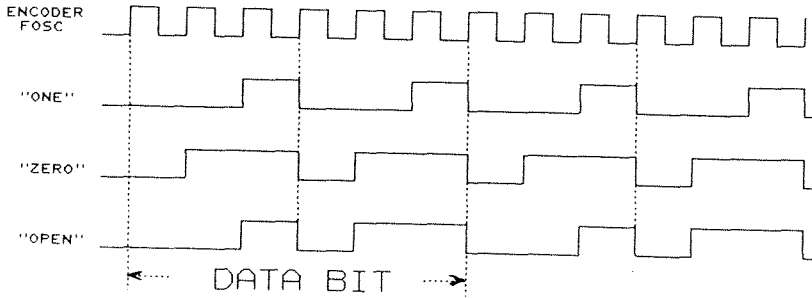


Remark : Description in brackets are for A5884/5.

**Recommended Oscillator Parameter**

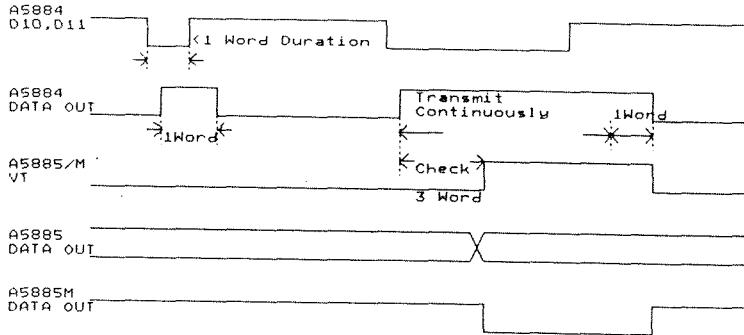
A5882/4 :	Res = 1M	Fosc = 3KHz
A5883/5 :	Res = 100K	Fosc = 100KHz

## Data Waveform



## Timing Diagram

www.DataSheet4U.com



## Application Circuit (A5884/ A5885)

