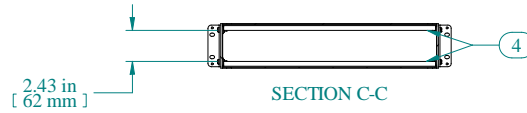
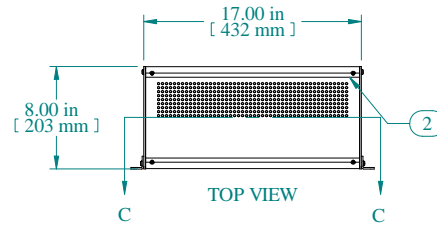


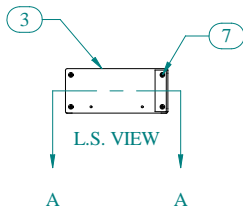
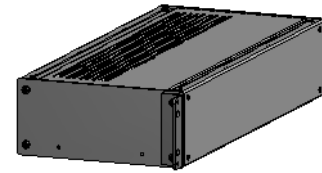
SECTION A-A



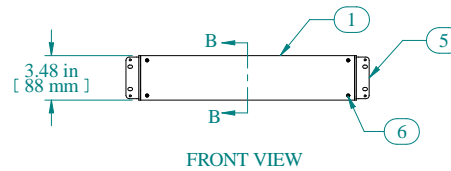
SECTION C-C



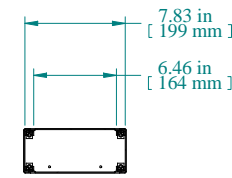
TOP VIEW



L.S. VIEW



FRONT VIEW



SECTION B-B

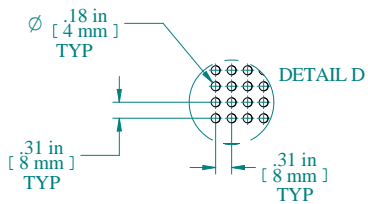
| Item Number | Title | Quantity |
|-------------|------------------------|----------|
| 1 | RMC - FRONT/REAR PANEL | 2 |
| 2 | RMC - VENTED TOP PANEL | 2 |
| 3 | RMC - SIDE PANEL | 2 |
| 4 | RMC - INTERNAL BRACKET | 4 |
| 5 | RMC - BRACKET | 2 |
| 6 | SCREW 6-32 X 3/8" | 16 |
| 7 | SCREW 10-32 X 5/8" | 8 |

PART NUMBERS

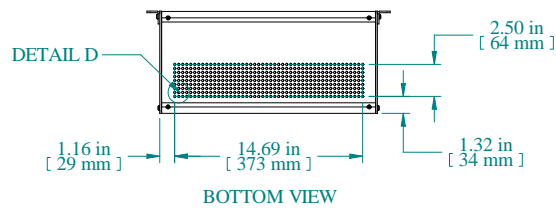
RMCV19038BK1 | PAINTED BLACK TEXTURED

NOTES

Shipped knockdown for handling ease & protection.



DETAIL D



BOTTOM VIEW

Data subject to change without notice. Isometric drawing not to scale.



**HAMMOND
MANUFACTURING™**

www.hammondmfg.com

PART NO. RMCV19038