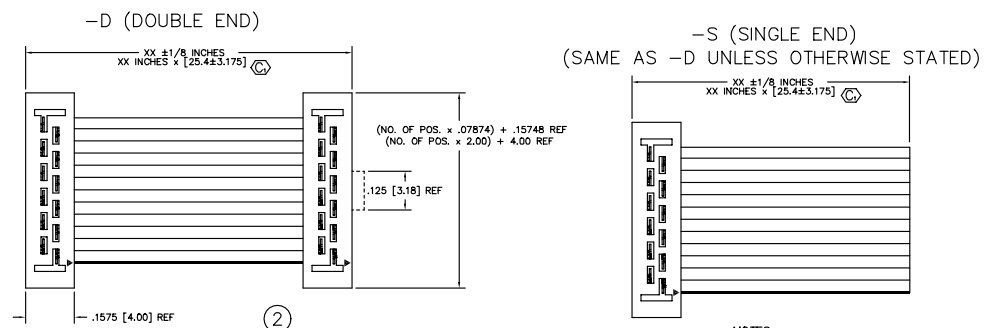
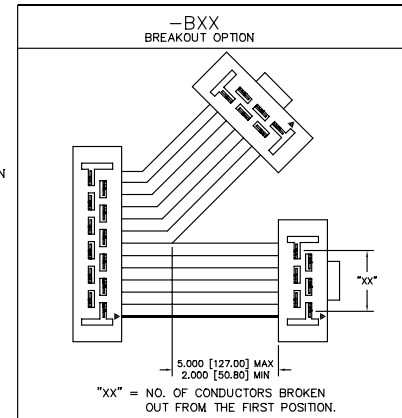


REVISION X
DO NOT SCALE FROM THIS PRINT

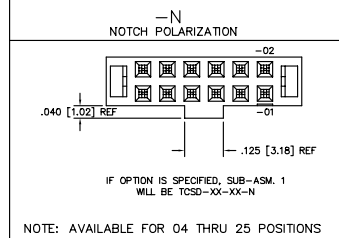


DIMENSIONS ARE IN INCHES UNLESS OTHERWISE NOTED TOLERANCES ARE: ONE PLACE DECIMALS: ± .1 THREE PLACE DECIMALS: ± .005 TWO PLACE DECIMALS: ± .01 FOUR PLACE DECIMALS: ± .0020 ANGLES ± 1° TITLE: 2mm DOUBLE ROW FEMALE IDC ASSEMBLY DWG NO: TCSD-XX-X-XX-01-XXX-XXX SHEET 1 OF 1

TCSD-XX-X-XX-01-XXX-XXX
NO. OF POSITIONS: 03, 04, 05, 07, 08, 10, 12, 13, 15, 17, 20, 22, 25
END ASSEMBLY: -S: SINGLE END, -D: DOUBLE END
ASSEMBLED LENGTH: (2 INCH MINIMUM)
LEAD STYLE
OPTION #2: SEE OPTIONS BELOW
OPTIONS #1: SEE OPTIONS BELOW



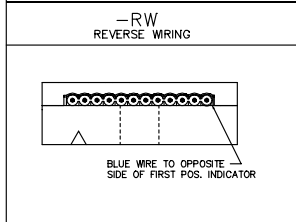
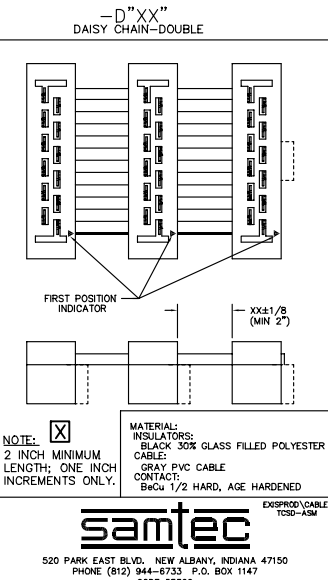
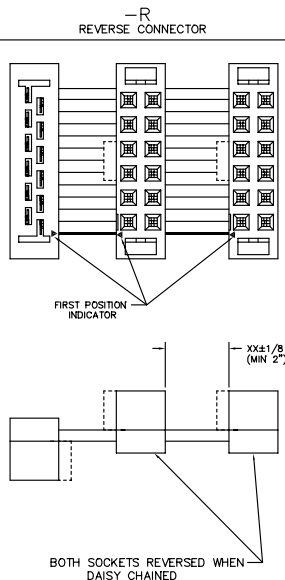
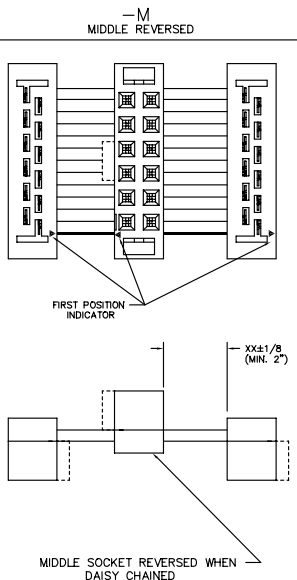
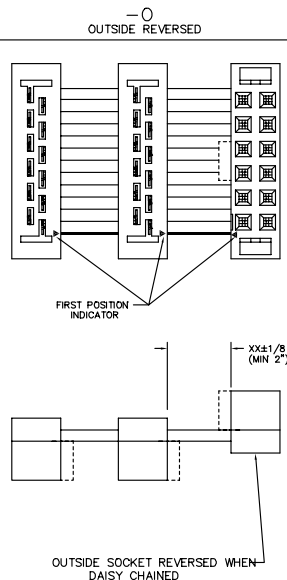
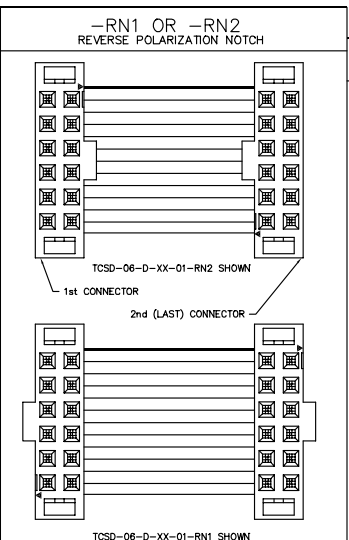
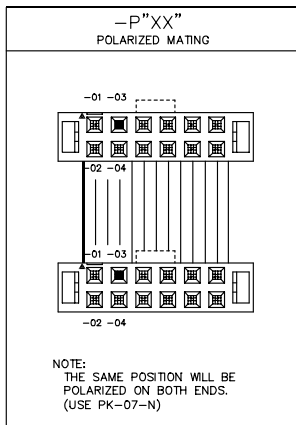
PLATING
-L: .000015 GOLD ON CONTACT AREA, TIN ON REMAINDER
-F: .000003 GOLD ON CONTACT AREA, TIN ON REMAINDER
(STANDARD PLATING IS .000030 GOLD ON CONTACT AREA, TIN ON REMAINDER)



- NOTES:
1. HIDDEN LINES ARE USED TO SHOW POLARIZATION WHEN USING -N OPTION.
2. Ⓞ REPRESENTS CRITICAL DIMS.
3. AS OF REV 'C' ON TCB-50 CABLE, ASSEMBLIES WILL BE LEAD FREE.
4. ALL ASSEMBLIES TO BE 100% ELECTRICALLY TESTED FOR SHORTS AND OPENS.
5. ALL ASSEMBLIES TO BE 100% HI-POT TESTED AT 800V.

TABLE 1	
1	2
TCSD-XX-XX-X	TCB-50

SPECIFY NO. OF POS. IN PART CALL OUT -XX



NOTE:
-RN1 = REVERSE NOTCH ON 1st CONNECTOR ONLY. (NOT AVAILABLE WITH -R OPTION)
-RN2 = REVERSE NOTCH ON 2nd CONNECTOR ONLY. (NOT AVAILABLE WITH -R OPTION)
(REVERSE NOTCH NOT AVAILABLE ON ANY DAISY CHAIN OPTIONS)

PROPRIETARY NOTE
THIS DOCUMENT CONTAINS INFORMATION OF A PROPRIETARY NATURE AND IS NOT TO BE REPRODUCED OR TRANSMITTED IN ANY FORM OR BY ANY MEANS, ELECTRONIC OR MECHANICAL, INCLUDING PHOTOCOPYING, RECORDING, OR BY ANY INFORMATION STORAGE AND RETRIEVAL SYSTEM, WITHOUT THE WRITTEN CONSENT OF SAMTEC INC.

NOTE: MATERIAL: INSULATORS: BLACK 30% GLASS FILLED POLYESTER; CABLE: GRAY PVC CABLE; CONTACT: BeCu 1/2 HARD, AGE HARDENED
samtec
520 PARK EAST BLVD., NEW ALBANY, INDIANA 47150
PHONE (812) 944-8733 F.O. BOX 1147
CODE 55322
MADE BY: KOLB 4-29-92 CHECKED BY: MCCARTIN
DESIGN APPROVAL: DEM
TCSD-XX-X-XX-01-XXX-XXX SHEET 1 OF 1