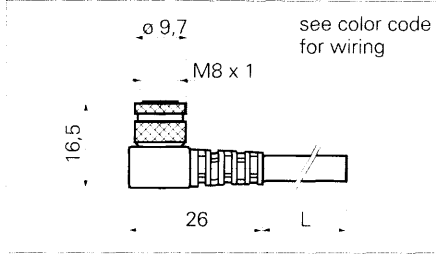


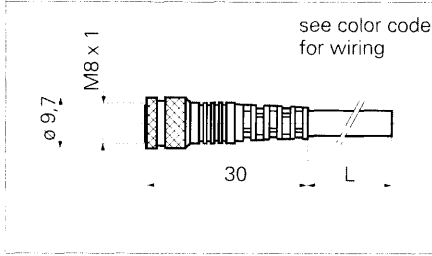
Connector ES 31

Part number	Cable length
ES 31.2P 3-pin	2 m PUR
ES 31.5P 3-pin	5 m PUR



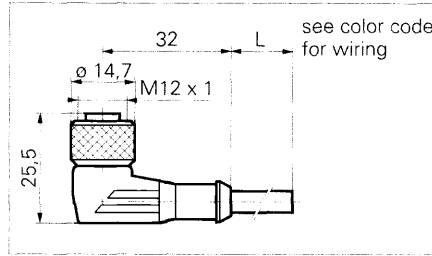
Connector ES 32

Part number	Cable length
ES 32.2P 3-pin	2 m PUR
ES 32.5P 3-pin	5 m PUR



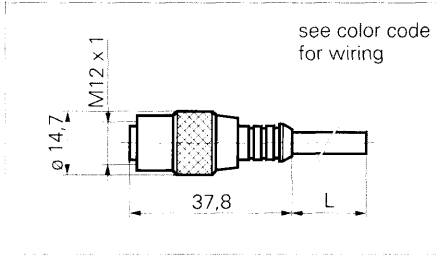
Connector ES 33

Part number	Cable length
ES 33.2P 3-pin	2 m PUR
ES 33.5P 3-pin	5 m PUR



Connector ES 34

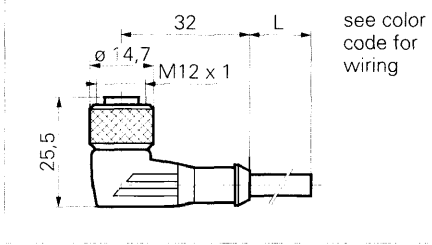
Part number	Cable length
ES 34.2P 3-pin	2 m PUR
ES 34.5P 3-pin	5 m PUR



Connector ES 29

Part number	Cable length
ES 29.2 3-pin	2 m PVC
ES 29.5 3-pin	5 m PVC

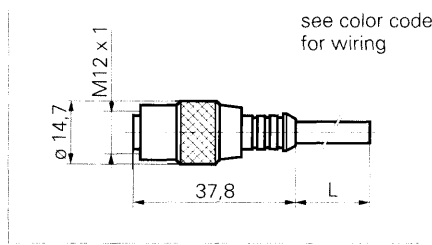
for AC use only



Connector ES 39

Part number	Cable length
ES 39.2 3-pin	2 m PVC
ES 39.5 3-pin	5 m PVC

for AC use only



Color code DC

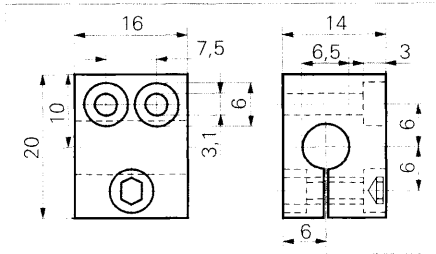
wire color	short name	signal
blue	BU	0 V
black	BK	output
brown	BN	+Vs

Color code AC

wire color	short name	signal
blue	BU	~
brown	BN	~
yellow/green	YE/GN	GND

Support bracket 109474

for 6,5 mm diameter proximity switches
material plastic (PA 6.6. black)
for mounting use M3 (3 mm \varnothing) screws



Support bracket 109475

for 8 mm diameter proximity switches
material plastic (PA 6.6. black)
for mounting use M3 (3 mm \varnothing) screws

