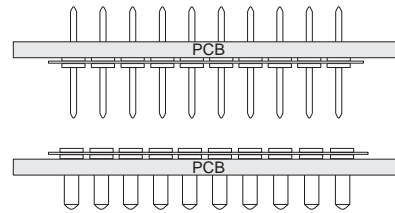
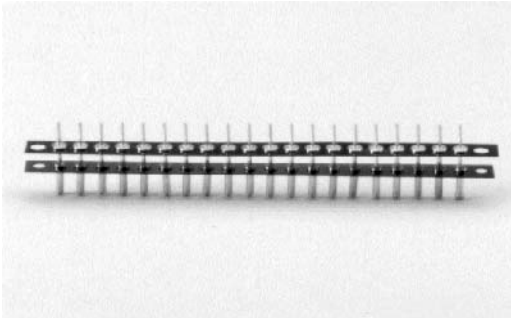


2mm (.079") Pitch Board to Board Interconnections



Features:

- Supplied in high temperature Peel-A-Way® removable terminal carrier.
- Sockets and adapters are designed in mating pairs.
- 2 mm (.079") centers pin to pin.
- High reliability screw machine terminals with closed end construction for 100% anti-wicking of solder.
- For surface mount board to board options consult factory.

Terminals and Contacts:

Terminal: Brass - Copper Alloy (C36000), ASTM-B-16
 Contact: Beryllium Copper - Copper Alloy (C17200), ASTM-B-194

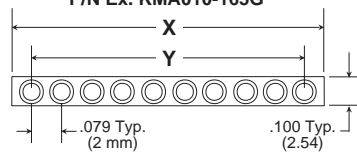
Plating:

Terminal: Gold over Nickel or Tin-Lead over Nickel
 Contact: Gold over Nickel or Tin-Lead over Nickel

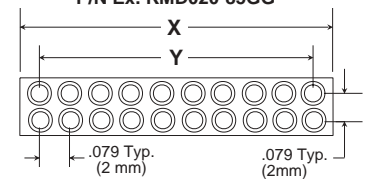
Body Material:

Polyimide Film, Temp. range -269°C to 400°C (-452°F to 752°F)

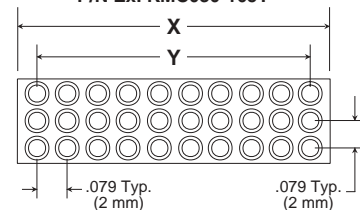
**Single Row
KMA - Male / KMS - Female**
P/N Ex. KMA010-165G



**Dual Row
KMB - Male / KMD - Female**
P/N Ex. KMD020-85GG

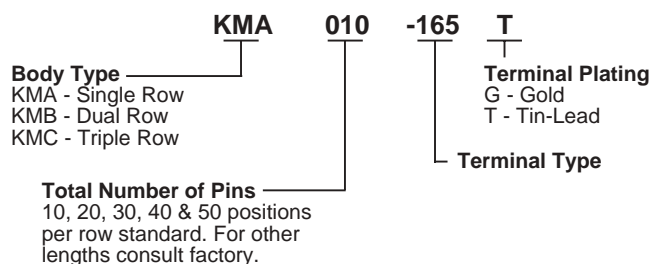


**Triple Row
KMC - Male / KMT - Female**
P/N Ex. KMC030-165T

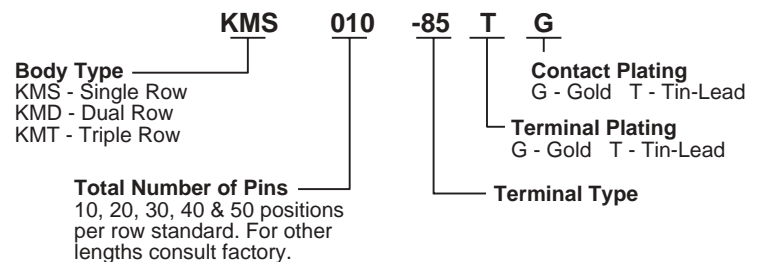


# of Pins Per Row	Total # of Pins			X in. (mm)	Y in. (mm)
	Single	Dual	Triple		
10	10	20	30	.866 (22.00)	.709 (18.00)
20	20	40	60	1.654 (42.00)	1.496 (38.00)
30	30	60	90	2.441 (62.00)	2.283 (58.00)
40	40	80	120	3.228 (82.00)	3.071 (78.00)
50	50	100	150	4.016 (102.00)	3.858 (98.00)

How To Order - Male

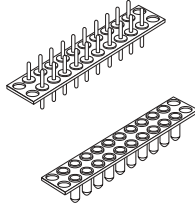


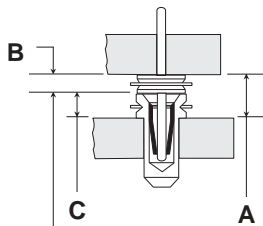
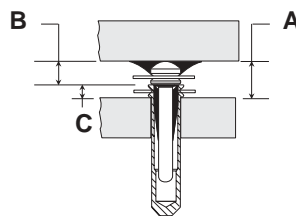
How To Order - Female



Peel-A-Way® covered by patent rights issued and/or pending.

2mm (.079") Pitch Board to Board Interconnections

 Peel-A-Way® Male
KMB020-165G

 Peel-A-Way® Female
KMD020-85TG

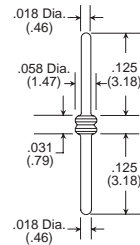
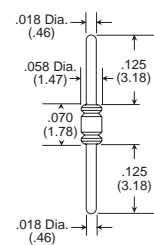
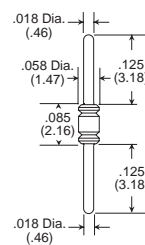
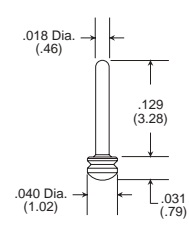
**Figure 1
Thru Hole**

**Figure 2
Surface Mount**

 Order One Each Male & Female
To Get the Required "A" Dim.

B	C	A	Male Part #	Female Part #	Fig. #
.031 (.79)	.015 (.38)	.046 (1.17)	KMB020-165G	KMD020-210TG	1
.031 (.79)	.015 (.38)	.046 (1.17)	KMB020-525G	KMD020-210TG	2
.031 (.79)	.031 (.79)	.062 (1.57)	KMB020-165G	KMD020-85TG	1
.031 (.79)	.031 (.79)	.062 (1.57)	KMB020-525G	KMD020-85TG	2
.031 (.79)	.031 (.79)	.062 (1.57)	KMB020-165G	KMD020-176TG	1
.031 (.79)	.031 (.79)	.062 (1.57)	KMB020-525G	KMD020-176TG	2
.070 (1.78)	.015 (.38)	.085 (2.16)	KMB020-321G	KMD020-210TG	1
.085 (2.16)	.015 (.38)	.100 (2.54)	KMB020-322G	KMD020-210TG	1
.070 (1.78)	.031 (.79)	.101 (2.57)	KMB020-321G	KMD020-85TG	1
.070 (1.78)	.031 (.79)	.101 (2.57)	KMB020-321G	KMD020-176TG	1
.085 (2.16)	.031 (.79)	.116 (2.95)	KMB020-322G	KMD020-85TG	1
.085 (2.16)	.031 (.79)	.116 (2.95)	KMB020-322G	KMD020-176TG	1
.031 (.79)	.155 (3.94)	.186 (4.72)	KMB020-165TG	KMD020-95TG	1
.031 (.79)	.155 (3.94)	.186 (4.72)	KMB020-525TG	KMD020-95TG	2
.070 (1.78)	.155 (3.94)	.225 (5.72)	KMB020-321G	KMD020-95TG	1
.085 (2.16)	.155 (3.94)	.240 (6.10)	KMB020-322G	KMD020-95TG	1

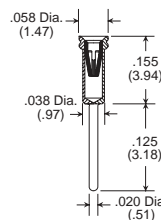
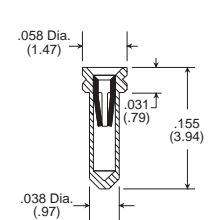
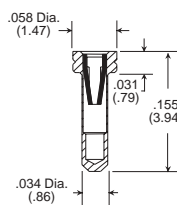
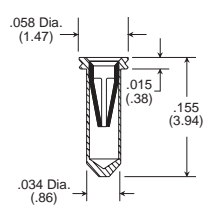
 20 Position Dual Row Part Numbers Shown
For Additional Ordering Information See Page 112

If required "A" dimension is not shown, consult factory.

Male Terminal Information

Type -165

Type -339

Type -340

Type -525


Female Terminal Information

Type -95

 **Type -85**

 **Type -176**

 **Type -210**

 Quick turn delivery available on standard terminal types.

 Additional terminal types available.
See terminal section for detailed terminal information.

Peel-A-Way® covered by patent rights issued and/or pending.