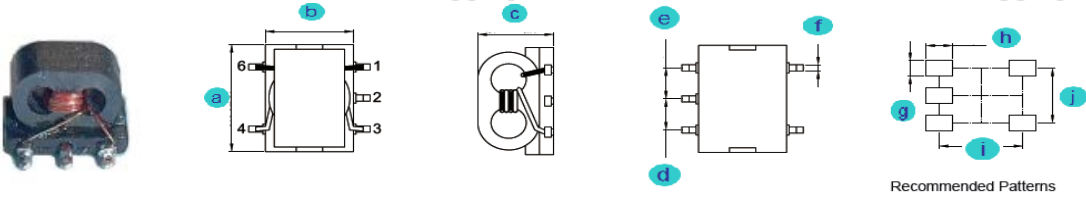


## A. Electrical Specifications:

P/N	Winding Turns	Insertion Loss 1dB Max.
SBT151-04	4.5 Ts	@ 500~1800 MHz

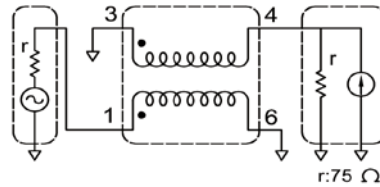
## B. Dimensions: mm (Inch)

Series	a	b	c	d	e	f	g	h	i	j
SBT151	3.80 (0.150)	4.10 (0.161)	3.60 (0.142)	1.27 (0.05)	1.27 (0.05)	0.5 (0.020)	0.75 (0.030)	1.65 (0.065)	4.82 (0.190)	3.3 (0.130)
Tol.	±0.38 (0.015)	±0.38 (0.015)	Max.	±0.38 (0.015)	±0.38 (0.015)	±0.15 (0.006)	Typ.	Typ.	Typ.	Typ.



Recommended Patterns

## C. Test Circuit:



Test Equipment : WILTRON 5411A

## D. Features:

- a. Base pin terminal treated, allowing mounting 'as is' on a PCB.
- b. Custom specifications available.
- c. MSL: Level 1.

## E. Applications:

Double balance mixers, broad-band transformers, impedance transformers, etc.

## F. Characteristic Curve:

