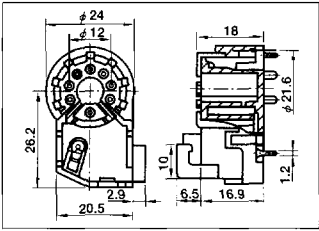


SMK CRT SOCKET IC/LSI SOCKET · PC CARD CONNECTOR

VMF Series



CVT 332□-□□□□



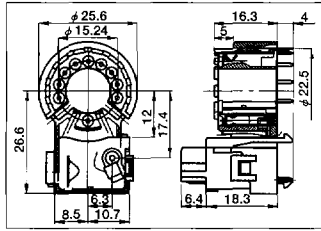
CRT SOCKET (With F·SG)
CRTソケット

- Neck Dia: $\phi 22.5$ mm
- CRT Pin Circle Dia: $\phi 12$ mm
- CRT Base: JEDEC No. B8-288
- Lead Wiring: Solder Type, Snap-in Type

VST Series



CVT 3275-□□□□



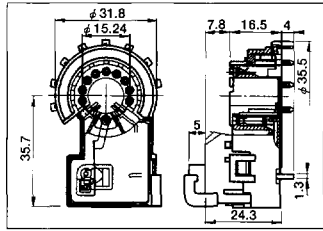
CRT SOCKET (With F·SG)
CRTソケット

- Neck Dia: $\phi 29.1$ mm
- CRT Pin Circle Dia: $\phi 15.24$ mm
- CRT Base: JEDEC No. B10-277
- Lead Wiring: Snap-in Type

VSH Series



CVT 326□-□□□□



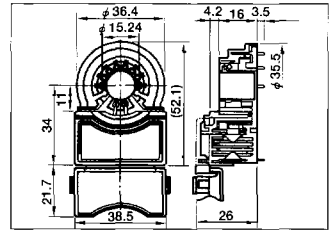
CRT SOCKET (With F·SG)
CRTソケット

- Neck Dia: $\phi 29.1$ mm
- CRT Pin Circle Dia: $\phi 15.24$ mm
- CRT Base: JEDEC No. B10-277
- Lead Wiring: Solder Type, Snap-in Type

VSW Series (Duble Focus)



CVT325□-□□□□



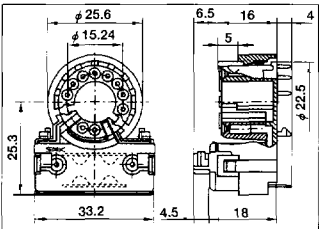
CRT SOCKET (With F·SG)
CRTソケット

- Neck Dia: $\phi 32.5 \sim \phi 29.1$ mm
- CRT Pin Circle Dia: $\phi 15.24$ mm
- CRT Base: JEDEC No. B10-301
- Lead Wiring: Solder Type, Snap-in Type

VSW-2 Series



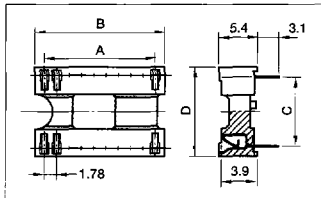
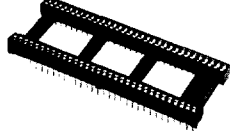
CVT 3280-□□□□



CRT SOCKET (With F·SG)
CRTソケット

- Neck Dia: $\phi 32.5 \sim \phi 29.1$ mm
- CRT Pin Circle Dia: $\phi 15.24$ mm
- CRT Base: JEDEC No. B10-301
- Lead Wiring: Snap-in Type

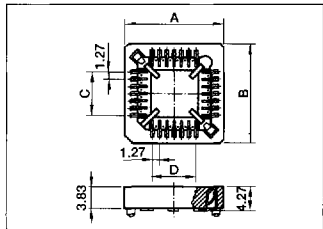
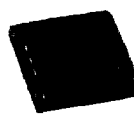
SK Series (Pitch 1.78mm)



IC SOCKET Terminal pitch: 1.78mm
ICソケット

No. Posi	Part No.	Dimensions (mm)			
		A	B	C	D
28	CLC3028	23.14	26.14		
30	CLC3030	24.92	27.92	10.16	12.92
40	CLC3040	33.82	36.82		
42	CLC3042	35.60	38.60	15.24	18.00
48	CLC3048	40.94	43.94		
64	CLC3064	55.18	58.18	19.05	21.81

PLCC SOCKET (Pitch 1.27mm)



PLCC SOCKET (SMT TYPE)
PLCCソケット (SMT対応)

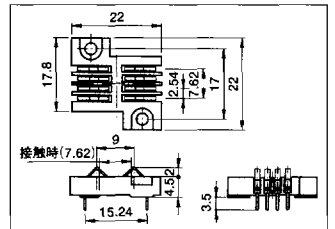
No. Posi	Part No.	A	B	C	D
20	PLCC-L-20P	14.86	14.86	5.08	5.08
28	PLCC-L-28P	17.40	17.40	7.62	7.62
32	PLCC-L-32P	19.45	16.90	7.62	7.62
44	PLCC-L-44P	22.48	22.48	12.70	12.70
52	PLCC-L-52P	25.40	25.40	15.24	15.24
68	PLCC-L-68P	30.54	30.54	20.32	20.32
84	PLCC-L-84P	35.56	35.56	25.40	25.40

- With Boss: PLCC-L□□P-1
- DIP Type: PLCC-□□

IC CARD CONNECTOR (Pitch 2.54mm)



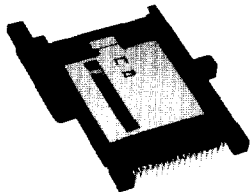
CLE 1008-0251



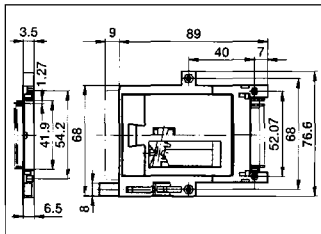
IC CARD CONNECTOR
ICカード用コネクタ

- Rating: 0.5A
- Contact Resistance: 30m Ω max.
- Insulation Resistance: 1000M Ω min. at 500V DC
- Withstanding Voltage: 500Vrms AC for one minute
- Insertion/Extraction Life: 100,000cycles
- SMT Type: CLE1008-0151

PC CARD CONNECTOR (Pitch 1.27mm)



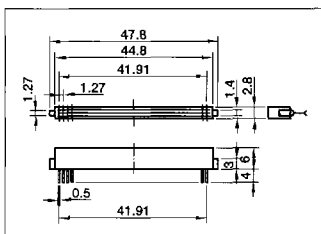
68P PLUG CLE 9068-0151



PC CARD CONNECTOR
PCカードコネクタ

- Rating: 0.5A 5V DC
- Contact Resistance: 40m Ω max.
- Insulation Resistance: 1000M Ω min. at 500V DC
- Withstanding Voltage: 500Vrms AC for one minute
- Variety: 68P PLUG CLE 9068-0□□01
DIP Type CLE 9068-0201 etc.
SMT Type CLE 9068-2401 etc.

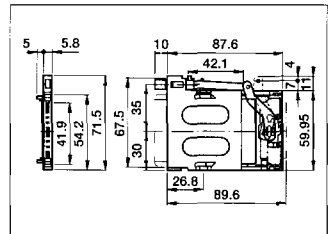
68P SOCKET CLE 9568-0251



<レバトリ>

- スライド式イジェクター付タイプ
- プッシュ式イジェクター付タイプ
- スタンドオフ付タイプ
- ストレートタイプ
- ライトアングルタイプ
- 2段タイプ
- リバース挿入タイプ
- 1.8インチHDD対応(タイプⅢ)
- DRAMカード用(88P)

CLE 9068-0801 (SMT TYPE)



CLE 9068-2201 (TYPE Ⅲ)

