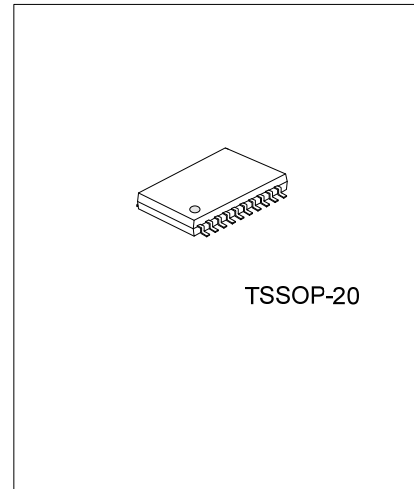




# U74HC563

CMOS IC

## OCTAL TRANSPARENT D-TYPE LATCHES WITH 3-STATE OUTPUTS



### DESCRIPTION

The UTC **74HC563** are octal D-type transparent latches featuring separated D-type inputs for each latch and inverting 3-state outputs for bus-oriented applications.

### FEATURES

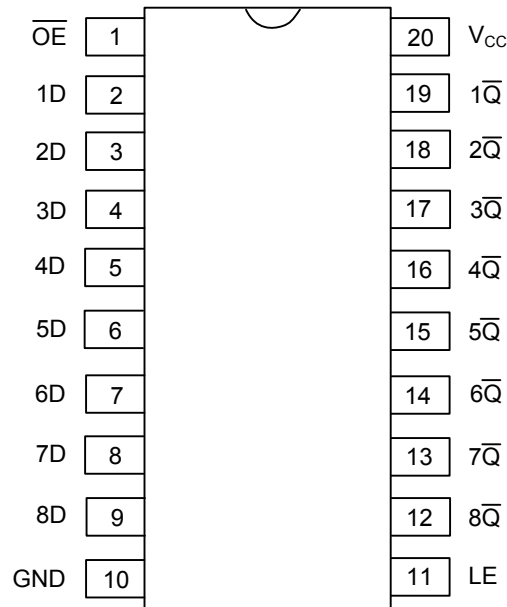
- \* Operation Voltage Range:2~6V
- \* 3-state Inverting Outputs for Bus-oriented Applications
- \* Common 3-state Output Enable Input

### ORDERING INFORMATION

Ordering Number		Package	Packing
Lead Free	Halogen Free		
U74HC563L-P20-R	U74HC563G-P20-R	TSSOP-20	Tape Reel
U74HC563L-P20-T	U74HC563G-P20-T	TSSOP-20	Tube

<p>U74HC563L-P20-T</p> <p>(1)Packing Type (2)Package Type (3)Lead Free</p>	<p>(1) R: Tape Reel, T: Tube (2) P20: TSSOP-20 (3) G: Halogen Free, L: Lead Free</p>
--	--

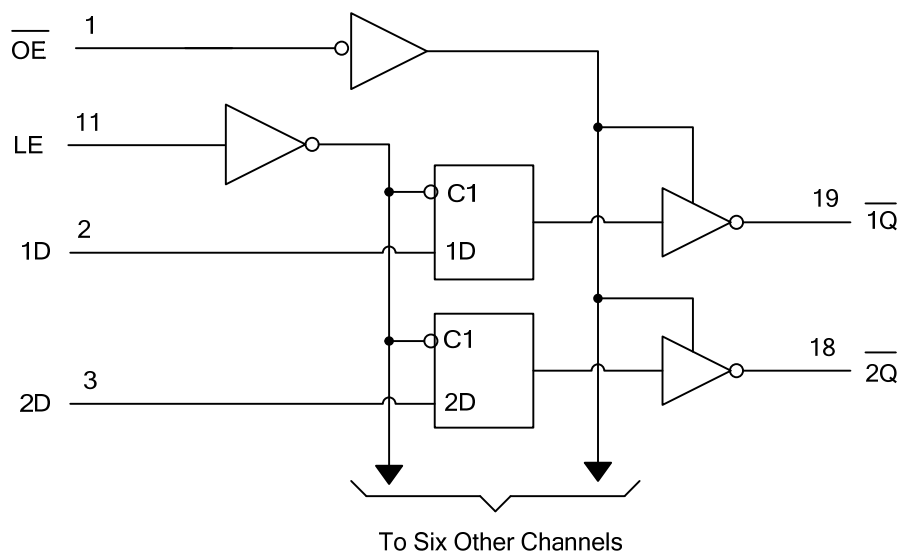
■ PIN CONFIGURATION



■ FUNCTION TABLE

INPUTS( $\overline{OE}$ )	INPUTS(LE)	INPUTS(D)	OUTPUT( $\overline{Q}$ )
L	H	H	L
L	H	L	H
L	L	X	$\overline{Q}_0$
H	X	X	Z

■ LOGIC DIAGRAM



■ ABSOLUTE MAXIMUM RATING(unless otherwise specified)

PARAMETER	SYMBOL	RATINGS	UNIT
Supply Voltage	$V_{CC}$	-0.5~7.0	V
Input Voltage	$V_{IN}$	-0.5~ $V_{CC}+0.5$	V
Output Voltage(active mode)	$V_{OUT}$	-0.5~ $V_{CC}+0.5$	V
Input Clamp Current ( $V_{IN}<0$ )	$I_{IK}$	$\pm 20$	mA
Output Clamp Current ( $V_{OUT}<0$ )	$I_{OK}$	$\pm 20$	mA
Output Current	$I_{OUT}$	$\pm 35$	mA
$V_{CC}$ or GND Current	$I_{CC}$	$\pm 70$	mA
Storage Temperature	$T_{STG}$	-65 ~ +150	°C

Notes: 1. Absolute maximum ratings are those values beyond which the device could be permanently damaged.

Absolute maximum ratings are stress ratings only and functional device operation is not implied.

■ RECOMMENDED OPERATING COMDITIONS

PARAMETER	SYMBOL	TEST CONDITIONS	MIN	TYP	MAX	UNIT
Supply Voltage	$V_{CC}$		2	5	6	V
Input Voltage	$V_{IN}$		0		$V_{CC}$	V
Output Voltage	$V_{OUT}$		0		$V_{CC}$	V
Operating Temperature	$T_{OPR}$		-40		85	°C
Input Transition Rise or Fall Rate	$t_r$	$V_{CC}=2V$			1000	ns
		$V_{CC}=4.5V$			500	ns
		$V_{CC}=6V$			400	ns

■ ELECTRICAL CHARACTERISTICS( $T_A=25^\circ C$ , unless otherwise specified)

PARAMETER	SYMBOL	TEST CONDITIONS	MIN	TYP	MAX	UNIT
High-level input voltage	$V_{IH}$	$V_{CC}=2V$	1.5			V
		$V_{CC}=4.5V$	3.15			V
		$V_{CC}=6V$	4.2			V
Low-lever output voltage	$V_{IL}$	$V_{CC}=2V$			0.5	V
		$V_{CC}=4.5V$			1.35	V
		$V_{CC}=6V$			1.8	V
High-Level Output Voltage	$V_{OH}$	$V_{CC}=2V, I_{OH}=-20\mu A$	1.9	1.998		V
		$V_{CC}=4.5V, I_{OH}=-20\mu A$	4.4	4.499		V
		$V_{CC}=6V, I_{OH}=-20\mu A$	5.9	5.999		V
		$V_{CC}=4.5V, I_{OH}=-6mA$	3.98	4.3		V
		$V_{CC}=6V, I_{OH}=-7.8mA$	5.48	5.8		V
Low-Level Output Voltage	$V_{OL}$	$V_{CC}=2V, I_{OL}=20\mu A$		0.002	0.1	V
		$V_{CC}=4.5V, I_{OL}=20\mu A$		0.001	0.1	V
		$V_{CC}=6V, I_{OL}=20\mu A$		0.001	0.1	V
		$V_{CC}=4.5V, I_{OH}=6mA$		0.17	0.26	V
		$V_{CC}=6V, I_{OL}=7.8mA$		0.15	0.26	V
Input Leakage Current	$I_{I(LEAK)}$	$V_{CC}=6V, V_{IN}=V_{CC}$ or GND		$\pm 0.1$	$\pm 100$	nA
Output OFF -state current	$I_{OZ}$	$V_{CC}=6V, V_{OUT}=V_{CC}$ or GND		$\pm 0.01$	$\pm 0.5$	$\mu A$
Quiescent Supply Current	$I_Q$	$V_{CC}=6V, V_{IN}=V_{CC}$ or GND, $I_{OUT}=0$			8	$\mu A$
Input Capacitance	$C_{IN}$	$V_{CC}=6V, V_{IN}=V_{CC}$ or GND		3	10	pF

■ TIMING REQUIREMENTS( $T_A=25^{\circ}\text{C}$ , unless otherwise specified)

PARAMETER	SYMBOL	TEST CONDITIONS	MIN	TYP	MAX	UNIT
Pulse Duration, LE High	$t_w$	$V_{CC}=2V$	80			ns
		$V_{CC}=4.5V$	16			
		$V_{CC}=6V$	14			
Setup Time, Data Before LE $\downarrow$	$t_{su}$	$V_{CC}=2V$	50			ns
		$V_{CC}=4.5V$	10			
		$V_{CC}=6V$	9			
Hold Time, Data After LE $\downarrow$	$t_h$	$V_{CC}=2V$	5			ns
		$V_{CC}=4.5V$	5			
		$V_{CC}=6V$	5			

■ DYNAMIC CHARACTERISTICS( $T_A=25^{\circ}\text{C}$ ,  $R_L=1k\Omega$ , unless otherwise specified)

$C_L=50pF$

PARAMETER	SYMBOL	TEST CONDITIONS	MIN	TYP	MAX	UNIT
Propagation delay from input (D) to output ( $\bar{Q}$ )	$t_{PD}$ ( $t_{PLH}/t_{PHL}$ )	$V_{CC}=2V$		77	175	ns
		$V_{CC}=4.5V$		26	35	ns
		$V_{CC}=6V$		23	30	ns
Propagation delay from input (LE) to output ( $\bar{Q}$ )	$t_{PD}$ ( $t_{PLH}/t_{PHL}$ )	$V_{CC}=2V$		90	175	ns
		$V_{CC}=4.5V$		27	35	ns
		$V_{CC}=6V$		23	30	ns
3-state output enable time from input ( $\bar{OE}$ ) to output ( $\bar{Q}$ )	$t_{EN}$ ( $t_{PZL}/t_{PZH}$ )	$V_{CC}=2V$		70	150	ns
		$V_{CC}=4.5V$		24	30	ns
		$V_{CC}=6V$		21	26	ns
3-state output disable time from input ( $\bar{OE}$ ) to output ( $\bar{Q}$ )	$t_{DIS}$ ( $t_{PLZ}/t_{PHZ}$ )	$V_{CC}=2V$		47	150	ns
		$V_{CC}=4.5V$		23	30	ns
		$V_{CC}=6V$		21	26	ns
Output transition time, ( $\bar{Q}$ )	$t_T$ ( $t_R/t_F$ )	$V_{CC}=2V$		28	60	ns
		$V_{CC}=4.5V$		8	12	ns
		$V_{CC}=6V$		6	10	ns

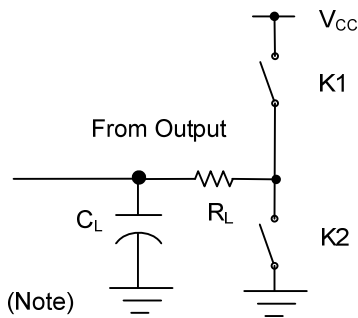
$C_L=150pF$

PARAMETER	SYMBOL	TEST CONDITIONS	MIN	TYP	MAX	UNIT
Propagation delay from input (D) to output ( $\bar{Q}$ )	$t_{PD}$ ( $t_{PLH}/t_{PHL}$ )	$V_{CC}=2V$		95	200	ns
		$V_{CC}=4.5V$		33	40	ns
		$V_{CC}=6V$		29	34	ns
Propagation delay from input (LE) to output ( $\bar{Q}$ )	$t_{PD}$ ( $t_{PLH}/t_{PHL}$ )	$V_{CC}=2V$		103	225	ns
		$V_{CC}=4.5V$		33	45	ns
		$V_{CC}=6V$		29	38	ns
3-state output enable time from input ( $\bar{OE}$ ) to output ( $\bar{Q}$ )	$t_{EN}$ ( $t_{PZL}/t_{PZH}$ )	$V_{CC}=2V$		85	200	ns
		$V_{CC}=4.5V$		29	40	ns
		$V_{CC}=6V$		26	34	ns
Output transition time, ( $\bar{Q}$ )	$t_T$ ( $t_R/t_F$ )	$V_{CC}=2V$		60	210	ns
		$V_{CC}=4.5V$		17	42	ns
		$V_{CC}=6V$		14	36	ns

■ OPERATING CHARACTERISTICS

PARAMETER	SYMBOL	TEST CONDITIONS	RATINGS	UNIT
Power Dissipation Capacitance	$C_{PD}$	No load	50	pF

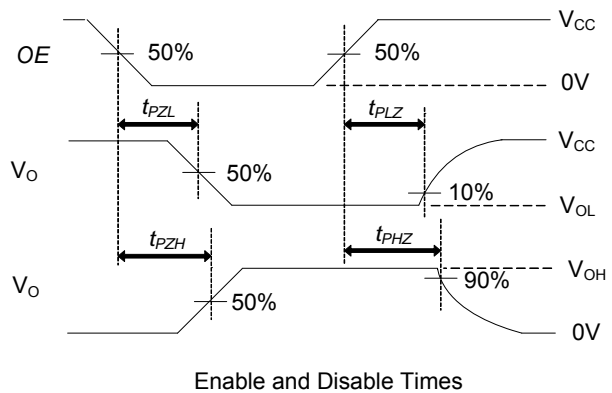
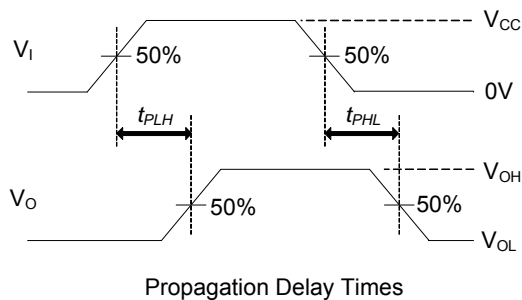
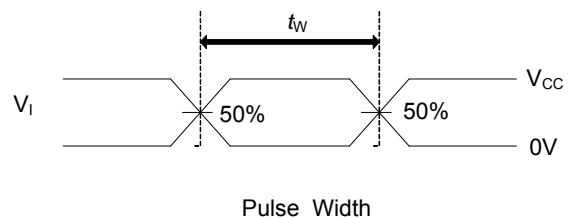
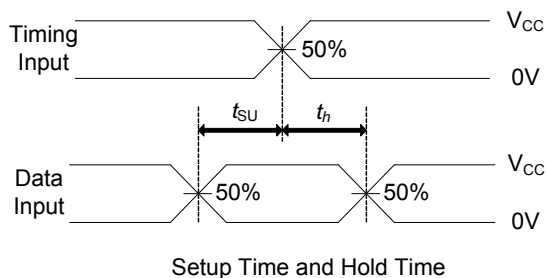
## TEST CIRCUIT AND WAVEFORMS



TEST	K1	K2
$t_{PLH}/t_{PHL}$	Open	Open
$t_{PHZ}/t_{PZH}$	Open	Close
$t_{PLZ}/t_{PZL}$	Close	Open

Note:  $C_L$  includes probe and jig capacitance.

$PRR \leq 1\text{MHz}$ ,  $Z_O = 50\Omega$ ,  $t_R \leq 6\text{ns}$ ,  $t_F \leq 6\text{ns}$



UTC assumes no responsibility for equipment failures that result from using products at values that exceed, even momentarily, rated values (such as maximum ratings, operating condition ranges, or other parameters) listed in products specifications of any and all UTC products described or contained herein. UTC products are not designed for use in life support appliances, devices or systems where malfunction of these products can be reasonably expected to result in personal injury. Reproduction in whole or in part is prohibited without the prior written consent of the copyright owner. The information presented in this document does not form part of any quotation or contract, is believed to be accurate and reliable and may be changed without notice.