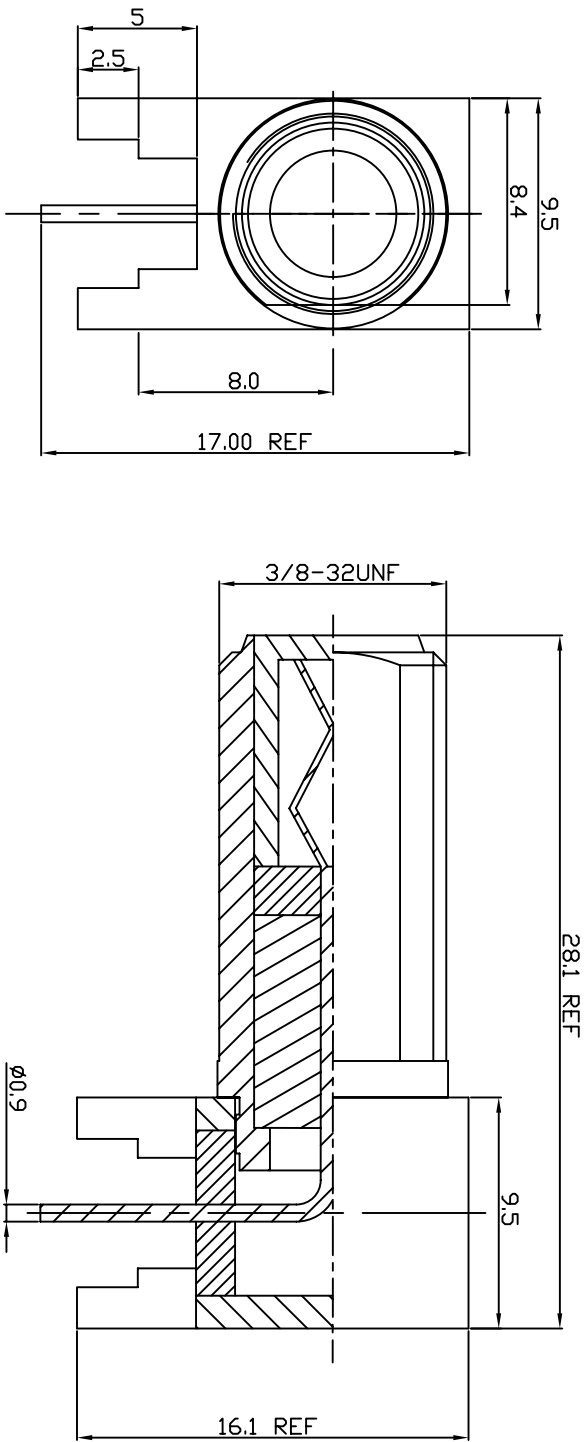
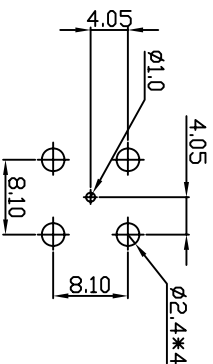


APPROVED: _____
 DATE: _____ TITLE: _____

Rev	AWO #	Description	Date	Appr
-		RELEASED	10/26/05	
A		ADDED HEIGHT OFF PCB	03/22/06	BAS



NO	DESCRIPTION	MATERIAL	FINISH	QTY
6	INSULATOR	TEFLON	NONE	1
5	INSULATOR	TEFLON	NONE	2
4	PIN	PHOSPHOR	TIN	1
3	INSULATOR	DEL RIN	NONE	1
2	BODY	BRASS	NICKEL	1
1	BODY	BRASS	NICKEL	1



RECOMMENDED PCB LAYOUT

SPECIFICATIONS:

Electrical:

Nominal Impedance: 75 ohms
 Frequency range: 0-4 GHz
 Maximum peak voltage: 500V
 Insulation resistance: 5000 Mohm min @ 500 VDC
 Dielectric withstanding voltage: 1500 VAC rms
Environmental:
 Lead free, RoHS compliant.



UNLESS OTHERWISE SPECIFIED
 ALL DIMENSIONS ARE INCHES [MM]
 TOLERANCES: EXCEPT AS NOTED

INCHES	HILES
.X ± .10	Ø.X ± .10
.XX ± .020	Ø.XX ± .015
.XXX ± .015	Ø.XXX ± .010

ADAM TECH
 909 Rahway Avenue, Union, NJ 07083
 Phone: 908-687-5000 Fax: 908-687-5710

TITLE: R/A, F TYPE FEMALE, PC MOUNT, 75 OHM
 TEFLON INSULATOR

APPROVALS	DATE	SIZE	PART NO.	SCALE	SHEET	REV.
DRAWN	SS		RF4-01-T-00-75	NTS	1 OF 1	A
CHECKED		X				
APPROVED	10/26/05					

6

5

4

3

2

1