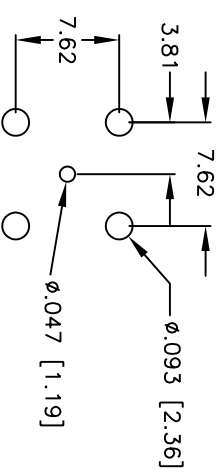
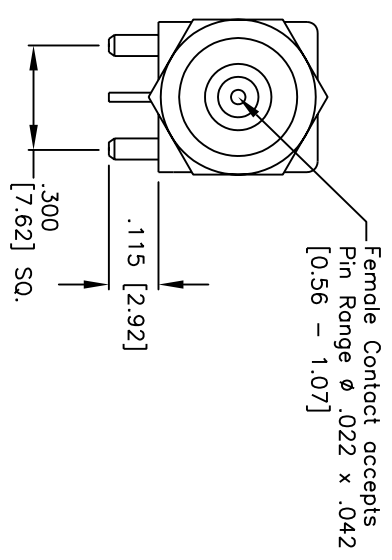
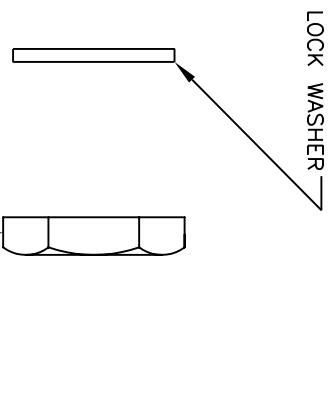
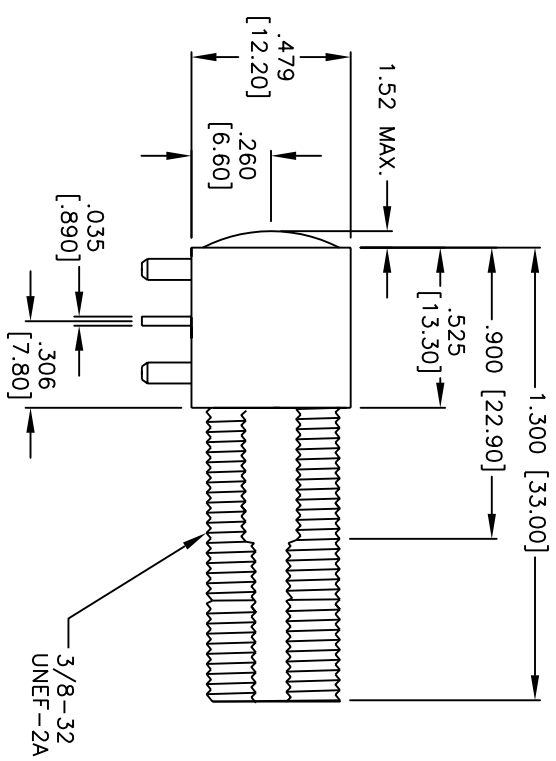


Rev	Description	Date	Appr
-	RELEASED	5/3/04	
A	ADDED RETURN LOSS & TEMP	05/26/04	BAS



RECOMMENDED PCB LAYOUT



SPECIFICATIONS:

- Material: Teflon.
- Insulator: Beryllium copper
- Contact: Brass, Nickel Plated
- Body: Brass.
- Hex Nut: Brass, Nickel Plated
- Lock Washer: Phosphor Bronze, Nickel Plated.
- Electrical:
 - Nominal Impedance: 75 ohms
 - Frequency range: 0-3 GHz
 - Maximum peak voltage: 500V
 - Insulation resistance: 5000 Mohm min @ 500 VDC
 - Dielectric withstanding voltage: 1500 VAC rms
 - Temp range: -40°C to +140°C
 - Return loss: 15db at 1GHz

ADAM TECH		PART NUMBER: RF4-08-T-00-75	
Dimension in IN [MM]		DESCRIPTION: RF CONNECTOR, TYPE F, RIGHT ANGLE	
Tolerance (Unless Otherwise Specified)	DRAWN : SS	SHEET 1 OF 1 SHEETS	
.XX ± .01 .XXX ± .005	APPR : -	LOG	REF.
Date: 5/3/04	SCALE : NTS		REV. -