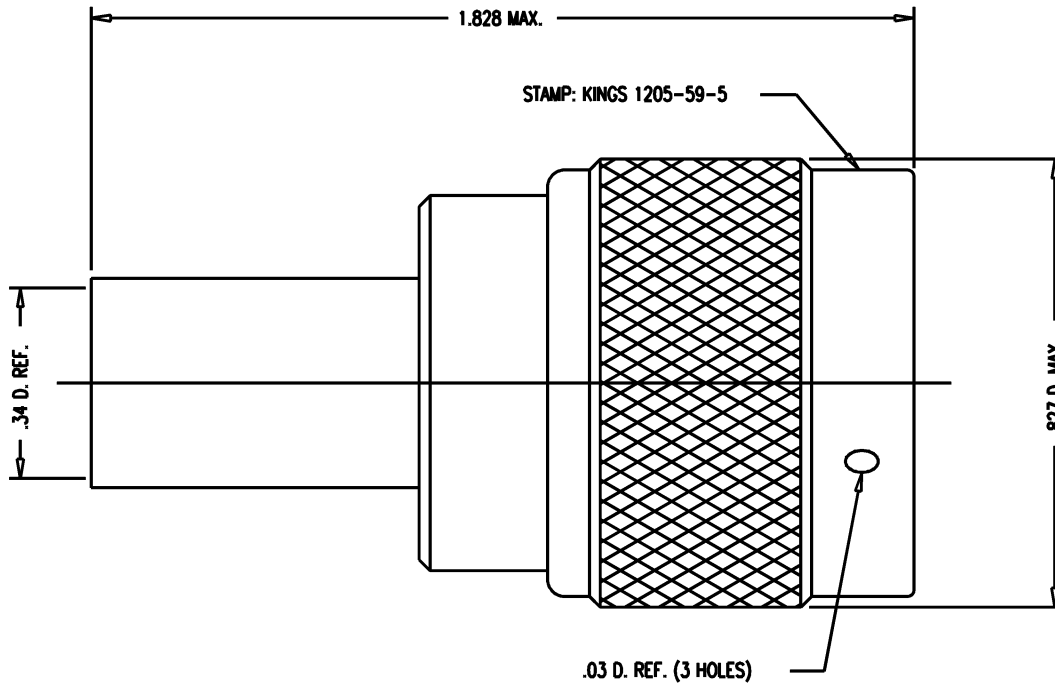


GSD

1205-59-5



NOTES:

1. FOR USE WITH DOUGLAS D2348-1 CABLE.
2. FOR CABLING INSTRUCTION SEE CP-5402.
3. FOR CABLE CRIMPING USE DIE KTH-2012.
4. INTERFACE PER MIL-STD-348 FIG. 304-1.
5. MARK PACKAGE: KINGS 1205-59-5 XX XX (DATE CODE)
DOUGLAS 500488-2
6. MATERIALS:
INSULATOR: TEFLON, ASTM-D-4894
GASKET: SIL. RUBBER, ZZ-R-765
OUTER CONTACT AND C-RING: PHOS. BRONZE, ASTM-B-103
ALL OTHER METAL PARTS: BRASS, ASTM-B16
7. FINISHES:
CENTER CONTACT: GOLD PLATE PER MIL-G-45204
ALL OTHER METAL PARTS: SILVER PLATE PER QQ-S-365
8. ELECTRICAL CHARACTERISTICS:
NOMINAL IMPEDANCE: 50 ~W
FREQUENCY RANGE: DC TO 11 GHz
VOLTAGE RATING: 1000 VOLTS RMS

REVISIONS

ISSUE	CHANGES
0	ER 36813 KH 02/08/95
1	CN 36850 A CCT 02/28/96
2	CN 36927 C MJB 04/15/96

KAM6373

SCALE	4:1
APPROX SURFACE AREA	
WAS:	E-19110
USED ON	
REF:	Mc D. D. AIRCRAFT / 500488-2 REV. -
PL, N	
DRAWN	KH 02/08/96
DESIGN	MJB 02/09/96
APPR.	DATE

KINGS
ELECTRONICS CO., INC.
TUCKAHOE, NEW YORK 10707

1205-59-5

GSD